

PROPOSAL FOR

COMPREHENSIVE ANALYSIS OF POLICE SERVICES

Culver City, CA



CPSM[®]

CENTER FOR PUBLIC SAFETY MANAGEMENT, LLC
475 K STREET NW STE 702 • WASHINGTON, DC 20001
WWW.CPSM.US • 800-998-3392

ICMA

Exclusive Provider of Public Safety Technical Services for
International City/County Management Association



Center for Public Safety Management, LLC

June 25, 2020

John Nachbar
City Manager
City of Culver City
9770 Culver Blvd.
Culver City, CA. 90232

Dear Mr. Nachbar:

The *Center for Public Safety Management, LLC, (CPSM)* as the exclusive provider of public safety technical assistance for the International City/County Management Association, is pleased to submit this proposal to the City of Culver City for an analysis of law enforcement services. The CPSM approach is unique and more comprehensive than ordinary accreditation or competitor studies.

In general, our analysis involves the following major outcomes:

- Conduct a data-driven forensic analysis to identify actual workload. This forms the basis for determining what is driving overtime; workloads; and service demands;
- Identify and recommend appropriate staffing and deployment levels for every discrete operational and support function in the department;
- Examine the department's organizational structure and culture;
- Perform gap analysis, comparing the "as is" state of the department to the industry's best practices;
- Recommend a management framework to ensure accountability, increased efficiency and improved performance;
- Determine staffing analysis using workload and performance for police departments.

This proposal is specifically designed to provide the local government with a thorough and unbiased analysis of emergency services in your community. We have developed a unique approach by combining the experience of dozens of emergency services subject matter experts. The team assigned to the project will have hundreds of years of practical experience managing emergency service agencies, a record of research, academic, teaching and training, and professional publications, and extensive consulting experience from hundreds of projects completed for municipalities nationwide. The team we assemble for you will be true "subject matter experts" with hands-on emergency services experience, not research assistants or interns.

ICMA has provided direct services to local governments worldwide for almost 100 years, which has helped to improve the quality of life for millions of residents in the United States and abroad. My colleagues at CPSM and I greatly appreciate this opportunity and would be pleased to address any comments you may have. I can be reached at 714-334-5831 or via email at jgomewhiteley@cpsm.us.

Sincerely,

A handwritten signature in blue ink that reads "Jackie Gomez-Whiteley". The signature is fluid and cursive, with the first name "Jackie" being more prominent.

Jackie Gomez-Whiteley
Senior Manager for Law Enforcement Operations
Center for Public Safety Management, LLC

THE ASSOCIATION & THE COMPANY

The [International City/County Management Association \(ICMA\)](#) is a 103-year old, non-profit professional association of local government administrators and managers, with approximately 13,000 members located in 32 countries.

Since its inception in 1914, ICMA has been dedicated to assisting local governments and their managers in providing services to their citizens in an efficient and effective manner. ICMA advances the knowledge of local government best practices with its **website**, www.icma.org, publications, research, professional development, and membership. The ICMA Center for Public Safety Management (ICMA/CPSM) was launched by ICMA to provide support to local governments in the areas of police, fire, and Emergency Medical Services.

The Center also represents local governments at the federal level and has been involved in numerous projects with the Department of Justice and the Department of Homeland Security. In 2014 as part of a restructuring at ICMA, the Center for Public Safety Management (CPSM) spun out as a separate company and is now the exclusive provider of public safety technical assistance for ICMA. CPSM provides training and research for the Association's members and represents ICMA in its dealings with the federal government and other public safety professional associations such as CALEA, PERF, IACP, IFCA, IPMA-HR, DOJ, BJA, COPS, NFPA, etc.

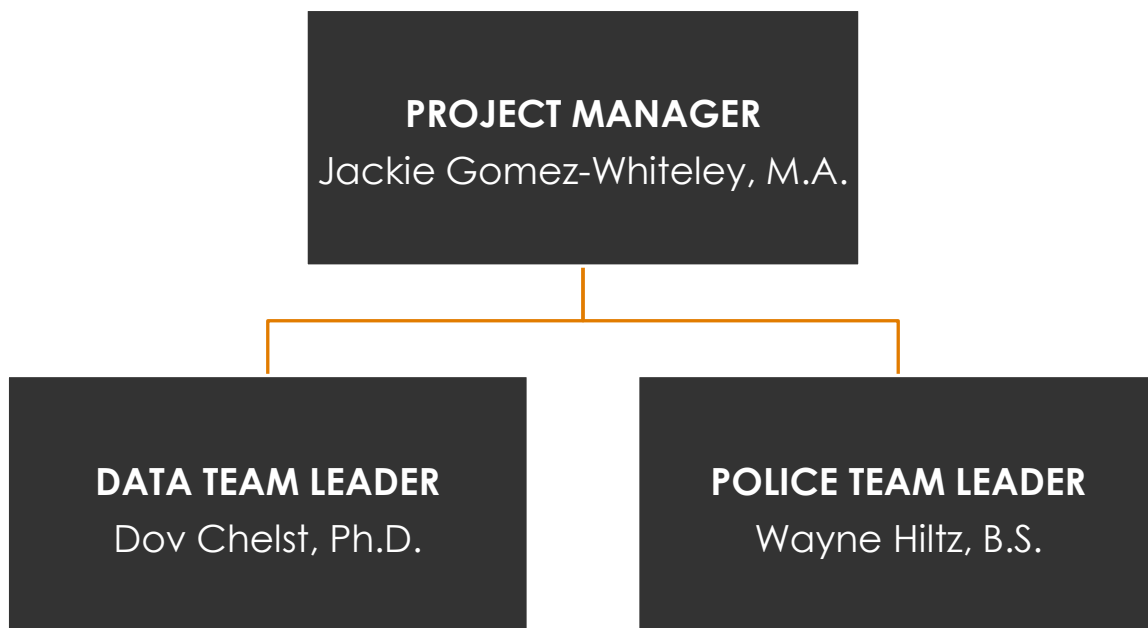
The Center for Public Safety Management, LLC maintains the same team of individuals performing the same level of service that it had for ICMA. CPSM's local government technical assistance experience includes workload and deployment analysis, using our unique methodology and subject matter experts to examine department organizational structure and culture, identify workload and staffing needs as well as industry best practices.

We have conducted over 341 such studies in 42 states and provinces and 246 communities ranging in population size 8,000 (Boone, IA) to 800,000 (Indianapolis, IN).

PROJECT STAFFING - POLICE

For this project CPSM will assemble a premier team of experts from a variety of disciplines and from across the United States. The goal is to develop recommendations that will enable it to produce the outcomes necessary to provide critical emergency services consistent with the community's financial capabilities. The team will consist of a project manager, two Operations Leaders and several senior public safety experts selected from our staff to meet the specific needs of the municipality.

The management organizational chart for the project includes the following key team members



DATA ASSESSMENT TEAM – PROJECT LEADER

DOV CHELST, PH.D.

Director of Quantitative Analysis

BACKGROUND

Dr. Chelst is an expert in analyzing public safety department's workload and deployment. He manages the analysis of all public safety data for the Center. He is involved in all phases of The Center's studies from initial data collection, on-site review, large-scale dataset processing, statistical analysis, and designing data reports. To date, he has managed over 140 data analysis projects for city and county agencies ranging in population size from 8,000 to 800,000.

Dr. Chelst has a Ph.D. Mathematics from Rutgers University and a B.A. Magna Cum Laude in Mathematics and Physics from Yeshiva University. He has taught mathematics, physics and statistics, at the university level for 9 years. He has conducted research in complex analysis, mathematical physics, and wireless communication networks and has presented his academic research at local, national and international conferences, and participated in workshops across the country.

SENIOR PUBLIC SAFETY SUBJECT MATTER EXPERT -- GIS

DAVID MARTIN, PH.D.

Senior Researcher in the Center for Urban Studies, Wayne State University

BACKGROUND

Dr. Martin specializes in public policy analysis and program evaluation. He has worked with several police departments to develop crime mapping and statistical analysis tools. In these projects, he has developed automated crime analysis tools and real-time, dashboard-style performance indicator systems for police executive and command staff. Dr. Martin teaches statistics at Wayne State University. He is also the program evaluator for four Department of Justice Weed and Seed sites. He is an expert in the use of mapping technology to analyze calls for service workload and deployments.

SENIOR PUBLIC SAFETY DATA ANALYST

PRISCILA MONACHESI, M.S., B.A.

BACKGROUND

Priscila Monachesi is a Senior Data Analyst with CPSM and has worked on over 40 data analysis projects for city and county public safety agencies. She has over ten years' experience as a Project Leader/Senior System Analyst in auto manufacturing and financial systems.

She has a M.S in Statistics from Montclair State University, a B.A. in Economics from Montclair State University, and a Technical Degree in Data Processing from Pontifícia Universidade Católica in Brazil.

PUBLIC SAFETY DATA ANALYST

SHAN ZHOU, PH.D.

BACKGROUND

Dr. Shan Zhou specializes in the analysis of police data. Shan brings extensive experience in scientific and clinical data analysis. Prior to CPSM, she worked as an associate scientist at Yale School of Medicine. Shan has a MS in Business Analytics and Project Management from University of Connecticut and a PhD in Cell biology, Genetics and Development from University of Minnesota.

PUBLIC SAFETY DATA ANALYST

XIANFENG LI, PH.D.

BACKGROUND

Dr. Xianfeng Li is a professional computational scientist and certified SAS programmer with a wealth of knowledge and research experience in Complex System Modeling, Data Analysis, and Statistical Physics. He is highly qualified in various coding programs and has earned numerous data science certifications. He previously worked as a Research Associate and Postdoctoral Fellow. Dr. Li earned his Ph.D. and master's degree in Polymer Science within the Institute of Chemistry from the Chinese Academy of Sciences in Beijing. He earned his bachelor's degree in Chemistry at Jilin University in Changchun.

PUBLIC SAFETY DATA ANALYST

LEAH BALTER, BA

BACKGROUND

Leah Balter has a background in applied mathematics and previously worked as a Supplemental Instruction Leader for Calculus I and II before becoming an Assistant Property Supervisor. Her skill set includes proficiency in various programming languages such as C++, R, and MATLAB. Ms. Balter has strong written and oral communication skills and is an adept multitasker with high attention to detail. She earned her B.S. in Applied Mathematics from the University of California, Los Angeles.

OPERATIONS ASSESSMENT TEAM – POLICE UNIT

POLICE PROJECT MANAGER

CHIEF JACKIE GOMEZ-WHITELEY (RET.), B.A., M.A.O.L.

Retired Orange County, California Police Department, Program Director for California Police Chiefs Executive Leadership Institute

BACKGROUND

Chief Jackie Gomez-Whiteley is a 33-year law enforcement professional serving with distinction in both Orange and Los Angeles County. In 1986, she began her sworn career at the Orange Police Department where she served in all three divisions: Patrol, Investigations, and Administration. She was the department's first woman motor officer, as well as sergeant and lieutenant. In 1989, Jackie was involved in an officer-involved shooting of a kidnap and attempted murder suspect. As a result of her actions, she was awarded the Medal of Valor.

After 23 years at Orange PD, she accepted a position as Captain at the Cypress Police Department where she oversaw both divisions: Operations and Support Services. In 2011, she was appointed Chief of Police and the first woman to serve as Police Chief of a municipal agency in Orange County. She retired in 2015 and shortly thereafter, served as Interim Police Chief for the Alhambra Police Department. From 2018 through 2019, she served as Interim Police Chief for the Pacific Grove Police Department.

Chief Gomez-Whiteley obtained her Master of Arts degree from Chapman University in Organizational Leadership with a certificate in Public and Non-Profit Leadership. She has a Bachelor of Arts degree from Loyola Marymount University in Psychology with a minor in Alcohol and Drug Studies. In 2007, Jackie graduated from the P.O.S.T. Command College, where she published an article in Police and Security News Magazine titled: Dirty Bombs: Calculating the Threat.

Chief Gomez-Whiteley has been an adjunct instructor at various law enforcement training centers throughout the state for 29 years and is Program Director for the prestigious California Police Chiefs Executive Leadership Institute (CPCELI) at Drucker.

Chief Gomez-Whiteley is a volunteer and President of Officers Give Hope, a non-profit organization dedicated to hosting marrow donor drives in the public safety community throughout the State of California. She is a member of the California Police Chiefs' Association, California Peace Officers' Association and International Association of Chiefs of Police. Chief Gomez-Whiteley continues to serve on many boards, including Orange County Exploring Learning for Life.

POLICE SENIOR MANAGER

CAPTAIN CAROL E. RASOR-CORDERO, PH.D. (RET).

Retired Captain, Pinellas County, Florida Sheriff's Office, Associate Professor Public Safety Administration, St. Petersburg College

BACKGROUND

Dr. Rasor-Cordero is a retired Captain from the Pinellas County Sheriff's Office in Florida. During her 25-year career in law enforcement, she served in various divisions including: Patrol Operations, Crimes Against Children, Economic Crimes, Training, Community Services, and Court Security. While serving as the Commander of the Community Services Division, she established

the Domestic Violence Unit, the Sexual Predator and Offender Unit, and the Citizen's Community Policing Institute. She served as the agency's training advisor and played a significant role in transforming the Pinellas County Police Academy from a vocational program to a progressive program that offers college credit from St. Petersburg College. She served as team leader for the agency's Hostage Negotiation Team and implemented the agency's Critical Incident Stress Management Team.

Dr. Rasor-Cordero has conducted research examining the relationship between personality preferences of executive-and mid-level law enforcement/corrections leaders and exemplary leadership practices. She has an extensive background as an educator and trainer. As a program director for St. Petersburg College, Dr. Rasor-Cordero established the first and only academic on-line gang-related investigations track in the nation. She developed the Evolving Leaders in a Changing World course for the Southeastern Public Safety Leadership Institute at St. Petersburg College, which is a six-part series and approved for college credit. She designed a three-part series for implementing, managing and evaluating community policing for the Florida Regional Community Policing Institute and delivered the training throughout Florida to mid- and executive-level leaders. Dr. Rasor-Cordero has developed and delivered training in the high liability areas of firearms, defensive tactics and driving. She has served as an evaluator for "An Evaluation of the National Justice Based After School Pilot Program" for the Office of Community Oriented Policing Services and a consultant for the Bureau of Justice Assistance evaluating the training needs of the Atlanta Police Department's Narcotics Unit. She has authored articles and presented at numerous conferences.

Dr. Rasor- Cordero is currently an associate professor for the College of Public Safety Administration, St. Petersburg College. She holds a Ph.D. in Education and master's and Bachelor's Degrees in Criminal Justice from the University of South Florida. She is a graduate of the Police Executive Research Forum Senior Management Institute for Police.

SENIOR ASSOCIATE

DEPUTY CHIEF WAYNE HILTZ (RET), B.S.

Former Interim Chief of Police at Pasadena and Irwindale Police Departments

BACKGROUND

Wayne has 33 years of experience in municipal law enforcement. This includes a broad range of experience in nearly every facet of policing from patrol, gang enforcement, and undercover narcotics to internal affairs investigations and community relations. The last 13 years were spent at command and executive levels. In his capacity as Deputy Police Chief, he served as the chief operating officer of the Pasadena Police Department, responsible for all day to day operations including internal audits and inspections. As well, he was responsible for operations related to the Tournament of Roses Parade and Rose Bowl events to include World Cup Soccer and BCS Championship games. For a period of nearly two years, he served in the capacity of Interim Chief of Police at both the Pasadena and Irwindale Police Departments.

He has extensive experience in managing budgets and has served as a budget instructor for the California Commission on Peace Officer Standards and Training. He was selected by the Los Angeles County Police Chiefs Association to represent the 45 member agencies in negotiations for Homeland Security Grants for a three-year period. He also served as President of the San Gabriel Peace Officers Association. He has served on the boards of community-based organizations with focus on addressing homeless issues, substance abuse, and juvenile violence. Wayne holds a Bachelor of Science degree in Police Science and Administration from California State University at Los Angeles. Executive training includes the FBI Southwest Command College and the Senior Management Institute for Police.

SENIOR ASSOCIATE

CHIEF MARILYN DIAZ (RET.), B.S., M.S.

Retired Chief of Police, Sierra Madre, and Retired Commander, Pasadena, California Police Department.

BACKGROUND

In 1974 Marilyn Diaz began her career when she was hired as the first woman to be directly assigned as a patrol officer in the Pasadena Police Department. She promoted through the ranks, and in 2006 Marilyn retired as a Commander, where she led the Administrative Services and Field Operations Divisions.

In March of 2006 Marilyn was appointed as Sierra Madre's Chief of Police. Chief Diaz was the first woman in Los Angeles County to become chief of a municipal police department. Marilyn retired from the Sierra Madre Police Department in December 2011.

Ms. Diaz has a master's degree in Education from the University of Southern California, and earned her bachelor's degree in Police Science at California State University, Los Angeles.

Marilyn Diaz has served on the boards of Women at Work, Boy Scouts of America, Pacific Clinics, and the Caltech Women's Club. Marilyn also serves as a docent for the Caltech Architectural Tour Service and is on the Caltech Women's Club Board. Marilyn is President of the Rotary Club of Sierra Madre for 2013-2014. She also teaches Youth Protection at the Rotary District level.

SENIOR ASSOCIATE

CHIEF CRAIG JUNGINGER (RET), BS, MPA

Retired Chief of Police, Gresham, Oregon, former Huntington Beach Police Captain

BACKGROUND

Chief Junginger had over 38 years' experience as a law enforcement professional. He served as the Chief of the Gresham, Oregon Police since December 2008 until his retirement in June 2016. Gresham is a community with a population of 110,000 just to the east of Portland. He led a department of 130 sworn officers and 47 civilian employees, with a budget of \$31 million. He also served on the board of the Oregon Police Chief's Association.

Chief Junginger began his career at the Bell-Cudahy Police department in 1979. He worked as a K-9 Officer, Detective, and Patrol Officer. In 1985 he transferred to the Huntington Beach Police Department where he remained until his retirement in November 2008. While at Huntington Beach, he was a Patrol Officer, Beach Detail Officer, Field Training Officer, SWAT Officer, Traffic Motor Officers, Community Policing Officer, and Narcotics Detective. In 1999 he promoted to Sergeant where he worked Patrol, Downtown Foot Beat, Support Services, Vice and Intelligence and Internal Affairs. He promoted to Lieutenant in 2003 and worked as the Community Policing Commander responsible for all major event planning, Watch Commander and as the Chief's Executive Officer. In 2007 he promoted to the rank of Captain and was assigned to Administrative Operations consisting of Communications, Budget, Personnel, and Property and Evidence.

He holds a master's degree from California State University, Long Beach, a Bachelor's Degree from University of La Verne and an Associate's Degree from Rio Hondo Community College.

He attended the FBI National Academy Class 224 in Quantico Virginia, California Post Command College, West Point Leadership Program, POST Executive Development Program and the POST Supervisory Leadership Institute. While in Command College he was published for his

article "How will we train police recruits of the millennial generation in the year 2012," and as the Chief of Gresham he was published for an article he authored on leadership.

He was awarded the Medal of Valor in 1989 for his encounter with an armed bank robber.

SENIOR ASSOCIATE

INSPECTOR JAMES E. MCCABE, (RET.), PH.D., M. PHIL., M.A., B.A.

Professor of Criminal Justice, Sacred Heart University, Retired NYPD Inspector

BACKGROUND

Dr. McCabe retired as an Inspector with the New York City Police Department after 20 years of service. As Inspector his assignments included Commanding Officer of the NYPD Office of Labor Relations and Commanding Officer of the Training Bureau. As a Deputy Inspector he was the Commanding Officer of the Police Academy with direct supervision of over 750 staff officers and 2,000 recruits. As Executive Officer, Police Commissioner's Office. His field experience includes, Commanding Officer, 110th Precinct, Executive Officer, 113th Precinct, assignment to the Operations Division/Office of Emergency Management and uniform patrol as an officer and Sergeant in Manhattan. He has published extensively and presented to numerous conferences including Academy of Criminal Justice Sciences:

He holds a Ph.D. and M. Phil. in Criminal Justice, from CUNY Graduate Center, an M.A. in Criminal Justice, from John Jay College, an M.A. in Labor and Policy Studies, SUNY Empire State College, and B.A. in Psychology, CUNY Queens College, June 1989. He is a graduate of the Executive Management Program, Harvard University's John F. Kennedy School of Government, and the FBI National Academy.

SENIOR ASSOCIATE

PROFESSOR PAUL E. O'CONNELL, PH.D., J.D.

Chair of Criminal Justice Department, Iona College, New Rochelle, New York, former NYPD Training Officer.

BACKGROUND

Dr. O'Connell is a leading expert on the application of Compstat model Police Management principles to public administration organizations. He has been a full-time member of the Criminal Justice faculty at Iona College in New Rochelle since 1994. He received his Ph.D. from CUNY where his doctoral thesis was the history and development of the Compstat model of Police Management. Dr. O'Connell began his professional career in criminal justice in 1981, serving the New York City Police Department first as a police officer, and then as a Police Academy instructor, in-service trainer and curriculum developer. After receiving an MPA in 1984 and J.D. in 1989, he worked as a trial attorney with the firm of Cummings & Lockwood in Stamford, CT. Presently, he is the chair of Iona College's Criminal Justice department, where he also conducts funded research, publishes scholarly papers and lectures widely on the topics of police performance measurement, integrity management and law enforcement training systems.

Dr. O'Connell has provided consulting services to a variety of government agencies, including assessment of existing policing policies and practices and development of proactive management strategies. Over the years, he has collaborated with the Center for Technology in Government (Albany, NY), Giuliani Partners (New York, NY) and the Center for Society, Law and

Justice (University of New Orleans). Dr. O'Connell recently was awarded a Fulbright Grant working with the Turkish National Police.

SENIOR ASSOCIATE

CHIEF DEMOSTHENES M. LONG (RET.), ED.D. JD, MA

Former Assistant Chief of NYPD, Commanding Officer NYPD Police Academy, Former Deputy Commissioner / Undersheriff Westchester County Public Safety Department

BACKGROUND

Chief Long has 30 years law enforcement experience, including 21 years with The New York City Police Department where he retired as Assistant Chief. His assignments included Commanding Officer, School Safety Division, where he managed 4,600 police officers and school safety agents and administered an operating budget of \$133 million. He served as Commanding Officer, Office of Deputy Commissioner Community Affairs where he was responsible for developing, implementing and assessing programs to strengthen police/community relations; Commanding Officer, Police Academy, responsible for providing entry-level, in-service, promotional and executive level training for 53,000 uniform and civilian members of the Department; Executive Officer, Office of the First Deputy Commissioner and Executive Officer, 47th Precinct and also assignment as Supervisor of Patrol for 17 Bronx Precincts, Transit Districts and Housing Police Service Areas.

After retiring from the NYPD he was appointed as First Deputy Commissioner / Undersheriff for the Westchester County Department of Public Safety. Responsibilities include the administrative planning, organization, coordination, execution and control of the fiscal, administrative, support and training functions of the 325 member police department.

He holds a Doctor of Education Degree in Executive Leadership from St. John Fisher College, a Juris Doctor Degree from New York Law School, and Master of Arts and Bachelor of Science degrees from John Jay College of Criminal Justice.

SENIOR ASSOCIATE

CAPTAIN JOHN CLARK (RET.), B.A.

Los Angeles County Sheriff's Department

BACKGROUND

John Clark served with the Los Angeles County Sheriff's Department for over thirty-three years. His broad experience includes command, administrative, operational and tactical assignments in Patrol, Detective, Custody, Court, and Administrative divisions. The last eight years were spent at command level posts.

As Captain, he was in command of various units including internal investigations, financial and cybercrimes, custody operations and inmate transportation, responsible for the administrative and operational management of each. John also managed the Southern California High Tech Taskforce comprised of Federal, State and local agencies as part of his command duties.

Throughout his career, John was a command and operations level member of a county-wide team responsible for managing all department resources during natural disasters, civil disturbances and other high-profile events such as political conventions and sporting events. John was a member of the International Association of Financial Crimes Investigators, the

Southern California Jail Managers Association, the Los Angeles Superior Court Management Group, and the San Gabriel Valley Peace Officers Association. He also served as an adjunct faculty member for a local community college. John holds a Bachelor of Arts in Criminal Justice from the California State University, Fullerton.

THE CPSM APPROACH

The CPSM team developed a standardized approach to conducting analyses of police departments by combining the experience sets of dozens of subject matter experts.

We begin projects with a request for data, documents and worksheets.

Next, we extract raw data on calls for service from an agency's computer-aided dispatch system. The data are sorted and analyzed to identify performance indicators (i.e., response times, workload by time, multiple unit dispatching, etc.) for comparison to industry benchmarks. Performance indicators are valuable measures of agency efficiency and effectiveness. The findings are shown in tabular as well as graphic form and follow a standard format for presentation of the analyzed data. While the format will be similar from community to community, the data reported are unique to the specific agency.

CPSM also conducts an on-site operational review. Here the performance indicators serve as the basis for the operational reviews. Prior to any on-site review, agencies are asked to compile several key operational documents (i.e., policies and procedures, assets lists, etc.). Most on-site reviews consist of interviews with management and supervisors, as well as rank and file officers; attendance at roll calls and ride-alongs with officers. We review case files with investigators and observe dispatch operations to assess compliance with the provided written documentation.

As a result of on-site visits and data assessments, our subject matter experts produce a SWOT analysis (strengths, weaknesses, opportunities and threats) of the department. We have found that this standardized approach ensures that we measure and observe all of the critical components of agencies.

Additionally, this methodology can be integrated with ongoing support customized to the unique needs of your community. Strategic planning, risk assessment, and training services are also available to assist with the implementation of CPSM recommendations and developing new processes and programs that may arise as implementation evolves.

The following information describes the CPSM approach to studying, understanding, evaluating, and reporting on police departments around the country. Although no two police departments are the same, a standardized approach to department evaluation ensures a rigorous and methodological process that permits benchmarking, comparing, and assessing within the context of the best practices of American law enforcement. However, each locality has unique characteristics that present policing challenges. Integrating a standardized approach within the context of local variability permits an accurate assessment of the organization in its political environment, and further permits CPSM to offer recommendations that comport with the best practices in policing, yet customized for the client community.

I. Benchmark the Community

It is essential to understand the service levels, protection needs, community dynamics, and overall environment within which the police department operates. The CPSM study may involve interviews directed at stakeholders in the community, which could include elected officials and employee labor representatives who would be contacted to solicit their opinions about the department, the public safety needs of their constituency, and the perceived gaps in service levels currently provided. CPSM may work with the agency to identify community members that can provide this important information. Additionally, the department will be compared to organizations of similar size with respect to crime, demographics, and cost-efficiency.

II. Patrol Operations

Police agencies routinely speak about “recommended officers per 1,000 population” or a “National Standard” for staffing or comparisons to other municipalities. There are no such standards, nor are there “recommended numbers of “officer per thousand”. The International Association of Chiefs of Police (IACP) states; “Ready-made, universally applicable patrol staffing standards do not exist. Ratios, such as officers-per-thousand population, are totally inappropriate as a basis for staffing decisions.”

Staffing decisions, particularly in patrol, must be made based upon actual workload and very few police agencies have the capability of conducting that analysis. Once an analysis of the actual workload is made, then a determination can be made as to the amount of discretionary patrol time that should exist, consistent with the local government's ability to fund.

CPSM's team of doctoral level experts in Operations Research in Public Safety have created in **The CPSM Patrol Workload & Deployment Analysis System®** the ability to produce detailed information on workload even in those agencies without sophisticated management information systems. Using the raw data extracted from the police department's CAD system our team converts calls for service into police services workload and then effectively graphs workload reflecting seasonally, weekday / weekend and time of day variables. Using this information, the police department can contrast actual workload with deployment and identify the amount of discretionary patrol time available (as well as time commitments to other police activities).

Police service workload differentiates from calls for service in that calls for service are a number reflecting the incidents recorded. Workload is a time measurement recording the actual amount of police time required to handle calls for service from inception to completion. Various types of police service calls require differing amounts of time (and thus affect staffing requirements). As such, call volume (number of calls) as a percentage of total number of calls could be significantly different than workload in a specific area as a percentage of total workload. The graph below demonstrates this difference in units.

CPSM has found that the most effective way to manage operations, including policing, is to make decisions based upon the interpretation and analysis of data and information.

To achieve this, a data analysis of police department workload, staffing and deployment will be conducted. By objectively looking at the availability of deployed hours and comparing those to the hours necessary to conduct operations, staffing expansion and/or reductions can be determined and projected. Additionally, the time necessary to conduct proactive police activities (such as team-led enforcement, directed patrol, community policing and selected traffic enforcement) will be reviewed to provide the city with a meaningful methodology to determine appropriate costing allocation models.

Workload vs. Calls for Service (CFS)

CFS is a number – Workload is the cumulative time it takes to handle the call for service, including all responding officers.

A burglary is one call for service. However, if three officers respond and two are there for an hour and the third is there for 30 minutes the Workload is 2 ½ hours.

Once an analysis of the actual workload is made, then a determination can be made as to the amount of discretionary patrol time that should exist.

Workload vs. deployment analysis sample

This is one of the ways we show the amount of available, non-committed patrol time compared to workload. As you can see, we break out the various activities, convert them to time and then compare to available manpower. The deployment is based upon actual hours worked.

So, in this example, at noon there are approximately 9 hours of work (including citizen-initiated and officer-initiated calls for services, including traffic) and administrative activities (meals,

vehicle, reports, etc.). There are approximately 15 man-hours of available resources meaning that at that hour, on average, of the 15 officers on duty 9 are busy on activities.

The area shown in green and brown is uncommitted time. This is the area where staffing decisions impact – it becomes a policy issue as to how much uncommitted time a city wants and is willing to pay for.

Figure 7: Deployment and Main Workload, Weekdays, Summer

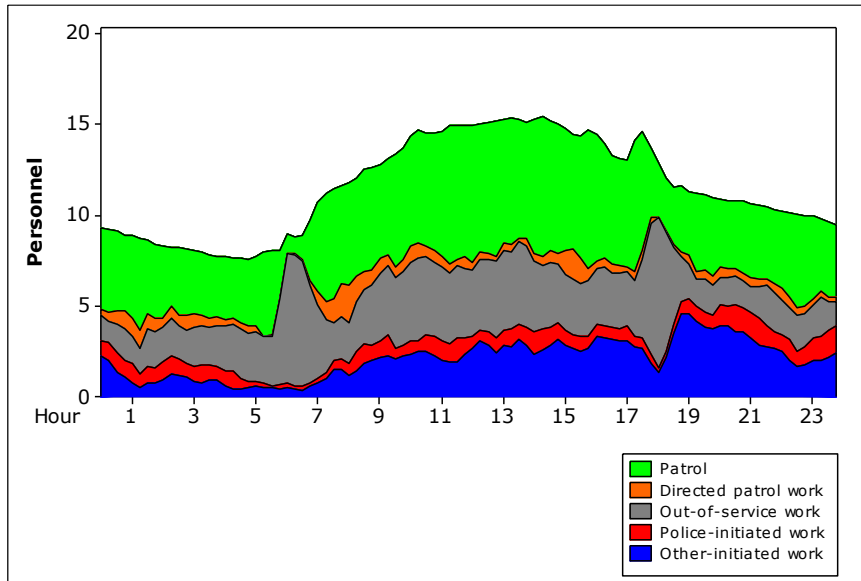
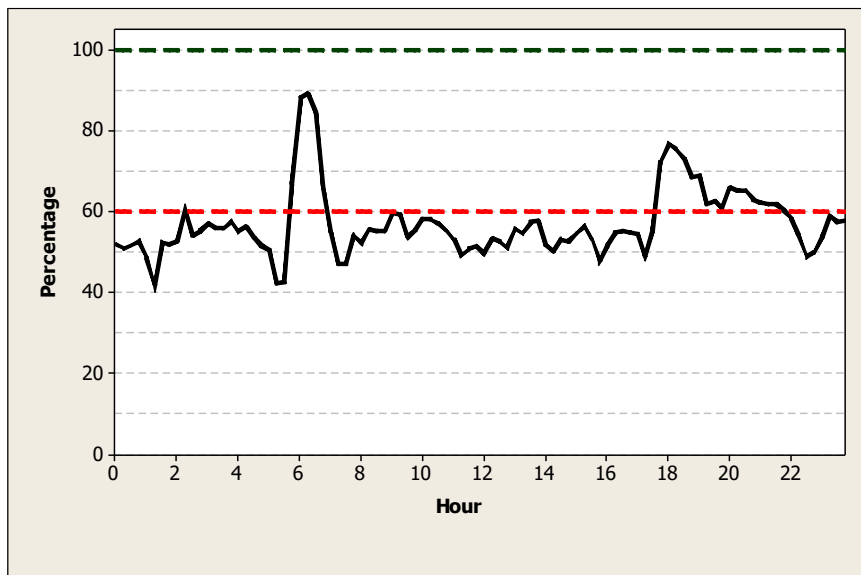


Figure 8: Workload Percentage by Hour, Weekdays, Summer



Workload vs. Deployment – Weekdays, Summer

Avg. Workload:	6.5 officers per hour
Avg. % Deployed (SI):	57 percent
Peak SI:	89 percent
Peak SI Time:	6:15 a.m.

The CPSM study will result in the calculation of service demands placed on the department, workload levels, service times for calls for service, and response times. This information is developed by first extracting data from the departments CAD system. The extracted information is then processed, and workload is calculated. This workload is then compared to deployment levels. The product of this analysis is the variance between service demands and available personnel, and appropriate recommendations made for staffing levels and an optimal deployment schedule to meet these service demands. This permits exploration of the following questions:

- What are the service demands made by the public as measured through the CAD system?
- What is the workload?
- Based on this workload is the alignment of Districts and Divisions appropriate?
- Based on the workload is the shift schedule aligned appropriately and what alternatives to the current shift plan are most efficient?
- How many police officers and supervisors are needed to staff the patrol function in order to meet the workload demands placed on the agency?
- How long does it take to respond to calls for service (both response time and total time) and what ways are there to reduce these times?
- How many officers are assigned to each call and what are the ways to minimize these assignments?
- What categories of call, and in what frequency, does the agency handle and what measures can be adopted to minimize unnecessary responses?
- How much time is spent on administrative duties?
- How much time is spent on directed patrol activities and specialized enforcement?

The study will determine the gaps in patrol coverage and recommendations for modifying temporal and spatial deployment. With the appropriate “best fit” of patrol coverage identified, a determination can be made about the exact number of officers required to meet service demands, and in what shift/district/division combinations to maximize resources.

In addition to the analysis of patrol operations from the CAD system and workload, the CPSM study will focus on the qualitative aspects of patrol. The study will observe officers on patrol through ride-alongs, interviews, and general observations. We will amass all available documents, plans, and data available to understand the patrol approach in the department. We will observe the special operations teams, the problem/nuisance unit, etc. to evaluate their role within the overall mission of the department and patrol operations. We will evaluate the performance of the units, identify improvement opportunities, and justify and recommend appropriate staffing levels

The CPSM study will also evaluate the implementation of technology on patrol, weapons available, and equipment used with opportunities for improvement.

CPSM advocates community policing as its operational philosophy. The CPSM study would evaluate the implementation of community policing, in quantifiable and anecdotal terms, and identify improvement opportunities where appropriate.

Similarly, the CPSM study would evaluate the relationship of patrol operations with the rest of the department. To what extent does this bureau work, coordinate, and communicate with the other operational and support functions of the department? How should it? What are the strategic, management, and planning functions of the department with regards to the patrol function and how does patrol operations respond to the mission of the organization? How are crime, traffic, disorder, and quality of life problems handled?

III. Investigations

The CPSM study will assess investigations – both reactive and proactive. The CPSM team will explore the following questions:

- Staffing – Are there enough investigators available to handle the workload?
- Workload – What is the workload; how many cases do investigators handle; is the specialization appropriate?
- Case management – Is there an effective case management system in place?
- Effectiveness & Efficiency – How much time does it take to investigate cases? Are victims kept informed? Are cases cleared and offenders held accountable? How much overtime is spent?
- Intelligence – How is intelligence gathered and disseminated (inside and outside the department)? Does the investigations function make use of intelligence?
- Civilianization opportunities – What are the potential areas for civilianization?
- Technological opportunities – Is technology being leveraged to improve investigations?
- Crime scene – Are crime scenes being processed efficiently, and are appropriate follow-up investigations being conducted?
- Proactive Investigations – the same approach and inquires found in sections above are applied to each specialized investigative unit in the department.
 - Narcotics
 - Violent Offenders
 - Warrants and Fugitives
 - Bombings and Arson
 - Fraud/Cyber crimes
 - All other specialized investigations units

CPSM will essentially evaluate each investigative unit operating in the agency. This evaluation will assess the performance of the unit, how the unit operates within the overall mission of the department, compare operations to best practices in law enforcement, identify improvement opportunities, and identify appropriate staffing levels.

IV. Administration and Support

Once again, CPSM will evaluate every administrative and support unit in the police department. This evaluation will involve:

- Staffing;
- Workload;
- Civilianization possibilities;
- Cost saving opportunities;
- Out-sourcing opportunities;

Best practice comparisons and opportunities for improvement.

The CPSM team has subject matter experts in police management and administration and will explore administration and support activities in the area of professional standards (Internal investigations, hiring and recruitment, disciplinary system, promotional system), training (both academy and in-service), records management, evaluating the critical, frequent, and high liability policies, facility, fleet, equipment, information technology, property management system, laboratory, planning and research, sick-time management, overtime, communications and dispatch, etc.

In general, we look at every unit identified as a discrete operational/support entity for the following:

- Describe the functions of the unit;
- Evaluate the performance of the unit. In most cases this is a quantitative; evaluation, but in units not appropriate for quantification, a qualitative evaluation is provided;
- Identification of improvement opportunities
- An evaluation and justification, and recommendation for appropriate staffing levels.

V. Organizational Culture

During the operational evaluation described above, organizational “themes” emerge. What does the department “think” about providing police service to the community and how does this thinking align with the stated mission and department policies? How does the department interact with the community and internally with its own members? In general, what is the culture of the organization?

The culture of a police organization reflects its members and the community it serves. Through focus groups, interviews, and observations, the CPSM team will evaluate operational readiness and need. This part of the CPSM study is critical to the overall success of the project as it provides a better understanding of the police department and how the workload, staffing, and community dynamics shape the mission, goals, operations, and needs of the organization. In addition, as an option, every member of the department can be given the opportunity to participate in an anonymous survey. This survey is designed to understand the culture of the department, assess internal and external communications, and determine what it “thinks” about various elements of organizational life.

VI. Organizational Structure and Administration

Based on the above, we can analyze current management structure and practice and make recommendations to improve organizational administration. The product of this analysis is a proposed staffing mode. The product of this analysis also generally ends up with a leaner, flatter, and more efficient organizational design.

VII. Performance Management

The overarching philosophy of the CPSM approach is to evaluate the police department in terms of performance management. Identifying workload, staffing, and best practices is just the beginning. It is also important to assess the organization's ability to carry out its mission. Essentially, does the police department know its goals, and how does it know they are being met. It is very difficult for an organization to succeed at any given level of staffing unless it has a clear picture of success. How does the department “think” about its mission, how does it identify and measure what's important to the community, how does it communicate internally and externally, how does it hold managers accountable, and how does it know the job is getting done? The CPSM team will evaluate the department and make recommendations to assist with improving capacity in this area, if necessary. In addition, CPSM can offer performance management training and mentoring services to support organizational success.

PROJECT SCHEDULE

Milestone 1 – Full execution of the agreement

Agreement will identify Project Launch date.

Milestone 2 – Project Launch

We will conduct an interactive telephone conference with local government contacts. Our project leads will launch the project by clarifying and confirming expectations, detailing study parameters, identifying agency point of contacts and commencing information gathering.

Milestone 3a – Information Gathering and Data Extraction – 30 Days

Immediately following project launch, the operations leads will deliver an information request to the department. This is an extensive request which provides us with a detailed understanding of the department's operations. Our experience is that it typically takes an agency several weeks to accumulate and digitize the information. We will provide instructions concerning uploading materials to our website. When necessary, the lead will hold a telephone conference to discuss items contained in the request. The team lead will review this material prior to an on-site visit.

Milestone 3b – Data Extraction and Analysis – 14 Days

Also, immediately following the project launch the Data Lead will submit a preliminary data request, which will evaluate the quality of the Computer Aided Dispatch (CAD) system data. This will be followed by a comprehensive request for data from the CAD system to conduct the response and workload analysis. This request requires a concerted effort and focused response from your department to ensure the timely production of required for analysis. Delays in this process will likely extend the entire project and impact the delivery of final report. The data team will extract one year's worth of Calls for Service (CFS) from the CAD system. Once the Data Team is confident the data are accurate, they will certify that they have all the data necessary to complete the analysis.

Milestone 3c – Data Certification – 14 days

Milestone 4a – Data Analysis and Delivery of Draft Data Report – 30 days

Within thirty days of data certification, the analysis will be completed and a draft, unedited data report will be delivered to the department for review and comment. After the data draft report is delivered, an on-site visit by the operations team will be scheduled.

Milestone 4b – Departmental Review of Draft Data Report – 14 days

The department will have 10 days to review and comment on the draft unedited data analysis. During this time, our Data team will be available to discuss the draft report. The Department must specify all concerns with the draft report at one time.

Milestone 4c – Final Data Report – 10 days

After receipt of the department's comments, the data report will be finalized within 10 days.

Milestone 5 – Conduct On-Site Visit – 30 days

Subject matter experts will perform a site visit within 30 days of the delivery of the draft data report.

Milestone 6 – Draft Operations Report – 30 days

Within 30 days of the last on-site visit, the operations team will provide a draft operations report to the department point of contact. Again, the department will have 10 days to review and comment.

Milestone 7 – Final Report 15 days

Once the Department's comments and concerns are received by CPSM the combined final report will be delivered to the City within 15 days.

TOTAL ELAPSED TIME: 105 – 135 days

PROPOSED FEES

The quotation of fees and compensation shall remain firm for a period of 90 days from this proposal submission.

CPSM will conduct the analysis of the police department for \$66,000 exclusive of travel. The project would be billed in three installments: 40% upon contract signing ; 40% with delivery of the draft police data analysis; and the remaining 20% with delivery of the draft final report. Following delivery of the draft reports, the City will have 30 days to provide comments as to accuracy, and a final report will be delivered within 30 days of the comment period.

Travel expenses will be billed as incurred at actual cost with no overhead or administrative fees applied.

NOTE: If the chief administrative officer is a member of ICMA, the fee – exclusive of travel costs – will be reduced by 10% to \$59,400.

Deliverables

Draft reports will be provided for department review in electronic format.

In order to be ecologically friendly, CPSM will deliver the final report in computer readable material either by email, CD or both. The final reports will incorporate the operational as well as data analysis. Should the municipality desire additional copies of the report, CPSM will produce and deliver whatever number of copies is requested, which will be invoiced at cost.

Should the local government desire additional support or in-person presentation of findings, CPSM will assign staff for such meetings at a cost of \$2,500 per day/per person plus travel expenses.

CONCLUSION

Part of ICMA's mission is to assist local governments in achieving excellence through information and assistance. Following this mission, Center for Public Safety Management, LLC acts as a trusted advisor, assisting local governments in an objective manner. CPSM's experience in dealing with public safety issues combined with its background in performance measurement, achievement of efficiencies, and genuine community engagement, makes CPSM a unique and beneficial partner in dealing with issues such as those being presented in this proposal. We look forward to working with you in the near future.

PAST & CURRENT ENGAGEMENTS

LOCALITY	ST	PROJECT DESCRIPTION
Edmonton	AB	Comprehensive Analysis of Fire Services.
Leduc County	AB	Fire Consolidation Plan
Leduc	AB	Comprehensive Analysis of Fire Services.
Kenai	AK	Comprehensive Analysis of Fire Services
Anniston	AL	Comprehensive Analysis of Police Services
Auburn	AL	Comprehensive Analysis of Fire Services
Auburn	AL	Comprehensive Analysis of Police Services
Dothan	AL	Comprehensive Analysis of Police Services
Pelham	AL	Police Chief Selection
Casa Grande	AZ	Comprehensive Analysis of Police Services
Florence	AZ	Comprehensive Analysis of Police Services
Glendale	AZ	Fire Data Analysis
Lake Havasu City	AZ	Comprehensive Analysis of Police Services
Lake Havasu City	AZ	Comprehensive Analysis of Fire Services
Pinal County	AZ	Comprehensive Analysis of Sheriff's Office
Pinal County	AZ	Sheriff's Office Firearms Audit
Prescott	AZ	Comprehensive Analysis of Fire Services
Prescott	AZ	Comprehensive Analysis of Police Services
Queen Creek	AZ	Fire Standards of Coverage Study
Queen Creek	AZ	Police Strategic Plan
Queen Creek	AZ	Comprehensive Analysis of Fire services
Scottsdale	AZ	Comprehensive Analysis of Police Services
Tucson	AZ	Comprehensive Analysis of Police Services
Youngtown	AZ	Comprehensive Analysis of Police Services
Alameda	CA	Comprehensive Analysis of Fire Services
Alameda	CA	Comprehensive Analysis of Police Services
Burbank	CA	Analysis of Investigations Workload / Staffing
Carlsbad	CA	Comprehensive Analysis of Police Services
El Centro	CA	Comprehensive Analysis of Police Services
El Centro	CA	Comprehensive Analysis of Fire services
Fairfield	CA	Comprehensive Analysis of Police Services
Greenfield	CA	Comprehensive Analysis of Police Services
Hermosa Beach	CA	Comprehensive Analysis of Fire services
Hermosa Beach	CA	Comprehensive Analysis of Police Services
Huntington Park	CA	Comprehensive Analysis of Police Services
Indio	CA	Police Patrol Workload Analysis

Kern County	CA	Comprehensive Analysis of Fire Services
Laguna Woods	CA	Review of Sheriff's Office Service
Laguna Woods	CA	Review of Sheriff's Office Service 2017
Laguna Woods	CA	Review of Sheriff's Office Service 2019
Milpitas	CA	Comprehensive Analysis of Police Services
Morgan Hill	CA	Comprehensive Analysis of Police Services
Morgan Hill	CA	Comprehensive Analysis of Fire Services
Palm Desert	CA	Comprehensive Analysis of Fire Services
Palo Alto	CA	Comprehensive Analysis of Fire Services
Pasadena	CA	Police Patrol Workload Analysis
Placentia	CA	Comprehensive Analysis of Police Services
Placentia	CA	Fire Services Contract Analysis
Rohnert Park	CA	Comprehensive Analysis of Police Services
Salinas	CA	Comprehensive Analysis of Police Services
Salinas	CA	Comprehensive Analysis of Fire Services
San Diego County	CA	EMS Study
San Jose	CA	Fire Study Review
San Jose	CA	Police Study Review
San Mateo	CA	Dispatch Operations Review
Santa Ana	CA	Comprehensive Analysis of Police Services
Santa Clara	CA	Comprehensive Analysis of Police Services
Santa Cruz	CA	Comprehensive Analysis of Police Services
Santa Monica	CA	Police Chief Selection
Santa Rosa	CA	Performance Measurement Analysis
Stockton	CA	Comprehensive Analysis of Police Services
Stockton	CA	Comprehensive Analysis of Fire Services
Torrance	CA	Police Strategic Plan
Union City	CA	Comprehensive Analysis of Fire Services
Whittier	CA	Comprehensive Analysis of Police Services
Woodlands	CA	Police Chief Selection
Yuba City	CA	Comprehensive Analysis of Fire Services
Yuba City	CA	Comprehensive Analysis of Police Services
Federal Heights	CO	Comprehensive analysis of Police Services
Federal Heights	CO	Comprehensive analysis of Fire Services
Littleton	CO	Comprehensive Analysis of Fire Services
Littleton	CO	Review of Fire Consolidation Proposal
Steamboat Springs	CO	Comprehensive Analysis of Fire Services
Cheshire	CT	Police Management Review
Southington	CT	Comprehensive Analysis of Fire Services
Bethany Beach	DE	EMS Apparatus Review
Bethany Beach	DE	EMS Review
S. Bethany Beach	DE	Police Department Review

Dover	DE	Comprehensive Analysis of Police Department
Dover	DE	Comprehensive Analysis of Fire Services
Alachua	FL	Expert Witness Law Enforcement Issues
BCCMA	FL	Review of Broward Sheriff's Office Services
Tamarac	FL	Analysis of Sheriff's Contract Services
Inverness	FL	Comprehensive Analysis of Fire Services
Citrus County	FL	Comprehensive Analysis of Fire Services
Cocoa	FL	Comprehensive Analysis of Police Services
Coconut Creek	FL	Comprehensive Analysis of Police Services
Delray Beach	FL	Comprehensive Analysis of Police Services
Delray Beach	FL	Comprehensive Analysis of Fire Services
Dunedin	FL	Police Consolidation Review
Hollywood	FL	Police Internal Affairs Review
Indian River Shores	FL	Public Safety Staffing Analysis
Indian River Shores	FL	Public Safety Study
Jacksonville Bch	FL	Police Chief Selection
Jupiter Island	FL	Public Safety Department Review
Jupiter	FL	Police and Fire
Hobe Sound	FL	Public Safety Consolidation
Kenneth City	FL	Comprehensive Analysis of Police Services
Miami Beach	FL	Comprehensive analysis of Fire Services
Naples	FL	Presentation
North Port	FL	Comprehensive Analysis of Police Services
Orange County	FL	Dispatch Center Staffing Study
Parkland	FL	City Safety & Security Review
Pasco County	FL	Sheriff's Budget Review
Land O' Lakes	FL	Comprehensive analysis of Fire Services
New Port Richey	FL	Sheriff Budget Analysis
Pompano Beach	FL	Comprehensive Analysis of Police Services
Venice	FL	Comprehensive Analysis of Fire Services
Alpharetta	GA	Comprehensive Analysis of Fire Services
Alpharetta	GA	Comprehensive Analysis of Police Services
Bulloch County	GA	Comprehensive Analysis of Fire Services
Camden County	GA	Police Consolidation Study
Camden County	GA	Comprehensive Analysis of Fire Services
Camden County	GA	Fire Consolidation Study
Kingsland	GA	Comprehensive Analysis of Fire Services
Kingsland	GA	Fire Consolidation St Marys
Woodbine	GA	Police Consolidation Study
Garden City	GA	Preliminary Analysis Public Safety Merger
Johns Creek	GA	Analysis of Fire Services
Kingsland	GA	Fire Consolidation Study

Roswell	GA	Comprehensive Analysis of Police Department
Roswell	GA	Police Chief Selection
Sandy Springs	GA	Comprehensive Analysis of Police Department
St. Marys	GA	Fire Consolidation Study
Ankeny	IA	Police Chief Selection
Boone	IA	Public Safety Consolidation
Boone	IA	Performance Measurement of Municipal
Hayden	ID	Comprehensive Analysis of Police Services
Jerome	ID	Analysis of Police Services
Algonquin	IL	Performance Measurement Analysis
Glenview	IL	Comprehensive Analysis of Police & Fire Services
Glenview	IL	Comprehensive Analysis of Police Services
Glenview	IL	Dispatch Operations Review
Highland	IL	Comprehensive Analysis of Fire Services
Highland Park	IL	Comprehensive Analysis of Fire Consolidation
Highwood	IL	Comprehensive Analysis of Fire Consolidation
Lake Bluff	IL	Analysis of Fire Consolidation
Lake Bluff	IL	Fire Data Review
Lake Forest	IL	Analysis of Fire Consolidation
Lake Zurich	IL	Comprehensive Analysis of fire services
Naperville	IL	Workload, Staffing & Schedule Design
Roseville	IL	Comprehensive Analysis of Police Services
Skokie	IL	Comprehensive Analysis of Police Services
St. Charles	IL	Police Staffing Review
Western Springs	IL	Comprehensive Analysis of Police Services
Indianapolis	IN	Police Workload & Deployment Services
Plainfield	IN	Comprehensive Analysis of Police Services
Topeka	KS	Preliminary review of Fire Department
Pikeville	KY	Comprehensive Analysis of Fire Services
Northborough	MA	Comprehensive Analysis of Police Services
Northborough	MA	Comprehensive Analysis of Fire Services
Cambridge	MD	Performance Measurement Study
Annapolis	MD	Comprehensive Analysis of Police Services
Ocean City	MD	Dispatch Operations Review
Rockville	MD	Comprehensive Analysis of Police Services
Lewiston	ME	Comprehensive Analysis of Fire Services
Ann Arbor	MI	Comprehensive Analysis of Fire Services
Auburn Hills	MI	Comprehensive Analysis of Fire Services
Auburn Hills	MI	Comprehensive Analysis of Police Services
Benton Harbor	MI	Public Safety Consolidation
Chesterfield	MI	Comprehensive Analysis of Police Services
Charlevoix	MI	EMS Study

Lansing	MI	Comprehensive Analysis of Police Services
Lansing	MI	Comprehensive Analysis of Fire Services
Delta Township	MI	Comprehensive Analysis of Fire Services
Delta Township	MI	Comprehensive Analysis of Police Services
Detroit Public Schools	MI	Police Department Review
Douglas	MI	Comprehensive Analysis of Police Services
Flint	MI	Comprehensive Analysis of Fire Services
Flint	MI	Comprehensive Analysis of Police Services
Green Lake Twp.	MI	Comprehensive Analysis of Fire Services
Grand Rapids	MI	Comprehensive Analysis of Police Services
Grand Rapids	MI	Comprehensive Analysis of Fire Services
Kingsley	MI	Comprehensive Analysis of Fire Services
Hamtramck	MI	Comprehensive Analysis of Police Services
Interlochen	MI	Comprehensive Analysis of Fire Services
Grand Traverse	MI	Comprehensive Analysis of Fire Services
Grosse Pointe Park	MI	Public Safety Consolidation
Grosse Pointe	MI	Public Safety Consolidation
Hamtramck	MI	Police Study
Grand Blanc	MI	Comprehensive Analysis of Fire Services
Grand Rapids	MI	Comprehensive Analysis of Police & Fire Services
Grand Rapids	MI	Analysis of Police Services Consolidation
Kentwood	MI	Analysis of Fire Services Consolidation
Flint	MI	Comprehensive Analysis of Police Services
Flint	MI	Comprehensive Analysis of Fire Services
Mott College	MI	Comprehensive Analysis of Police Services
Novi	MI	Comprehensive Analysis of Police Services
Novi	MI	Comprehensive analysis of Fire Services
Kalamazoo	MI	Police Workload / Contract for Services Analysis
Oshtemo Twp.	MI	Review of Sheriff's Office Contract Services
Ottawa County	MI	Sheriff's Office Staffing Study
Petoskey	MI	Public Safety Consolidation
Plymouth	MI	Fire Services Consolidation
Plymouth	MI	Fire Service Analysis
Plymouth	MI	Public Safety Department Report
Royal Oak	MI	Comprehensive Analysis of Police Services
Royal Oak	MI	Comprehensive Analysis of Fire Services
Saginaw	MI	Comprehensive Analysis of Police Services
Saginaw	MI	Comprehensive Analysis of Fire Services
Saginaw	MI	Public Safety Workload Analysis
So. Kalamazoo	MI	Fire Services Review
Vicksburg	MI	Financial Analysis of Fire Authority

Saint Joseph	MI	Public Safety Consolidation
Sturgis	MI	Public Safety Analysis
Troy	MI	Comprehensive Analysis of Police Services
Troy	MI	Review of Fire Administration and Inspections
Wyoming	MI	Comprehensive Analysis of Police Services 2012
Wyoming	MI	Comprehensive Analysis of Fire Services 2012
Wyoming	MI	Comprehensive Analysis of Police Services 2009
Wyoming	MI	Comprehensive Analysis of Fire Services 2009
Forest Lake	MN	Comprehensive Analysis of Police Services
Mankato	MN	Public Safety Study
Moorhead	MN	Comprehensive Analysis of Fire Services
North St. Paul	MN	Public Safety Strategic Plan
Saint Cloud	MN	Police Strategic Planning Review
Saint Cloud	MN	Comprehensive Analysis of Police Services
Stearns County	MN	Comprehensive Analysis of Sheriffs Office
Brentwood	MO	Comprehensive Analysis of Police Services
Hazelwood	MO	Fire / EMS Analysis
Osage Beach	MO	Comprehensive Analysis of Police Services
Saint Louis	MO	Comprehensive Analysis of Fire Services
Saint Louis	MO	Comprehensive Analysis of Police Services
Saint Louis	MO	Standard of Response / risk assessment
Bozeman	MT	Fire Protection Master Plan
Kalispell	MT	EMS Study
Bald Head Island	NC	Public Safety Staffing Review
Bald Head Island	NC	Public Safety Consolidation
Chapel Hill	NC	Comprehensive Analysis of Police Services
Cornelius	NC	Fire Consolidation Study
Davidson	NC	Fire Consolidation Study
Greenville	NC	Comprehensive Analysis of Fire Services
Hickory	NC	Comprehensive Analysis of Fire Services
Huntersville	NC	Comprehensive Analysis of Fire Services
Matthews	NC	Comprehensive Analysis of Police Services
Oxford	NC	Comprehensive Analysis of Fire Services
Oxford	NC	Comprehensive Analysis of Police Services
Rocky Mount	NC	AED Grant assistance
Rocky Mount	NC	Comprehensive Analysis of Police Services
Grand Island	NE	Comprehensive Analysis of Police Services
Grand Island	NE	Comprehensive Analysis of Fire Services
South Sioux City	NE	Fire Services Strategic Plan
Exeter	NH	Comprehensive Analysis of Fire Services
Exeter	NH	Comprehensive Analysis of Police Services
East Brunswick	NJ	EMS Study

Oradell	NJ	Comprehensive Analysis of Police Services
Paterson	NJ	Review of Police Services
South Orange	NJ	Comprehensive Analysis of Police Services
Trenton	NJ	Comprehensive Analysis of Fire Services
Westwood	NJ	Comprehensive Analysis of Police Services
Bernalillo	NM	Comprehensive Analysis of Fire Services
Las Cruces	NM	Comprehensive Analysis of Fire Services
Las Cruces	NM	Comprehensive Analysis of Police Services
Ruidoso	NM	Comprehensive Analysis of Police Services
Boulder City	NV	Police Organizational Study
Henderson	NV	Comprehensive Analysis of Police Services
Las Vegas	NV	Comprehensive Analysis of Fire Services
North Las Vegas	NV	Fire Workload Analysis
Reno	NV	Comprehensive Analysis of Fire Services
Briar Cliff Manor	NY	Analysis of police consolidation
Canandaigua	NY	Regional Fire Services Study
Garden City	NY	Comprehensive Analysis of Fire Services
Garden City	NY	Comprehensive Analysis of Police Services
Garden City	NY	Patrol Workload Analysis Update
Long Beach	NY	Comprehensive Analysis of Fire and EMS services
Oneonta	NY	Comprehensive Analysis of Fire and EMS services
Oneonta	NY	Fire Apparatus Review
Orchard Park	NY	Comprehensive Analysis of Police Services
Ossining	NY	Analysis of police consolidation
Ossining Town	NY	Analysis of police consolidation
Rye	NY	Police Chief Selection
Steuben County	NY	Comprehensive Analysis of EMS
Watertown	NY	Comprehensive Analysis of Fire Services
Cincinnati	OH	Police Dispatch Review
Dayton	OH	Police Internal Affairs Review
Huron	OH	Comprehensive Analysis of Police Services
Huron	OH	Comprehensive Analysis of Fire Services
Independence	OH	Comprehensive Analysis of Police Services
Independence	OH	Comprehensive Analysis of Fire Services
Sandusky	OH	Fire Study
Sandusky	OH	Police Study
Broken Arrow	OK	Comprehensive Analysis of Police Services
Broken Arrow	OK	Comprehensive Analysis of Fire Services
Edmond	OK	Comprehensive Analysis of Police Services
Jenks	OK	Comprehensive Analysis of Police Services
Jenks	OK	Comprehensive Analysis of Fire Services
Muskogee	OK	Comprehensive Analysis of Police Services

Tulsa	OK	Comprehensive Analysis of Fire Services
Bend	OR	Comprehensive Analysis of Police Services
Forest Grove	OR	Police Planning Study
Grants Pass	OR	Comprehensive Analysis of Fire Services
Grants Pass	OR	Comprehensive Analysis of Police Services
Grants Pass	OR	Public Safety Strategic Plan Development
Ontario	OR	Comprehensive Analysis of Police Services
Ontario	OR	Comprehensive Analysis of Fire Services
Medford	OR	Comprehensive Analysis of Fire Services
Cumru Twp.	PA	Comprehensive Analysis of Police Services
Cumru Twp.	PA	Police Chief Selection
Ephrata	PA	Comprehensive Analysis of Police Services
Farrell	PA	Comprehensive Analysis of Police Services
Manheim Twp.	PA	Comprehensive Analysis of Police Services
Tredyffrin Twp.	PA	Comprehensive Analysis of Police Services
Lower Windsor Twp.	PA	Comprehensive Analysis of Police Services
Upper Providence	PA	Comprehensive Analysis of Police Services
Wrightsville	PA	Comprehensive Analysis of Police Services
East Providence	RI	Comprehensive Analysis of Fire Services
East Providence	RI	Expert Witness Fire Issues
Beaufort	SC	Review of Fire Service Contract
Beaufort	SC	Comprehensive Analysis of Police Services
Beaufort	SC	Comprehensive Analysis of Fire Services
Walterboro	SC	Comprehensive Analysis of Public Safety Dept.
Rapid City	SD	Comprehensive Analysis of Fire Services
Germantown	TN	Comprehensive Analysis of Fire Services
Johnson City	TN	Comprehensive Analysis of Fire Services
Johnson City	TN	Comprehensive Analysis of Police Services
Smyrna	TN	Comprehensive Analysis of Police Services
Smyrna	TN	Comprehensive Analysis of Fire Services
Addison	TX	Comprehensive Analysis of Fire Services
Addison	TX	Comprehensive Analysis of Police Services
Baytown	TX	EMS Study
Belton	TX	Comprehensive Analysis of Police Services
Belton	TX	Comprehensive Analysis of Fire Services
Belton	TX	Police Chief Selection
Belton	TX	Fire Chief Selection
Bryan	TX	Comprehensive Analysis of Fire Services
Buda	TX	Comprehensive Analysis of Police Services
Cedar Park	TX	Comprehensive Analysis of Police Services
College Station	TX	Comprehensive Analysis of Fire Services
Conroe	TX	Fire Services Analysis and Standard of Response

Corinth	TX	Comprehensive Analysis of Fire Services
Frisco	TX	Comprehensive Analysis of Fire Services
Highland Village	TX	Fire Review
Hutto	TX	Comprehensive Analysis of Fire Services
Lucas	TX	Fire and EMS Analysis
Lufkin	TX	Comprehensive Analysis of Fire Services
New Braunfels	TX	Fire Study
New Braunfels	TX	Police Study
Prosper	TX	Comprehensive Analysis of Police Services
Round Rock	TX	Comprehensive Analysis of Fire Services
Sugar Land	TX	Comprehensive Analysis of Police Services
Sugar Land	TX	Fire Department Overtime Analysis
Sugarland	TX	Comprehensive Analysis of Fire Services
Victoria	TX	Comprehensive Analysis of Police Services
Washington City	UT	Comprehensive Public Safety Analysis
Hampton	VA	Police Chief Selection
Leesburg	VA	Comprehensive Analysis of Sheriff Services
Leesburg	VA	Comprehensive Analysis of Fire Services
Hampton	VA	Police Chief Selection
Loudon County	VA	Comprehensive Analysis of Fire Services
Loudon County	VA	Comprehensive Analysis of Sheriff's Services
Bonney Lake	WA	Comprehensive Analysis of Police Services
Lacey	WA	Comprehensive Analysis of Fire Services
Snoqualmie	WA	Police Workload & Deployment Analysis
Marysville	WA	Comprehensive Analysis of Police Services
Marysville	WA	Comprehensive Analysis of Police Services
Mill Creek	WA	Comprehensive Analysis of Police Services
Mill Creek	WA	Comprehensive Analysis of Fire Services
Spokane Valley	WA	Comprehensive Analysis of Police Services
Vancouver	WA	Comprehensive Analysis of Police Services
Vancouver	WA	Police Chief Selection
Dunn County	WI	Sheriff Office Study
Wauwatosa	WI	Comprehensive Analysis of Fire Services
Wauwatosa	WI	Comprehensive Analysis of Police Services
Casper	WY	Comprehensive Analysis of Police Services
Jackson	WY	Police Consolidation Review
Laramie	WY	Comprehensive Analysis of Police Services