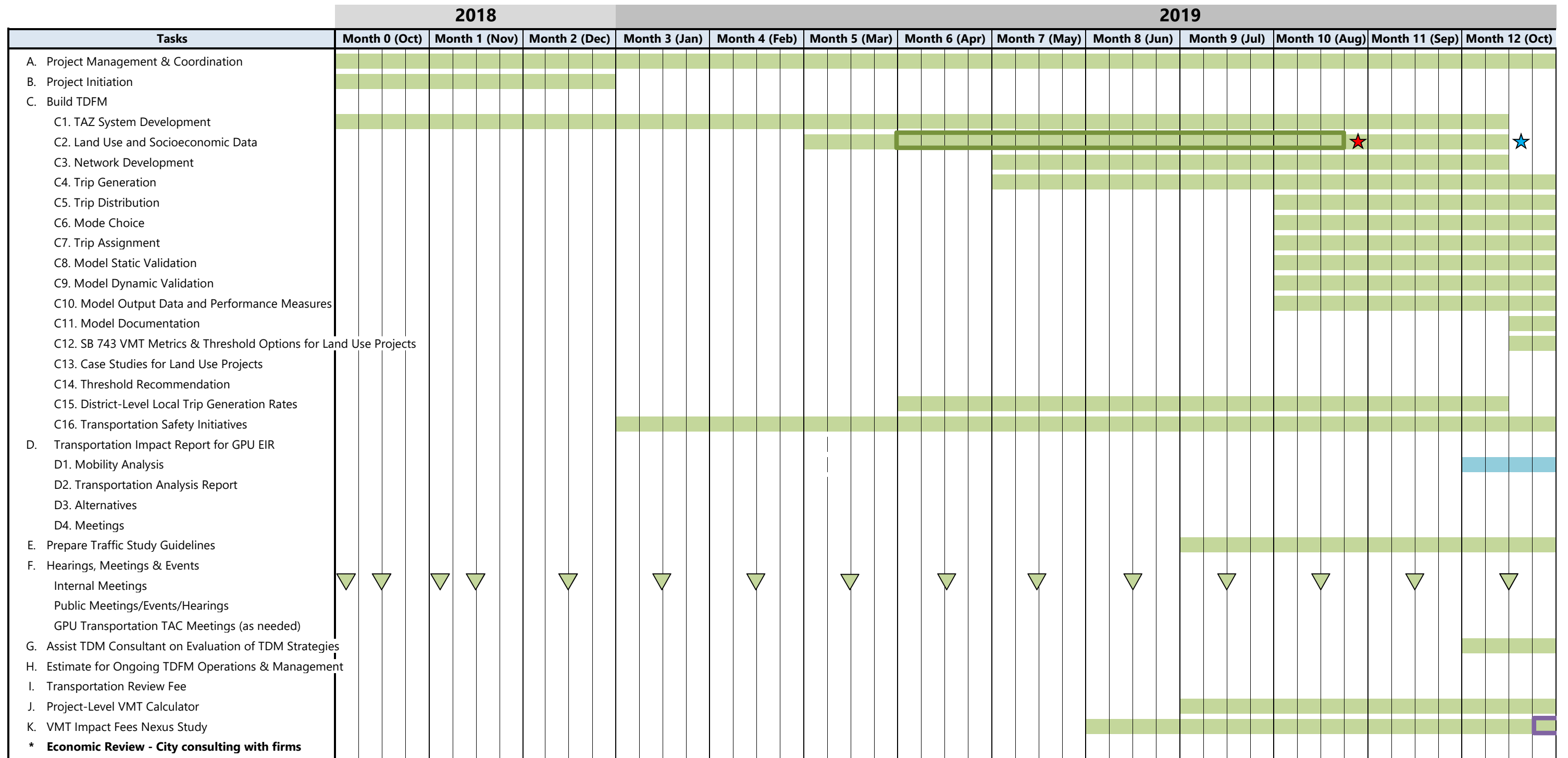


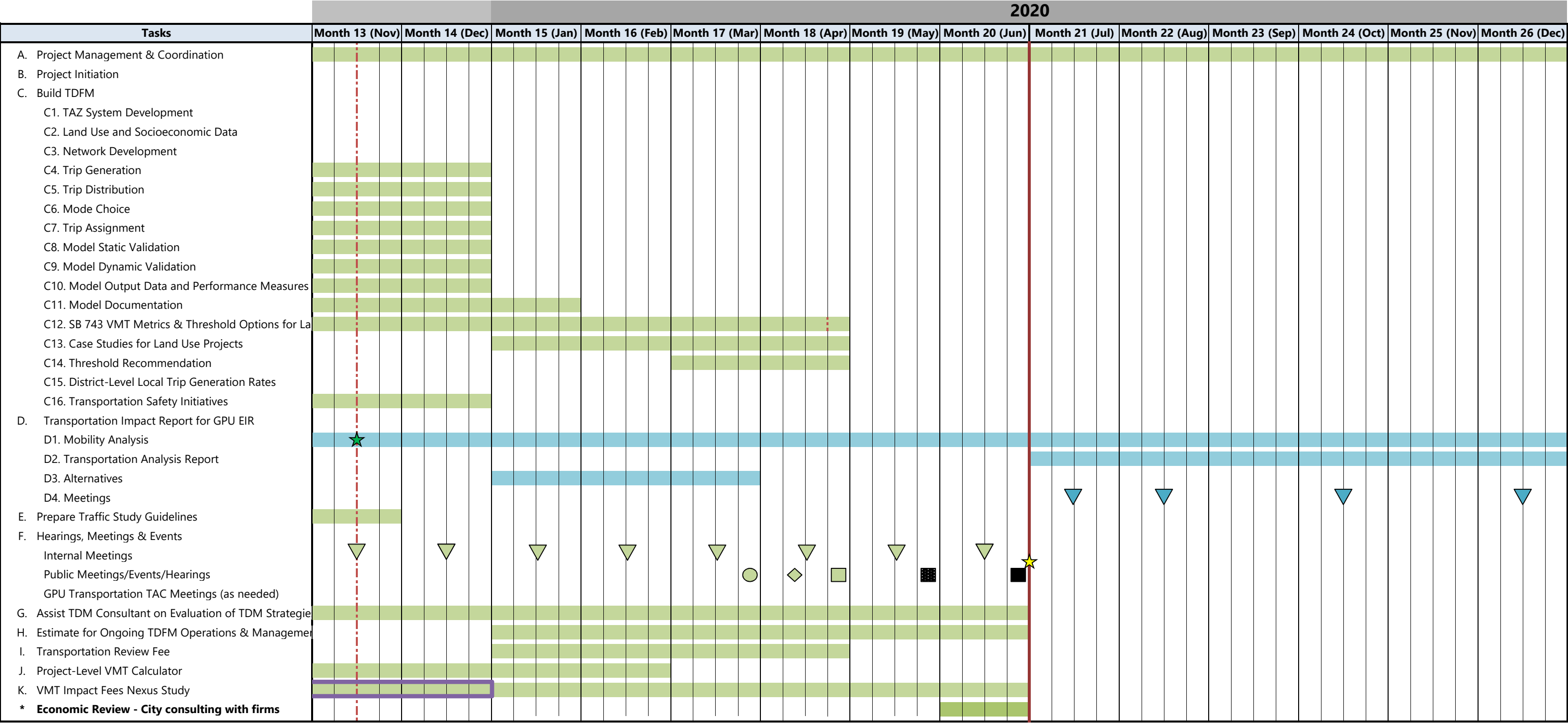
Culver City Travel Demand Forecast Model Schedule - Updated in October 2019



Key:

- ★ Due date for SCAG 2019SED from 2020RTP
- ★ Due date for all the model input data from the City
- ★ Due date for intersection 2019 base year data collection counts
- ★ 7/1/20 SB 743 deadline
- ▽ TDFM Monthly Project Conference Call/Meeting
- ▽ GPU Project Conference Call/Meeting (4)
- Community Meeting/Event
- ◇ City staff prepares briefing memo to Planning Commission/City Council
- Joint Planning Commission/City Council Meeting
- TDFM Adoption Planning Commission Hearing
- TDFM Adoption City Council Hearing
- Time spent negotiating to get 2019 SED from SCAG
- City and F&P develop CIP list

Culver City Travel Demand Forecast Model Schedule - Updated in October 2019



- Key:
- ★ Due date for SCAG 2019SED from 2020RTP
 - ★ Due date for all the model input data from the City
 - ★ Due date for intersection 2019 base year data collectio
 - ★ 7/1/20 SB 743 deadline
 - ▽ TDFM Monthly Project Conference Call/Meeting
 - ▽ GPU Project Conference Call/Meeting (4)