



SACHI A. HAMAI
Chief Executive Officer

County of Los Angeles CHIEF EXECUTIVE OFFICE

Kenneth Hahn Hall of Administration
500 West Temple Street, Room 713, Los Angeles, California 90012
(213) 974-1101
<http://ceo.lacounty.gov>

SENT VIA E-MAIL

May 3, 2019

To: City Managers/Chief Administrative Officers

Board of Supervisors
HILDA L. SOLIS
First District

MARK RIDLEY-THOMAS
Second District

SHEILA KUEHL
Third District

JANICE HAHN
Fourth District

KATHRYN BARGER
Fifth District

2020 CENSUS FUNDING ALLOCATIONS

On November 9, 2018, the California Complete Count Director informed counties that they could opt-in to an agreement with the State of California to conduct outreach related to the California Complete Count (CCC) 2020 Census. The State funding allocation for the County of Los Angeles to promote participation in the 2020 decennial census is \$9,393,090. The State "expect[s] that counties w[ill] collaborate with cities within their jurisdiction on outreach efforts" focused on geographic areas and demographic populations referred to as "hard-to-count" (HTC) or "least likely to respond" areas. Per the direction of the Board of Supervisors, on March 21, 2019, our Office executed the opt-in agreement with the State of California on behalf of the County.

The County intends to allocate funding to support "on the ground" outreach efforts in cities and unincorporated areas (UAs), focused on HTC areas under three (3) funding allocation agreements as follows:

Contractors for Cities & UAs Outreach	Funding Base	Operations	Administration	County Administration	Contractor Allocation (Ops & Admin)
City of Los Angeles	\$3,105,384	\$2,794,846	\$ 155,269	\$ 155,269	\$2,950,115
City of Long Beach	\$ 339,096	\$ 305,186	\$ 16,955	\$ 16,955	\$ 322,141
Administrative Community - Based Organization for Region 8 (ACBO)	\$3,103,051	\$2,792,745	\$ 155,153	\$ 155,153	\$2,947,898
Total	\$6,547,531	\$5,892,777	\$ 327,377	\$ 327,377	\$6,220,154

The City of Los Angeles, the County UAs, and the City of Long Beach comprise approximately two-thirds of the HTC block groups within Los Angeles County. Therefore, Los Angeles County decided to allocate direct funding to the City of Los Angeles and the City of Long Beach.

The State designated the California Community Foundation (CCF) as the Administrative Community-Based Organization (ACBO) for Los Angeles County. Additionally, the State's Strategic Plan requires partnership and coordination between State, counties, cities, CBOs, and others to avoid duplication of effort and to identify methodologies to address outreach gaps. As part of this designation, CCF will be responsible for coordinating funding to and outreach efforts of 65 cities and 45 UAs Countywide that have HTC block groups.

Census Regions

Based on the State requirements, cities and UAs will have an opportunity to participate in one of seven Regional Tables that will include CBOs and others to determine the best strategies to leverage funding and resources to achieve the highest self-response rate for the 2020 Census. Attachment I to this memo is a map of LA County Census Outreach Regions. Although the map reflects eight regions, only seven of the regions have HTC areas making the cities and UAs in those regions eligible for State funding. Participation by the County and Cities of Los Angeles and Long Beach at the Regional Tables will be essential to ensure a coordinated outreach and education effort.

Funding can be used for a broad range of activities, including but not limited to, support for CBOs and faith-based organizations, city department outreach efforts including 2020 Census events and promotional materials/banners/bus wraps, local media, and Census Action Kiosks (locations where the public can access a computer to complete the Census questionnaire). The three contracting entities, CCF and the cities of Los Angeles and Long Beach, will be required to meet all State and County contracting and monitoring requirements under their separate agreements.

“Adopt a Block Group”

Because State funding for cities and UAs is intended for “least likely to respond” or HTC areas, all cities and UAs will be required to identify and ensure that HTC block groups have been “adopted” Countywide. Due to the U.S. Census Bureau and the State of California using different variable characteristics to identify HTC block groups, the County determined that it would designate funding to cities based on the higher allocation of the two methodologies and included any city or UA that had HTC block groups based on either methodology. Attachment II to this memo provides the funding allocations for each

City Managers/Chief Administrative Officers
May 3, 2019
Page 3

city/UA eligible to receive funding and identifies those cities and UAs ineligible for funding (because they do not contain HTC areas). Attachment III identifies each mapped region's HTC areas using the U.S. Census Bureau's Low Response Score methodology. Attachment IV identifies each mapped region's HTC areas using the State of California's CA-HTC Index methodology. The maps in Attachments III and IV use color coding to distinguish HTC areas. The darker an area is shaded on the map, the more difficult it is to count. The areas shaded in red on the maps are considered the hardest to count.

There are 21 cities and 66 UAs that do not have any HTC block groups and therefore do not reflect a funding allocation. Nevertheless, these cities and UAs are encouraged to participate at a Regional Table to keep abreast of material developments regarding Census 2020 education and outreach efforts in their respective regions including toolkits and projects supported by the County and other entities. Furthermore, all 88 cities and 111 UAs will benefit from a regional broad-based outreach campaign, including outreach through regional programs delivered by County departments and other sectors.

If you have any questions, please contact Avianna Uribe at (213) 974-6837 or at auribe@ceo.lacounty.gov.

Sincerely,



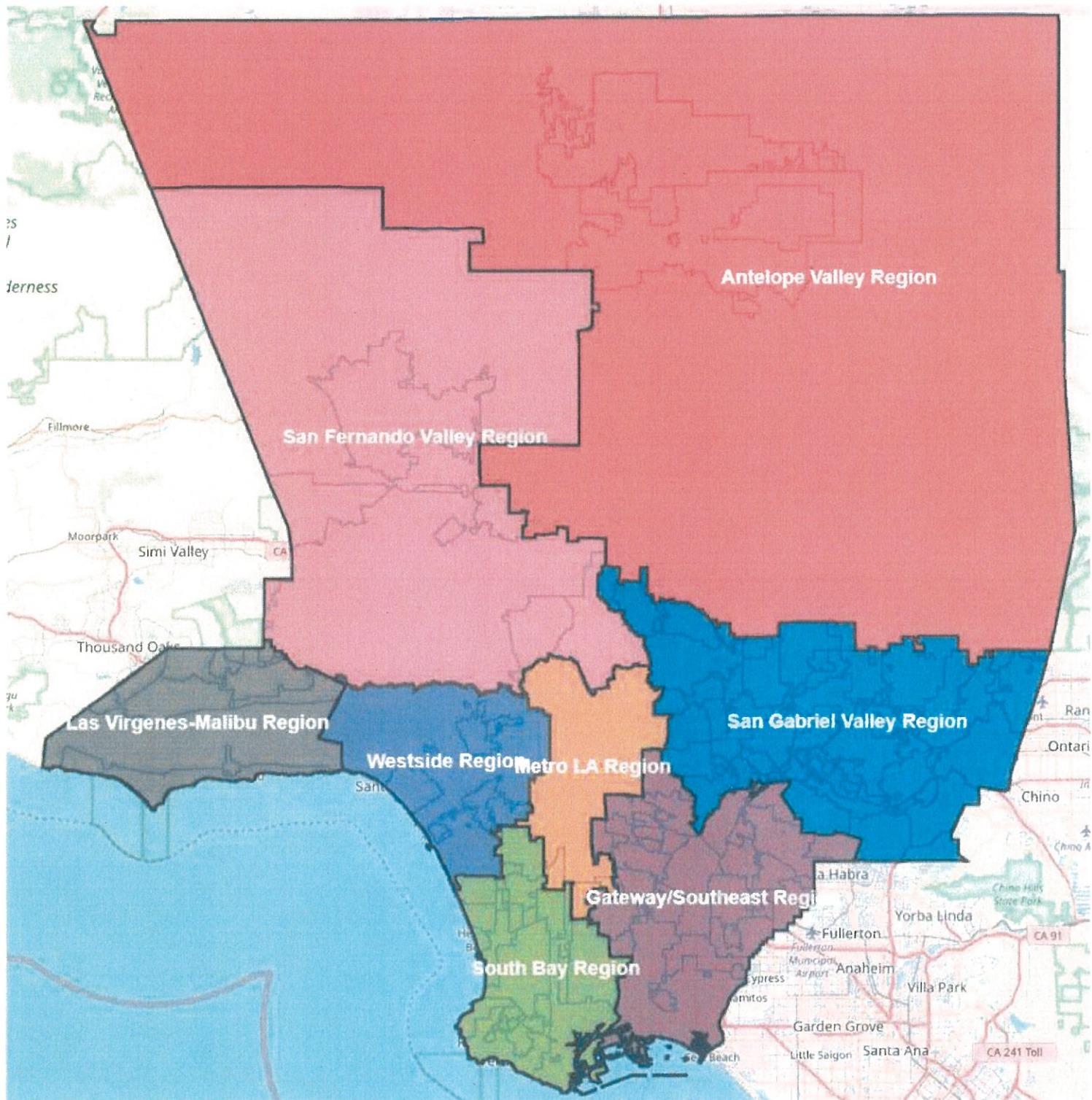
SACHI A. HAMAI
Chief Executive Officer

SAH:JJ:FD
AU:JT:ma

Attachments

c: Each Supervisor
Executive Office, Board of Supervisors
County Counsel
California Community Foundation
Advancement Project – Census Policy Advocacy Network
California Complete Count, Director
Census Liaisons

L.A. County Census Outreach by Regions



City and Unincorporated Area Allocations by Outreach Regions

Gateway COG Region (Southeast)

Sup District	City/Unincorporated Area	City/UA Contractor Funding Base (Greater calculation of LRS and CA-HTC Index methodologies.) *	Contractor Operations Allocation	Contractor Admin **	City/UA Allocation (Contractor Operations + Admin)	County Admin **	City/UA Allocation Based on LRS	City/UA Allocation Based on CA-HTC Index
4	Avalon	\$ 10,939	\$ 9,845	\$ 547	\$ 10,392	\$ 547	\$ 10,392	\$ 5,684
1	Bell	\$ 53,851	\$ 48,465	\$ 2,693	\$ 51,158	\$ 2,693	\$ 45,723	\$ 51,158
1	Bell Gardens	\$ 59,834	\$ 53,850	\$ 2,992	\$ 56,842	\$ 2,992	\$ 51,958	\$ 56,842
4	Bellflower	\$ 53,851	\$ 48,465	\$ 2,693	\$ 51,158	\$ 2,693	\$ 49,880	\$ 51,158
1	Commerce	\$ 19,689	\$ 17,721	\$ 984	\$ 18,705	\$ 984	\$ 18,705	\$ 11,368
2	Compton	\$ 150,952	\$ 135,858	\$ 7,547	\$ 143,405	\$ 7,547	\$ 143,405	\$ 102,316
1	Cudahy	\$ 35,900	\$ 32,310	\$ 1,795	\$ 34,105	\$ 1,795	\$ 24,940	\$ 34,105
4	Downey	\$ 63,444	\$ 57,100	\$ 3,172	\$ 60,272	\$ 3,172	\$ 60,272	\$ 28,421
4	Hawaiian Gardens	\$ 17,950	\$ 16,156	\$ 897	\$ 17,053	\$ 897	\$ 12,470	\$ 17,053
1	Huntington Park	\$ 89,696	\$ 80,726	\$ 4,485	\$ 85,211	\$ 4,485	\$ 85,211	\$ 73,895
4	Lakewood	\$ 13,126	\$ 11,814	\$ 656	\$ 12,470	\$ 656	\$ 12,470	\$ 5,684
2	Lynwood	\$ 83,767	\$ 75,391	\$ 4,188	\$ 79,579	\$ 4,188	\$ 78,976	\$ 79,579
1	Maywood	\$ 41,884	\$ 37,696	\$ 2,094	\$ 39,790	\$ 2,094	\$ 33,253	\$ 39,790
4	Norwalk	\$ 32,816	\$ 29,534	\$ 1,641	\$ 31,175	\$ 1,641	\$ 31,175	\$ 28,421
4	Paramount	\$ 65,817	\$ 59,235	\$ 3,291	\$ 62,526	\$ 3,291	\$ 54,037	\$ 62,526
1	Pico Rivera	\$ 30,628	\$ 27,566	\$ 1,531	\$ 29,097	\$ 1,531	\$ 29,097	\$ 17,053
4	Santa Fe Springs	\$ 15,314	\$ 13,782	\$ 766	\$ 14,548	\$ 766	\$ 14,548	\$ 5,684
4	Signal Hill	\$ 4,375	\$ 3,937	\$ 219	\$ 4,156	\$ 219	\$ 4,156	\$ -
1	South Gate	\$ 107,701	\$ 96,931	\$ 5,385	\$ 102,316	\$ 5,385	\$ 93,525	\$ 102,316
1	Vernon	\$ 4,375	\$ 3,937	\$ 219	\$ 4,156	\$ 219	\$ 4,156	\$ -
4	Whittier	\$ 41,567	\$ 37,409	\$ 2,079	\$ 39,488	\$ 2,079	\$ 39,488	\$ 22,737
4	Unincorporated - Cerritos	\$ 539	\$ 485	\$ 27	\$ 512	\$ 27	\$ -	\$ 512
1	Unincorporated - East Los Angeles	\$ 175,359	\$ 157,823	\$ 8,768	\$ 166,591	\$ 8,768	\$ 166,591	\$ 158,227
2	Unincorporated - East Rancho Dominguez	\$ 34,639	\$ 31,175	\$ 1,732	\$ 32,907	\$ 1,732	\$ 32,907	\$ 24,959
2	Unincorporated - Florence-Firestone	\$ 90,927	\$ 81,835	\$ 4,546	\$ 86,381	\$ 4,546	\$ 86,381	\$ 82,781
4	Unincorporated - Santa Catalina Island	\$ 2,165	\$ 1,949	\$ 108	\$ 2,057	\$ 108	\$ 2,057	\$ 1,023
4	Unincorporated - South Whittier	\$ 28,144	\$ 25,330	\$ 1,407	\$ 26,737	\$ 1,407	\$ 26,737	\$ 13,020
1	Unincorporated - Walnut Park	\$ 12,990	\$ 11,690	\$ 650	\$ 12,340	\$ 650	\$ 12,340	\$ 10,916
4	Unincorporated - West Whittier/Los Nietos	\$ 12,990	\$ 11,690	\$ 650	\$ 12,340	\$ 650	\$ 12,340	\$ 4,150
		\$ 1,355,229	\$ 1,219,705	\$ 67,762	\$ 1,287,467	\$ 67,762		

Cities and Unincorporated Areas in the Region that do not have hard-to-survey areas based on either LRS or CA-HTC Index:

4	Artesia
4	Cerritos
4	La Habra Heights
4	La Mirada
	Unincorporated - East La Mirada
	Unincorporated - East Whittier
	Unincorporated - La Habra Heights
	Unincorporated - Lakewood
	Unincorporated - Long Beach
	Unincorporated - North Whittier
	Unincorporated - Rancho Dominguez
	Unincorporated - Rosewood
	Unincorporated - San Clemente Island
	Unincorporated - Sunrise Village
	Unincorporated - Whittier

* The funding base for outreach in each hard-to-survey city or unincorporated area is the greater amount of the two methodologies used (Census Bureau's Low Response Score (LRS) vs. State's CA-HTC Index) since each methodology includes slightly different variables.

** The County will use 5% of the City/UA Funding Base to administer the program and the Contractor would be able to use 5% of the City/UA Funding Base for administration. The amounts in the highlighted City/UA Allocation column include the allowed Contractor Admin.

City and Unincorporated Area Allocations by Outreach Regions

San Gabriel Valley COG Region

Sup District	City/Unincorporated Area	City/UA Contractor Funding Base (Greater calculation of LRS and CA-HTC Index methodologies.) *	Contractor Operations Allocation	Contractor Admin **	City/UA Allocation (Contractor Operations + Admin)	County Admin **	City/UA Allocation Based on LRS	City/UA Allocation Based on CA-HTC Index
5	Alhambra	\$ 35,900	\$ 32,310	\$ 1,795	\$ 34,105	\$ 1,795	\$ 27,018	\$ 34,105
5	Arcadia	\$ 5,983	\$ 5,385	\$ 299	\$ 5,684	\$ 299	\$ -	\$ 5,684
1	Azusa	\$ 32,816	\$ 29,534	\$ 1,641	\$ 31,175	\$ 1,641	\$ 31,175	\$ 11,368
1	Baldwin Park	\$ 48,130	\$ 43,316	\$ 2,407	\$ 45,723	\$ 2,407	\$ 45,723	\$ 34,105
1	Claremont	\$ 6,563	\$ 5,907	\$ 328	\$ 6,235	\$ 328	\$ 6,235	\$ -
5	Covina	\$ 15,314	\$ 13,782	\$ 766	\$ 14,548	\$ 766	\$ 14,548	\$ 11,368
1	El Monte	\$ 137,618	\$ 123,856	\$ 6,881	\$ 130,737	\$ 6,881	\$ 99,760	\$ 130,737
5	Glendora	\$ 8,751	\$ 7,875	\$ 438	\$ 8,313	\$ 438	\$ 8,313	\$ -
1	Industry	\$ 8,751	\$ 7,875	\$ 438	\$ 8,313	\$ 438	\$ 8,313	\$ -
1	Inwindale	\$ 4,375	\$ 3,937	\$ 219	\$ 4,156	\$ 219	\$ 4,156	\$ -
1	La Puente	\$ 26,253	\$ 23,627	\$ 1,313	\$ 24,940	\$ 1,313	\$ 24,940	\$ 11,368
5	La Verne	\$ 2,188	\$ 1,970	\$ 109	\$ 2,079	\$ 109	\$ 2,079	\$ -
5	Monrovia	\$ 19,689	\$ 17,721	\$ 984	\$ 18,705	\$ 984	\$ 18,705	\$ -
1	Montebello	\$ 50,317	\$ 45,285	\$ 2,516	\$ 47,801	\$ 2,516	\$ 47,801	\$ 45,474
1	Monterey Park	\$ 23,934	\$ 21,540	\$ 1,197	\$ 22,737	\$ 1,197	\$ 10,392	\$ 22,737
5	Pasadena	\$ 77,784	\$ 70,006	\$ 3,889	\$ 73,895	\$ 3,889	\$ 64,428	\$ 73,895
1	Pomona	\$ 96,259	\$ 86,633	\$ 4,813	\$ 91,446	\$ 4,813	\$ 91,446	\$ 90,948
1	Rosemead	\$ 29,917	\$ 26,925	\$ 1,496	\$ 28,421	\$ 1,496	\$ 14,548	\$ 28,421
5	San Dimas	\$ 2,188	\$ 1,970	\$ 109	\$ 2,079	\$ 109	\$ 2,079	\$ -
5	San Gabriel	\$ 19,689	\$ 17,721	\$ 984	\$ 18,705	\$ 984	\$ 18,705	\$ 11,368
1	South El Monte	\$ 26,253	\$ 23,627	\$ 1,313	\$ 24,940	\$ 1,313	\$ 24,940	\$ 17,053
5	South Pasadena	\$ 2,188	\$ 1,970	\$ 109	\$ 2,079	\$ 109	\$ 2,079	\$ -
5	Temple City	\$ 2,188	\$ 1,970	\$ 109	\$ 2,079	\$ 109	\$ 2,079	\$ -
1	Walnut	\$ 2,188	\$ 1,970	\$ 109	\$ 2,079	\$ 109	\$ 2,079	\$ -
1	West Covina	\$ 24,065	\$ 21,659	\$ 1,203	\$ 22,862	\$ 1,203	\$ 22,862	\$ 17,053
5	Unincorporated - Altadena	\$ 6,495	\$ 5,845	\$ 325	\$ 6,170	\$ 325	\$ 6,170	\$ -
1	Unincorporated - Avocado Heights	\$ 4,369	\$ 3,933	\$ 218	\$ 4,151	\$ 218	\$ 4,113	\$ 4,151
1	Unincorporated - Azusa	\$ 12,989	\$ 11,691	\$ 649	\$ 12,340	\$ 649	\$ 12,340	\$ 8,358
1	Unincorporated - Bassett	\$ 8,660	\$ 7,794	\$ 433	\$ 8,227	\$ 433	\$ 8,227	\$ 1,535
5,1	Unincorporated - Covina	\$ 4,330	\$ 3,896	\$ 217	\$ 4,113	\$ 217	\$ 4,113	\$ -
5	Unincorporated - Covina (Charter Oak)	\$ 2,165	\$ 1,949	\$ 108	\$ 2,057	\$ 108	\$ 2,057	\$ -
5	Unincorporated - Duarte	\$ 2,165	\$ 1,949	\$ 108	\$ 2,057	\$ 108	\$ 2,057	\$ -
1	Unincorporated - El Monte	\$ 2,165	\$ 1,949	\$ 108	\$ 2,057	\$ 108	\$ 2,057	\$ 512
	Unincorporated - Northeast San Gabriel	\$ 2,165	\$ 1,949	\$ 108	\$ 2,057	\$ 108	\$ 2,057	\$ 1,535
5	Unincorporated - Pomona	\$ 4,330	\$ 3,896	\$ 217	\$ 4,113	\$ 217	\$ 4,113	\$ -
4	Unincorporated - Rowland Heights	\$ 19,750	\$ 17,774	\$ 988	\$ 18,762	\$ 988	\$ 6,170	\$ 18,762
1	Unincorporated - San Jose Hills	\$ 16,458	\$ 14,812	\$ 823	\$ 15,635	\$ 823	\$ 14,397	\$ 15,635
1	Unincorporated - South El Monte	\$ 6,495	\$ 5,845	\$ 325	\$ 6,170	\$ 325	\$ 6,170	\$ 2,615
1	Unincorporated - South San Gabriel	\$ 6,583	\$ 5,925	\$ 329	\$ 6,254	\$ 329	\$ -	\$ 6,254
1	Unincorporated - Valinda	\$ 2,165	\$ 1,949	\$ 108	\$ 2,057	\$ 108	\$ 2,057	\$ 1,535
1	Unincorporated - West Puente Valley	\$ 4,330	\$ 3,896	\$ 217	\$ 4,113	\$ 217	\$ 4,113	\$ -
1	Unincorporated - Whittier Narrows	\$ 2,165	\$ 1,949	\$ 108	\$ 2,057	\$ 108	\$ 2,057	\$ 1,023
		\$ 817,080	\$ 735,372	\$ 40,854	\$ 776,226	\$ 40,854		

Cities and Unincorporated Areas in the Region that do not have hard-to-survey areas based on either LRS or CA-HTC Index:

5	Bradbury
4	Diamond Bar
5	Duarte
5	La Cañada Flintridge
5	San Marino
5	Sierra Madre
	Unincorporated - Arcadia
	Unincorporated - Bradbury
	Unincorporated - Claremont
	Unincorporated - East Covina
	Unincorporated - East Pasadena
	Unincorporated - Glendora
	Unincorporated - Hacienda Heights
	Unincorporated - La Crescenta-Montrose
	Unincorporated - La Verne
	Unincorporated - Monrovia
	Unincorporated - San Pasqual

* The funding base for outreach in each hard-to-survey city or unincorporated area is the greater amount of the two methodologies used (Census Bureau's Low Response Score (LRS) vs. State's CA-HTC Index) since each methodology includes slightly different variables.

** The County will use 5% of the City/UA Funding Base to administer the program and the Contractor would be able to use 5% of the City/UA Funding Base for administration. The amounts in the highlighted City/UA Allocation column include the allowed Contractor Admin.

City and Unincorporated Area Allocations by Outreach Regions
South Bay COG Region

Sup District	City/Unincorporated Area	City/UA Contractor Funding Base (Greater calculation of LRS and CA-HTC Index methodologies.) *	Contractor Operations Allocation	Contractor Admin **	City/UA Allocation (Contractor Operations + Admin)	County Admin **	City/UA Allocation Based on LRS	City/UA Allocation Based on CA-HTC Index
2	Carson	\$ 13,126	\$ 11,814	\$ 656	\$ 12,470	\$ 656	\$ 12,470	\$ 5,684
4	El Segundo	\$ 4,375	\$ 3,939	\$ 218	\$ 4,157	\$ 218	\$ 4,157	\$ -
2	Gardena	\$ 35,900	\$ 32,310	\$ 1,795	\$ 34,105	\$ 1,795	\$ 27,018	\$ 34,105
2	Hawthorne	\$ 96,259	\$ 86,633	\$ 4,813	\$ 91,446	\$ 4,813	\$ 91,446	\$ 90,948
2	Inglewood	\$ 113,761	\$ 102,385	\$ 5,688	\$ 108,073	\$ 5,688	\$ 108,073	\$ 85,263
2	Lawndale	\$ 37,191	\$ 33,473	\$ 1,859	\$ 35,332	\$ 1,859	\$ 35,332	\$ 5,684
4	Lomita	\$ 2,188	\$ 1,968	\$ 110	\$ 2,078	\$ 110	\$ 2,078	\$ -
4	Redondo Beach	\$ 5,983	\$ 5,385	\$ 299	\$ 5,684	\$ 299	\$ -	\$ 5,684
4	Torrance	\$ 8,751	\$ 7,875	\$ 438	\$ 8,313	\$ 438	\$ 8,313	\$ 5,684
2	Unincorporated - El Camino Village	\$ 6,495	\$ 5,845	\$ 325	\$ 6,170	\$ 325	\$ 6,170	\$ 5,742
4	Unincorporated - Harbor Gateway	\$ 2,165	\$ 1,949	\$ 108	\$ 2,057	\$ 108	\$ 2,057	\$ -
2	Unincorporated - Hawthorne	\$ 9,336	\$ 8,402	\$ 467	\$ 8,869	\$ 467	\$ 4,113	\$ 8,869
2	Unincorporated - Lennox	\$ 32,856	\$ 29,570	\$ 1,643	\$ 31,213	\$ 1,643	\$ 30,850	\$ 31,213
2	Unincorporated - West Carson	\$ 4,330	\$ 3,896	\$ 217	\$ 4,113	\$ 217	\$ 4,113	\$ 3,127
		\$ 372,716	\$ 335,444	\$ 18,636	\$ 354,080	\$ 18,636		

Cities and Unincorporated Areas in the Region that do not have hard-to-survey areas based on either LRS or CA-HTC Index:

4	Hermosa Beach
4	Manhattan Beach
4	Palos Verdes Estates
4	Rancho Palos Verdes
4	Rolling Hills
4	Rolling Hills Estates
	Unincorporated - Del Aire
	Unincorporated - La Rambla
	Unincorporated - Palos Verdes Peninsula
	Unincorporated - Westfield/Academy Hills
	Unincorporated - Wiseburn

* The funding base for outreach in each hard-to-survey city or unincorporated area is the greater amount of the two methodologies used (Census Bureau's Low Response Score (LRS) vs. State's CA-HTC Index) since each methodology includes slightly different variables.

** The County will use 5% of the City/UA Funding Base to administer the program and the Contractor would be able to use 5% of the City/UA Funding Base for administration. The amounts in the highlighted City/UA Allocation column include the allowed Contractor Admin.

**City and Unincorporated Area Allocations by Outreach Regions
San Fernando Valley COG Region**

Sup District	City/Unincorporated Area	City/UA Contractor Funding Base (Greater calculation of LRS and CA-HTC Index methodologies.) *	Contractor Operations Allocation	Contractor Admin **	City/UA Allocation (Contractor Operations + Admin)	County Admin **	City/UA Allocation Based on LRS	City/UA Allocation Based on CA-HTC Index
5	Burbank	\$ 35,900	\$ 32,310	\$ 1,795	\$ 34,105	\$ 1,795	\$ 16,627	\$ 34,105
5	Glendale	\$ 155,568	\$ 140,010	\$ 7,779	\$ 147,789	\$ 7,779	\$ 20,783	\$ 147,789
3	San Fernando	\$ 28,440	\$ 25,596	\$ 1,422	\$ 27,018	\$ 1,422	\$ 27,018	\$ 17,053
5	Santa Clarita	\$ 37,191	\$ 33,471	\$ 1,860	\$ 35,331	\$ 1,860	\$ 35,331	\$ 28,421
5	Unincorporated - Canyon Country	\$ 2,165	\$ 1,949	\$ 108	\$ 2,057	\$ 108	\$ 2,057	
5	Unincorporated - Castaic	\$ 2,165	\$ 1,949	\$ 108	\$ 2,057	\$ 108	\$ 2,057	
		\$ 261,429	\$ 235,285	\$ 13,072	\$ 248,357	\$ 13,072		

Cities and Unincorporated Areas in the Region that do not have hard-to-survey areas based on either LRS or CA-HTC Index:

Unincorporated - Agua Dulce
Unincorporated - Bouquet Canyon
Unincorporated - Kagel/Lopez Canyons
Unincorporated - Lake Manor
Unincorporated - Newhall
Unincorporated - Placerita Canyon
Unincorporated - San Francisquito Canyon/Bouquet Canyon
Unincorporated - Saugus
Unincorporated - Saugus/Canyon Country
Unincorporated - Stevenson Ranch
Unincorporated - Twin Lakes/Oat Mountain
Unincorporated - Val Verde
Unincorporated - Valencia
Unincorporated - West Chatsworth
Unincorporated - Westhills

* The funding base for outreach in each hard-to-survey city or unincorporated area is the greater amount of the two methodologies used (Census Bureau's Low Response Score (LRS) vs. State's CA-HTC Index) since each methodology includes slightly different variables.

** The County will use 5% of the City/UA Funding Base to administer the program and the Contractor would be able to use 5% of the City/UA Funding Base for administration. The amounts in the highlighted City/UA Allocation column include the allowed Contractor Admin.

City and Unincorporated Area Allocations by Outreach Regions
Antelope Valley Region

Sup District	City/Unincorporated Area	City/UA Contractor Funding Base (Greater calculation of LRS and CA-HTC Index methodologies.) *	Contractor Operations Allocation	Contractor Admin **	City/UA Allocation (Contractor Operations + Admin)	County Admin **	City/UA Allocation Based on LRS	City/UA Allocation Based on CA-HTC Index
5	Lancaster	\$ 59,068	\$ 53,162	\$ 2,953	\$ 56,115	\$ 2,953	\$ 56,115	\$ 39,790
5	Palmdale	\$ 48,130	\$ 43,316	\$ 2,407	\$ 45,723	\$ 2,407	\$ 45,723	\$ 39,790
5	Unincorporated - Hi Vista	\$ 2,165	\$ 1,949	\$ 108	\$ 2,057	\$ 108	\$ 2,057	\$ 1,023
5	Unincorporated - North Lancaster	\$ 539	\$ 485	\$ 27	\$ 512	\$ 27	\$ -	\$ 512
5	Unincorporated - Palmdale	\$ 6,495	\$ 5,845	\$ 325	\$ 6,170	\$ 325	\$ 6,170	\$ 3,127
5	Unincorporated - South Antelope Valley	\$ 2,165	\$ 1,949	\$ 108	\$ 2,057	\$ 108	\$ 2,057	\$ -
5	Unincorporated - Sun Village	\$ 7,122	\$ 6,410	\$ 356	\$ 6,766	\$ 356	\$ 2,057	\$ 6,766
		\$ 125,684	\$ 113,116	\$ 6,284	\$ 119,400	\$ 6,284		

Cities and Unincorporated Areas in the Region that do not have hard-to-survey areas based on either LRS or CA-HTC Index:

Unincorporated - Acton
Unincorporated - Anaverde
Unincorporated - Angeles National Forest
Unincorporated - Del Sur
Unincorporated - Desert View Highlands
Unincorporated - Elizabeth Lake
Unincorporated - Lake Hughes
Unincorporated - Lake Los Angeles
Unincorporated - Leona Valley
Unincorporated - Littlerock
Unincorporated - Littlerock/Juniper Hills
Unincorporated - Littlerock/Pearblossom
Unincorporated - Llano
Unincorporated - Pearblossom/Llano
Unincorporated - Quartz Hill
Unincorporated - Roosevelt
Unincorporated - Southeast Antelope Valley
Unincorporated - West Antelope Valley
Unincorporated - White Fence Farms

* The funding base for outreach in each hard-to-survey city or unincorporated area is the greater amount of the two methodologies used (Census Bureau's Low Response Score (LRS) vs. State's CA-HTC Index) since each methodology includes slightly different variables.

** The County will use 5% of the City/UA Funding Base to administer the program and the Contractor would be able to use 5% of the City/UA Funding Base for administration. The amounts in the highlighted City/UA Allocation column include the allowed Contractor Admin.

City and Unincorporated Area Allocations by Outreach Regions
Metro LA Region

Sup District	Unincorporated Area	City/UA Contractor Funding Base (Greater calculation of LRS and CA-HTC Index methodologies.) *	Contractor Operations Allocation	Contractor Admin **	City/UA Allocation (Contractor Operations + Admin)	County Admin **		City/UA Allocation Based on LRS	City/UA Allocation Based on CA-HTC Index
2	Unincorporated - Athens Village	\$ 6,495	\$ 5,845	\$ 325	\$ 6,170	\$ 325		\$ 6,170	\$ 5,231
2	Unincorporated - Athens-Westmont	\$ 45,463	\$ 40,917	\$ 2,273	\$ 43,190	\$ 2,273		\$ 43,190	\$ 40,594
2	Unincorporated - Rosewood/West Rancho Dominguez	\$ 6,495	\$ 5,845	\$ 325	\$ 6,170	\$ 325		\$ 6,170	\$ -
2	Unincorporated - West Rancho Dominguez	\$ 2,165	\$ 1,949	\$ 108	\$ 2,057	\$ 108		\$ 2,057	\$ -
2	Unincorporated - Willowbrook	\$ 47,628	\$ 42,866	\$ 2,381	\$ 45,247	\$ 2,381		\$ 45,247	\$ 33,317
		\$ 108,246	\$ 97,422	\$ 5,412	\$ 102,834	\$ 5,412			

Cities and Unincorporated Areas in the Region that do not have hard-to-survey areas based on either LRS or CA-HTC Index:

Unincorporated - Rosewood/East Gardena
--

* The funding base for outreach in each hard-to-survey city or unincorporated area is the greater amount of the two methodologies used (Census Bureau's Low Response Score (LRS) vs. State's CA-HTC Index) since each methodology includes slightly different variables.

** The County will use 5% of the City/UA Funding Base to administer the program and the Contractor would be able to use 5% of the City/UA Funding Base for administration. The amounts in the highlighted City/UA Allocation column include the allowed Contractor Admin.

City and Unincorporated Area Allocations by Outreach Regions
Westside Cities COG Region

Sup District	City/Unincorporated Area	City/UA Contractor Funding Base (Greater calculation of LRS and CA-HTC Index methodologies.) *	Contractor Operations Allocation	Contractor Admin **	City/UA Allocation (Contractor Operations + Admin)	County Admin **	City/UA Allocation Based on LRS	City/UA Allocation Based on CA-HTC Index
3	Beverly Hills	\$ 5,983	\$ 5,385	\$ 299	\$ 5,684	\$ 299	\$ -	\$ 5,684
2	Culver City	\$ 4,375	\$ 3,939	\$ 218	\$ 4,157	\$ 218	\$ 4,157	\$ -
3	Santa Monica	\$ 23,934	\$ 21,540	\$ 1,197	\$ 22,737	\$ 1,197	\$ 20,783	\$ 22,737
3	West Hollywood	\$ 11,967	\$ 10,769	\$ 599	\$ 11,368	\$ 599	\$ -	\$ 11,368
4	Unincorporated - Marina del Rey	\$ 13,166	\$ 11,850	\$ 658	\$ 12,508	\$ 658	\$ 2,057	\$ 12,508
2	Unincorporated - View Park/Windsor Hills	\$ 1,077	\$ 969	\$ 54	\$ 1,023	\$ 54	\$ -	\$ 1,023
3	Unincorporated - West LA	\$ 2,165	\$ 1,949	\$ 108	\$ 2,057	\$ 108	\$ 2,057	\$ 1,023
		\$ 62,667	\$ 56,401	\$ 3,133	\$ 59,534	\$ 3,133		

Cities and Unincorporated Areas in the Region that do not have hard-to-survey areas based on either LRS or CA-HTC Index:

	Unincorporated - Del Rey
	Unincorporated - Franklin Canyon
	Unincorporated - Ladera Heights

* The funding base for outreach in each hard-to-survey city or unincorporated area is the greater amount of the two methodologies used (Census Bureau's Low Response Score (LRS) vs. State's CA-HTC Index) since each methodology includes slightly different variables.

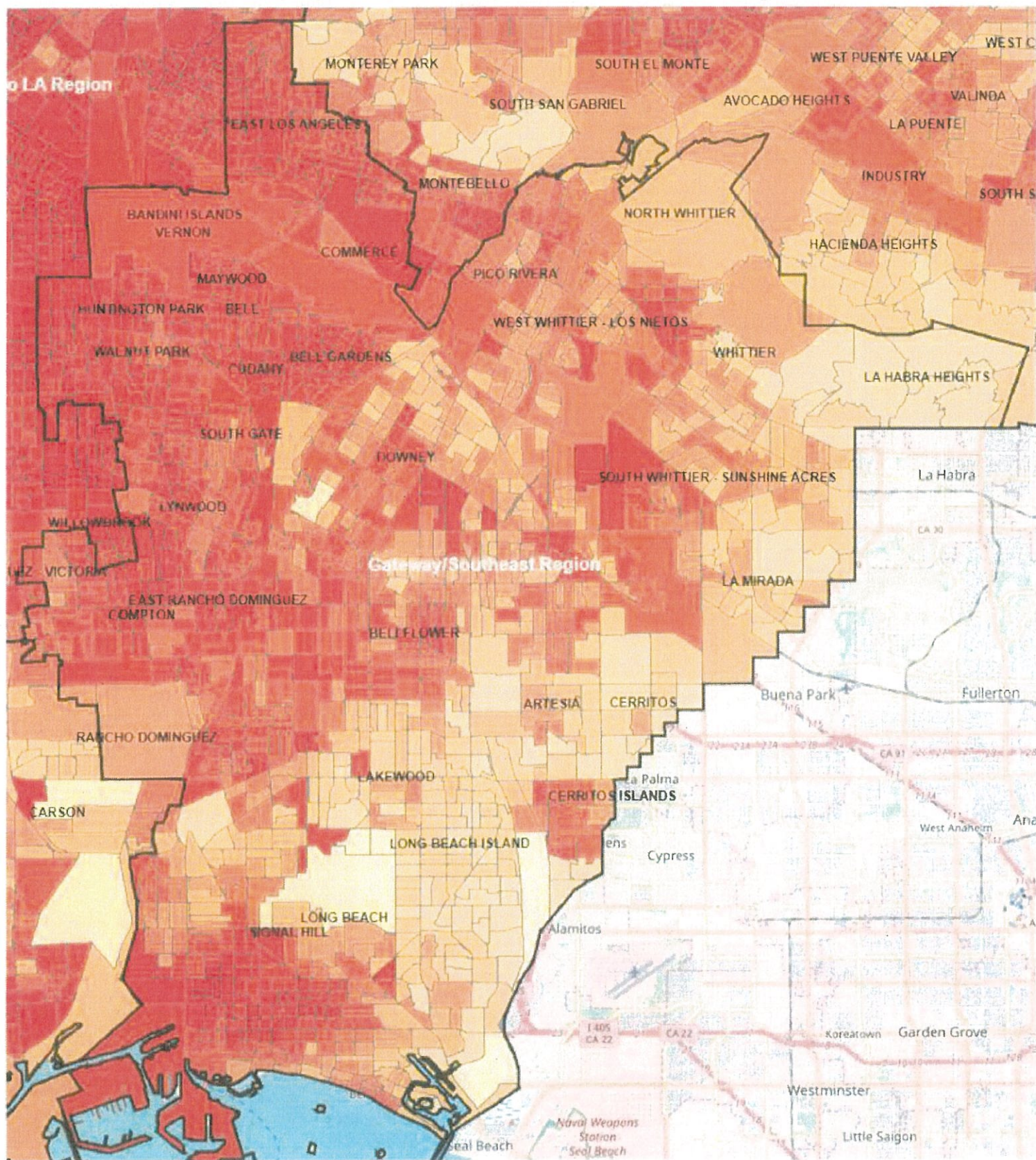
** The County will use 5% of the City/UA Funding Base to administer the program and the Contractor would be able to use 5% of the City/UA Funding Base for administration. The amounts in the highlighted City/UA Allocation column include the allowed Contractor Admin.

City and Unincorporated Area Allocations by Outreach Regions
Las Virgenes-Malibu COG Region

The Cities and Unincorporated Areas in this Region do not have hard-to-survey areas based on either the U.S. Census Bureau's LRS or State's CA-HTC Index methodologies:

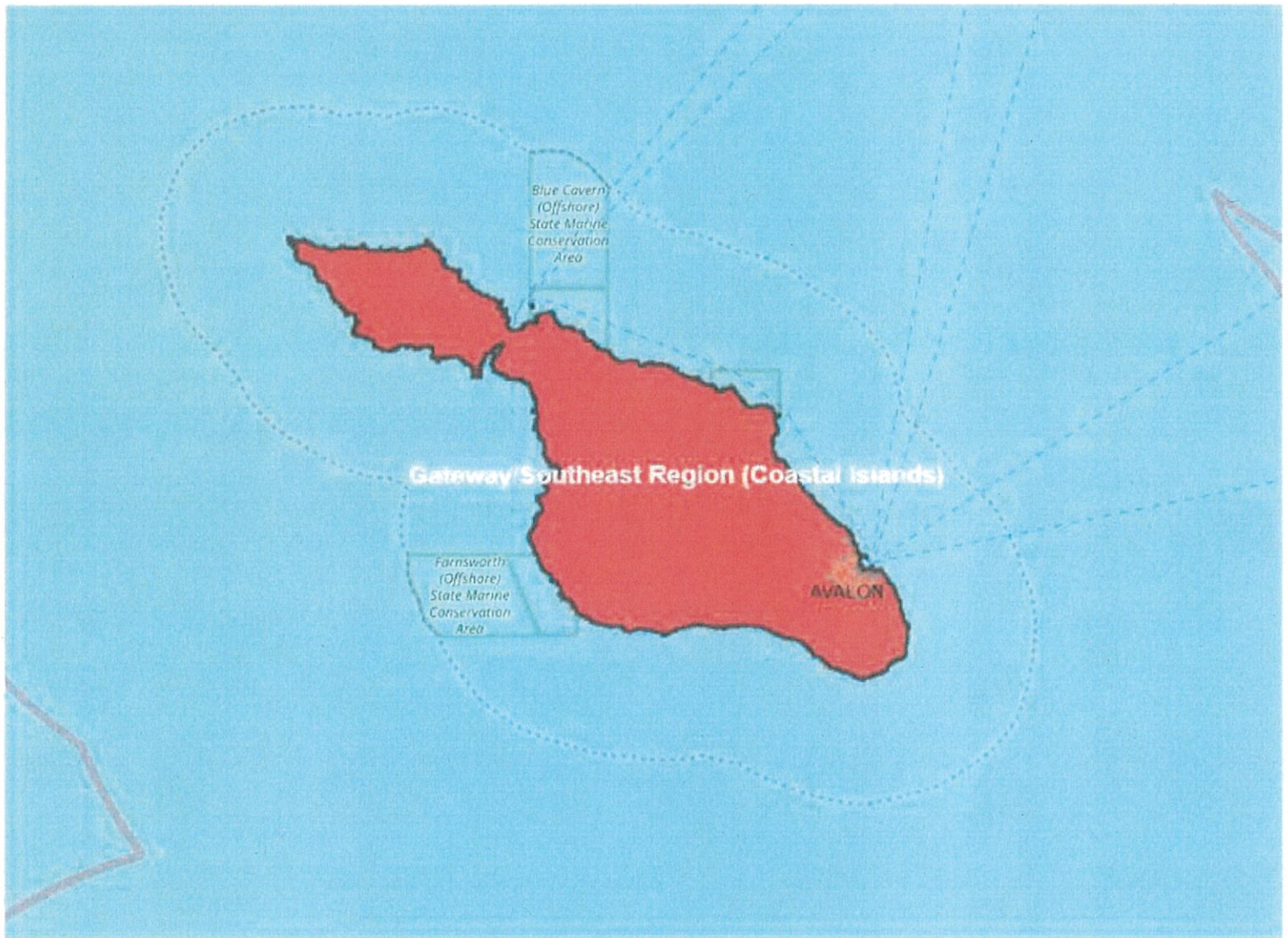
Sup District	City/Unincorporated Area
3	Agoura Hills
3	Calabasas
3	Hidden Hills
3	Malibu
3	Westlake Village
	Unincorporated - Santa Monica Mountains (including Topanga Canyon, Las Virgenes/Malibu Canyon, Malibu Lake, Malibu Bowl, Malibu Highlands, Cornell, Monte Nido, Seminole Hot Springs, Sunset Mesa, Triunfo Canyon, Calabasas Highlands, Mullholland Corridor, Sycamore Canyon)

Gateway/Southeast Region (U.S. Census Bureau LRS)



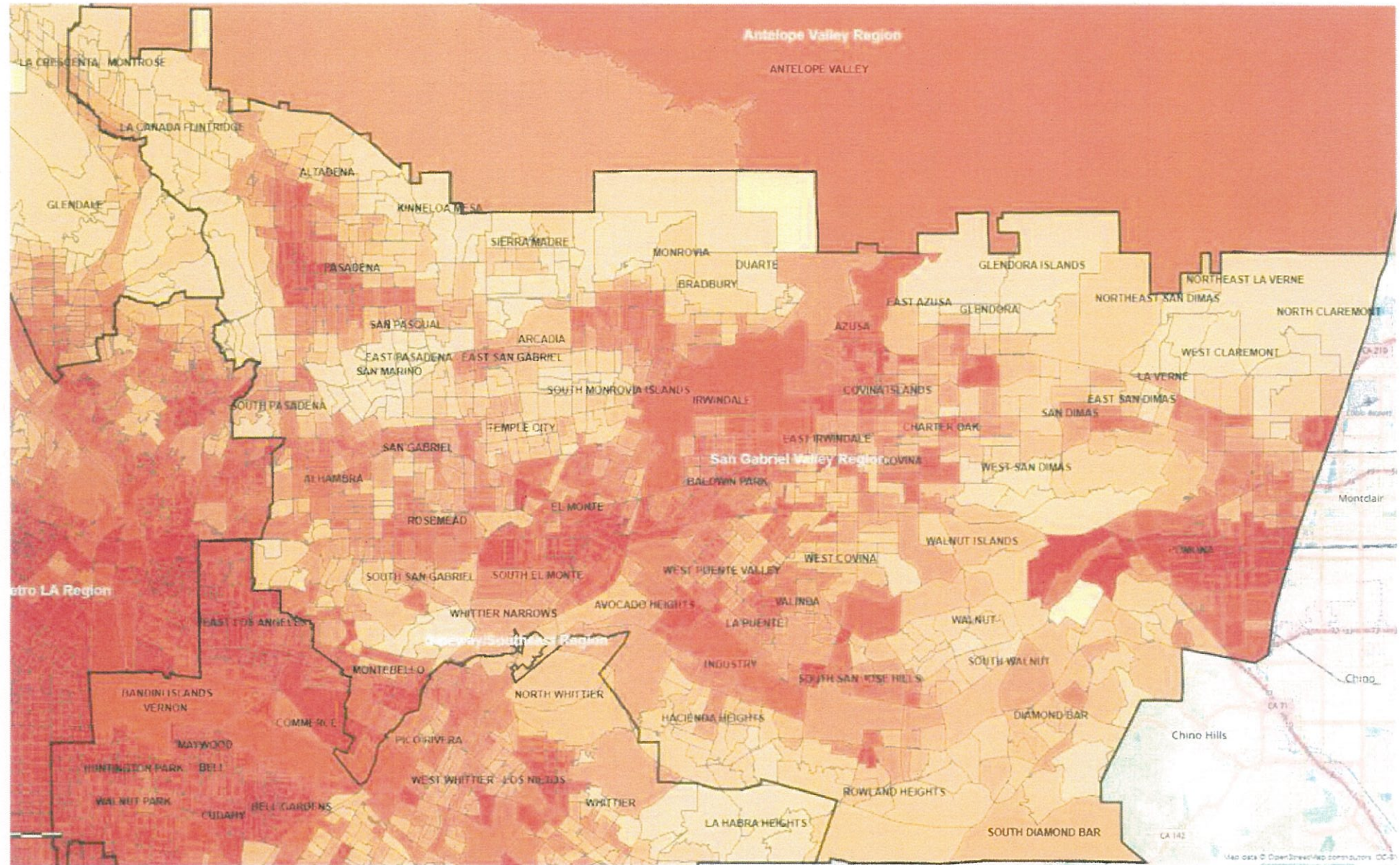
The Regional maps show hard-to-count areas based on the U.S. Census Bureau's Low Response Score. The areas shaded in red on the maps are the hardest to count, followed by areas shaded dark orange. The darker an area is shaded on the map, the more difficult it is to count.

Gateway/Southeast Region - Catalina Island (U.S. Census Bureau LRS)



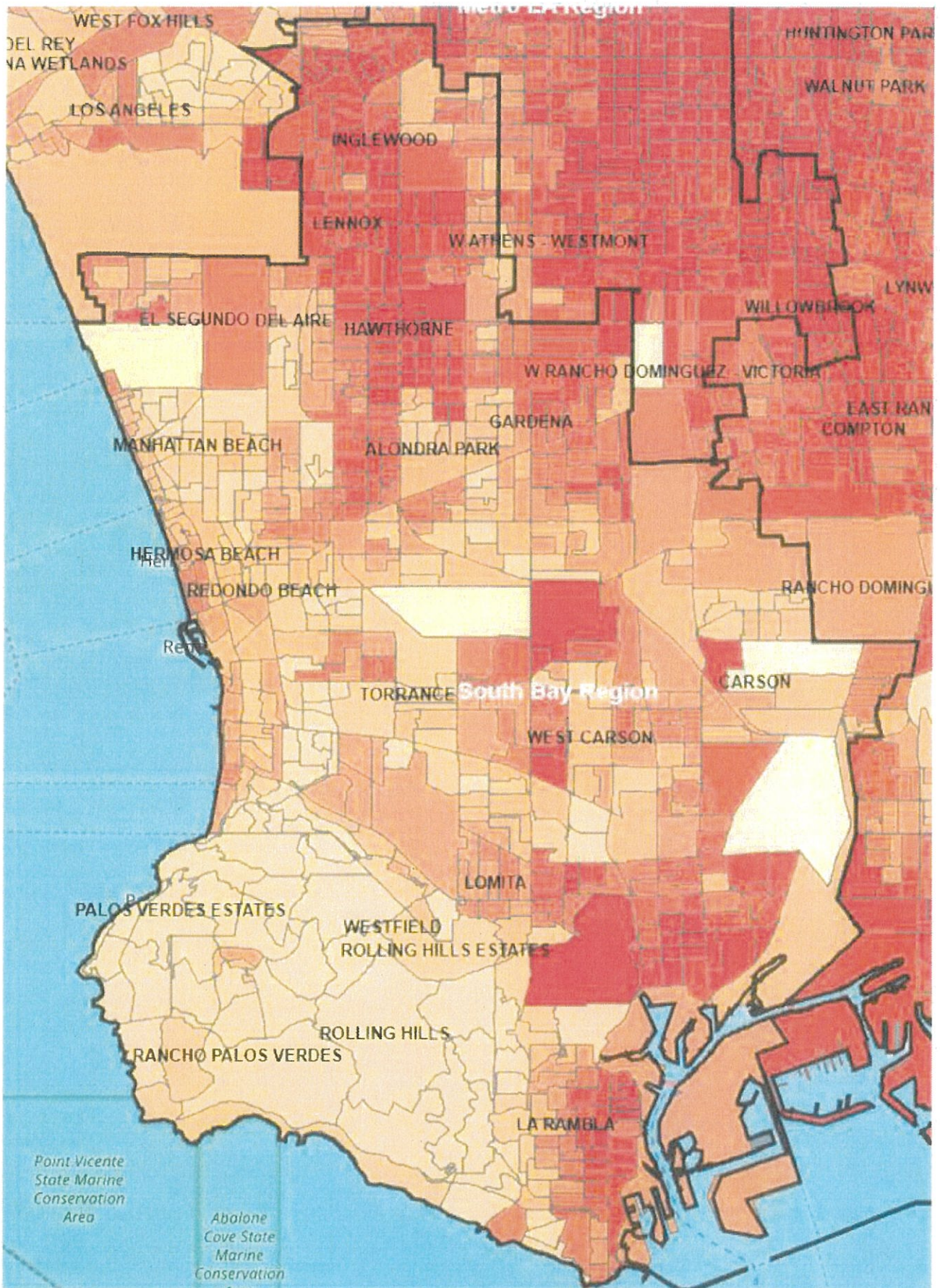
The Regional maps show hard-to-count areas based on the U.S. Census Bureau's Low Response Score. The areas shaded in red on the maps are the hardest to count, followed by areas shaded dark orange. The darker an area is shaded on the map, the more difficult it is to count.

San Gabriel Valley Region (U.S. Census Bureau LRS)



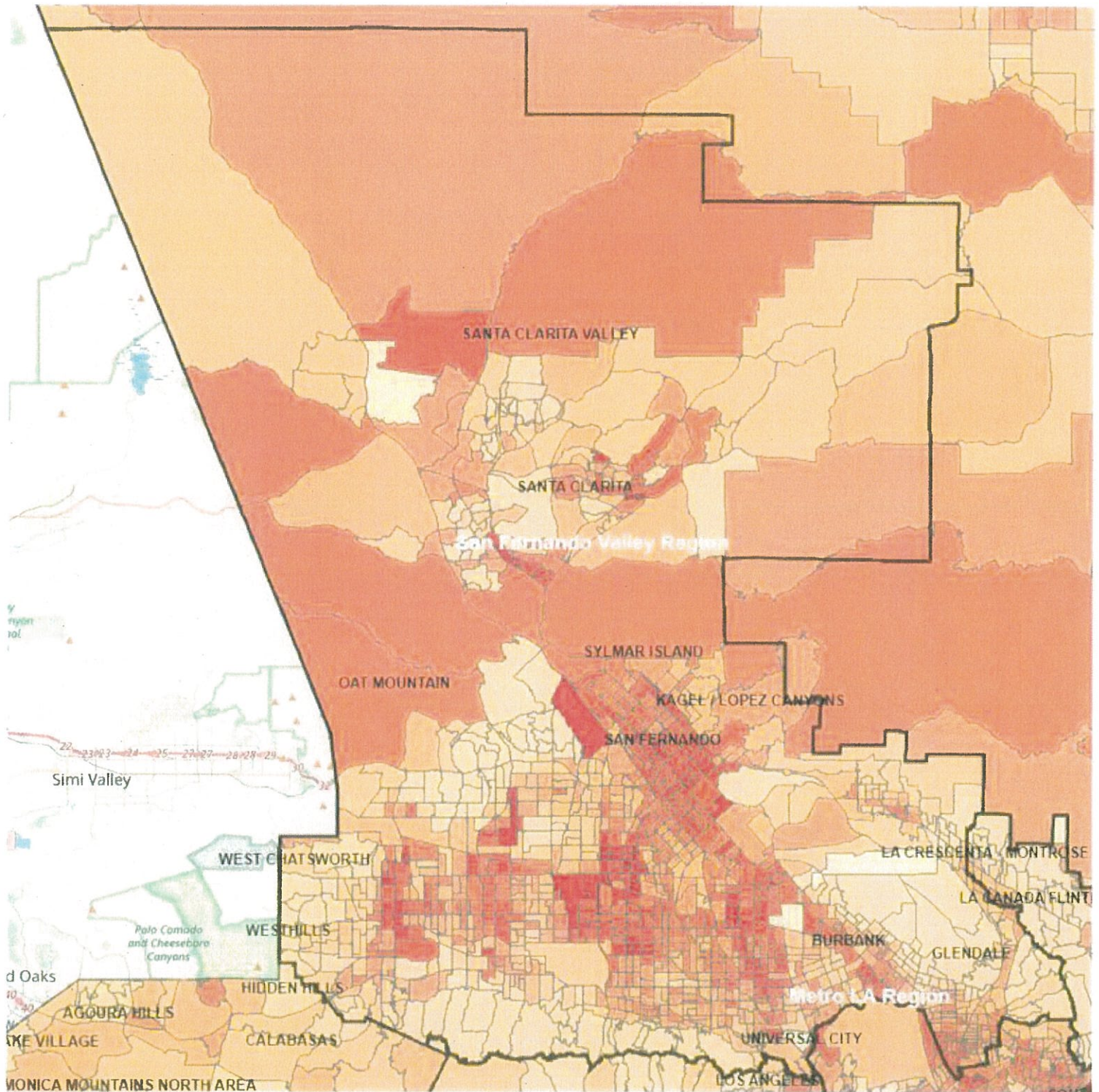
The Regional maps show hard-to-count areas based on the U.S. Census Bureau's Low Response Score. The areas shaded in red on the maps are the hardest to count, followed by areas shaded dark orange. The darker an area is shaded on the map, the more difficult it is to count.

South Bay Region (U.S. Census Bureau LRS)



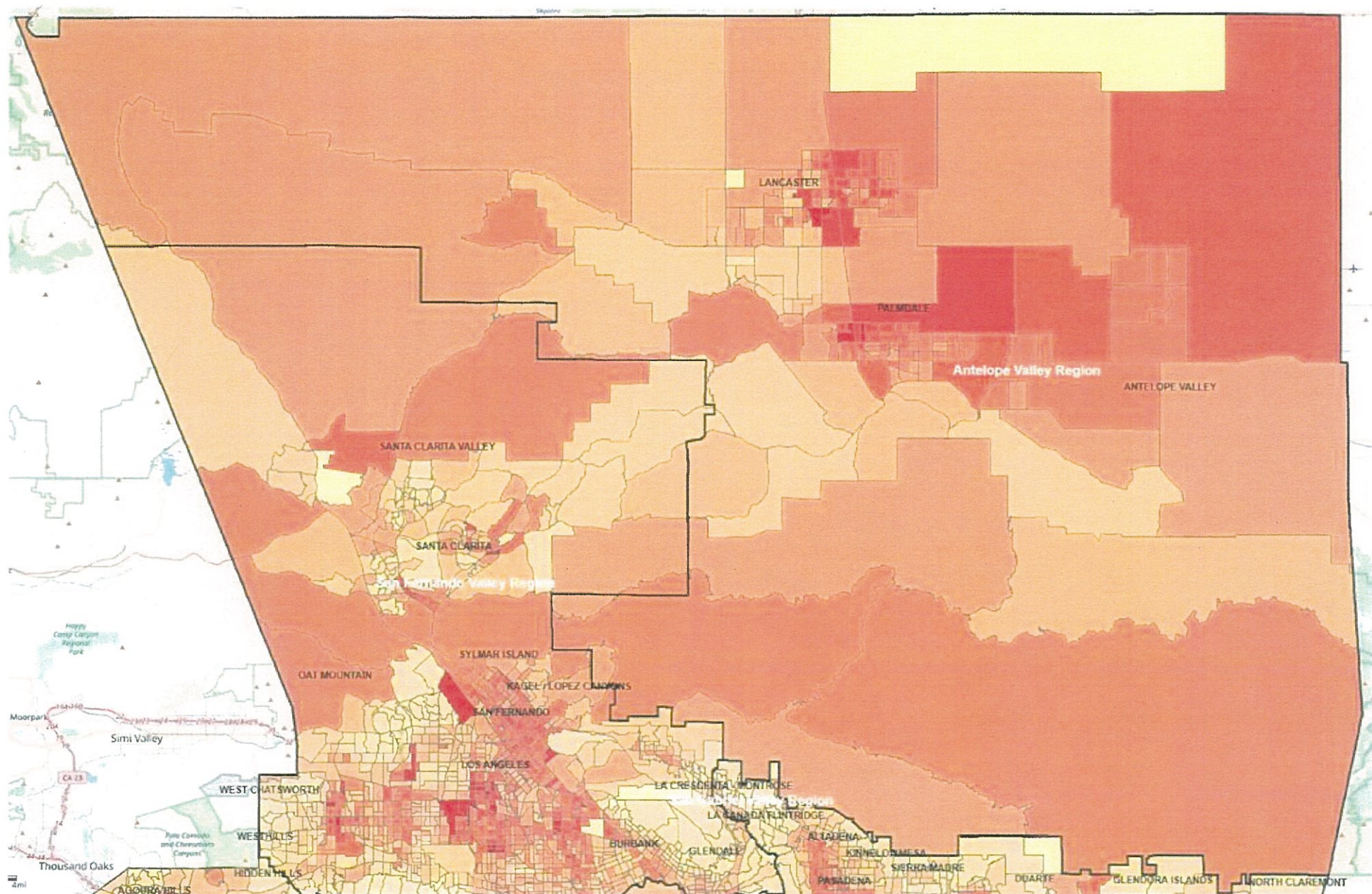
The Regional maps show hard-to-count areas based on the U.S. Census Bureau's Low Response Score. The areas shaded in red on the maps are the hardest to count, followed by areas shaded dark orange. The darker an area is shaded on the map, the more difficult it is to count.

San Fernando Valley Region (U.S. Census Bureau LRS)



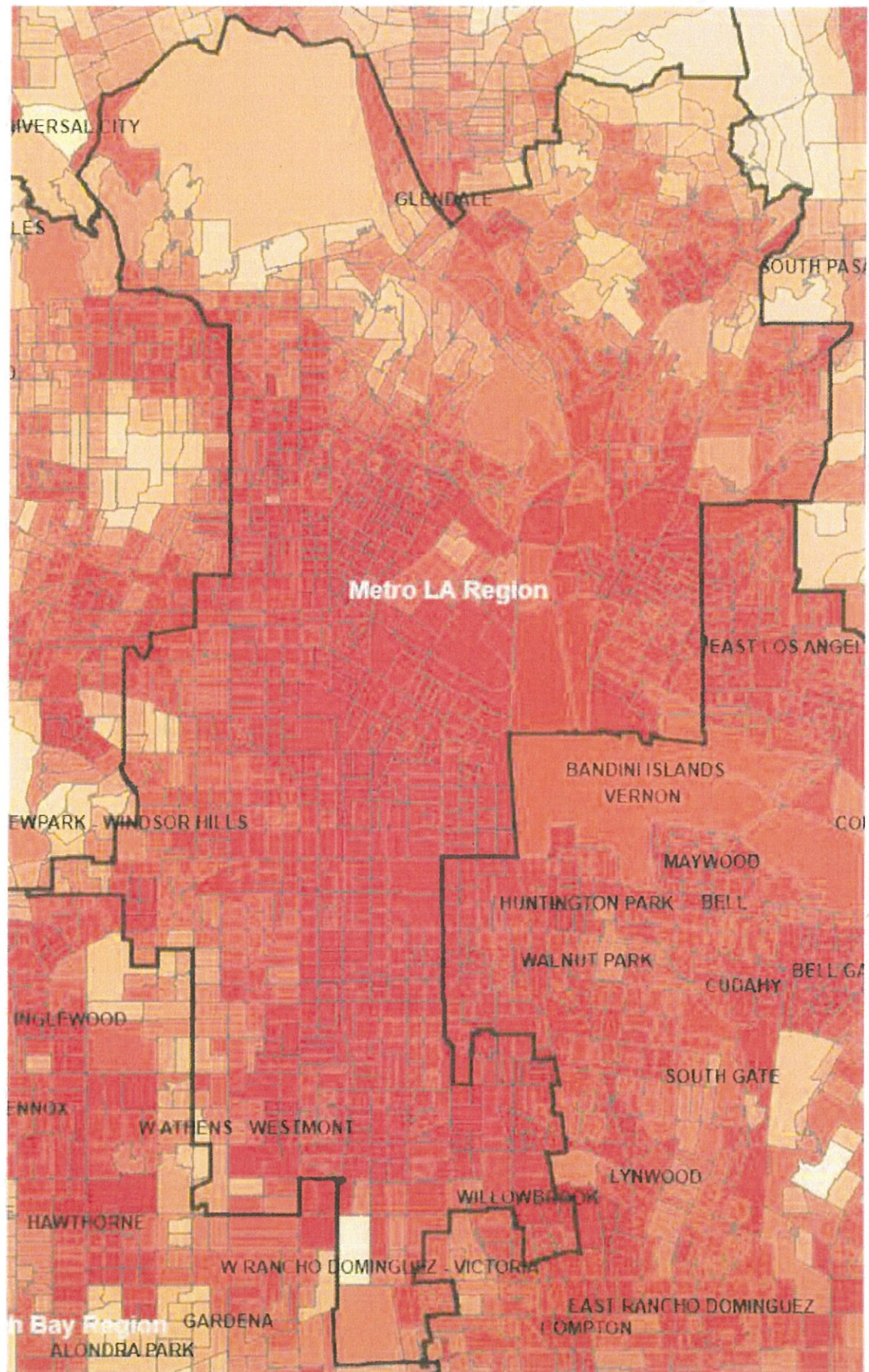
The Regional maps show hard-to-count areas based on the U.S. Census Bureau's Low Response Score. The areas shaded in red on the maps are the hardest to count, followed by areas shaded dark orange. The darker an area is shaded on the map, the more difficult it is to count.

Antelope Valley Region (U.S. Census Bureau LRS)



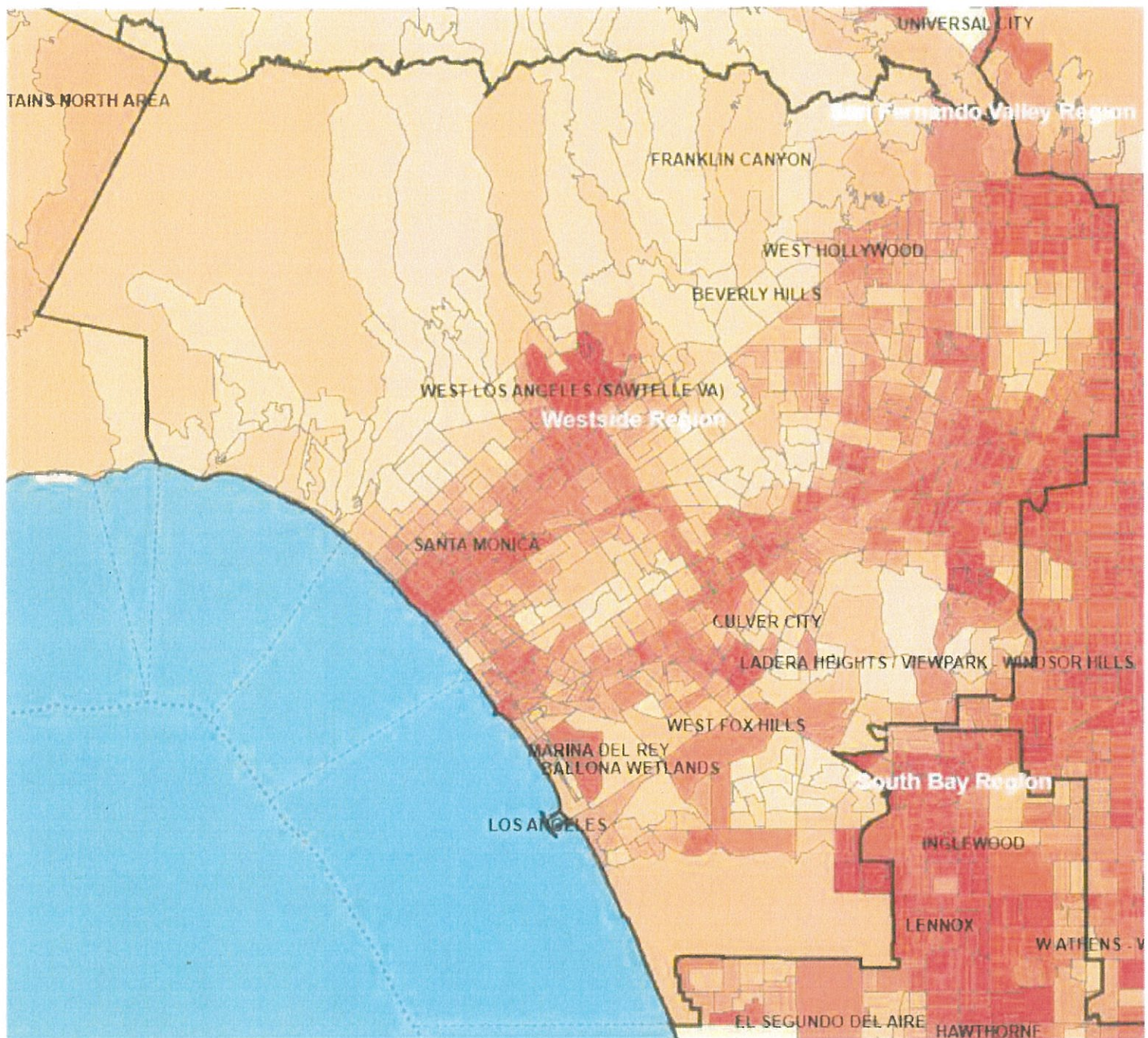
The Regional maps show hard-to-count areas based on the U.S. Census Bureau's Low Response Score. The areas shaded in red on the maps are the hardest to count, followed by areas shaded dark orange. The darker an area is shaded on the map, the more difficult it is to count.

Metro LA Region (U.S. Census Bureau LRS)



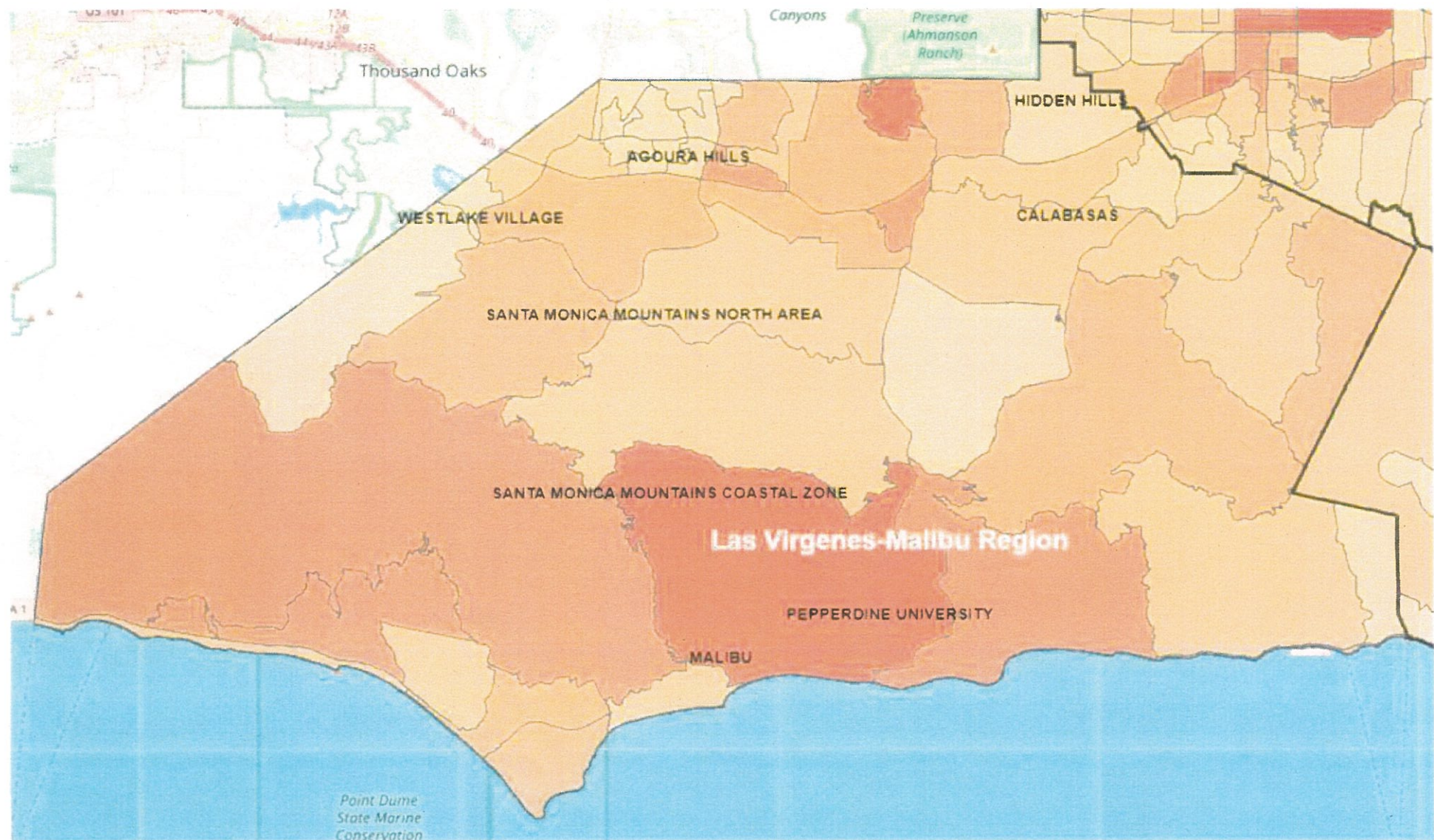
The Regional maps show hard-to-count areas based on the U.S. Census Bureau's Low Response Score. The areas shaded in red on the maps are the hardest to count, followed by areas shaded dark orange. The darker an area is shaded on the map, the more difficult it is to count.

Westside Region (U.S. Census Bureau LRS)



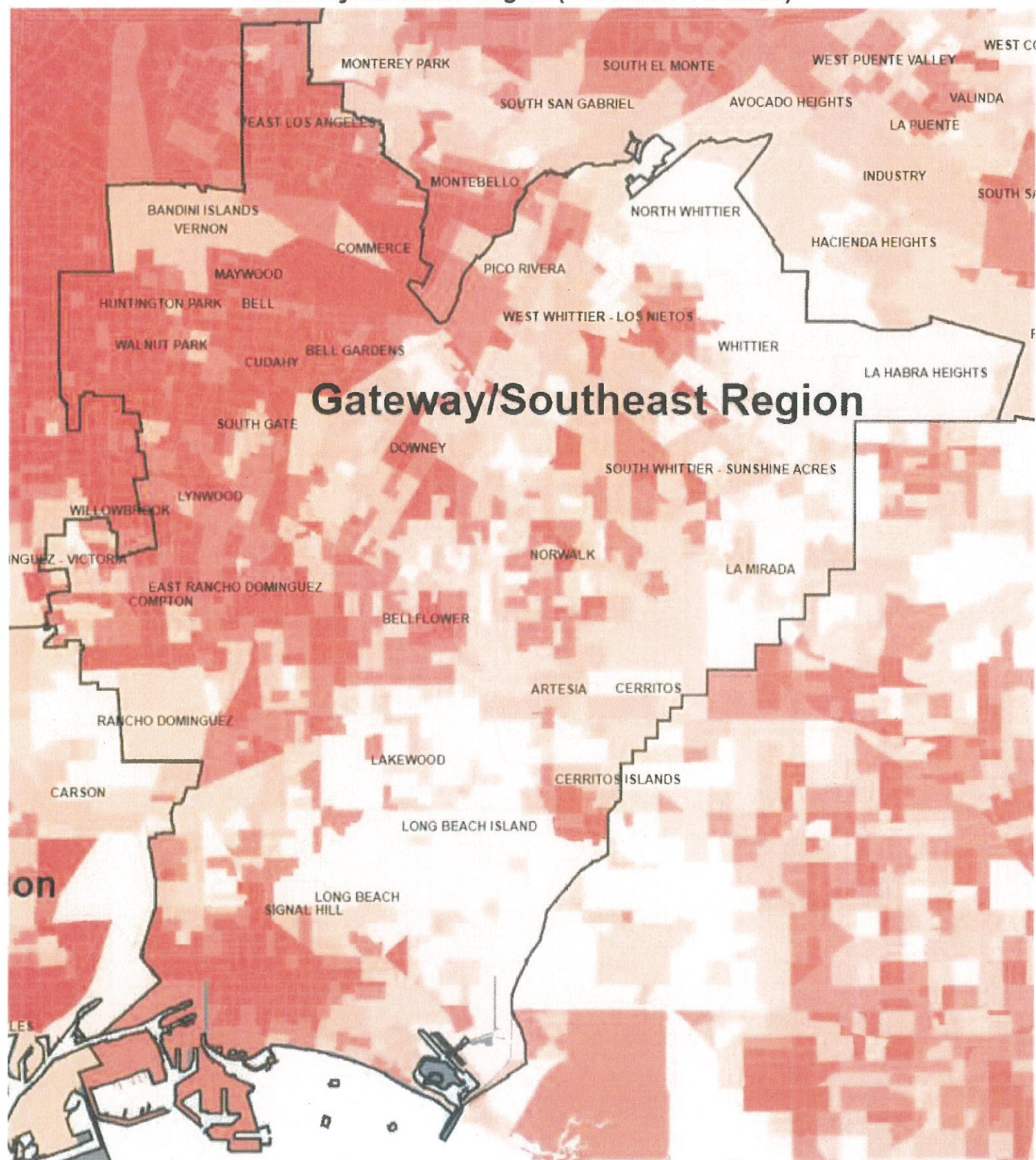
The Regional maps show hard-to-count areas based on the U.S. Census Bureau's Low Response Score. The areas shaded in red on the maps are the hardest to count, followed by areas shaded dark orange. The darker an area is shaded on the map, the more difficult it is to count.

Las Virgenes-Malibu Region (U.S. Census Bureau LRS)



The Regional maps show hard-to-count areas based on the U.S. Census Bureau's Low Response Score. The areas shaded in red on the maps are the hardest to count, followed by areas shaded dark orange. The darker an area is shaded on the map, the more difficult it is to count.

Gateway/Southeast Region (State CA-HTC Index)



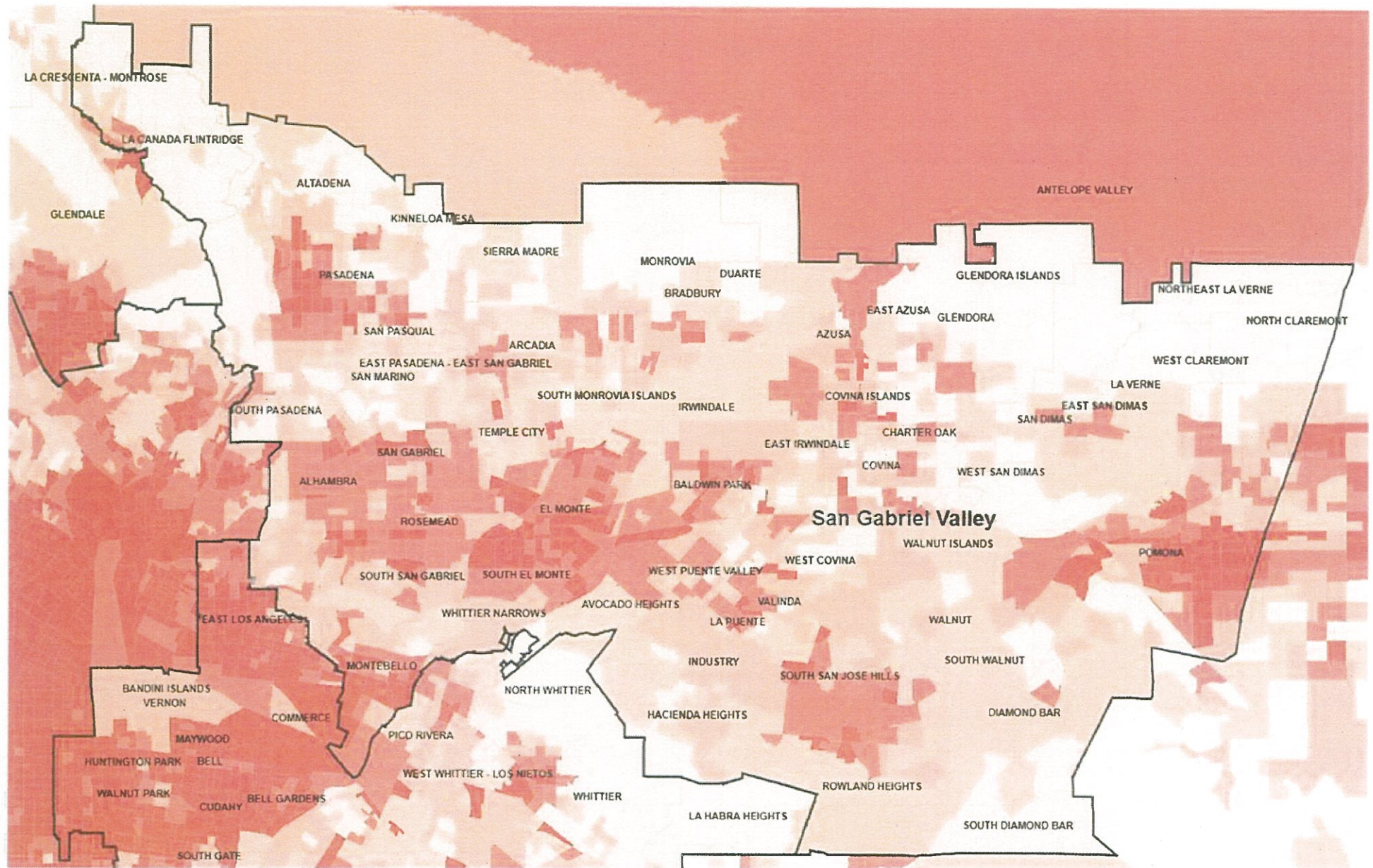
The Regional maps show hard-to-count areas based on the State's CA-HTC Index. The areas shaded in dark red on the maps are the hardest to count. The darker an area is shaded on the map, the more difficult it is to count.

Gateway/Southeast Region - Catalina Island (State CA-HTC Index)



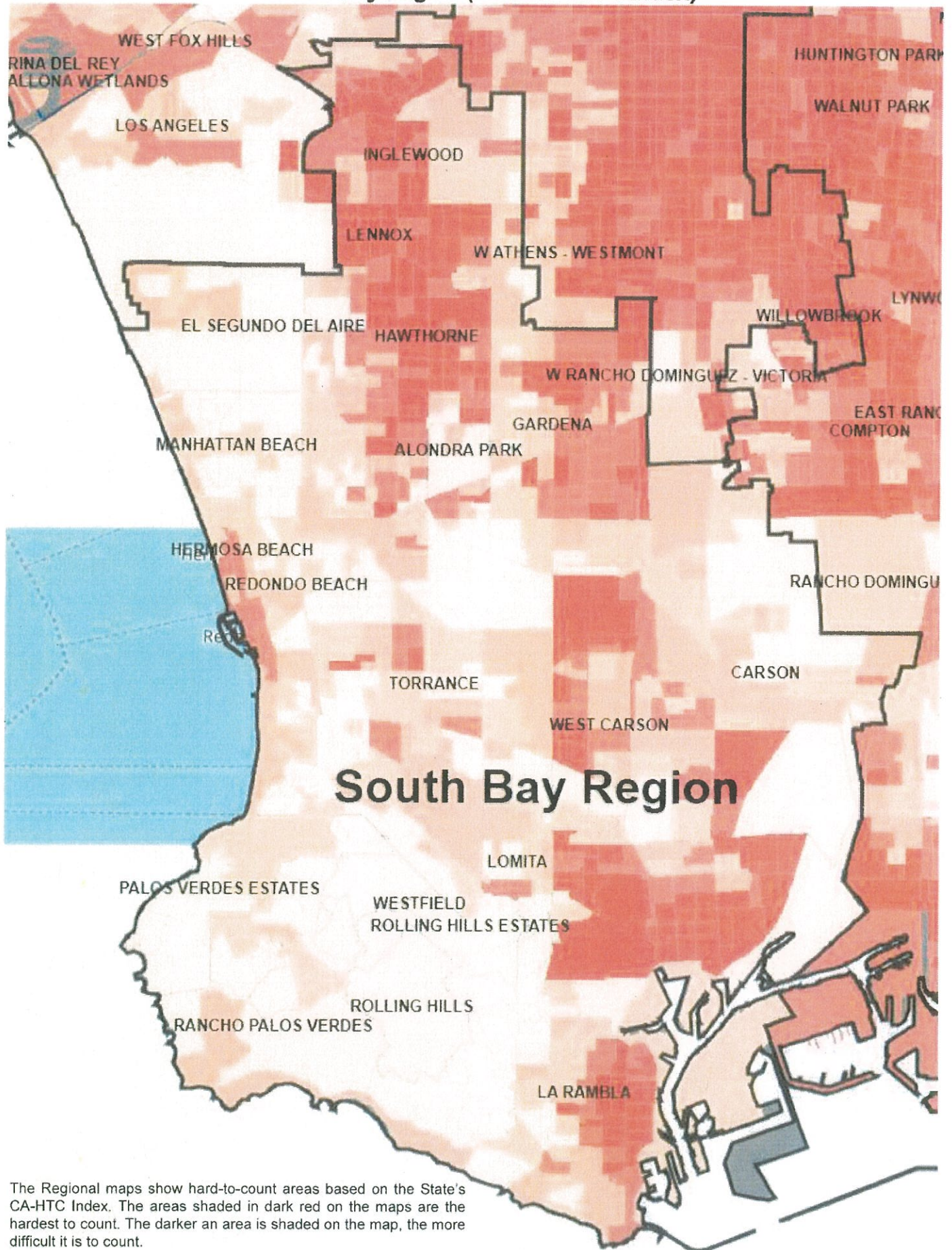
The Regional maps show hard-to-count areas based on the State's CA-HTC Index. The areas shaded in dark red on the maps are the hardest to count. The darker an area is shaded on the map, the more difficult it is to count.

San Gabriel Valley Region (State CA-HTC Index)



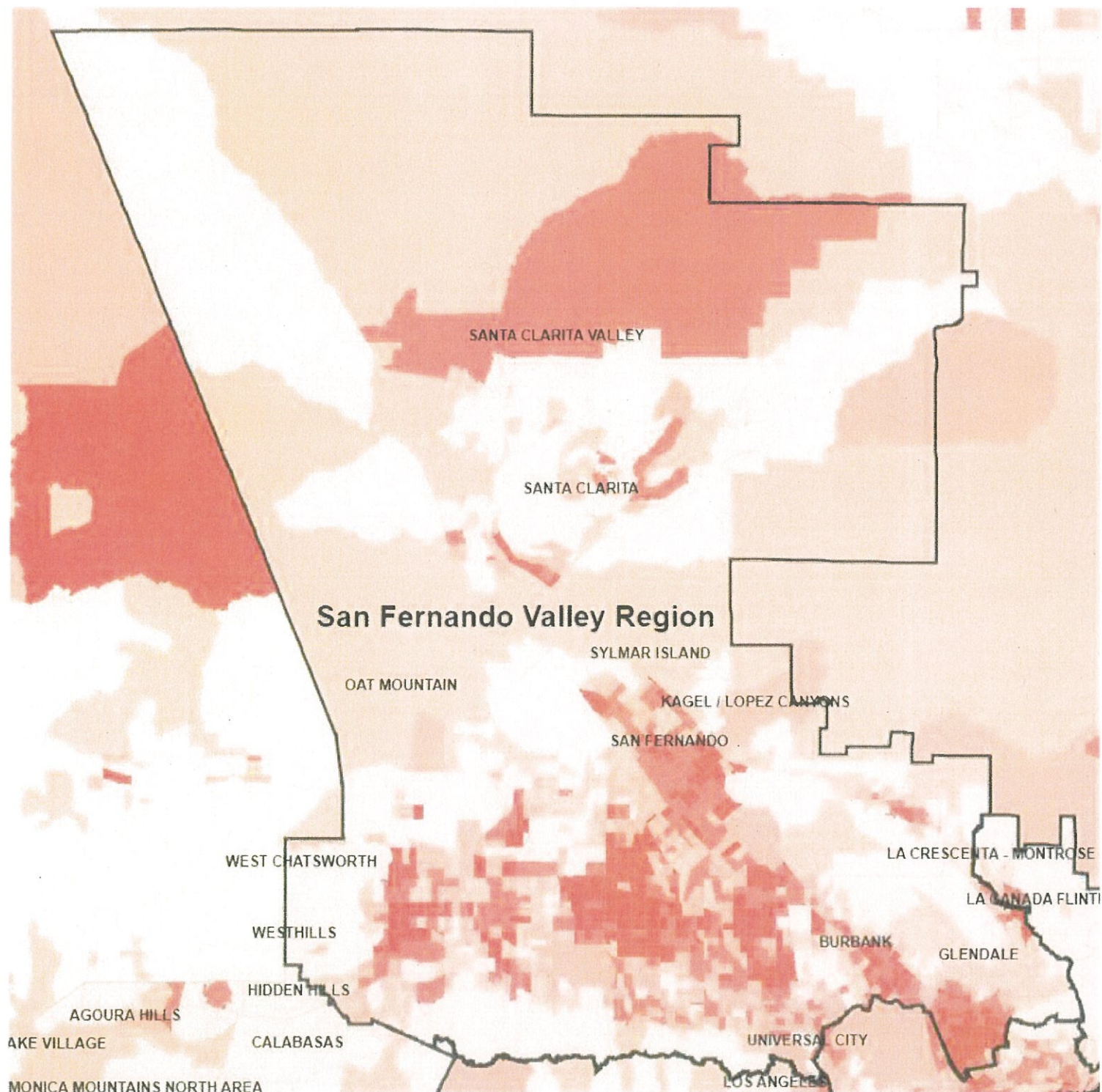
The Regional maps show hard-to-count areas based on the State's CA-HTC Index. The areas shaded in dark red on the maps are the hardest to count. The darker an area is shaded on the map, the more difficult it is to count.

South Bay Region (State CA-HTC Index)



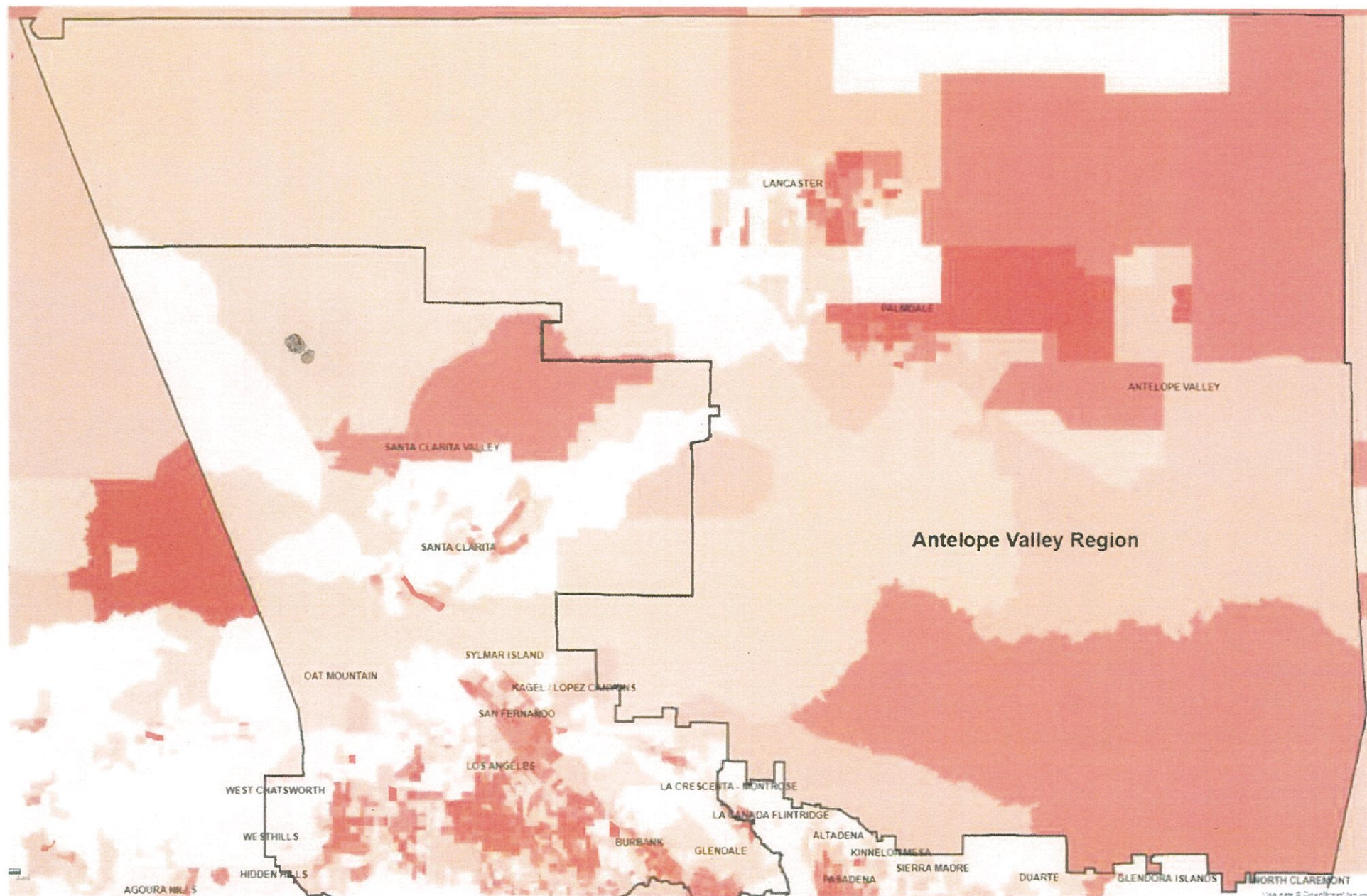
The Regional maps show hard-to-count areas based on the State's CA-HTC Index. The areas shaded in dark red on the maps are the hardest to count. The darker an area is shaded on the map, the more difficult it is to count.

San Fernando Valley Region (State CA-HTC Index)



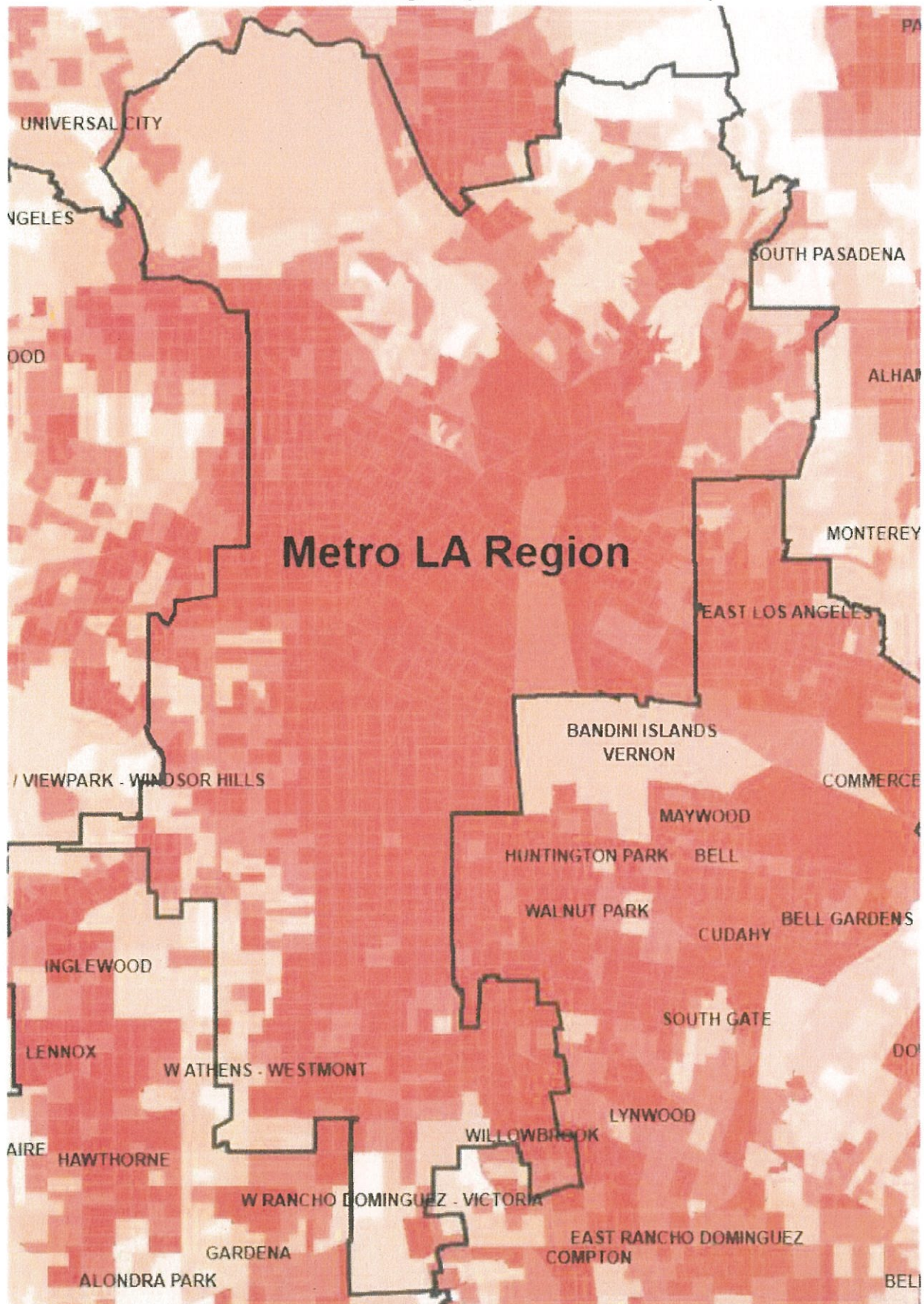
The Regional maps show hard-to-count areas based on the State's CA-HTC Index. The areas shaded in dark red on the maps are the hardest to count. The darker an area is shaded on the map, the more difficult it is to count.

Antelope Valley Region (State CA-HTC Index)



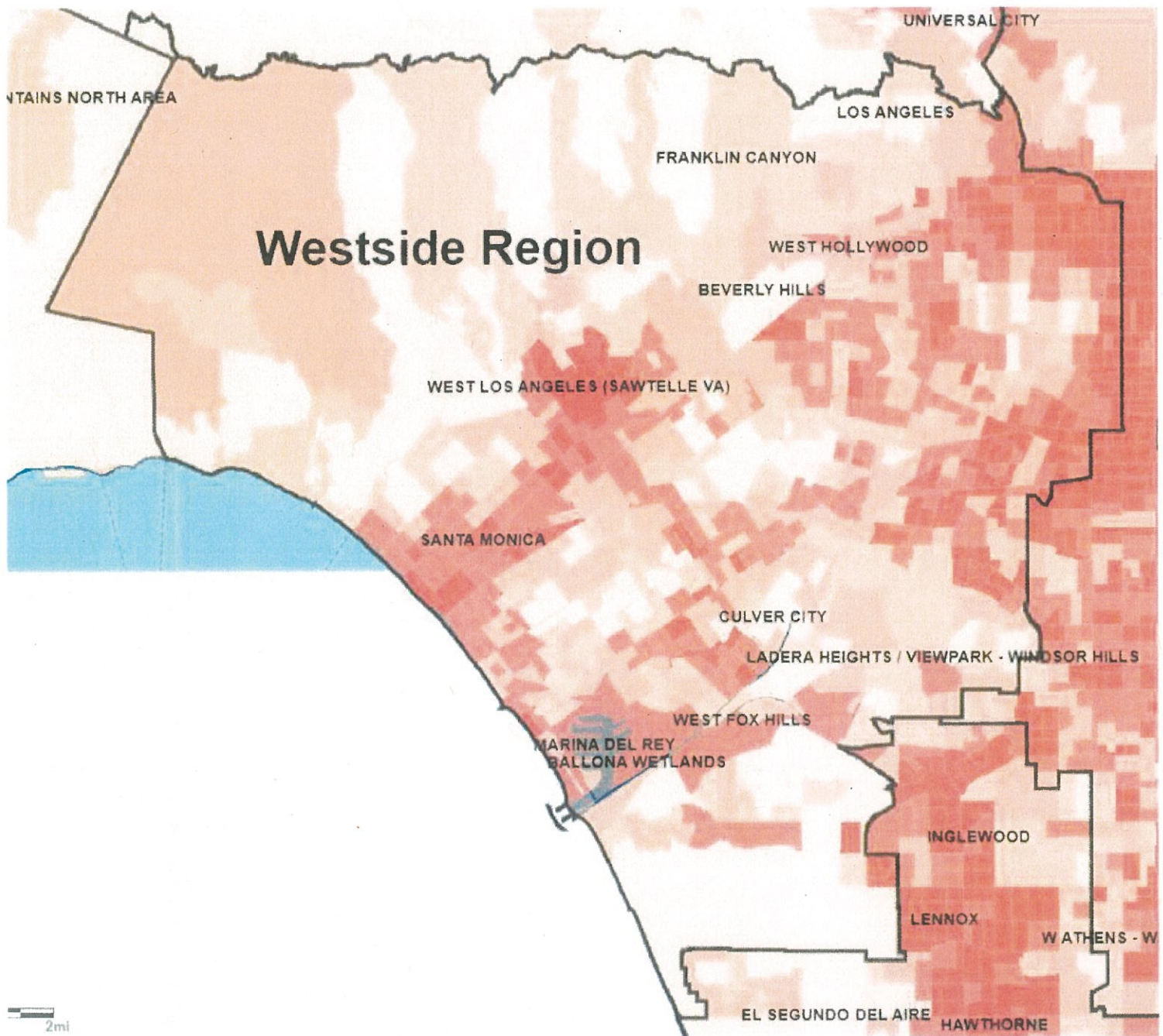
The Regional maps show hard-to-count areas based on the State's CA-HTC Index. The areas shaded in dark red on the maps are the hardest to count. The darker an area is shaded on the map, the more difficult it is to count.

Metro LA Region (State CA-HTC Index)



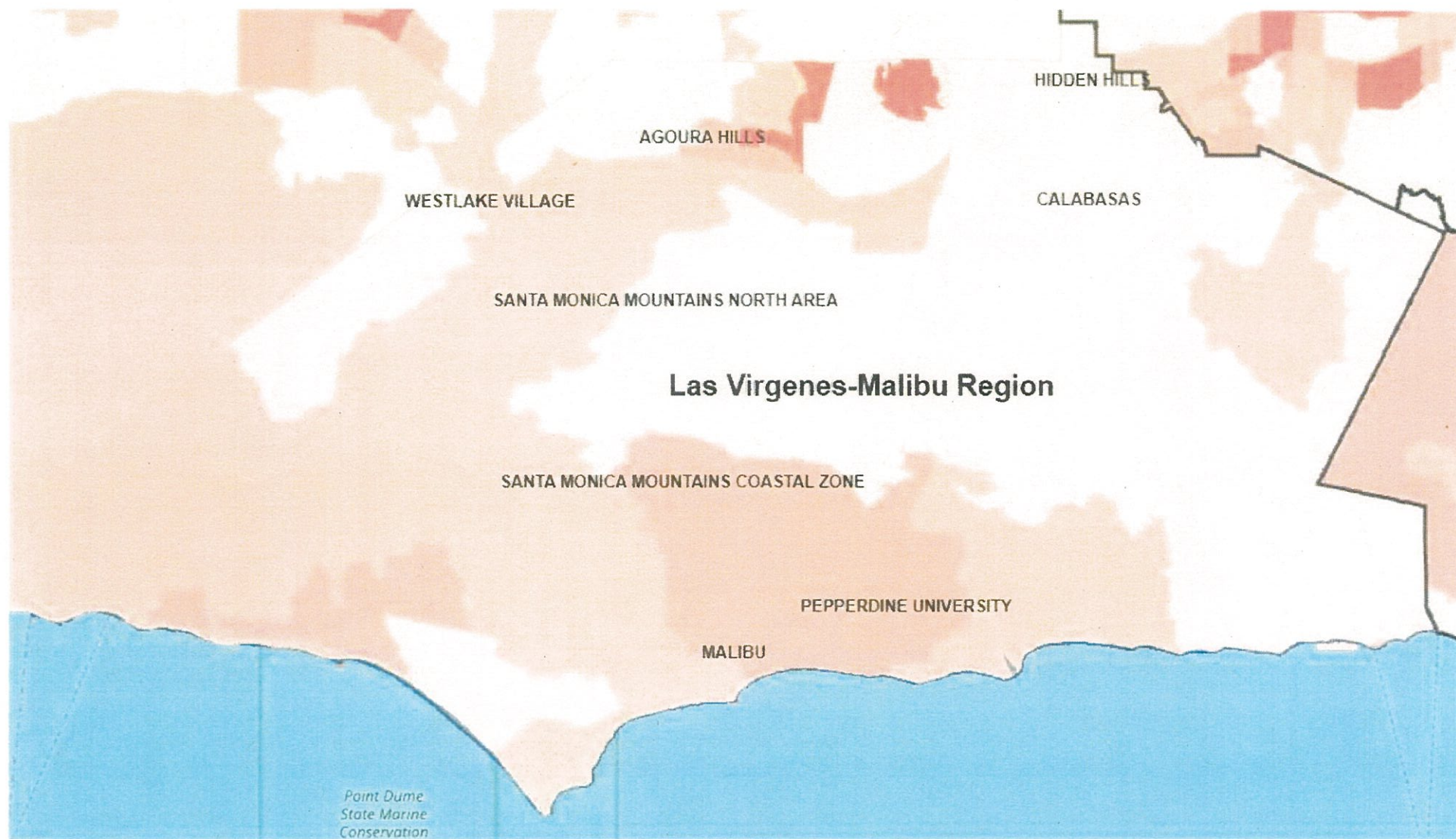
The Regional maps show hard-to-count areas based on the State's CA-HTC Index. The areas shaded in dark red on the maps are the hardest to count. The darker an area is shaded on the map, the more difficult it is to count.

Westside Region (State CA-HTC Index)



The Regional maps show hard-to-count areas based on the State's CA-HTC Index. The areas shaded in dark red on the maps are the hardest to count. The darker an area is shaded on the map, the more difficult it is to count.

Las Virgenes-Malibu Region (State CA-HTC Index)



The Regional maps show hard-to-count areas based on the State's CA-HTC Index. The areas shaded in dark red on the maps are the hardest to count. The darker an area is shaded on the map, the more difficult it is to count.