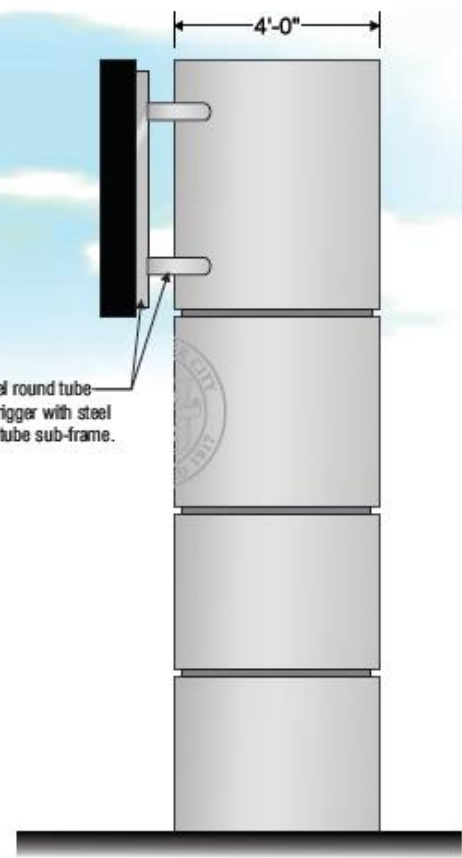


Estimate: \$98,850 + tax

- Screen:
- 5' x 12'
 - RGB Electronic Display
 - 8mm resolution (180 x 432 pixel matrix)

- Column:
- 15' Steel Pipe Column
 - 4' diameter decorative column cover
 - City Logo



A **OPTION-1**

Single side full color message center

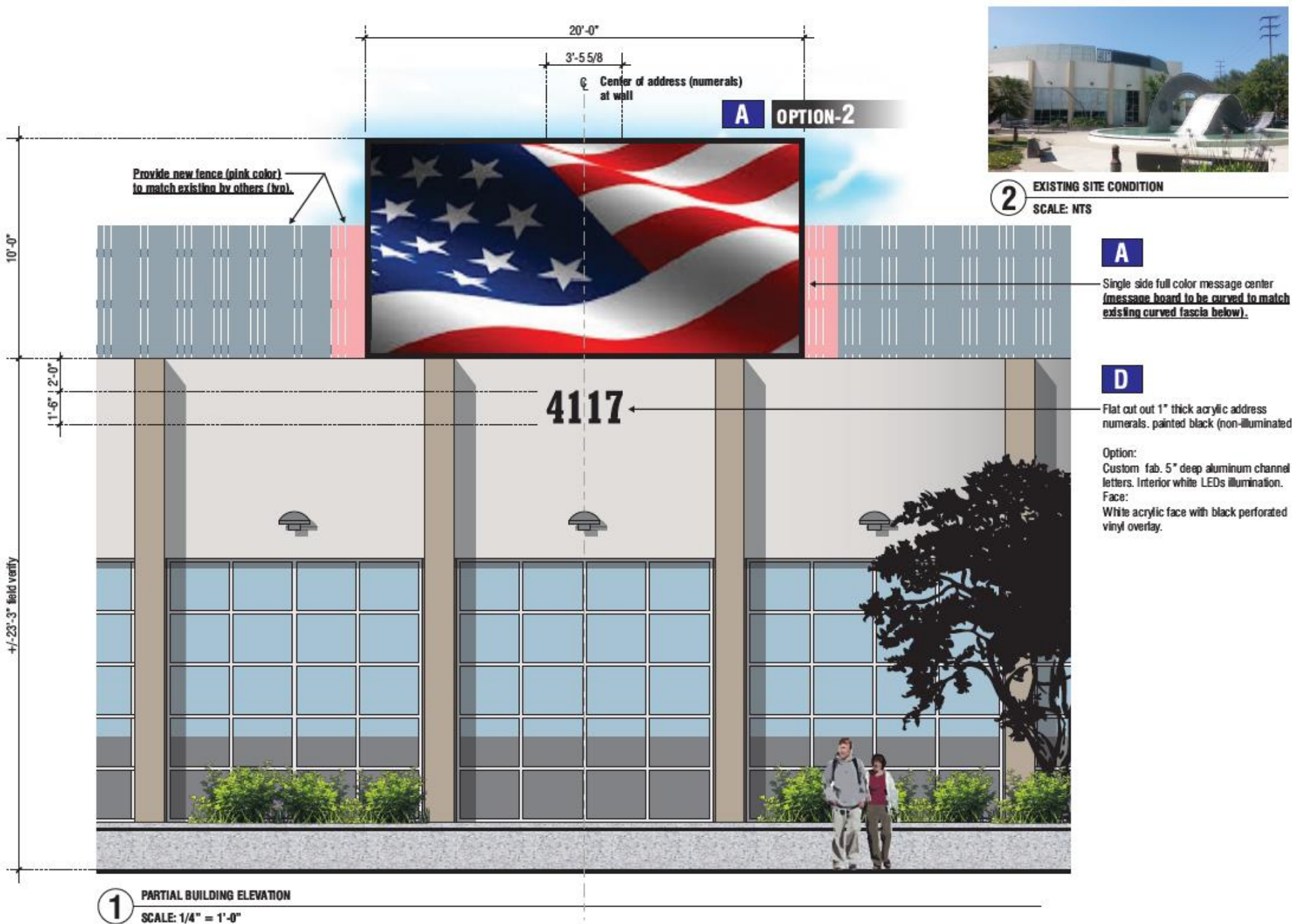
Custom fabricated aluminum round column with reveals, painted to match Matthews paint brushed aluminum finish.



A SINGLE SIDED MONUMENT SIGN WITH FULL COLOR MESSAGE CENTER 60.00 SQ FT
QUANTITY: ONE (1) SIGN REQUIRED SCALE: 3/8" = 1'-0"

1 RIGHT SIDE ELEVATION
SCALE: 3/8" = 1'-0"

4 PLAN VIEW
SCALE: NTS



Estimate: \$184,250 + tax

Radius Screen:

- 10' x 20'
- RGB Electronic Display
- 10mm resolution (300x 600 pixel matrix)



B

Custom fabricated 6" deep aluminum cabinet with alum. square tube framing, mounted on existing vertical columns. painted cabinet all sides blue.
Faces: Routed aluminum face for 1/2" thick clear acrylic push thru letters. White translucent vinyl applied on first surface of push thru letters
Illumination: internal white LEDs illuminated with power supplies inside of cabinet.



2 EXISTING SITE CONDITION
SCALE: NTS

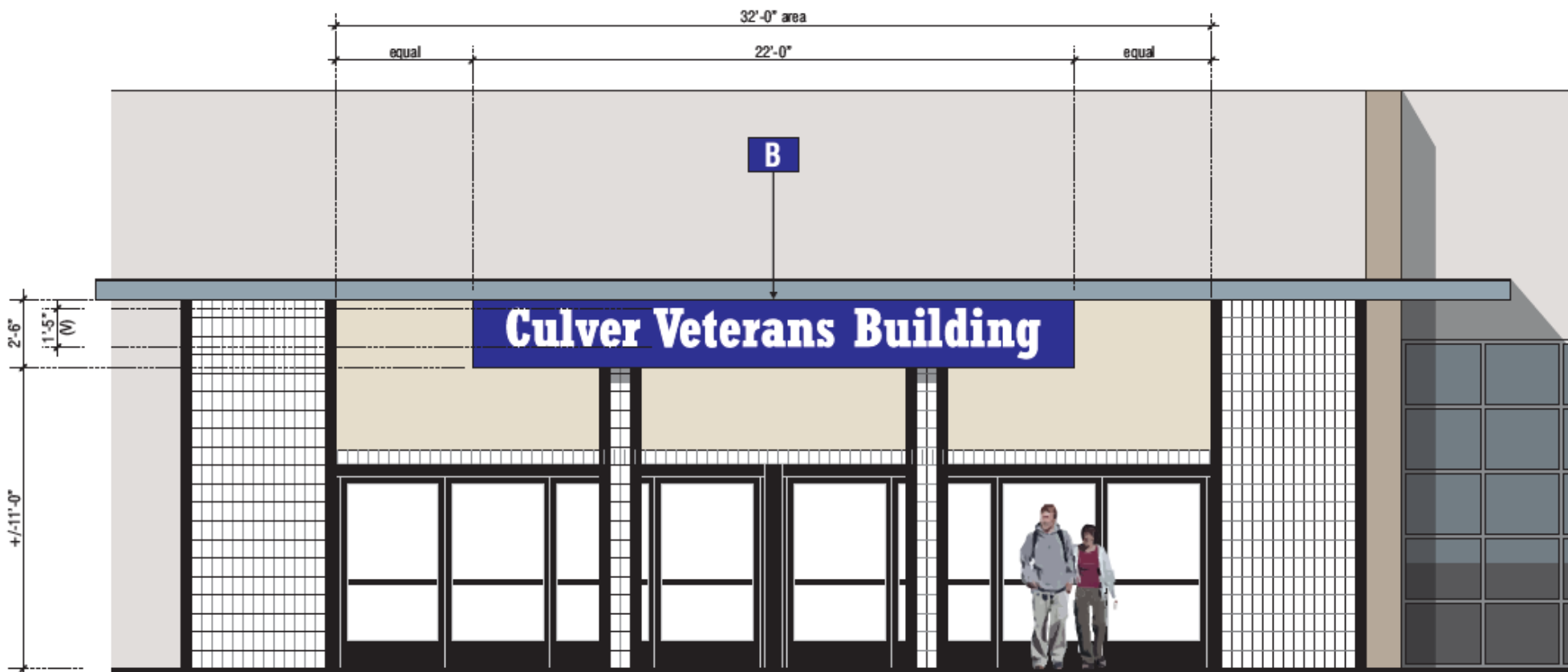


3 EXISTING SITE CONDITION
SCALE: NTS

Estimate: \$15,885 + tax

Aluminum Sign:

- 2.5' x 22'
- 1/2" acrylic inlay
- Illuminated for "halo effect"



1 FRONT EXTERIOR BUILDING ELEVATION
SCALE: 1/4" = 1'-0"

Estimate: \$23, 835 + tax

Screen:

- 3' x 15'
- Monochrome Amber Electronic Display
- 19mm (48 x 240 pixel matrix)

C

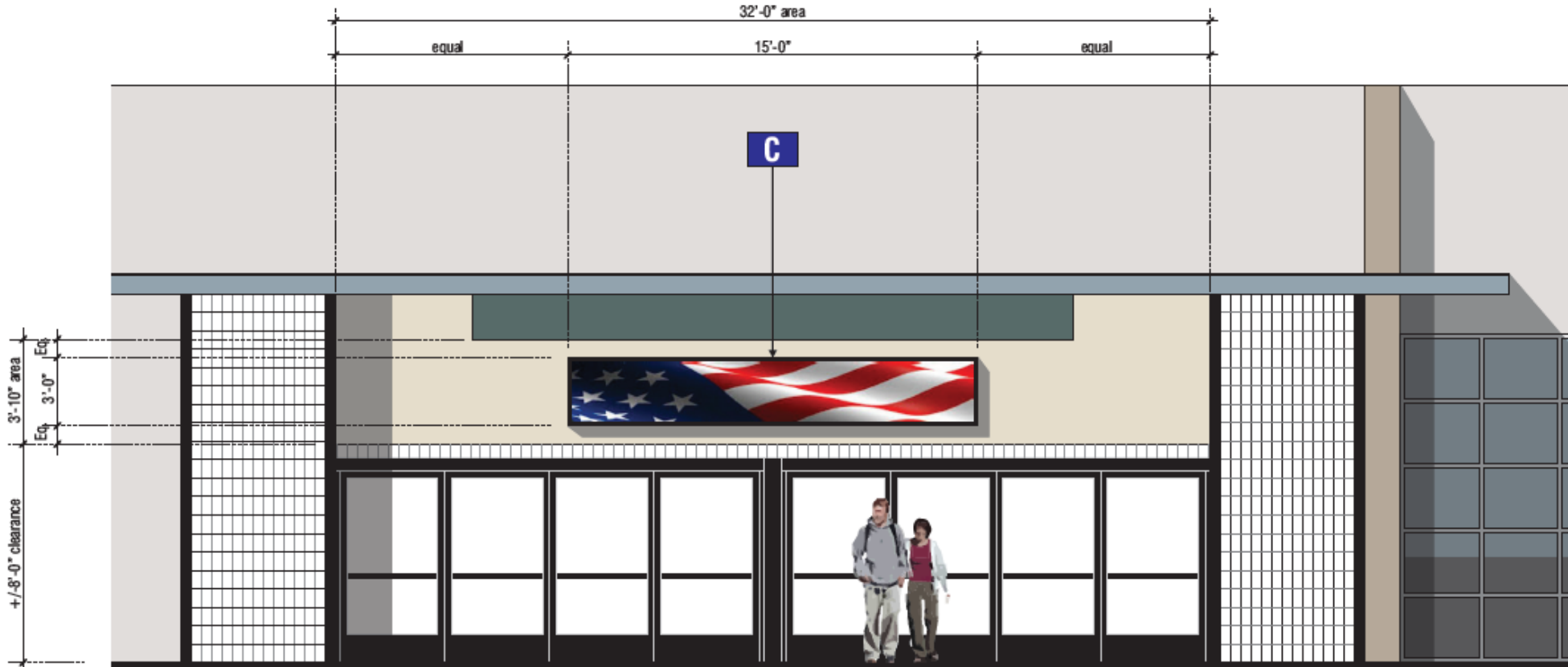
Single side full color message center mounted on wall above doors.



2 EXISTING SITE CONDITION
SCALE: NTS



3 EXISTING SITE CONDITION
SCALE: NTS



1 FRONT ENTRANCE ELEVATION
SCALE: 1/4" = 1'-0"



Estimate: \$164,587

Radius Screen:

- 10' 11" x 23' 6"
- RGB Electronic Display
- 10mm resolution (320x 736 pixel matrix)
- 2-year Cloud-Based Communication Subscription
- Lifetime support & software upgrades warranty
- 5-year factory parts warranty



Estimate: \$141,789

Radius Screen:

- 10' 11" x 20' 5"
- RGB Electronic Display
- 10mm resolution (320x 608 pixel matrix)
- 2-year Cloud-Based Communication Subscription
- Lifetime support & software upgrades warranty
- 5-year factory parts warranty



Pillar:

Estimate: \$47,397

Screen:

- 6' 9" x 12'
- RGB Electronic Display
- 10mm resolution (192 x 352 pixel)
- 2-year Cloud-Based Communication Subscription
- Wireless Communication System
- Lifetime support & software upgrades warranty
- 5-year factory parts warranty

Column:

- Pole with pole cover and logo



Wall Sign:

Estimate: \$39,489

Screen:

- 3' 7" x 21' 5"
- RGB Electronic Display
- 10mm resolution (96x 640 pixel matrix)
- 2-year Cloud-Based Communication Subscription
- Lifetime support & software upgrades warranty
- 5-year factory parts warranty



Wall Sign:

Estimate: \$20,647

Screen:

- 3' 7" x 9' 11"
- RGB Electronic Display
- 10mm resolution (96x 288 pixel matrix)
- 2-year Cloud-Based Communication Subscription
- Lifetime support & software upgrades warranty
- 5-year factory parts warranty