

| TOTAL BILL OF MATERIALS | | | |
|-------------------------|-------------------------------|----------|---------|
| NO. | MATERIAL | QUANTITY | FOOTAGE |
| 1 | AERIAL FIBER (CULVER CITY RW) | - | 1,314± |
| 2 | AERIAL COAX (CULVER CITY RW) | - | 1,815± |
| | | | |
| | | | |



DRAFTED BY.....

KB
ENGINEERING

290 CORPORATE TERRACE CIRCLE
STE. 200, CORONA, CA 92879

WWW.KBENG.NET

TEL. 951-808-9501
FAX. 951-808-9518

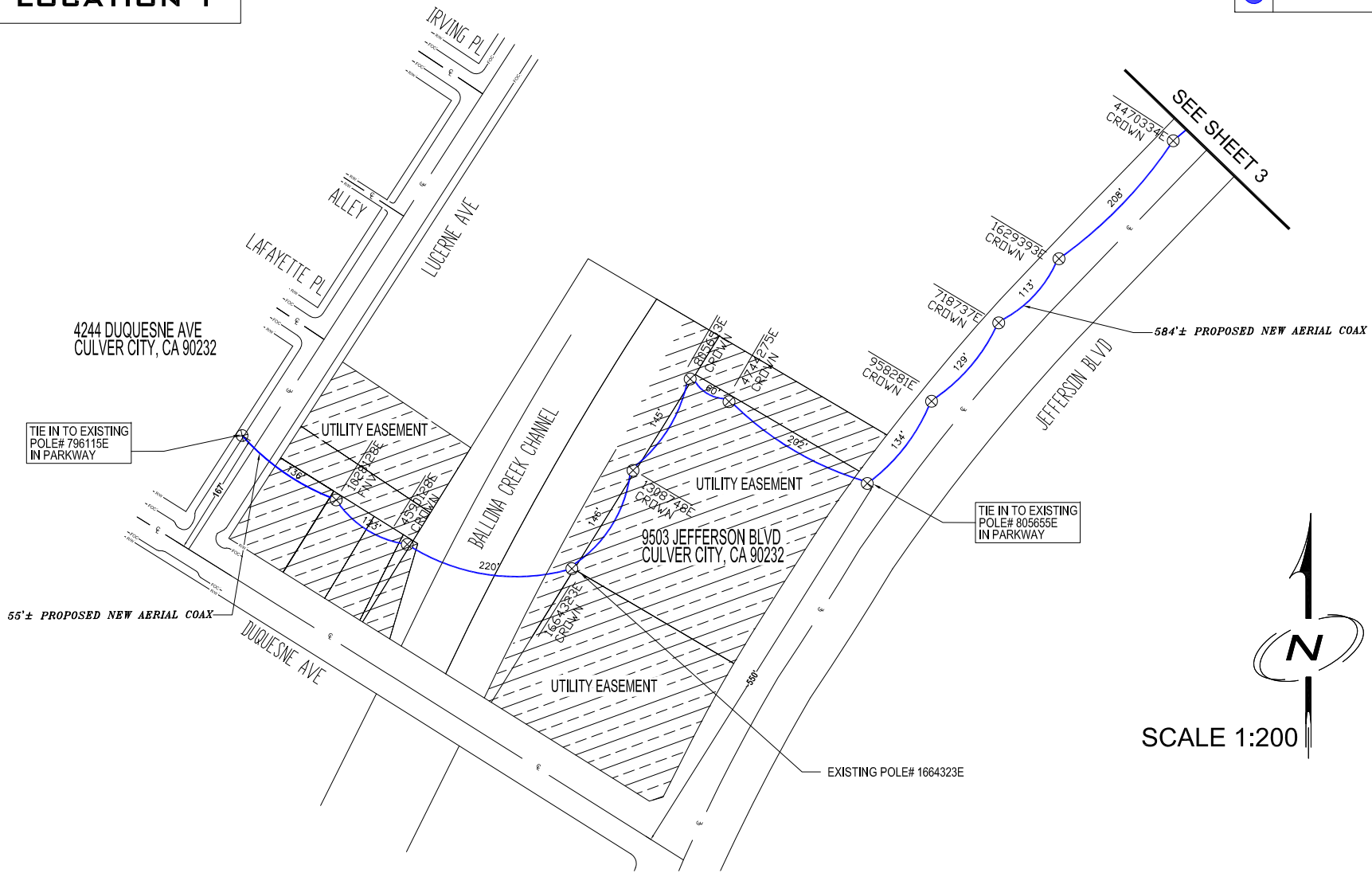
KEYMAP

SYSTEM EXHIBIT

SHEET NO.
1 OF 5

LOCATION 1

PROP. AERIAL



SCALE 1:200

BILL OF MATERIALS

| NO. | MATERIAL | QUANTITY | FOOTAGE |
|-----|------------------------------|----------|---------|
| 1 | AERIAL COAX (CULVER CITY RW) | — | 639' ± |
| | | | |
| | | | |
| | | | |
| | | | |
| | | | |
| | | | |
| | | | |
| | | | |
| | | | |

CROWN CASTLE

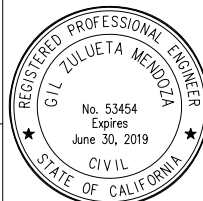
DESIGNED BY.....

290 CORPORATE TERRACE CIRCLE
STE. 200, CORONA, CA 92879

WWW.KBENG.NET

TEL. 951-808-9501
FAX. 951-808-9518

CONSULTANT ENGINEER INFORMATION



PROJECT NO. _____
PLAN NO. _____

PROJECT NAME:

SANTA MONICA EAST

LOCATION:

DUQUESNE AVE & LUCERNE AVE

PROJECT DESCRIPTION:

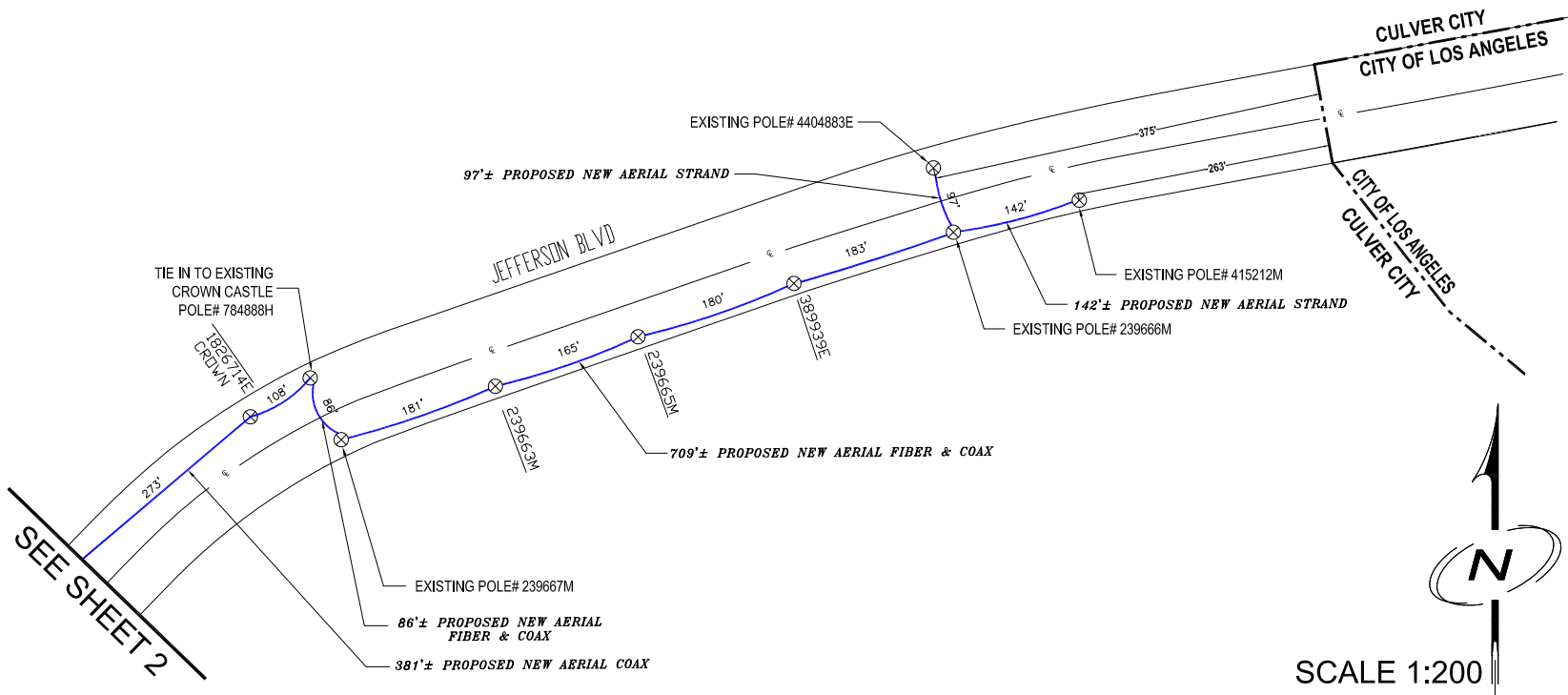
PLACE AERIAL COAX BEGINNING AT EX. POLE #796115E, APPROX. 172' NORTH OF DUQUESNE AVE ON LUCERNE AVE. AERIAL COAX WILL HEAD EAST ACROSS LUCERNE AVE TOWARDS JEFFERSON BLVD WITHIN UTILITY EASEMENT. AERIAL COAX WILL CONTINUE NORTHWEST ALONG JEFFERSON WITHIN PUBLIC ROW (SEE SHEET 3).

SYSTEM EXHIBIT

SHEET NO.
2 OF 5

LOCATION 1

PROP. AERIAL



BILL OF MATERIALS

| NO. | MATERIAL | QUANTITY | FOOTAGE |
|-----|-------------------------------|----------|---------|
| 1 | AERIAL FIBER (CULVER CITY RW) | - | 795'± |
| 2 | AERIAL COAX (CULVER CITY RW) | - | 1,176'± |
| | | | |
| | | | |
| | | | |
| | | | |
| | | | |
| | | | |
| | | | |
| | | | |


CROWN CASTLE

DESIGNED BY.....



290 CORPORATE TERRACE CIRCLE
STE. 200, GORDON, CA 92879

WWW.KBENG.NET

TEL. 951-808-9501
FAX. 951-808-9518

CONSULTANT ENGINEER INFORMATION



PROJECT NO. _____
PLAN NO. _____

PROJECT NAME:

SANTA MONICA EAST

LOCATION:

JEFFERSON BLVD N/O DUQUESNE AVE

PROJECT DESCRIPTION:

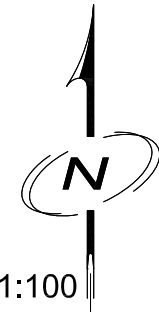
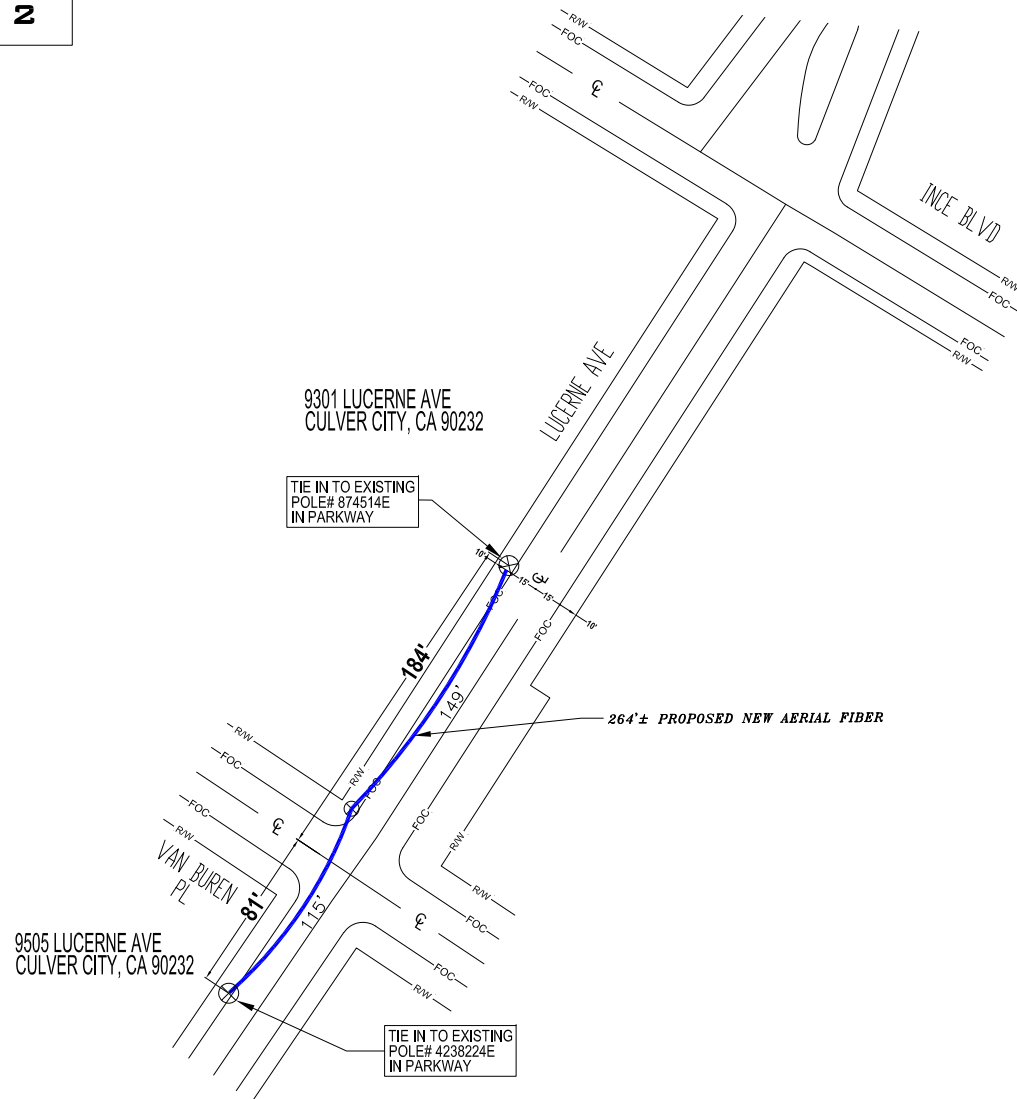
CONTINUE AERIAL EAST ALONG JEFFERSON BLVD TO EX POLE 784888H. FROM EX POLE 784888H CROSS TO EX POLE 239667M ON THE SOUTH OF JEFFERSON BLVD.
PLACE 144 COUNT AERIAL FIBER & 3/4" COAX CONTINUING FROM EX POLE 239667M ALONG JEFFERSON BLVD TO EX POLE 239666M. FROM EX POLE 239666M PLACE 1/4" STRAND TO EX. POLE 415212M APPROX 142' EAST ALONG JEFFERSON BLVD AND TO EX POLE 4404883E APPROX 97' HEADING NORTH ACROSS THE STREET.

SYSTEM EXHIBIT

SHEET NO.
3 OF 5

LOCATION 2

PROP. AERIAL



SCALE 1:100

BILL OF MATERIALS

| NO. | MATERIAL | QUANTITY | FOOTAGE |
|-----|-------------------------------|----------|---------|
| 1 | AERIAL FIBER (CULVER CITY RW) | — | 264' ± |
| | | | |
| | | | |
| | | | |
| | | | |
| | | | |
| | | | |
| | | | |
| | | | |
| | | | |

CROWN CASTLE

DESIGNED BY.....

290 CORPORATE TERRACE CIRCLE
STE. 200, GORDON, CA 92879

WWW.KBENG.NET

TEL. 951-808-9501
FAX. 951-808-9518

CONSULTANT ENGINEER INFORMATION

REGISTERED PROFESSIONAL ENGINEER

GIL ZULUETA MENDOZA

No. 53454
Expires June 30, 2019

CIVIL

STATE OF CALIFORNIA

PROJECT NO. _____
PLAN NO. _____

PROJECT NAME:
SANTA MONICA EAST

LOCATION:
LUCERNE AVE & VAN BUREN PL

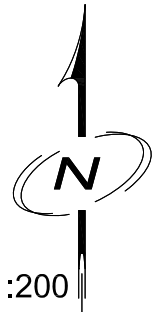
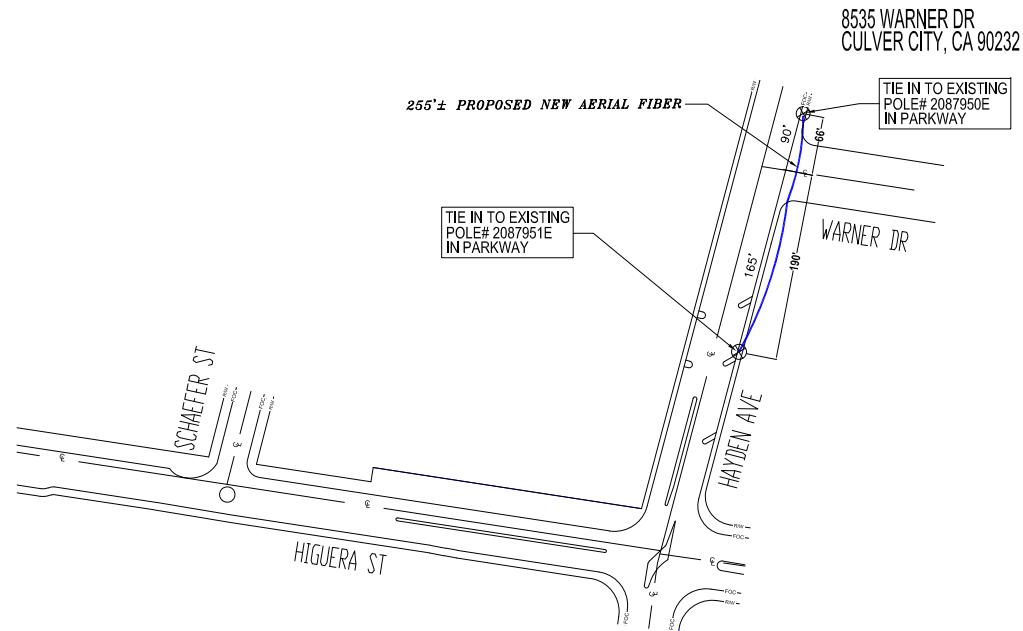
PROJECT DESCRIPTION:
PLACE 432 COUNT FIBER NORTHEAST ALONG LUCERNE AVE FOR TWO SPANS, BEGINNING AT EX. POLE #4238224E SOUTH OF VAN BUREN PL, TO EX. POLE #8874514E NORTH OF VAN BUREN PL.

SYSTEM EXHIBIT

SHEET NO.
4 OF 5

LOCATION 3

PROP. AERIAL



SCALE 1:200

BILL OF MATERIALS

| NO. | MATERIAL | QUANTITY | FOOTAGE |
|-----|-------------------------------|----------|---------|
| 1 | AERIAL FIBER (CULVER CITY RW) | — | 255' ± |
| | | | |
| | | | |
| | | | |
| | | | |
| | | | |
| | | | |
| | | | |
| | | | |
| | | | |



CROWN CASTLE

DESIGNED BY.....



290 CORPORATE TERRACE CIRCLE
STE. 200, GORDON, CA 92879

WWW.KBENG.NET

TEL. 951-808-9501
FAX. 951-808-9518

CONSULTANT ENGINEER INFORMATION



PROJECT NO. _____
PLAN NO. _____

PROJECT NAME:

SANTA MONICA EAST

LOCATION:

HAYDEN AVE & WARNER DR

PROJECT DESCRIPTION:

PLACE 432 COUNT AERIAL FIBER ALONG HAYDEN AVE FROM EX. POLE # 2087951E NORTH OF HIGUERA ST, TO EX POLE #2087950E NORTH OF WARNER DR.

SYSTEM EXHIBIT

SHEET NO.
5 OF 5