

**RESOLUTION NO. 2018-R \_\_\_\_\_**

A RESOLUTION OF THE CITY COUNCIL OF THE CITY OF  
CULVER CITY, CALIFORNIA, APPROVING AN  
ENCROACHMENT AGREEMENT WITH TIME WARNER  
CABLE.

WHEREAS, Time Warner Cable is the holder of a state video franchise,  
issued pursuant to the Digital Infrastructure and Video Competition Act of 2006, authorizing  
it to provide cable video services in Culver City;

WHEREAS, Time Warner Cable's state video franchise also authorizes it to  
install conduit, fiber optic cables and related telecommunication facilities within municipal  
rights-of-way;

WHEREAS, Time Warner Cable has applied for a permit to encroach upon  
Culver City's public rights-of-way in order to install conduit, fiber optic cables and related  
telecommunication facilities;

WHEREAS, the City of Culver City is authorized to regulate the time, place  
and manner of the placement of telecommunication or video facilities in its public rights-of-  
way;

WHEREAS, the City of Culver City regulates the time, place and manner of  
the placement of telecommunication or video facilities in its public rights-of-way through the  
issuance of encroachment permits and encroachment agreements;

WHEREAS, Section 11.20.025(D) of the Culver City Municipal Code provides  
that issuance of encroachment permits is subject to approval by the Culver City City  
Council.

NOW, THEREFORE, the City Council of the City of Culver City, California,  
DOES HEREBY RESOLVE, as follows:

1. The encroachment permit application submitted by Time Warner Cable for its project for 4975 Overland Avenue, as depicted in the attached Exhibits A, B & C, is hereby approved.

2. The City Manager is authorized to execute the related encroachment agreement on behalf of the City of Culver City.


APPROVED and ADOPTED this \_\_\_\_\_ day of \_\_\_\_\_ 2018.

THOMAS AUJERO MAYOR, Mayor  
City of Culver City, California

**ATTEST:**

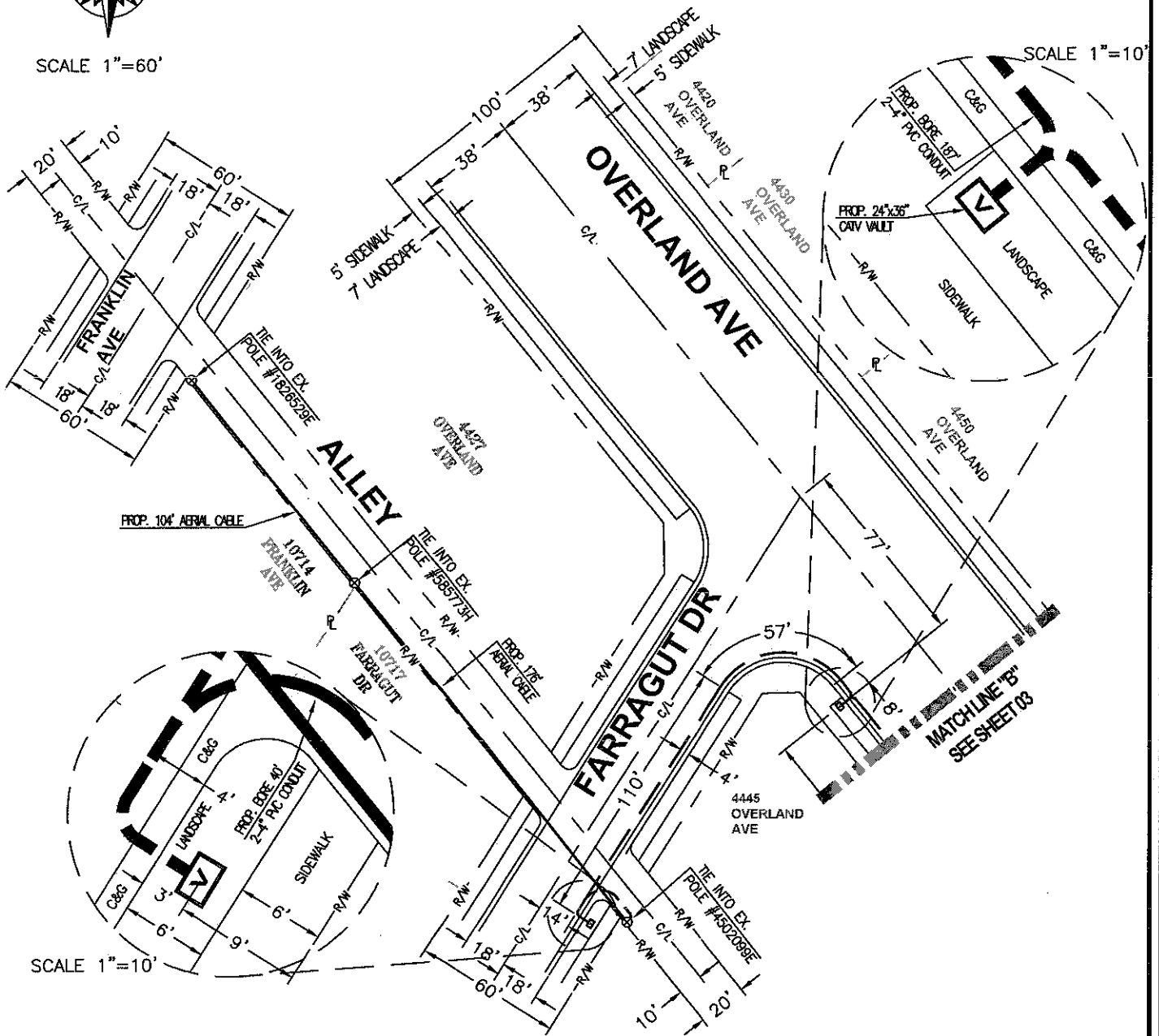
APPROVED AS TO FORM:

**JEREMY GREEN**  
City Clerk

  
CAROL A. SCHWAB  
City Attorney



SCALE 1"=60'



### BILL OF MATERIALS

NO.	MATERIAL	QTY	FOOTAGE
1	PROP. 24"x36" CATV VAULT	2	
2	2-4" PVC CONDUIT		227'
3	AERIAL FIBER CABLE		280'
4			

### LEGEND

- PROPOSED BORE
- ☐ PROPOSED CATV VAULT
- ⊗ UTILITY POLE

Charter  
**Spectrum**

6357 ARIZONA CIRCLE  
LOS ANGELES, CA 90045

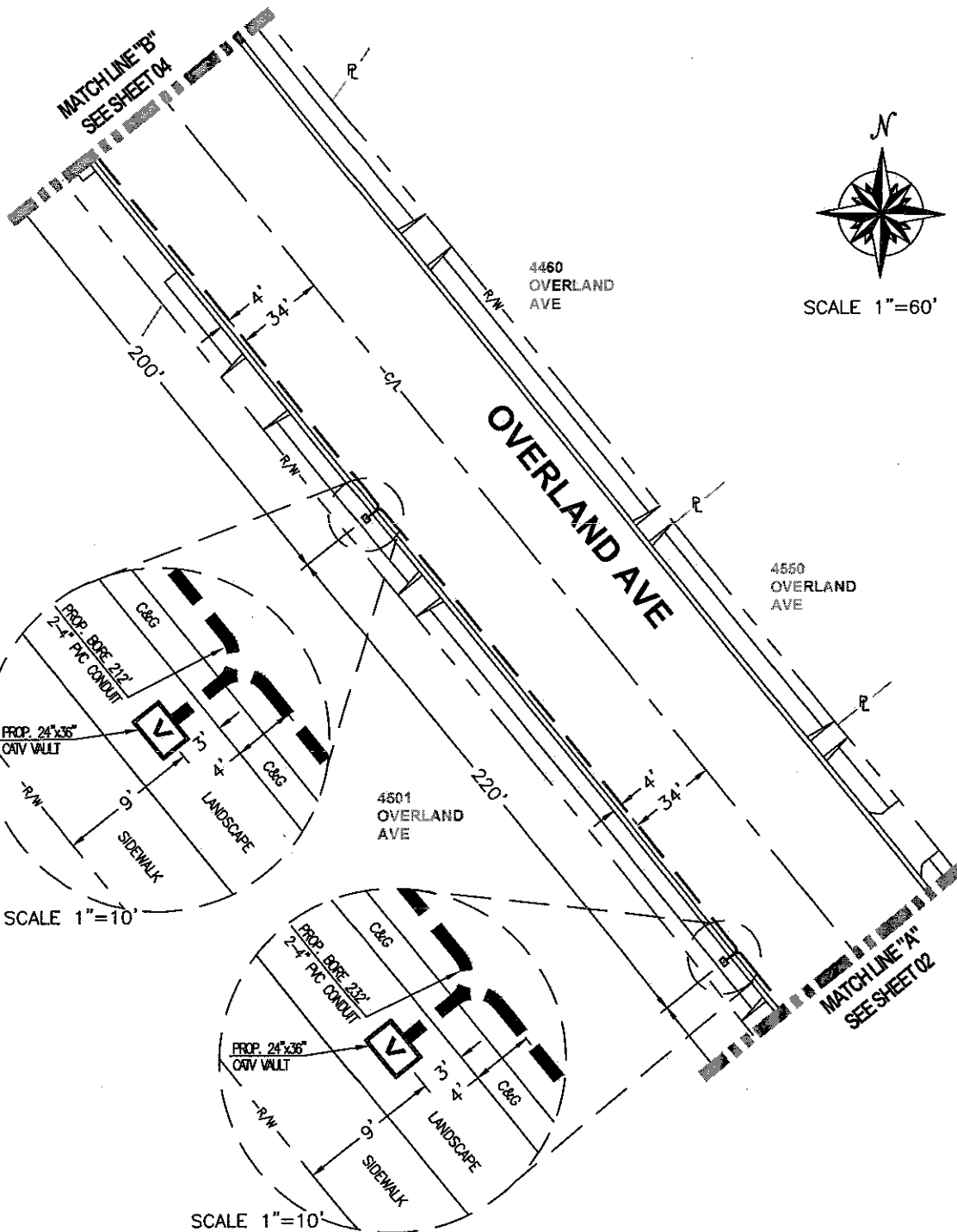


1250 CORONA POINTE SUITE 308 CORONA CA 92879  
OFFICE: 951.273.1814 FAX: 951.273.1818

ADDRESS/PROJECT:  
4975 OVERLAND AVE  
CULVER CITY, CA 90230

SYSTEM EXHIBIT

SHEET 4 OF 4



SCALE 1"=60'

### BILL OF MATERIALS

NO.	MATERIAL	QTY	FOOTAGE
1	PROP. 24"x36" CATV VAULT	2	
2	2-4" PVC CONDUIT		444'
3			
4			

### LEGEND

- PROPOSED BORE
- ☑ PROPOSED CATV VAULT

Charter  
Spectrum

6367 ARIZONA CIRCLE  
LOS ANGELES, CA 90045

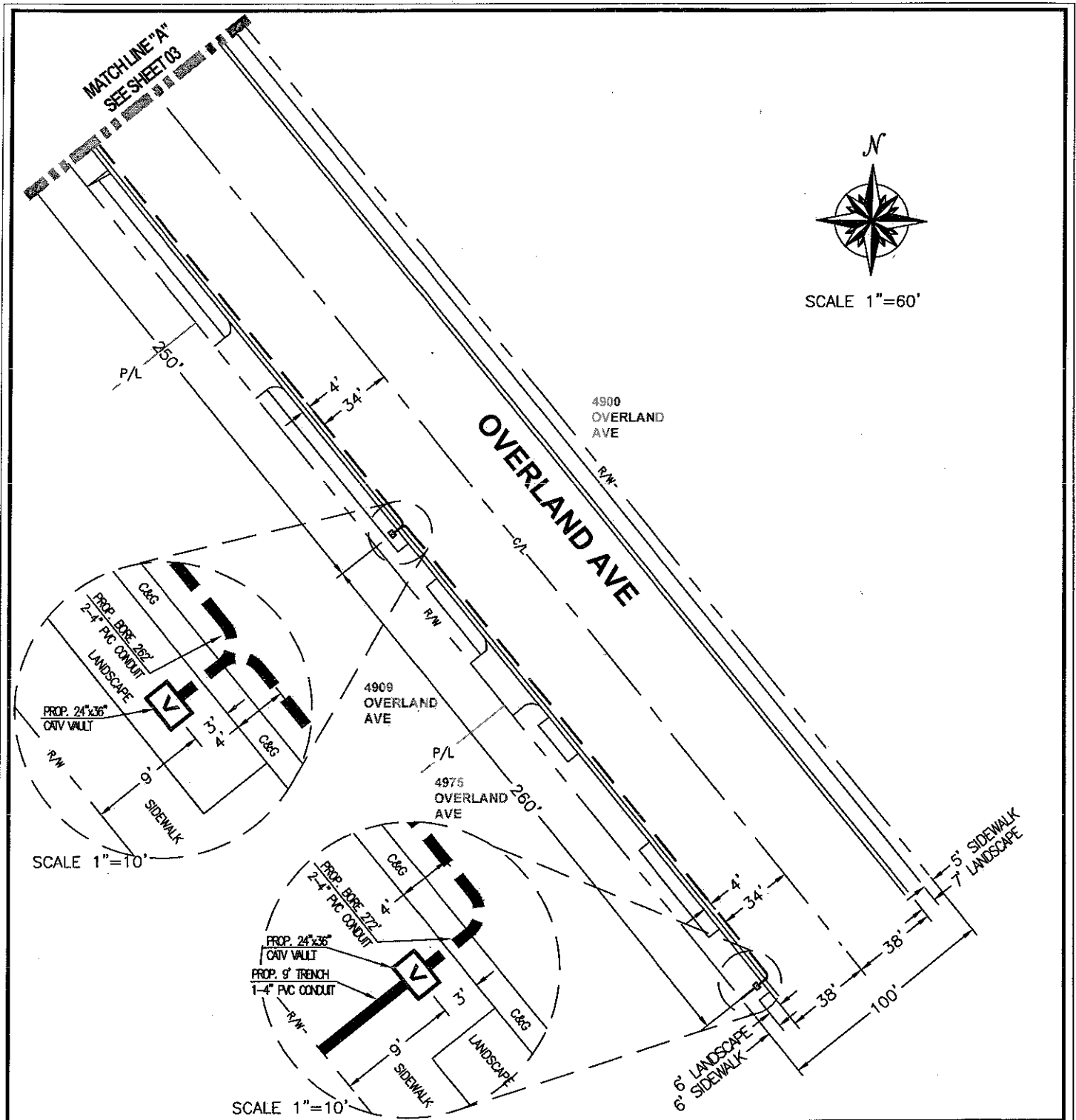


1250 CORONA POINTE SUITE 308 CORONA CA 92879  
OFFICE: 951.273.1814 FAX: 951.273.1818

ADDRESS/PROJECT:  
4975 OVERLAND AVE  
CULVER CITY, CA 90230

SYSTEM EXHIBIT

SHEET 3 OF 4



#### BILL OF MATERIALS

NO.	MATERIAL	QTY	FOOTAGE
1	PROP. 24"x36" CATV VAULT	2	
2	2-4" PVC CONDUIT		534'
3	1-4" PVC CONDUIT		9'
4			

#### LEGEND

- PROPOSED BORE
- PROPOSED TRENCH
- ☐ PROPOSED CATV VAULT

Charter  
**Spectrum**

6367 ARIZONA CIRCLE  
LOS ANGELES, CA 90045



1250 CORONA POINTE SUITE 308 CORONA CA 92879  
OFFICE: 951.273.1814 FAX: 951.273.1818

ADDRESS/PROJECT:  
4975 OVERLAND AVE  
CULVER CITY, CA 90230

SYSTEM EXHIBIT

SHEET 2 OF 4