



## **Culver City Active Transportation Program Cycle IV Grant Application**

**Public Works Department**

# Active Transportation Grant

- Administered by Caltrans
- Created by Federal legislation and funded through the State, for active transportation infrastructure, non-infrastructure, and planning projects.
- Consolidates several active transportation programs, including the Safe Routes Program, into one Active Transportation Program.

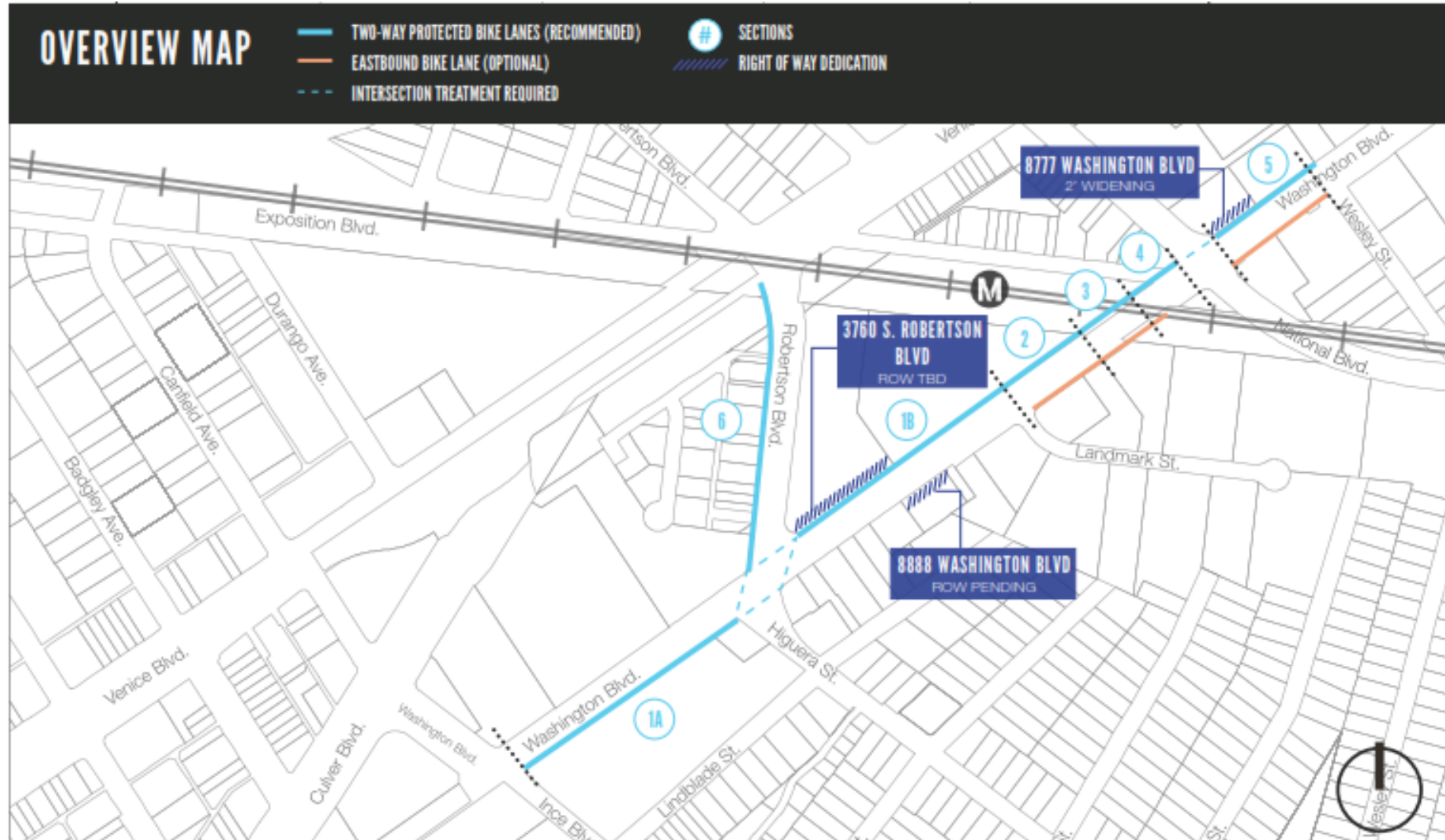
# ATP Cycle 4

- 4 year Cycle. Previously two year cycle.
- New Project categories:
  - Large Infrastructure (and Combo I/NI) : Above 7.5 million
  - Medium Infrastructure (and Combo I/NI) : 7.5 – 1.5 million
  - Small Infrastructure (and Combo I/NI) : Below 1.5 million
  - Non-Infrastructure
  - Plan
- Higher emphasis on disadvantaged communities.

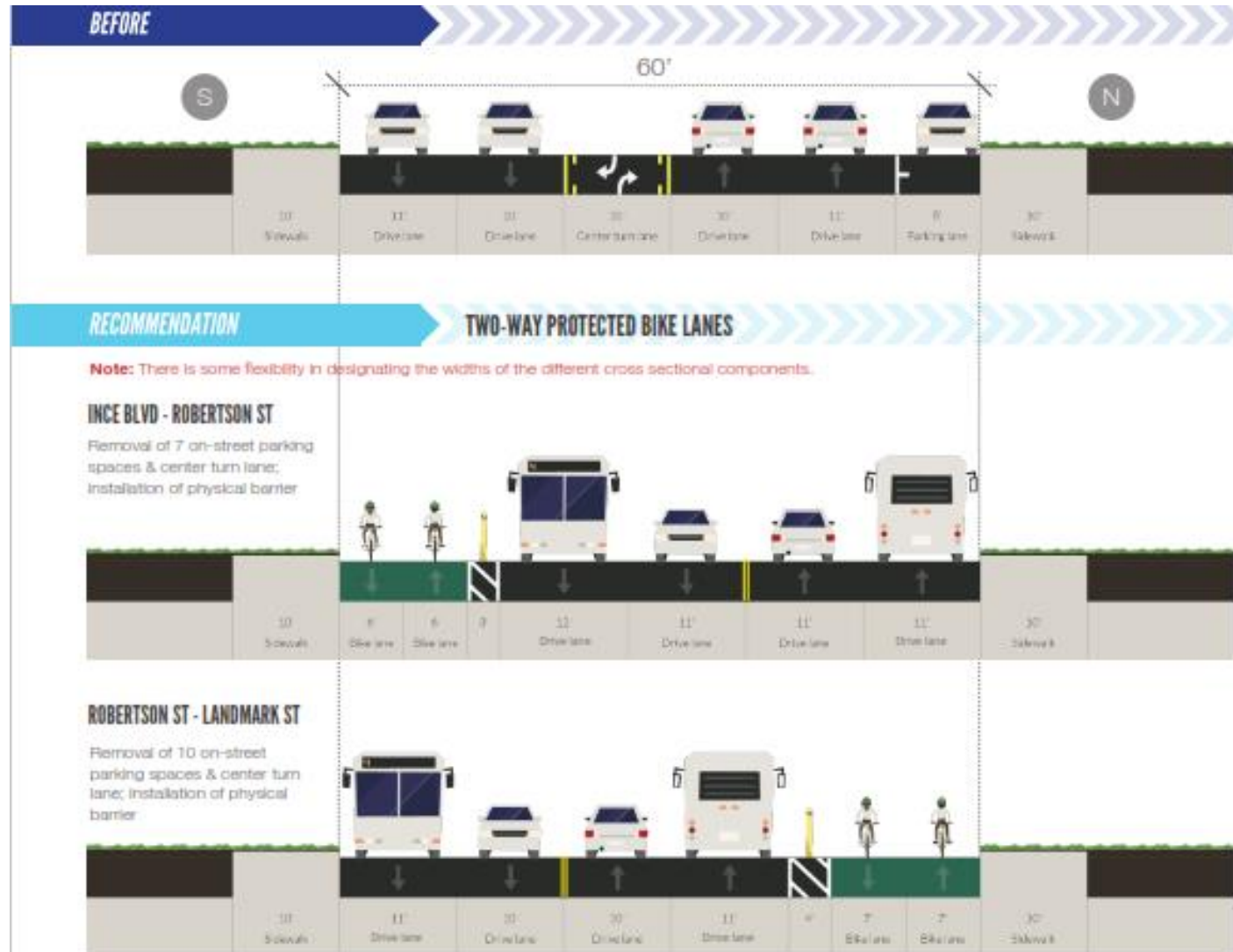
# Existing Plans+Projects in Downtown

- Expo to Downtown Connector Feasibility Study
- Transit Orientated Development (TOD) District Visioning Study
- 2010 Bicycle and Pedestrian Plan – 90% complete
- Bicycle and Pedestrian Action Plan – Opportunity corridor
- 2017 CicLAvia Go Human Demonstration

# Conceptual Plan- Expo to Downtown Connector



# Conceptual Plan- Expo to Downtown Connector



# Existing Plans+Projects in Downtown

- Expo to Downtown Connector Feasibility Study
- Transit Orientated Development (TOD) District Visioning Study
- 2010 Bicycle and Pedestrian Plan – 90% complete
- Bicycle and Pedestrian Action Plan – Opportunity corridor
- 2017 CicLAvia Go Human Demonstration



# Conceptual Plan- Expo to Downtown Connector



*Photos from March 26th Demonstration Project*



# Existing Plans+Projects in Downtown

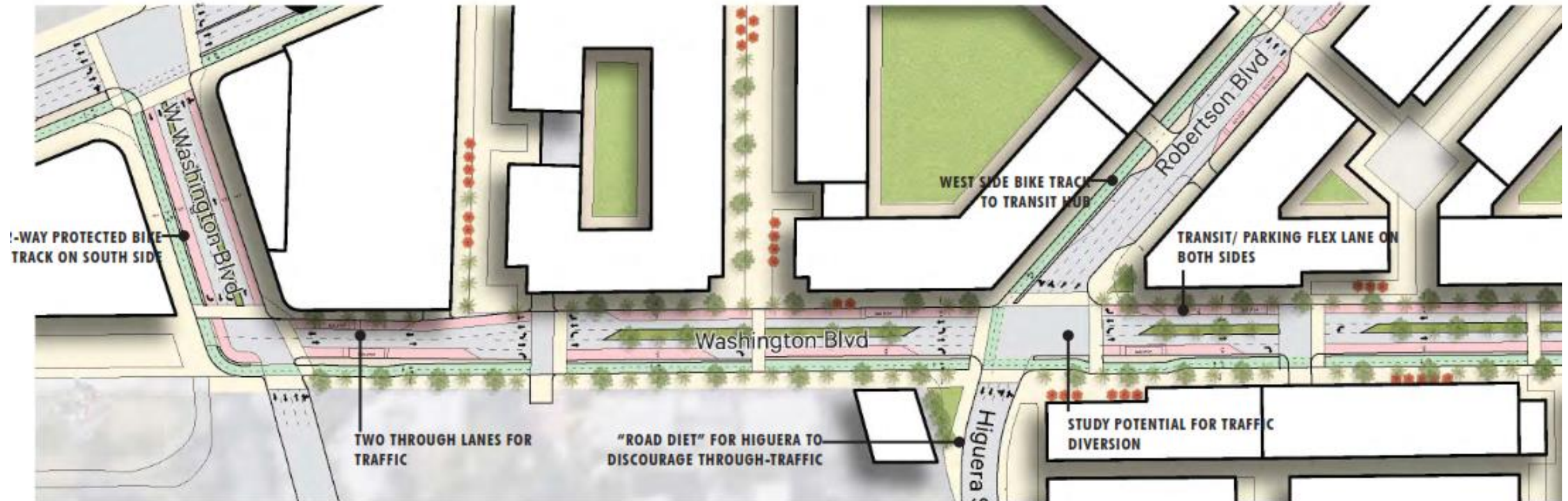
- Expo to Downtown Connector Feasibility Study
- Transit Orientated Development (TOD) District Visioning Study
- 2010 Bicycle and Pedestrian Plan – 90% complete
- Bicycle and Pedestrian Action Plan – Opportunity corridor
- 2017 CicLAvia Go Human Demonstration

# Conceptual Plan- TOD Visioning Study



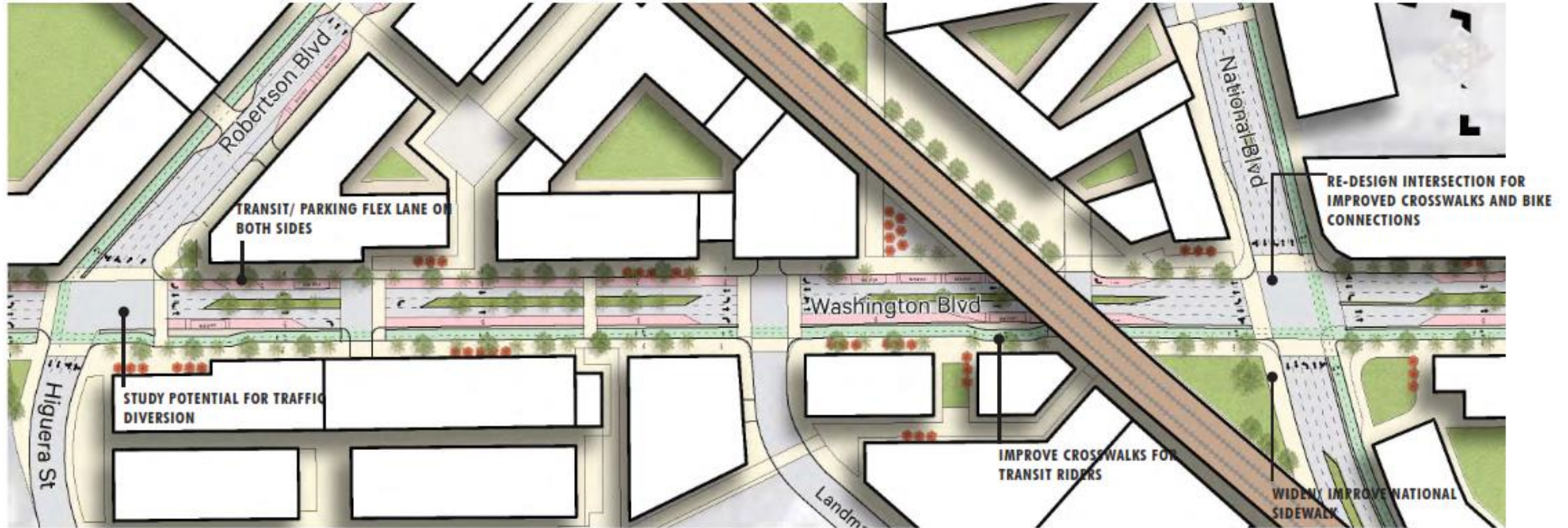
Illustrative Site Plan - Washington Boulevard as the Culver City TOD District's "Main Street"

# Conceptual Plan- TOD Visioning Study

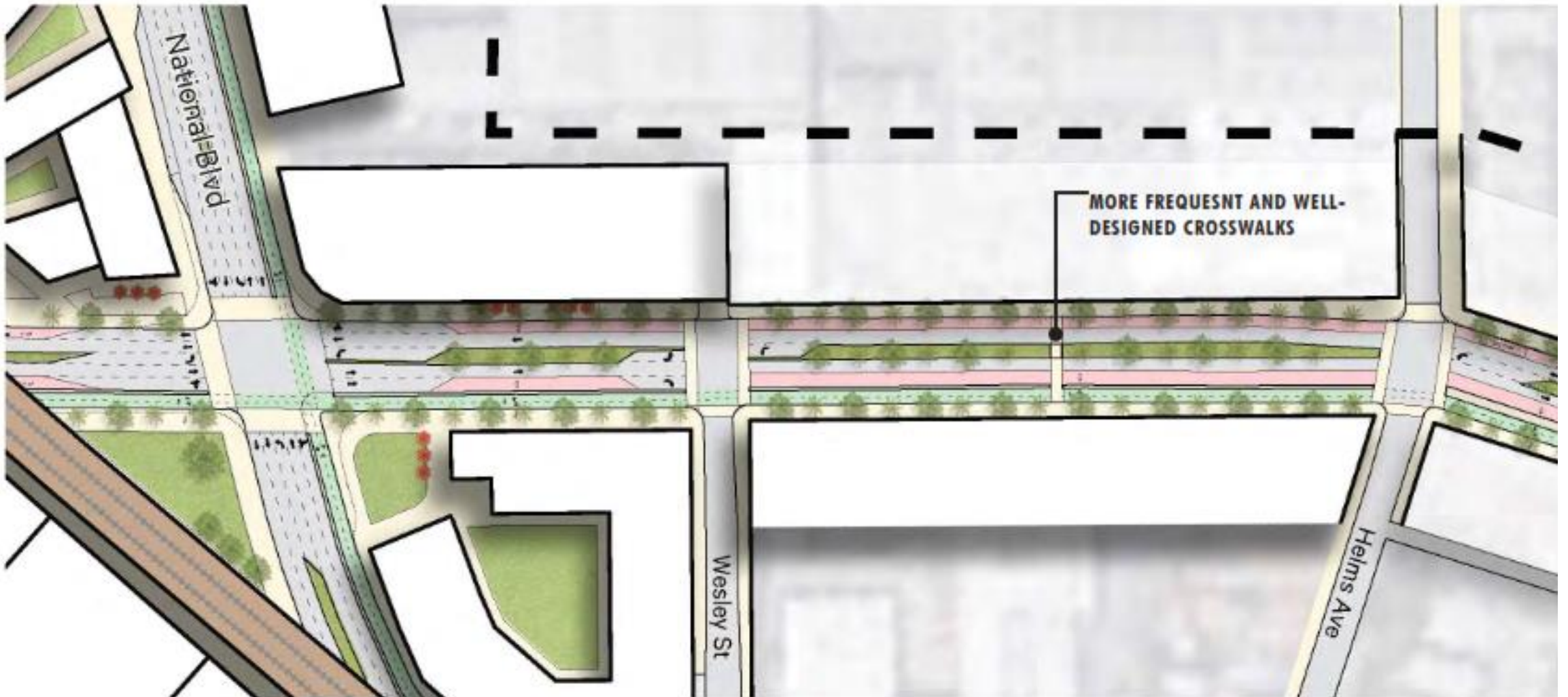




# Conceptual Plan- TOD Visioning Study



# Conceptual Plan- TOD Visioning Study



# Why now?

- Developments in construction (TOD)
- ATP's new 4 year grant cycle
- Shared Mobility + Safety
- Connecting major business, retail and entertainment districts to the Metro Expo Downtown Station
- Bicycle Network gaps



# Conceptual Plan

- Street-grade (2-way) cycle track with 3ft concrete curb barrier.

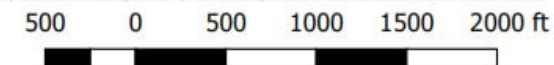


## CULVER CITY ATP CYCLE IV

### LEGEND

- METRO STATION
- EXPO LINE
- INTERSECTIONS
- PROJECT LIMITS

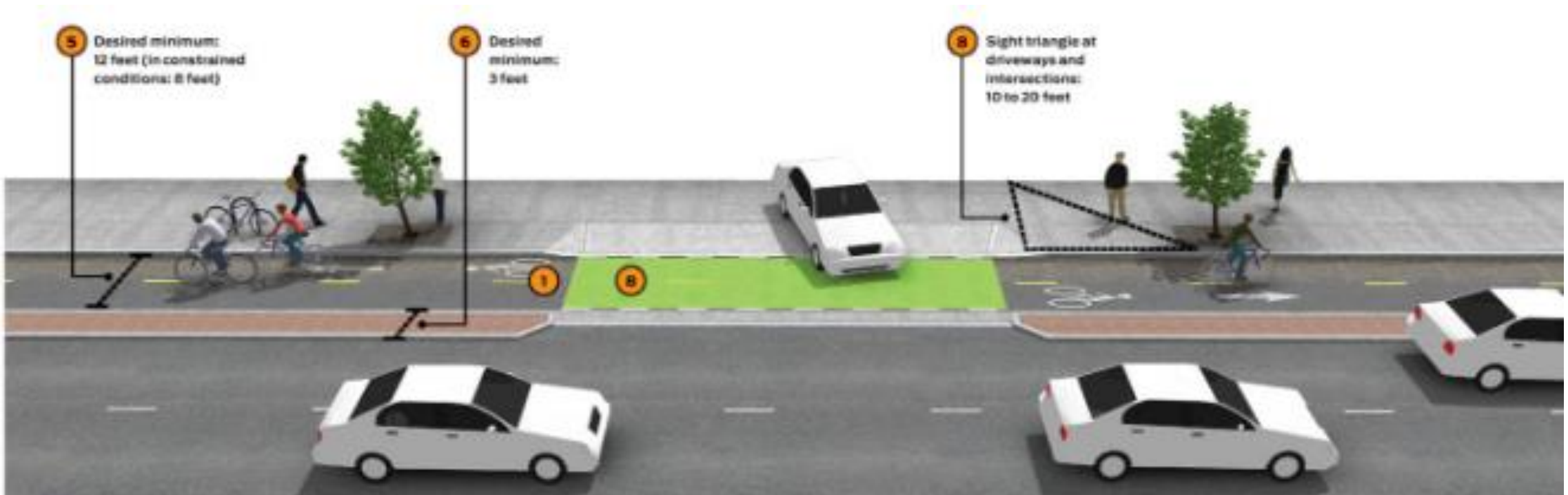
PROJECT LOCATION MAP



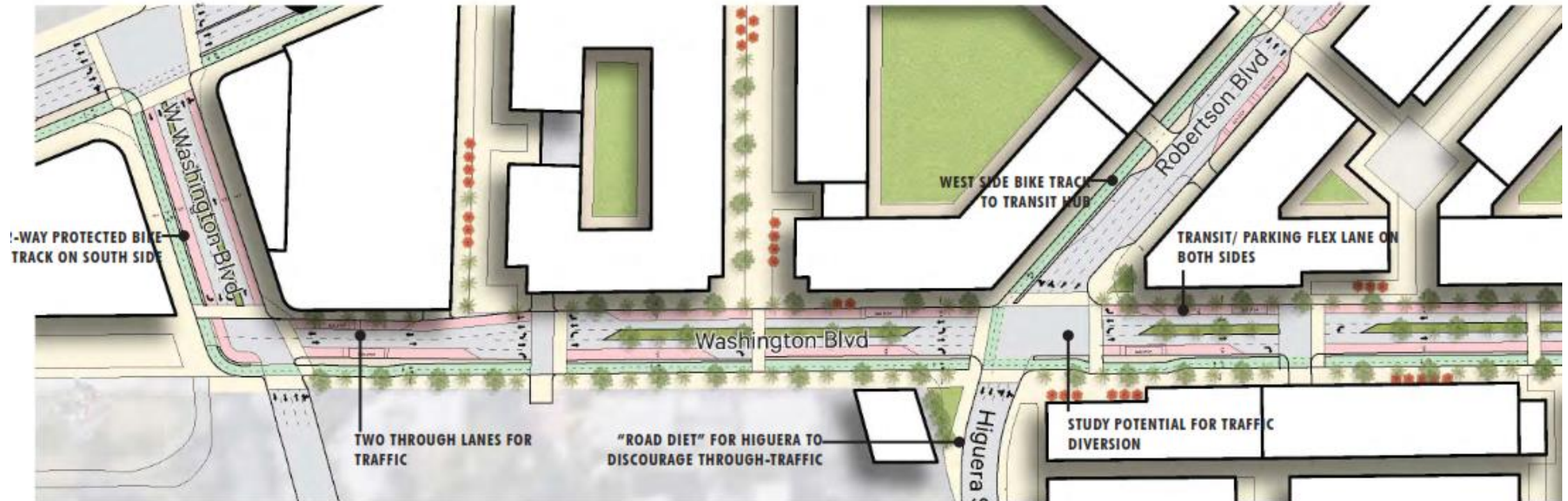


# Conceptual Plan

- Street-grade (2-way) cycle track with 3ft concrete curb barrier.

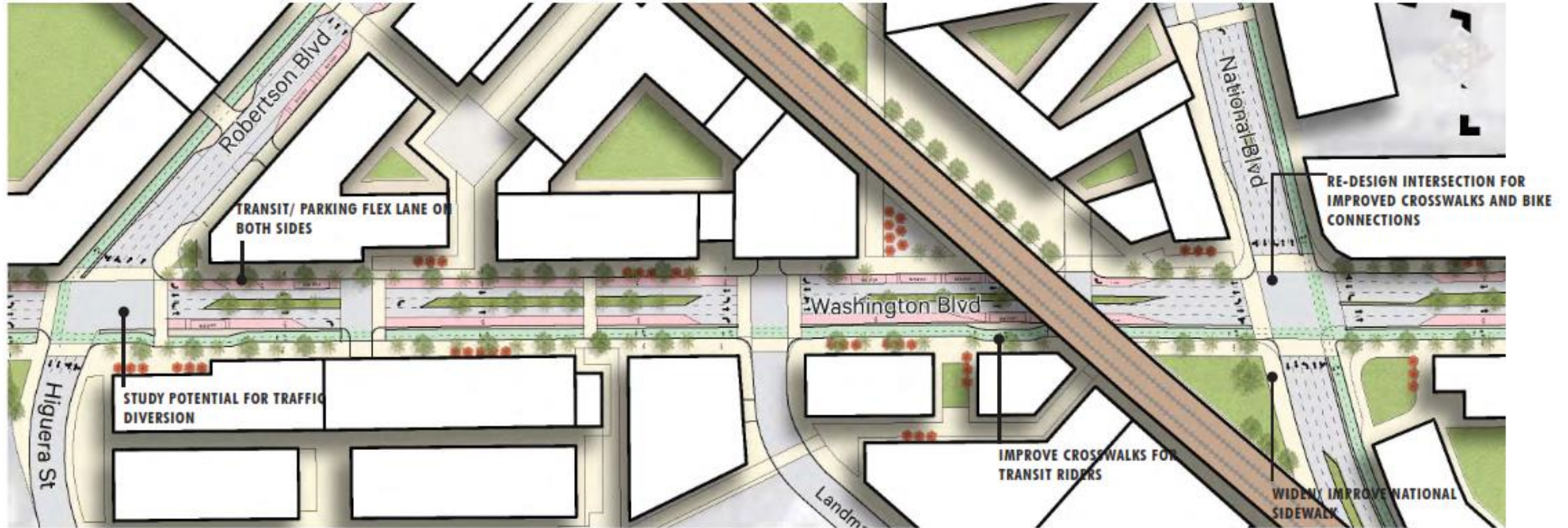


# Conceptual Plan- TOD Visioning Study

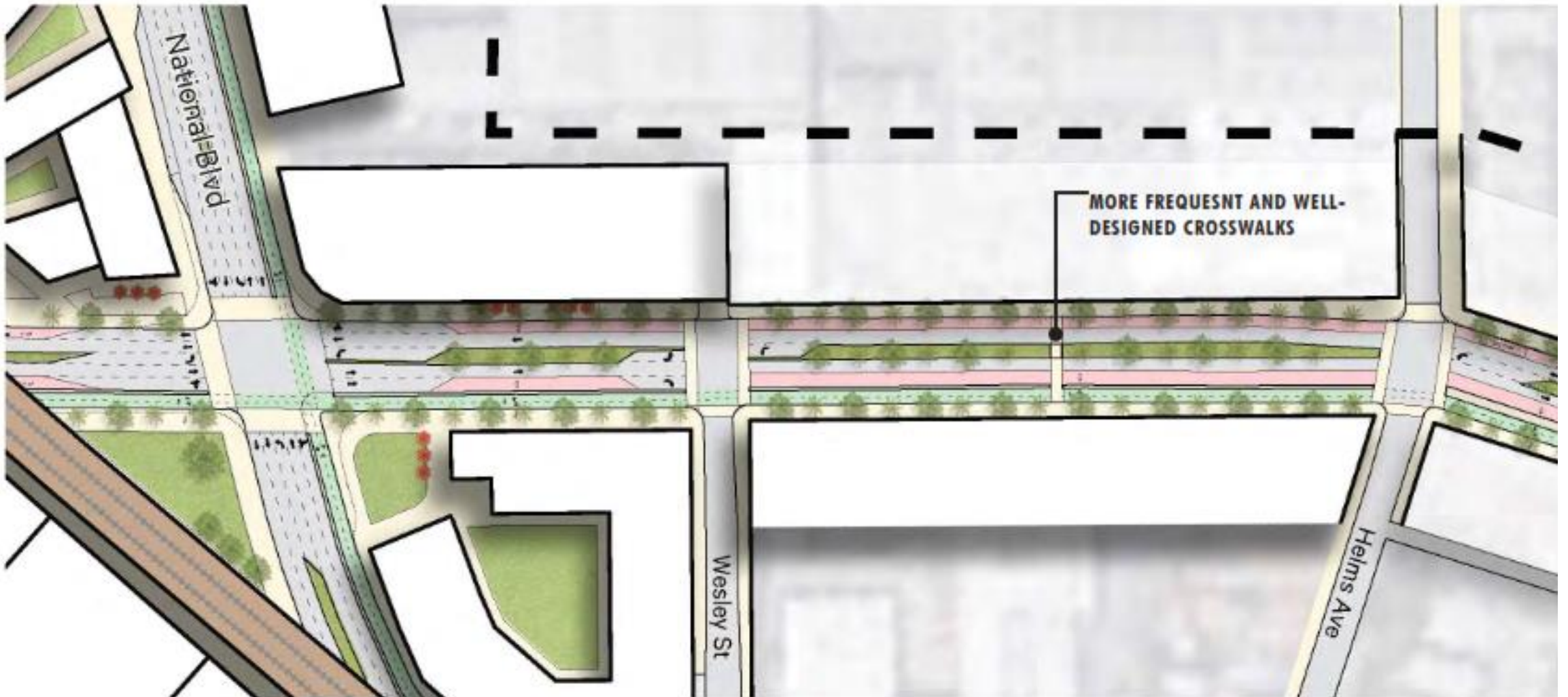




# Conceptual Plan- TOD Visioning Study

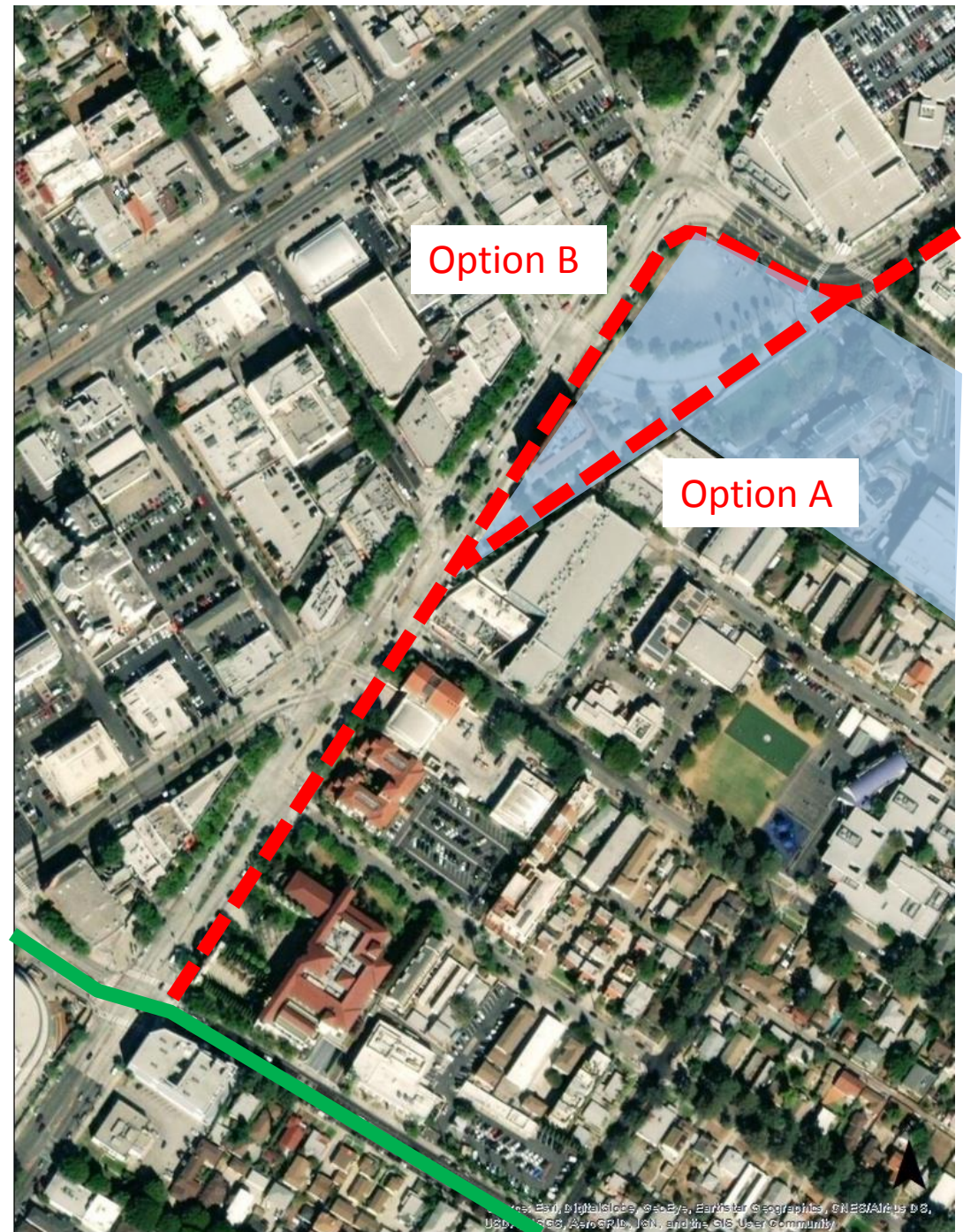


# Conceptual Plan- TOD Visioning Study





# Washington-Culver Intersection



- Town Plaza + Parcel B



- Proposed Infrastructure



- Duquesne Ave. Bicycle Lanes



# Washington-Culver Intersection OPTION A



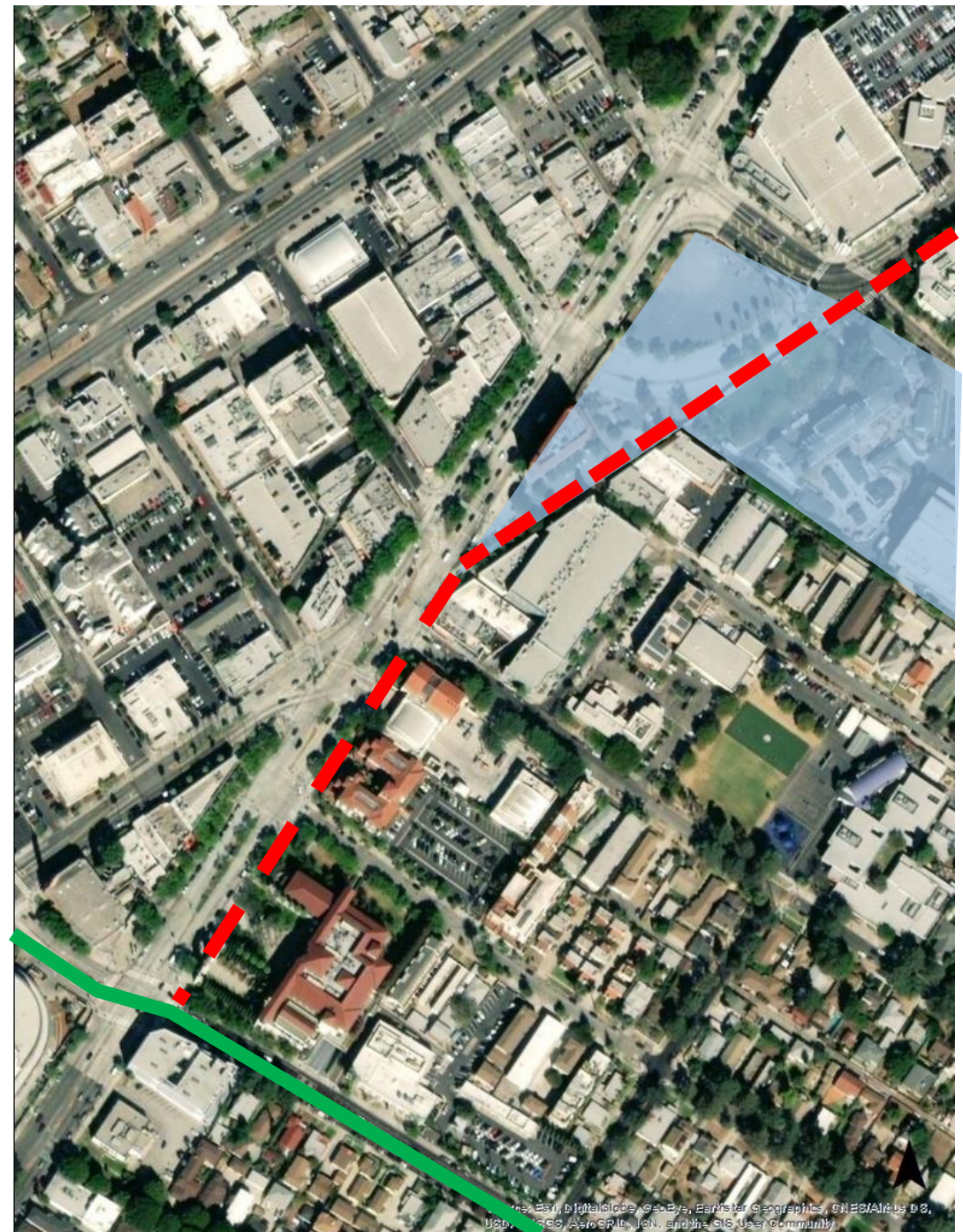
- Town Plaza + Parcel B



- Option A

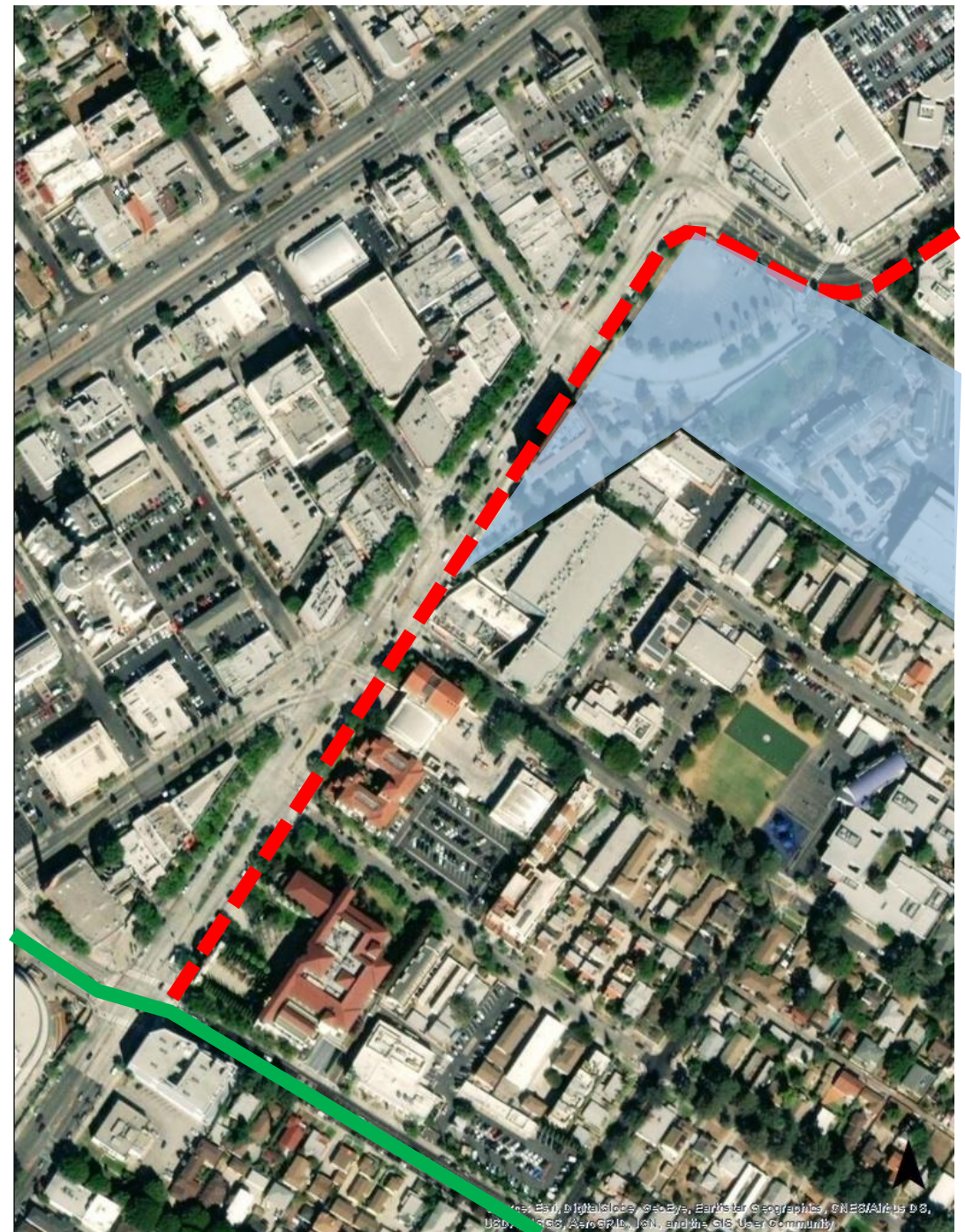


- Duquesne Ave. Bicycle Lanes





# Washington-Culver Intersection



- Town Plaza + Parcel B



- Option B



- Duquesne Ave. Bicycle Lanes