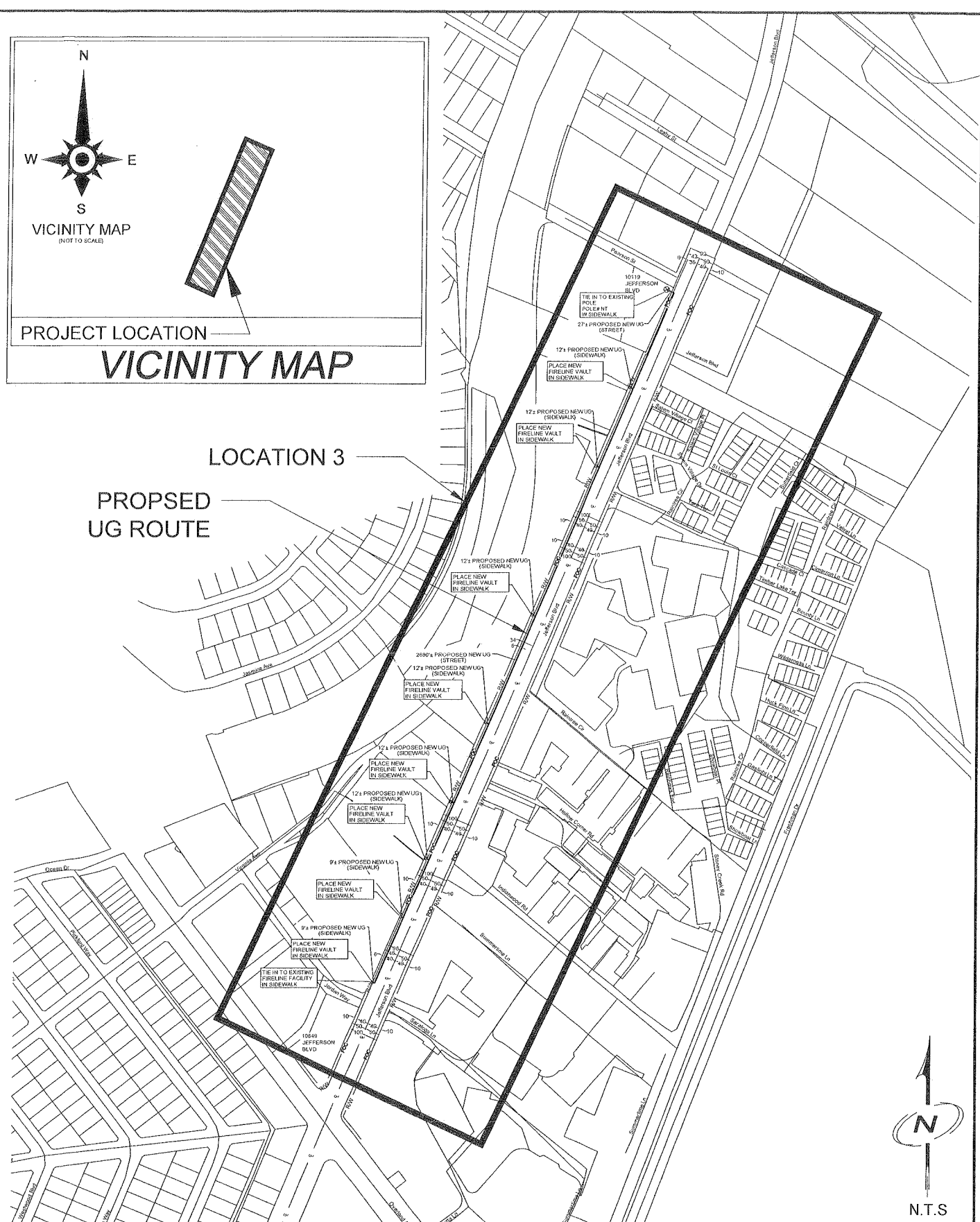
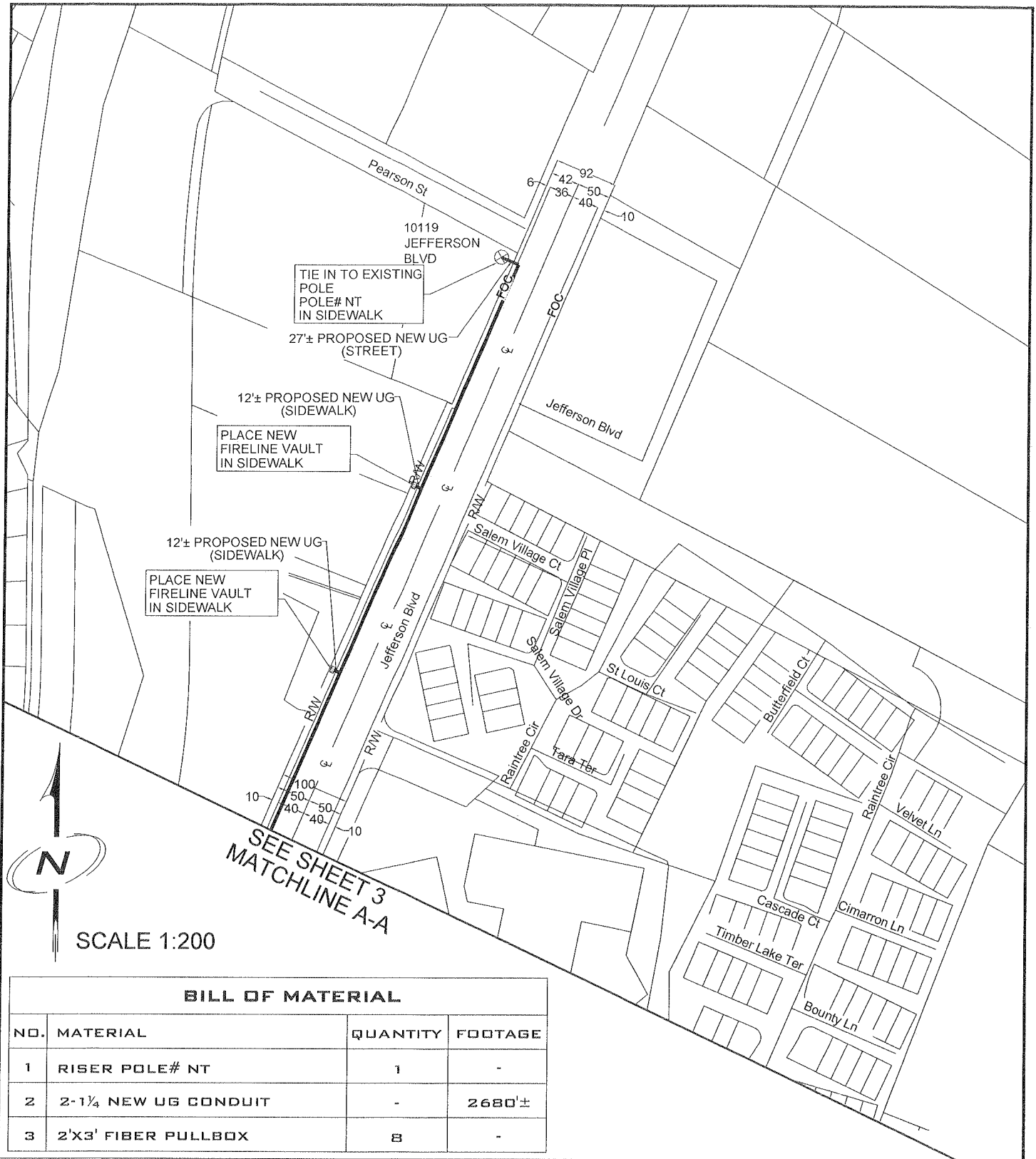


PROPOSED
UG ROUTE



N.T.S



FIRELINE BROADBAND

DESIGNED BY.....

KB ENGINEERING

290 CORPORATE TERRACE CIRCLE
STE. 200, CORONA, CA 92879

WWW.KBENG.NET

TEL. 951-808-9501
FAX. 951-808-9518

CONSULTANT ENGINEER INFORMATION

REGISTERED PROFESSIONAL ENGINEER
GIL ZULUETA MENDOZA
No. 53454
Expires June 30, 2019
CIVIL
STATE OF CALIFORNIA

PROJECT NO. _____
PLAN NO. _____

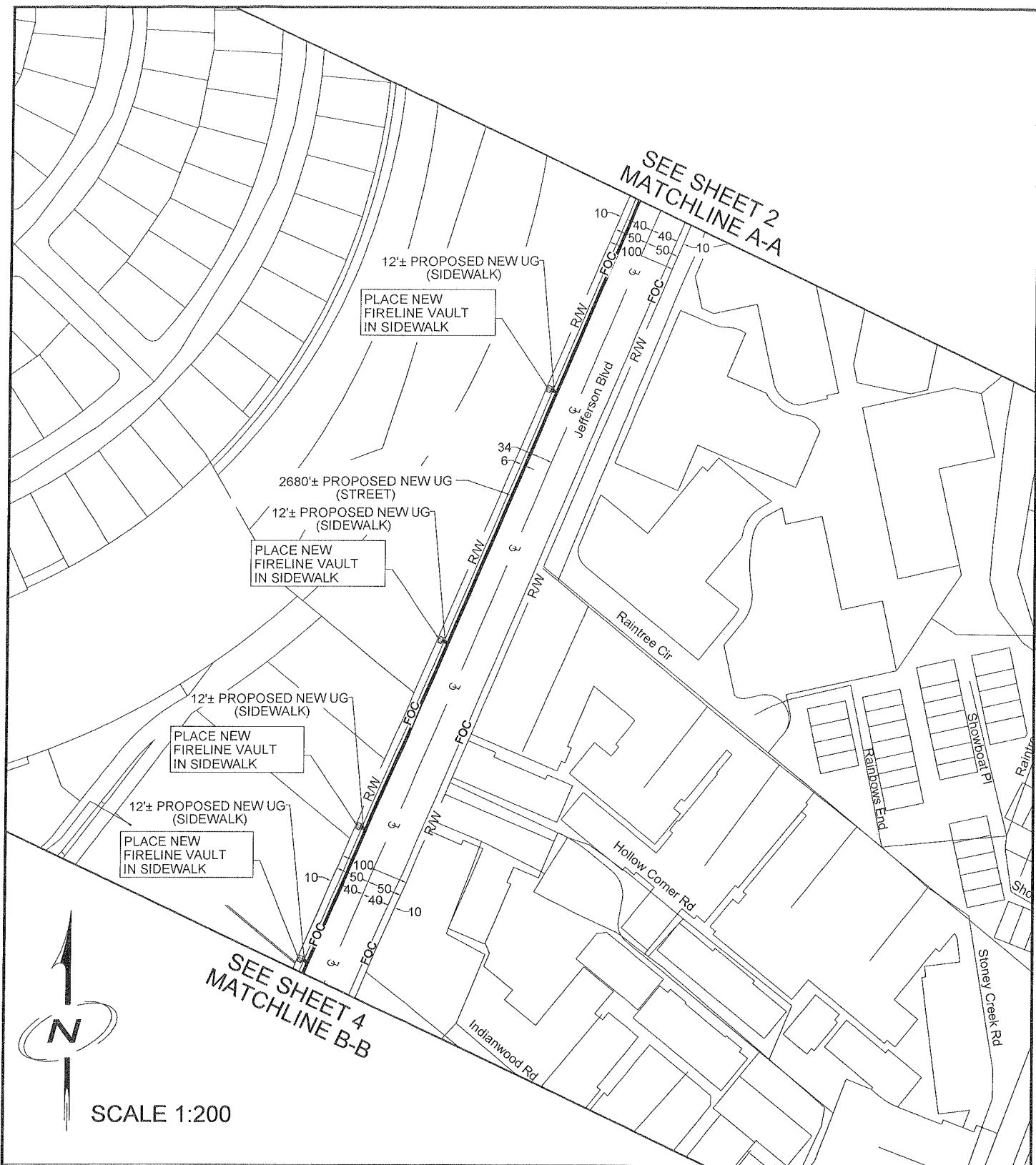
PROJECT NAME:
965-DHO14-B01-GUL

LOCATION:
W JEFFERSON BLVD FROM PEARSON ST TO JORDAN WAY

PROJECT DESCRIPTION:
PROPOSED ROUTE WILL START AT THE SOUTH EAST CORNER OF PEARSON ST RISING DOWN TO EXISTING POLE. THE ROUTE WILL THEN TRAVEL SOUTH ON W JEFFERSON BLVD TO JORDAN WAY. THE PATH WILL BE SERVICING 8 LOCATIONS WHICH IN THESE LOCATIONS, FIRELINE WILL BE PROPOSING VAULTS IN THE SIDEWALK/PARKWAY. THE PROPOSED ROUTE WILL BE APPROXIMATELY 2,680[±].

SYSTEM EXHIBIT

SHEET NO.
2 OF 4



SCALE 1:200

FIRELINE
BROADBAND

DESIGNED BY.....

KB
ENGINEERING

290 CORPORATE TERRACE CIRCLE
STE. 200, CORONA, CA 92879

WWW.KBENG.NET

TEL. 951-808-9501
FAX. 951-808-9518

CONSULTANT ENGINEER
INFORMATION



PROJECT NO. _____
PLAN NO. _____

PROJECT NAME:

965-DHO14-B01-CUL

LOCATION:

W JEFFERSON BLVD FROM PEARSON ST TO JORDAN WAY

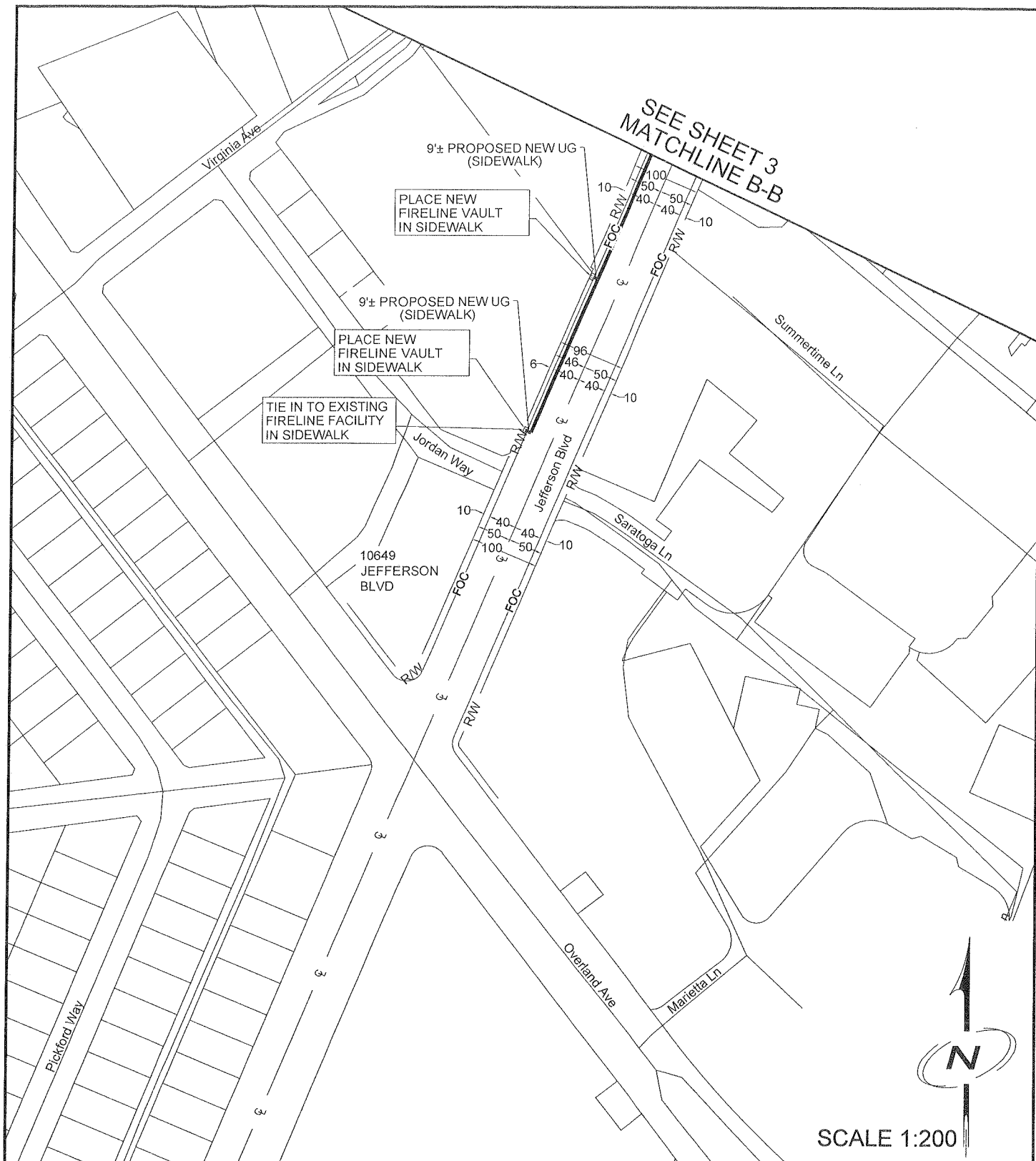
PROJECT DESCRIPTION:

PROPOSED ROUTE WILL START AT THE SOUTH EAST CORNER OF PEARSON ST RISING DOWN TO EXISTING POLE. THE ROUTE WILL THEN TRAVEL SOUTH ON W JEFFERSON BLVD TO JORDAN WAY. THE PATH WILL BE SERVICING 8 LOCATIONS WHICH IN THESE LOCATIONS, FIRELINE WILL BE PROPOSING VAULTS IN THE SIDEWALK/PARKWAY. THE PROPOSED ROUTE WILL BE APPROXIMATELY 2,680'±.

SYSTEM EXHIBIT

SHEET NO.

3 OF 4



FIRELINE
BROADBAND

DESIGNED BY.....

KB
ENGINEERING

290 CORPORATE TERRACE CIRCLE
STE. 200, CORDONA, CA 92879

WWW.KBENG.NET

TEL. 951-808-9501
FAX. 951-808-9518

CONSULTANT ENGINEER
INFORMATION



PROJECT NO. _____
PLAN NO. _____

PROJECT NAME:

965-DH014-B01-CUL

LOCATION:

W JEFFERSON BLVD FROM PEARSON ST TO JORDAN WAY

PROJECT DESCRIPTION:

PROPOSED ROUTE WILL START AT THE SOUTH EAST CORNER OF PEARSON ST RISING DOWN TO EXISTING POLE. THE ROUTE WILL THEN TRAVEL SOUTH ON W JEFFERSON BLVD TO JORDAN WAY. THE PATH WILL BE SERVICING 8 LOCATIONS WHICH IN THESE LOCATIONS, FIRELINE WILL BE PROPOSING VAULTS IN THE SIDEWALK/PARKWAY. THE PROPOSED ROUTE WILL BE APPROXIMATELY 2,680'±.

SYSTEM EXHIBIT

SHEET NO.

4 OF 4