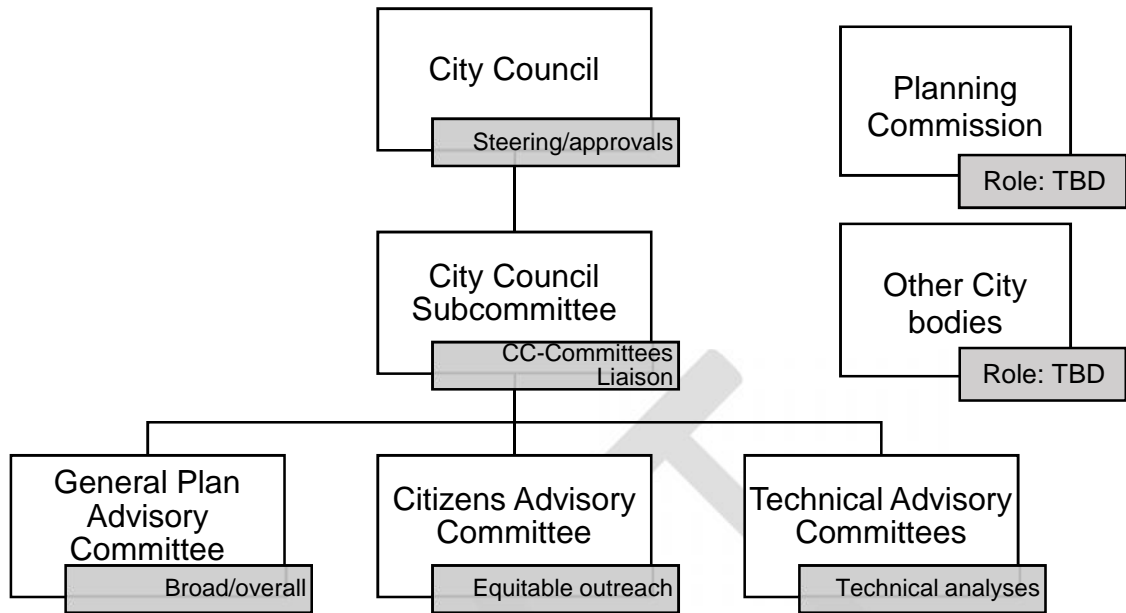


City of Culver City General Plan Update Advisory Bodies Framework and Details



| | City Council Subcommittee | General Plan Advisory Committee | Citizens Advisory Committee | Technical Advisory Committees |
|--------------------|---|--|---------------------------------------|--|
| Purpose | Advise broadly on process; liaise between Council and subcommittees | Advise broadly on process | Advise on public engagement | Advise on technical and policy matters |
| Term | Consultant kickoff → Plan draft | Consultant kickoff → Plan draft | Public kickoff → Plan draft | As needed |
| Frequency | Monthly or bimonthly | Monthly or bimonthly | Monthly or bimonthly | As needed |
| Members | 2 | 10-12, +facilitator | ±5 | ±5 per topic ±50 total |
| Composition | City Council members | Community members and representatives, topical experts, and City executive staff | Community members and representatives | Technical experts with topical relevance |