

CITY OF CULVER CITY
Community Development Department

California Testing & Inspections

1515 Compton Ave, 1st Floor
Los Angeles, CA 90021
T (213) 748-4900 | F (213) 748-4901
www.caltetinspection.com



REQUEST FOR PROPOSALS (RFP #1642)
GEOTECHNICAL PLAN CHECK SERVICES

April 27, 2017

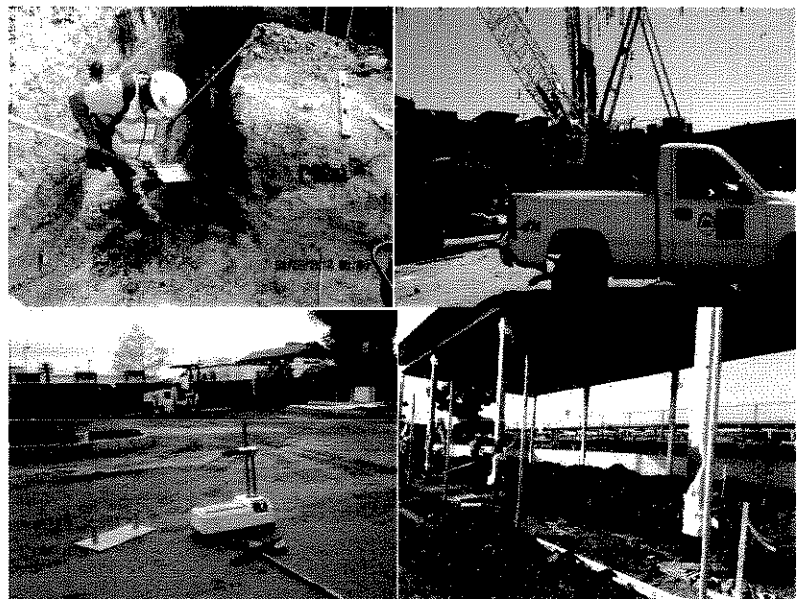


Table of Content

	Page
EXECUTIVE SUMMARY _____	1
COMPANY AND GENERAL INFORMATION _____	2
LETTER OF TRANSMITTAL _____	3
PRIMARY CONTACT _____	4
QUALIFICATIONS AND EXPERIENCE OF THE FIRM _____	5
ORGANIZATIONAL CHART _____	6
FIRM EXPERIENCE _____	7
QUALIFICATIONS AND EXPERIENCE OF PROPOSED TEAM _____	10
QUESTION/RESPONSE _____	16
FEES _____	17
REFERENCES _____	18
TYPICAL SCHEDULE _____	19

IV.C. EXECUTIVE SUMMARY

California Testing & Inspections, Inc. (CT&I) has assembled a team that commits to partner with the Culver City to consistently provide professional, reliable, and timely services, with the ability to overcome any unforeseen obstacles to execute their required duties efficiently and within project budgets. As importantly, our team members thoroughly understand the City's requirements and their role in delivering high quality project reviews, and utilizing our vast experience working in the areas of Geotechnical Engineering.

Our contribution on this contract is to assist Culver City by putting in place the best resources and strategies to quickly and effectively conduct design reviews, perform plan check, to ensure that projects reports are administered managed and completed, in compliance with City's code, contract requirements and government regulations. Our professional experience reviewing Design/Build and Design-Bid-Build project specifications will ensure that each project will not only comply with the regulatory construction codes, but also that there will be no discrepancies that generate change orders and or budget increases for public projects.

PARTNERING TEAM | Sub Consultants – The Sanberg Group

Sanberg's project experience includes a diverse range of natural and cultural resource planning, management, research and compliance work, and site assessment and characterization studies. These include environmental planning and compliance documents (NEPA/CEQA); archaeological investigations and recovery; geological and geo-archaeological studies; specialized investigations using digital-optical and GIS technologies; and the preparation of plans, permits and reports. In addition, some of their key staff have served as expert witnesses in complex and sensitive environmental litigation requiring detailed and thorough evaluation of environmental documentation for use in assignment of liability and cost recovery. Sanberg brings strong Geotechnical Services, Quality Engineering Support Services, Construction Management Technical Support Services, and Sustainability experience to our team.

Together, our expert staff have a proven track record of success as individuals, but more importantly, as key members of project teams. Our clients benefit from our ability to maintain excellent relationships with all project partners and stakeholders and value our ability to undertake unique assignments, introduce new management concepts, and adapt approaches proven effective elsewhere. The common core of our companies is a corporate philosophy that emphasizes a strong commitment to our clients. Our charter is to serve our clients in achieving their objectives. Because of our shared philosophy, we are certain that our team will deliver customized services in close cooperation with Culver City and other professional partners.

V.A.1 COMPANY AND GENERAL INFORMATION

Company Name: California Testing & Inspections, Inc.
Type of Organization: California Corporation
Address: 1515 Compton Ave, 1st Floor
Los Angeles, CA 90021
Telephone Number: (213) 748-4900
Fax number: (213) 478-4901
Website: www.caltestinspection.com
DIR Registration No: 1000007591



V.A. 2. LETTER OF TRANSMITTAL

April 27, 2017

Ms. Sol Blumenfeld, Community Development Director
City of Culver City, Community Development Department
9770 Culver Boulevard
Culver City, CA 90232-0507

RE: REQUEST FOR PROPOSALS (RFP) | GEOTECHNICAL PLAN CHECK SERVICES

Dear Sol Blumenfeld,

California Testing & Inspections (CT&I) submits this proposal to provide *Geotechnical Plan Check Services* for the City of Culver City. CT&I understands the terms and conditions of the RFP and agrees to comply accordingly. CT&I is a Corporation founded on August 2008 by former employees from one of the largest geotechnical and materials engineering firms in California with one objective: strict adherence to the project budget while providing quality, professional geotechnical and laboratory testing services.

We thank you for the opportunity to submit our proposal and look forward to the possibility to be part of your professional team.

Sincerely,



J. Lorenzo Martinez, P.E., Principal Engineer
California Testing & Inspections

V.A. 3 PRIMARY CONTACT

To respond to services, CT&I provides the following primary contact:

Mr. J. Lorenzo Martinez, P.E, Principal Engineer
1515 Compton Ave., 1st Floor
Los Angeles, CA 90021
T (213) 748-4900 | C (310)461-5614
email: lmartinez@caltestinspection.com

Mr. Martinez is authorized to respond to the requests for services under this solicitation and assist your team in providing professional services and administrative support.

V.B QUALIFICATIONS AND EXPERIENCE OF THE FIRM

V.B.1 California Testing & Inspections, Inc. (CT&I) is a Geotechnical consulting firm and material testing laboratory, located in Downtown - Los Angeles, and founded by Mrs. Fabiola V. Jaque, P.E. in August of 2008 assembling a team of professional engineers and highly certified technicians in the Geotechnical and laboratory fields, with more than twenty years of experience in this area. The proposed team has proven record in delivering technical work and excellent client service. Our principal staff brings professional experience and management skills leading a group of professional and/or technical staff capable to complete the tasks assigned with cost-effective and practical solutions to our clients.

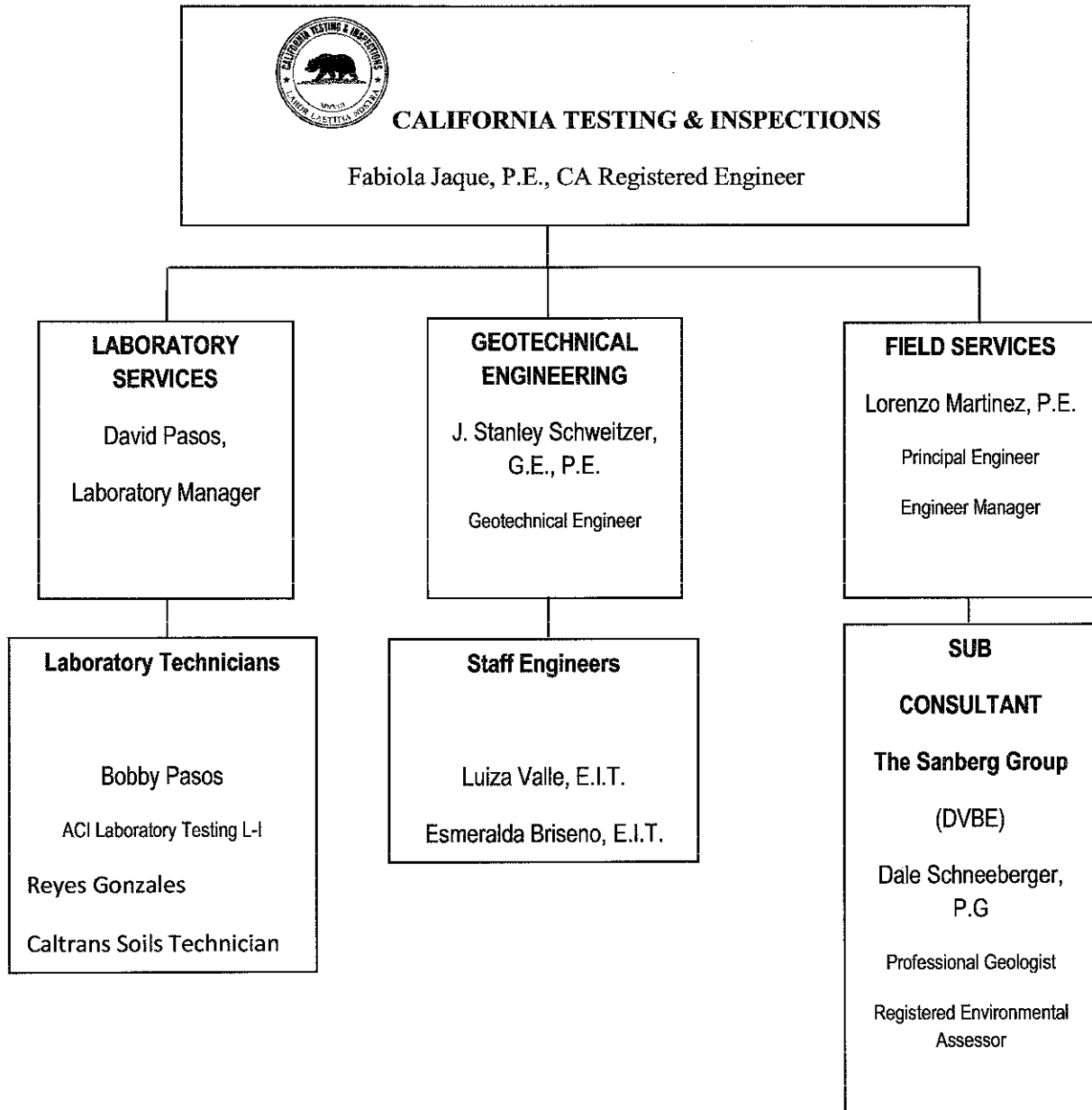
California Testing & Inspections, Inc. (CT&I) is a Los Angeles-based, certified DBE/SBE providing Geotechnical Engineering, Construction Inspection and Material Testing Laboratory Services. Founded in August 2008 by professional engineers Fabiola Jaque, P.E., and J. Lorenzo Martinez, P.E., CT&I's principals bring more than 40 years of combined experience managing and supervising Geotechnical engineering projects and Quality Control and Quality Assurance services for public and private agencies.

With more than 30 employees including Professional engineers, Staff engineers, laboratory technician and field inspectors, CT&I operates a full-service materials testing facility that is accredited by AASHTO, the City of Los Angeles, CALTRANS and the California Division of the State Architect (DSA) and is fully certified to perform materials testing for soils, aggregate, asphalt, concrete, masonry, fireproofing and steel in accordance with Caltrans and ASTM/AASHTO current Standard Methods.

In only seven years of existence CT&I has grown to become a reputable firm capable of securing contracts with large local agencies including LACMTA, Los Angeles County Public Works, NASA-JPL, State of California DGS. We are consistently recognized by other companies as a competent and viable team member, capable of providing a professional and effective response to the project – a credit to the background and expertise of the company's management and founders.

CT&I's mission is to provide our private and public sector clients with outstanding Geotechnical engineering service, Materials Testing and Field Construction Quality Control/Quality Assurance for buildings and infrastructure projects, from its foundations through project completion; using highly skilled professionals and technicians; working collaboratively with our clients and partners; and using common sense and practical approaches.

ORGANIZATIONAL CHART



V.B.2 CT&I is a consulting firm and do not have any parent company and or affiliation with other corporation.

V.B.3 This project for the Culver City will be managed in our Los Angeles office, located at 1515 Compton Av, Suite A, Los Angeles, California 90021.

The following list indicates the member team and percentage of participation time in this project:

Lorenzo Martinez, P.E. Principal Engineer, Civil, Contact person, project coordinator, review plans and report, 50%

J. Stanley Schweitzer, Geotechnical Engineer, review plans and report, 90% dedication

Luiza Valle, Staff Engineer, assist in review of plans and report, 60% dedication

Esmeralda Briseno, Staff Engineer, assist in review of plans and report, 60% dedication

V.B.4 FIRM EXPERIENCE

San Fernando Mental Health Facility – Geotechnical Investigation, Los Angeles County Public Works

The project consist of geotechnical exploration and report/recommendations for the demolition of the existing structure, backfilling the existing basement and the design and construction of a new mental health center. The new structure will be a one story structure with either steel and/or wood frame. It is expected that the structure will be supported with a combination of conventional isolated pad and continuous wall footings. For the purpose of analysis, we have assumed that maximum pad footing loads will be on the order of 75 kips each and maximum wall loads will be on the order of four kips per lineal foot. Maximum depth of footings has been assumed to be on the order of three feet below adjacent finished grade. The floor is expected to consist of a conventional concrete slab on grade.

Biegler Vault Expansion - Geotechnical investigation, University of Southern California

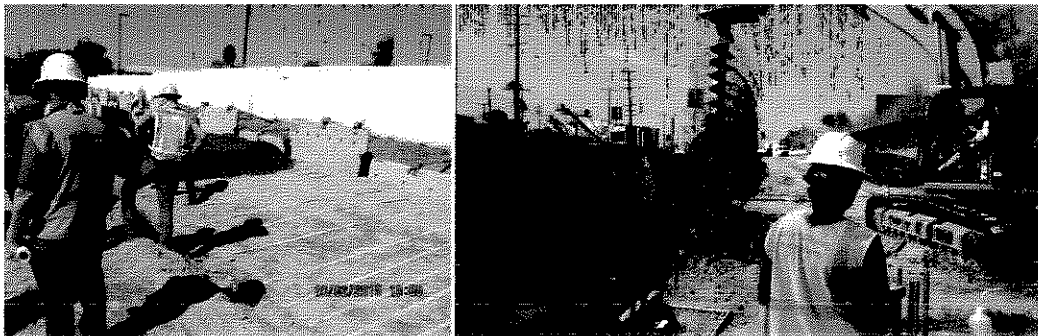
CT&I. performed the geotechnical investigation for the Biegler Vault Expansion located at USC. The project consisted to provide the geotechnical recommendations or the expansion of the existing LADWP Vault. CT&I also performed Deputy Inspection services during the construction of the Vault and elevator projects; including, welding inspections, PCC inspections, epoxy, NDT tests and various laboratory testing.



LACMTA Crenshaw/LAX Transit Corridor and Regional Connector Projects (2014- current): As part of the team providing Quality Control/Quality Assurance to the Design/Build team, CT&I perform geotechnical engineering support services during the construction of the MSE walls. Our professional staff is collaborating with the project design professionals providing quality engineering review of the geotechnical recommendations, managing the construction inspections, collaborating with LACMTA personnel during review of the work and maintaining log and document control of the construction process.

The participation of CT&I on the Crenshaw/LAX and the Regional Connector projects facilitates the understanding of LACMTA in-place compliance programs related not only to construction, but also, labor compliance and project documentation in general.

CT&I's personnel participating on these projects includes Stanley Schweitzer, G.E., P.E., as Geotechnical Engineer of Record providing engineering recommendations during the construction; Lorenzo Martinez, P.E., CT&I's Project Manager supervising the field operations; and Fabiola Jaque, P.E. assisting with document control.



Challenge: Beginning of MSE walls construction required constant geotechnical observation during excavation to clearly identify faults, geophysical anomalies and unsuitable soils. These areas were unable to receive the designed loads that require the MSE walls then; recommendation was needed on site to continue the construction process.

Status: Completed on schedule and within budget.

California Testing & Inspections Quality Assurance procedures comply with the requirements established by the American Association of State Highway and Transportation (AASHTO) criteria, R-18 and approved by AASHTO-AMRL.

All the procedures for personnel training and evaluation, calibrations, standardizations and maintenance of laboratory and field equipment, log, storage and disposal of samples are detailed in our Quality System Manual (QSM).

Technical Accreditations

Currently, California Testing & Inspections Laboratory is accredited by

- Division State of Architect (DSA LEA # 259)
- City of Los Angeles Department of Building & Safety
- Cement and Concrete Reference Laboratory (CCRL)
- AASHTO Materials Reference Laboratory (AMRL)

SBE/DBE Certifications

California Testing & Inspections is currently a certified Small and Disadvantaged Business with different entities, some of our certifications are:

- California Unified Certification Program – Women/Minority/Disadvantage Business Enterprise (WBE/MBE/DBE)
- City of Los Angeles – Small Local Business Enterprise
- County of Los Angeles – Community Business Enterprise (CBE) and Small Business Enterprise (SBE)
- Los Angeles County Metropolitan Transportation Authority (Metro) – SBE
- U.S. Small Business Administration – SBE
- State Of California – SBE

V.B.5 Our professional's experience in Municipal and Local government allows us to understand the City's necessities and requirements. Among other characteristic that make us different with our colleague companies are:

- **Experienced Project Team:** our proposed team has a vast experience providing geotechnical investigations and soils inspections under the requirements of the CBC and California Code of Regulations, Title 24. Since 2008, California Testing & Inspections has direct participation in projects with School Districts, Colleges, Public and Privates Universities located in the Los Angeles region and each of its principals have more than 20 years of professional experience in this type of projects.
- **Sustainable:** Our Company is committed with sustainability policies to protect and preserve the environment. Last year, our company acquired, refurbished and digitally upgraded a 1970's tensile machine, for the use in our laboratory. Otherwise, this 20-thousand-pound steel machine was destined to be melted or dumped in a landfill.
- Our goal for the upcoming year 2017 is to introduce the use of Non-Radioactive field equipment (nuclear gauge density equipment) on school and college projects, adopting the newly approved standards related to field density test for soils, and asphalt pavements.
- Our company is committed to replace, by the end of 2019, all company vehicles with zero emission vehicles. One out of the four company truck and a forklift acquired last year are 100 electric and zero emission compliance.
- **Budget:** California Testing & Inspections understands the budgetary constrictions to complete any municipal project review. **Our hourly rates and quotes are all inclusive, no hidden fees.**

V.C. QUALIFICATIONS AND EXPERIENCE OF PROPOSED TEAM

Fabiola Jaque, P.E., President: Ms. Jaque is one of the founders and President of California Testing & Inspections. She is a California Registered Professional Engineer with over 20 years of experience in geotechnical and material testing laboratory services. Her expertise is also applicable to field work.

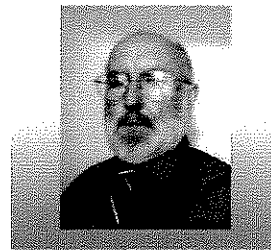
Lorenzo Martinez, P.E., Principal Engineer: Mr. Martinez will be the point of contact for this project. He is a California Registered Professional Engineer with over 20 years of experience. His professional experience includes Geotechnical project execution and review for and with Local Government and Municipalities, field exploration and laboratory testing, project management and contract administration. His past experience includes "hands-on" participation on multiple projects for two of the most recognized companies in the engineering industry. Mr. Martinez is the co-founder of California Testing & Inspections and his role at the company relates to Principal and Project Engineering tasks

Joseph Stanley "Stan" Schweitzer, P.E., G.E., Principal Geotechnical Engineer: Mr. Schweitzer is a registered geotechnical engineer with over 35 years of experience in California providing a "cost effective" and "value engineered" approach to geotechnical engineering, seismic analysis, and construction technology to achieving the project objectives. He is responsible for all aspects of project management and engineering from investigation through construction including coordination and communication with clients, municipalities, contractors, and sub-contractors. Mr. Schweitzer's other responsibilities include developing and executing field investigations and laboratory testing programs, completing engineering analyses, preparing technical reports, and observing geotechnical aspects of construction.

JOSEPH STANLEY "STAN" SCHWEITZER, P.E., G.E.
Principal Geotechnical Engineer

California Testing & Inspections, Los Angeles, California (August 2011-Today), Principal Geotechnical Engineer

Mr. Schweitzer is a registered geotechnical engineer with over 35 years of experience in providing a "cost effective" and "value engineered" approach to geotechnical engineering, seismic analysis, materials inspection and testing, and construction technology to achieving the project objectives. He is responsible for all aspects of project management and engineering from investigation through construction including coordination and communication with clients, municipalities, contractors, and sub-contractors. Other responsibilities include developing and executing field investigations and laboratory testing programs, completing engineering analyses, preparing technical reports, and observing geotechnical aspects of construction. Project types included a wide range of transportation, education, commercial, municipal, industrial facilities, reservoirs and multi-lot residential developments.



YEARS OF EXPERIENCE
 35

EDUCATION
 B.S., Civil Engineering, California State University Long Beach
 M.S., Civil Engineering, California State University Long Beach

REGISTRATION
 Professional Civil Engineer, California, #28238
 Geotechnical Engineer, California, #758

CERTIFICATIONS
 OSHA 40-Hour Hazardous Waste Worker and 24-Hour First Responder-Operations
 Radiation Safety Officer (RSO)



Representative Projects

Provided Geotechnical Engineering Consulting Services to a variety of Cities and County Agencies that included geotechnical report review. These Cities included Irvine, Torrance, Moreno Valley and Counties of Los Angeles and Orange
 Roosevelt Elementary School - Lynwood USD 2007 PM/Soils & Geologic Studies
 Will Rogers Elementary School - Lynwood USD 2008 PM/Soils & Geologic Studies
 Woodrow Wilson Elementary School - Santa Ana USD 2009 PM/Soils & Geologic Studies
 Washington Elementary School - Pasadena USD 2008 PM/Testing & Inspection
 Clifton Middle School-Phase II - Lynwood USD 2007 PM/Soils & Geologic Studies
 John Muir Middle School - Los Angeles USD 2007 PM/Soils & Geologic Studies
 Elliot Middle School - Pasadena USD 2006 PM/Testing & Inspection
 Giano Middle School - La Puente USD 2006 PM/Soils & Geologic Studies
 Abbott Elementary School -Lynwood USD 2007 PM/Soils & Geologic Studies
 Lynwood Elementary School - Lynwood USD 2005 PM/Soils & Geologic Studies
 Mira Costa High School - Manhattan Beach USD 2006 PM/Soils & Geologic Studies
 Burbank High School Phase II - Burbank USD 2007 PM/Testing & Inspection

FABIOLA JAQUE, P.E.
Project Manager

**California Testing & Inspections, Los Angeles, California (August 2008-
 Today)**



YEARS OF EXPERIENCE
 20

EDUCATION
 B.S. Civil Engineering,
 University of Santiago, Chile

REGISTRATION
 Professional Engineer, California;
 P.E. # C-76471

CERTIFICATIONS
 NICET Level III, CMT, Soil
 NICET Level III, CMT, Concrete
 NICET Level III, CMT, Asphalt
 ACI Field Testing Technician,
 Grade I
 ACI Concrete Laboratory Testing
 Technician, Grade I
 WAQTC Embankment and Base
 Radiation Safety Officer (RSO)

PROFESSIONAL MEMBERSHIP
 ASCE
 AWS
 ASTM



**California testing & Inspections, Los Angeles, California (July 2008-
 Present)** – President /Owner

Mrs. Jaque founded California Testing & Inspection, gathering a diverse group of talented professionals in the geotechnical and material testing field. Her diverse experience in the geotechnical field allowed her to create a company dedicated to provide a tailored service for private and public agencies. The company has gained a solid reputation in the Los Angeles area obtaining contract with public entities as METRO, Los Angeles County PW, NASA-JPL, DGS and private companies as Skanska, Wash-Shea, Kewit, etc.

Converse Consultants, Monrovia, California (April 2003- July 2008) – Staff Engineer.

Ms. Jaque was responsible for supervising the performance of laboratory and field testing on soils, aggregates, asphalt, and concrete samples in accordance with ASTM/ACI/AASHTO Standards.

Training of laboratory and field personnel to perform geotechnical observations and density testing of compacted soils associated with various earthworks operations.

Report and communicate the progress and issues related to the services to the Project Manager and/or Clients.

Mrs. Jaque has performed various laboratory tests on soil samples collected at the project sites during geotechnical investigation to determine the site subsurface conditions and develop geotechnical recommendations for the design and construction, and various material testing including, but not limited to: R Value, Permeability Test, Direct Shear, Consolidation, Moisture/Density (Proctor), Marshall density, Compression Testing on concrete, Masonry and Prisms samples, Atterberg Limits.

Representative Geotechnical Projects:

San Fernando Mental health Center – Los Angeles County, 2107
 Monarch Center, Los Angeles Valley College - LACCD 2015
 Santa Monica HS- Science & Technology Bldg. SMMUSD, 2011
 USC Bieagler Vault, School of Engineering-USC, 2015
 Crenshaw –LAX- Transit Corridor, METRO 2014-2017
 Camp Pendleton training facility – USMC, 2012
 Equestrian Center, Pierce College – LACCD, 2013

J. LORENZO MARTINEZ, P.E.
Principal Engineer | Field Operations Supervisor

California Testing & Inspections, Los Angeles, California (August 2014- Today), Vice President, Principal Project Engineer



YEARS OF EXPERIENCE
20

EDUCATION
B.S. Civil Engineering,
University of Santiago, Chile

REGISTRATION
Professional Engineer, California;
P.E. # C-71547

CERTIFICATIONS
NICET Level III, CMT, Soil
NICET Level III, CMT, Concrete
NICET Level III, CMT, Asphalt
ACI Field Testing Technician,
Grade I
ACI Concrete Laboratory Testing
Technician, Grade I
WAQTC Embankment and Base
Radiation Safety Officer (RSO)

PROFESSIONAL MEMBERSHIP
ASCE
AWS
ACI
ASTM



City of Beverly Hills, Department of Public Works, Engineering Division, Beverly Hills, California (2008-2014)

Mr. Martinez was the Project Manager for several CIP projects, including annual street resurfacing project, water main replacement project, water reservoir replacement program etc. Beside the construction project, Mr. Martinez duties included the review permits for use of the PRW and geotechnical and hydrological report for private construction and development project, permits applications of the Building and Safety within the city.

Mr. Martinez was in charge of the geotechnical reports review and interacts with the applicants to communicate deviations, review, resubmit for conformity with City and State standards

Kleinfelder, Diamond Bar, California (2007-2008) – Project Engineer.

Mr. Martinez was the Project Manager for various Los Angeles School District Projects. Among others, his duties included the review of plans and specifications for each project, geotechnical investigation and report for DSA school projects,

Converse Consultants, Monrovia, California (2003-2007) – Construction Service Manager-Staff Engineer

- Conduct engineering analysis for typical geotechnical engineering design considerations including bearing capacity, settlement, and lateral earth pressures on retaining walls and buried structures.
- Develop recommendations for earthwork and site grading for a wide variety of civil engineering projects.
- Prepare summary documentation of engineering analysis, including sections for inclusion in foundation reports, materials reports and other geotechnical memoranda to be reviewed by a licensed Geotechnical Engineer.
- Implementing production, productivity, quality, and customer service standards; resolving problems; identifying engineering construction system improvements.

Converse Consultants, Las Vegas, Nevada (2001-2003)

– Staff Engineer.

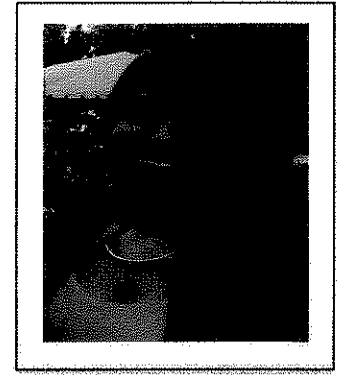
Mr. Martinez worked as Staff Engineer performing different soils and material testing, including: Classification of Soils, Compaction Test, Sieve Analysis, Atterberg Limits, Consolidation, Expansion Index, R Value, Concrete and Masonry.

Luiza Mariela Valle, E.I.T

Staff Engineer

California Testing & Inspections, Los Angeles, CA 90021

(2015 – Present)



Education

B.S Civil Engineering 2015
California State University,
Long Beach

Registration

Engineer-in-Training
Certificate No. 155906

Personal Membership

ASCE member



Ms. Valle assists and supports the licensed Geotechnical Engineer field, Laboratory and geotechnical analysis activities. Among other duties, prepare the final geotechnical report and review the following report items:

- Site Description
- Proposed Development
- Previous Studies
- Scope of Investigation
- Geologic/Geotechnical Site Conditions
- Geologic/ Geotechnical Analysis
- Geologic/ Geotechnical Evaluation
- Geologic/ Geotechnical Hazards
- Types of Land Uses and Projects
- Conclusions
- Recommendations

Representative Projects:

Crenshaw/LAX Corridor – Geotechnical Engineer of Record (on-going)

Biegler Vault Expansion – Geotechnical Exploration University of Southern California (on-going)

Mental Health Facility – Geotechnical Investigation,
County, City of San Fernando (2017)

LA

Esmeralda Briseno

Staff Engineer

California Testing & Inspections, Los Angeles,
California (2015 – Today)



EDUCATION

B.S. Civil Engineering, 2015
California State University,
Long Beach

PROFESSIONAL MEMBERSHIP

ASCE

Ms. Briseno assists and supports the licensed Geotechnical Engineer field, laboratory and geotechnical analysis activities.

Among other duties, prepares reviews and completes several documentations for the specified project, including geotechnical laboratory testing reports, following the completion of material testing, as well as the final geotechnical report to be reviewed by a licensed Geotechnical Engineer.

Ms. Briseno should be familiar with the current codes, ordinances, and guidelines applicable to development and construction including the following:

- Culver City Municipal Code.
- Culver City General plan (Seismic Safety Elements of the Revised general Plan)
- California Building Code (CBC)
- California Environmental Quality Act of 1970, and Amendments
- Alquist-Priolo Earthquake Fault Zone Act of 1972, and Amendments
- Seismic Hazards Mapping Act of 1990

Ms. Briseno performs various laboratory tests on soil samples collected at project sites during geotechnical investigation. Laboratory tests include, but not limited to: Direct Shear, Atterberg Limits, Sieve Analysis, and Expansion Index.

REPRESENTATIVE PROJECTS

Mental Health Facility – Geotechnical Investigation, Los Angeles County, City of San Fernando (2017)

Biegler Vault Expansion – Geotechnical Exploration, University of Southern California (On-Going)

Crenshaw/LAX Transit Corridor – Geotechnical Engineer of Records (On-Going)



V.D. QUESTION/RESPONSE

V.D.1 SCOPE OF SERVICES

The Geotechnical report review for Culver City's projects will be performed on "On-Call/As-Needed" basis. Our approach to this contract is to adapt our resources according to the progress of the plan check and permit review, and preparing to further tasks, maintaining a continuous communication with the PW or BS, the Project team and the contractor/consultant. One of our primordial tasks is to participate in the.

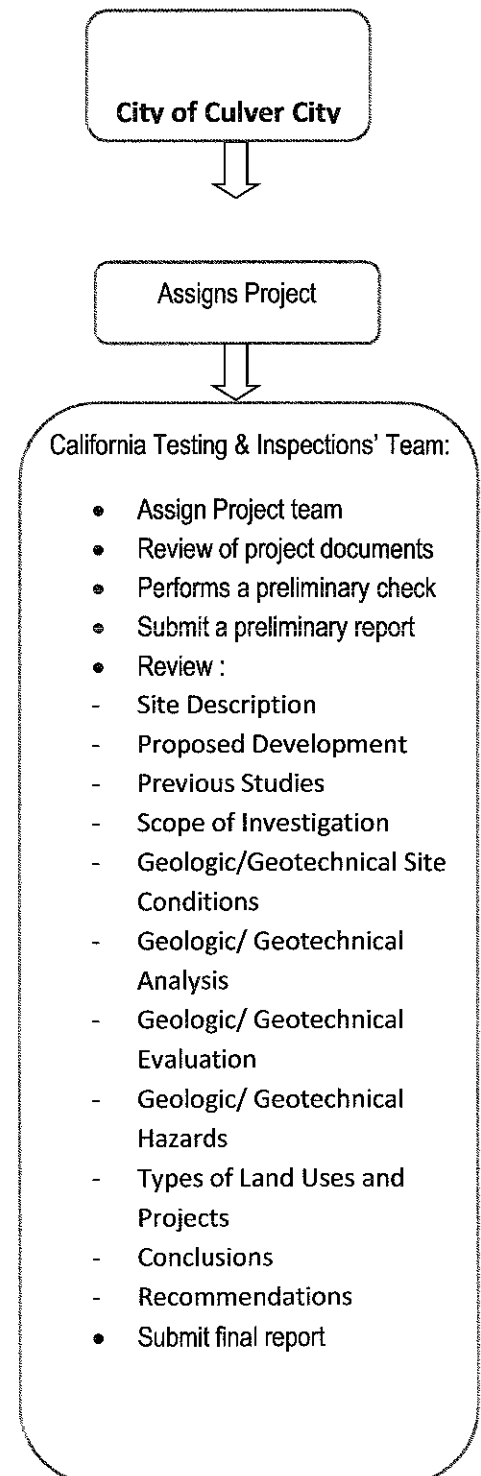
As part of our intern QA/QC program, during the course of the geotechnical report review, our designated Project Manager, will constantly verify the review work performed by the Geotechnical engineer and staff engineers, the reports of review results provided and preliminary reports provided to city staff.

All the services provided will be under the supervision of a Professional Geotechnical Engineer in compliance with CBC requirements.

Once a project is assigned to our team, we will formally request copies of the project documents including but not limited to: geotechnical report, plans, specifications and structural calculations to verify if the geotechnical report is in compliance with CBC and City's requirements.

V.D.2 STATEMENT

CT&I dedicate an exclusive team to work in each project. Same professional will review reports and contact city's staff for submittals and resubmittals review. The two licensed engineers in charge of this project have a vast experience working with local government and public agencies and they understand the city's requirements.





CALIFORNIA TESTING & INSPECTIONS

Geotechnical and Construction Material Testing Laboratory

V.E. FEES

PROFESSIONAL SERVICES	HOURLY RATE
Geotechnical Plan Check Services for the City of Culver City Community Development Department	
Geotechnical Engineer	\$ 150.00
Project Engineer	\$ 95.00
Staff Engineer– Geotechnical Engineer Aid	\$ 65.00
Project Administration: Clerical, Drafting	\$ 50.00

- Services will be invoiced monthly and by project.
- Proposed Rates are Net 30. A 1.5% fee will be added for late payments.
- Proposed Rates are valid until December 31st, 2019.

F. REFERENCES

District/Organization: Los Angeles County Department of Public Works

Contact Name: Parisa Dadmehr, Project Manager

Contact Telephone Number: (626) 300-2334

E-mail: PDadmehr @dpw.lacounty.gov

Project Name: San Fernando mental health Center

Project Description: Geotechnical investigation

Scope of Services: Field investigation, Laboratory test, Geotechnical Engineering, Soils report and recommendations

Project Start/Completion: Dec. 2016/Feb, 2017/2017

Total Cost of Geotechnical and soils testing services provided: \$15,000 approx. combined

District/Organization: County of Los Angeles ISD/Facilities Operation Services

Contact Name: Byron Engh, Project Manager

Contact Telephone Number: (323) 267-3438

E-mail: BEngh@isd.lacounty.gov

Project Name: Camp Glenn Rocky and Camp Mums Detention Facility

Project Description: Geotechnical support and review

Scope of Services: Soils engineering, material testing and field inspections

Project Start/Completion: Varies from 2013-Today

Total Cost of Geotechnical and soils testing services provided: \$50,000

District/Organization: USC Capital Construction Development

Contact Name: Brooke Ishimoto, Project Manager

Contact Telephone Number: (213) 821-6954

E-mail: bishimot@usc.edu

Project Name: Biegler Vault Expansion,

Project Description: Soils exploration and geotechnical recommendations

Scope of Services: Geotechnical Exploration, soils testing and inspections

Project Start/Completion: 2012-2013

Total Cost of Geotechnical and soils testing services provided: \$35,000



GEOTECHNICAL PLAN CHECK SERVICES RFP #1642
Typical schedule

Task #	Activity	7/1	7/2	7/3	7/4	7/5	7/6	7/7	7/8	7/9
1	Preliminary Report Review									
2	Preliminary Report to City staff									
3	Initial Report Review									
4	Comments and observation report									
5	Report to City's Staff									
6	Review of submitted									
7	Final approved report									
	Total Hours									
	Staff Engineer	2								
	Project engineer									
	Geotechnical Engineer	2						2		
	Geologist		2							
	Clerical and admin		1						1	