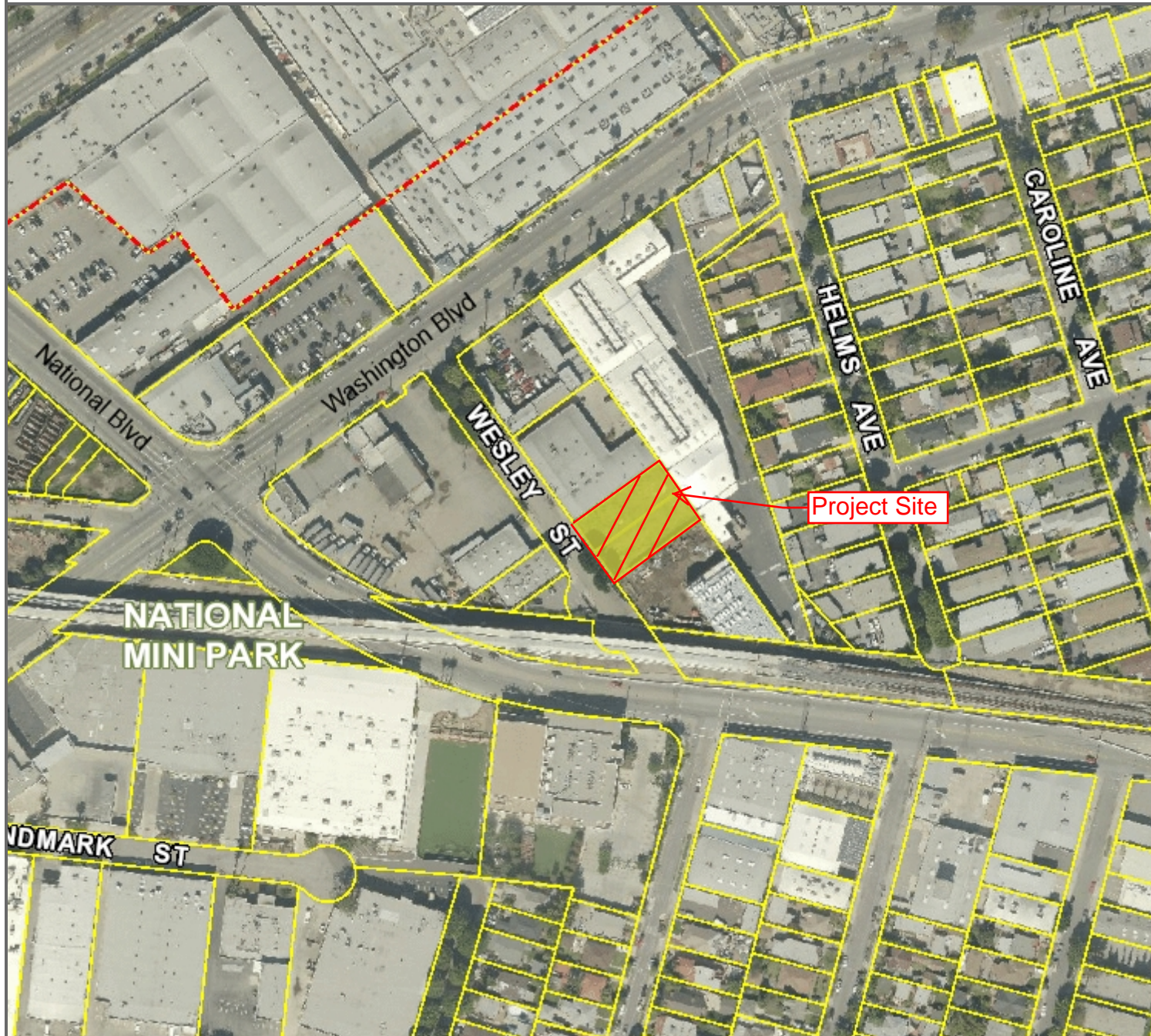


Attachment No. 2  
**3434 Wesley Street**  
P2016-0089-ZCMA/SPR/DOBI/AM



Source: Planning Division  
Map Created: 10/03/2016  
Meeting Date: Oct. 26, 2016



**THE CITY OF  
CULVER CITY**



INFORMATION TECHNOLOGY DEPARTMENT  
GEOGRAPHIC INFORMATION SYSTEMS

9770 CULVER BLVD  
CULVER CITY, CA 90232  
TEL: 310-253-5976

Scale: 1:3,047



0 126.94 253.9 Feet