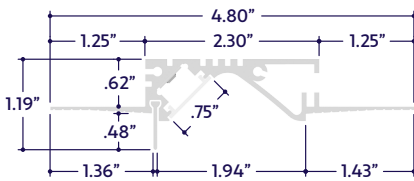


### END VIEW / DIMENSIONS



### MOUNTING OPTION



Mud-In

### GENERAL FEATURES

<b>Applications</b>	Wall Washing, Grazer, or Direct View Lighting
<b>Lens</b>	Clear, 50% Semi-Frosted, or 100% Frosted
<b>Optics &amp; Asymmetric</b>	15°, 30°, 45°, 60°, 120°, or Asymmetric Optics
<b>Length</b>	Built to Order (+/- 1/8" Tolerance)
<b>Construction</b>	Aluminum Extrusion
<b>Weight</b>	0.47 lbs per foot
<b>Mounting</b>	Mud-In
<b>Listing</b>	Dry or Damp Location UL2108, CSA C22.2 #9 UL8750, CSA250
<b>Driver</b>	Remote (Sold Separately)
<b>Closet Rating</b>	Up to 3.6 Watts per Foot Maximum
<b>Temperature Ratings</b>	Operating / Startup: -20° to 48°C (-4° to 120°F) Storage: -40° to 76°C (-40° to 170°F)
<b>Installation Link</b>	

### ELECTRICAL

<b>Dimming</b>	0-10V, Forward / Reverse Phase, Lutron, DMX, DALI
<b>Maximum Run (Class 1 Applications)</b>	18' (6.5W), 21' (5.5W), 26' (4.5W), 33' (3.6W), 36' (1.5W, 2.5W)
<b>Maximum Run (Class 2 Applications)</b>	13' (6.5W), 15' (5.5W), 18' (4.5W), 23' (3.6W), 34' (2.5W), 36' (1.5W)
<b>Luminaire Voltage</b>	24VDC

### LENS / OPTICS APPEARANCE



Clear Lens (CL)  
Visible Diode Image  
0% Loss Factor



50% Semi-Frosted Lens (SF)  
Slight Diode Image  
12.5% Loss Factor



100% Frosted Lens (F)  
No Diode Image: Line of Light  
25% Loss Factor



Asymmetric Lens (ASM)  
Slight Diode Image  
18% Loss Factor



Optic Lens (15D, 30D, 45D, 60D)  
Slight Diode Image  
18% Loss Factor

### SPECIFY PRODUCT CODE | CHOOSE FROM DROP DOWNS

Series	Lens	Watts per Foot	Dimming	CCT LED	Listing	Finish	Luminaire Length
<b>A8-ZIGY-FWW</b>							
ZIGY Flush Wall Washer (A8-ZIGY-FWW)	50% Semi-Frosted Lens (SF)	1.5 Watts (1.5W) 154 Lumens / ft*	Phase Dimming: Forward / Reverse Phase (PH)	2400K (24K)	Indoor (DRY)	Natural Silver (NA)	Specify Length in Feet & Inches Example: 7'8"
		2.5 Watts (2.5W) 257 Lumens / ft*	0-10V: 100% - 1% (10V)	2700K (27K)			
	100% Frosted Lens: Line of Light (F)	3.6 Watts (3.6W) 370 Lumens / ft*	Hi-lume 1% 2 Wire* (LTEA)	3000K (30K)	Outdoor (DAMP)	Polished (PA)	
		4.5 Watts (4.5W) 463 Lumens / ft*	Hi-lume 1% 3 Wire* (L3DA)	3500K (35K)			
	Asymmetric Lens (ASM)	5.5 Watts (5.5W) 566 Lumens / ft*	Hi-lume Premier 0.1% JA8* (L3D0)	4000K (40K)		Satin / Silver (SA)	
		6.5 Watts (6.5W) 669 Lumens / ft*	JA8 0-10V (JA8-10V)	4500K (45K)			
	15° Optics (15D)		JA8 Hi-Lume 1% 2 Wire* (JA8-LTEA)	Red* (R)			
	30° Optics (30D)		DMX-512* (DMX)	Green* (G)			
	45° Optics (45D)		DALI* (DALI)	Blue* (B)			
	60° Optics (60D)		Leave Blank for Non-Dimming	Amber* (A)			

Note: See page 2 for ordering notes & restrictions.

### ORDERING NOTES & RESTRICTIONS

- \*1 Lumens per Foot based on 35K CCT LED. **Example:** 103 Lumens x 1.5 Watts = 154 Lumens per Foot.
- \*2 **(LTEA)** 40 watt max Lutron Hi-Lume 1% 2 Wire #LTEA4UIUKL-CV240
- \*3 **(L3DA)** 40 watt max Lutron Hi-Lume 1% 3 Wire #L3DA4UIUKL-CV240
- \*4 **(L3D0)** 96 watt max Hi-Lume Premier 0.1% #L3D0-96W24V-U
- \*5 Default DMX address of each luminaire is 001. Consult third party DMX commissioner to modify at time of installation.
- \*6 DALI commissioning to be performed by a third party at time of installation. ALUZ does not provide DALI commissioning.
- \*7 Red, Green, Blue, and Amber LEDs are only available in 2.5W and 5.5W.
- \*8 Default finish is White **(WH)** if left blank.

### LAMP FEATURES

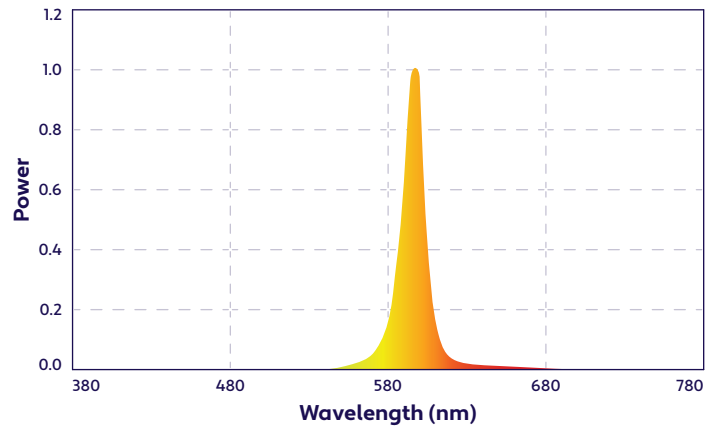
Lamp Type	LEDs
CRI	> 95
Efficacy (Based on 35K CCT LED)	103 Lumens per Watt

### LAMP SPECIFICATIONS

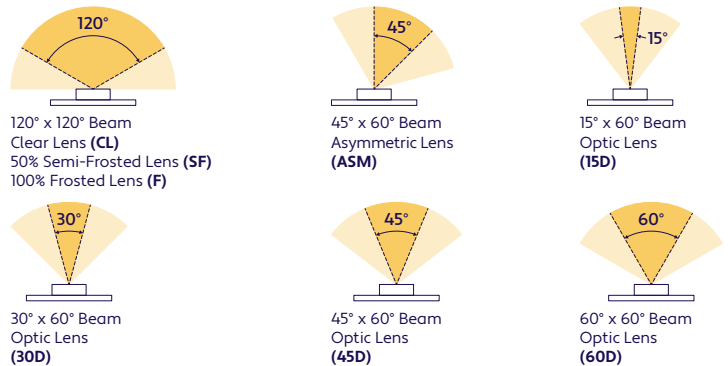
Lamp Number	Correlated Color Temperature / Description	Efficacy (Lumens per Watt)	L70 LED Life
24K	2400 Kelvin (Incandescent White)	90	60,000 hrs.
27K	2700 Kelvin (Warm White)	101	
30K	3000 Kelvin (Warm White)	100	
35K	3500 Kelvin (Neutral White)	103	
40K	4000 Kelvin (Neutral White)	105	
45K	4500 Kelvin (Neutral White)	102	40,000 hrs.
R	Red (621nm)		
G	Green (525nm)		
B	Blue (470nm)		
A	Amber (590nm)	37	

To calculate Lumens per Foot, multiply Efficacy by Watts per Foot.  
**Example:** 103 Lumens per Watt x 1.5 Watts per Foot = 154 Lumens per Foot.

### SPECTRAL POWER DISTRIBUTION AMBER LED (590nm) TURTLE FRIENDLY



### BEAM ANGLES

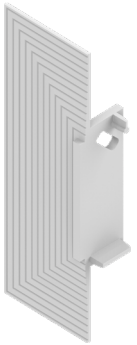




### DRIVERS

Dimming Selection	Product Code	Link to Specification Sheet / URL
Phase Dimming: Forward Phase / Reverse Phase	(PH)	
0-10V: 100% - 1%	(10V)	
Hi-Lume 1% 2 Wire*2	(LTEA)	
Hi-Lume 1% 3 Wire*3	(L3DA)	
Hi-Lume Premier 0.1% JA8*4	(L3D0)	
JA8 0-10V	(JA8-10V)	
JA8 Hi-Lume 1% 2 Wire*2	(JA8-LTEA)	
DMX-512*5	(DMX)	
DALI*6	(DALI)	

### END CAPS (Sold Separately)



Left End Cap  
(A8-ZIGY-FWW-ECL)

Part #	Qty.
A8-ZIGY-FWW-ECL	

Note: Use 1 Left End Cap for each terminus on the left side.

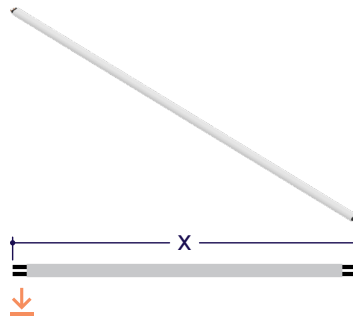


Right End Cap  
(A8-ZIGY-FWW-ECR)

Part #	Qty.
A8-ZIGY-FWW-ECR	

Note: Use 1 Right End Cap for each terminus on the right side.

### DRY CONNECTORS (Sold Separately)

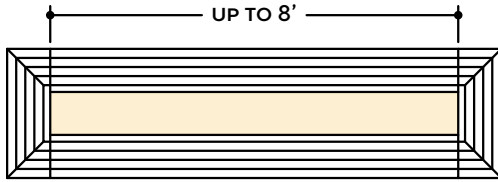


Part #	Length	Qty.
A8-PC-2P-PLM-DRY-	36"	
A8-PC-2P-PLM-DRY-		

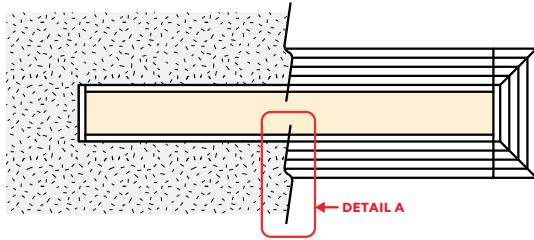


## DESIGN GUIDELINES

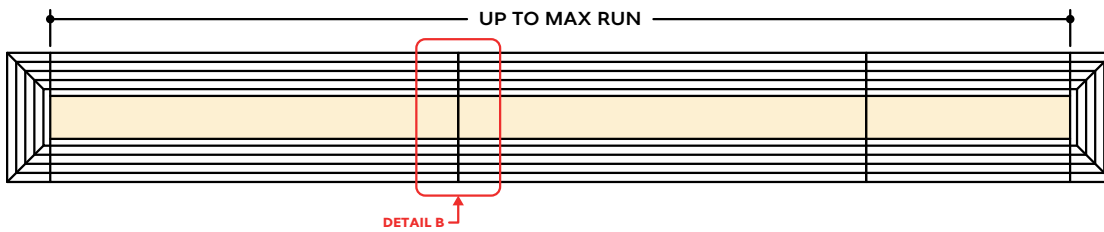
Individual Fixture



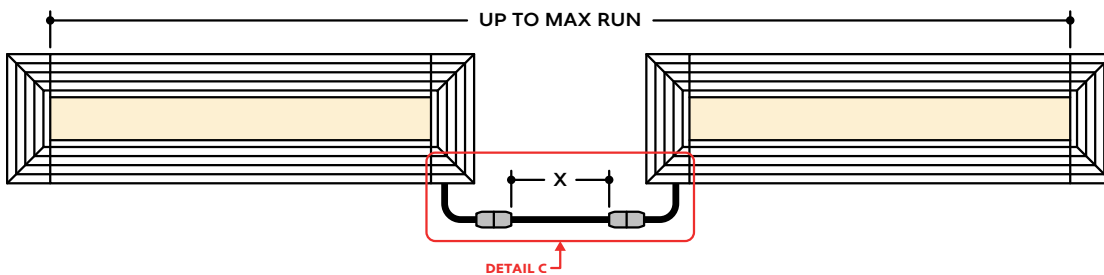
Individual Fixture with Mud-In



Continuous Run



Runs with Continuous Connector



## KEY

- Detail A** **Mud-In:** Plaster is used to cover the flanges of the extrusion, leaving a flush appearance. Refer to installation instructions for details.
- Detail B** **Continuous Connection (Dry Location):** Luminaire segments connect using pins, leaving no gaps between segments. Refer to installation instructions for additional information.
- Detail C** **Dry Continuous Connector:** Used to span a corner or traverse a gap, corner, or obstacle in a dry location installation area. For Mud-In applications, the connection is located behind the mounting surface, such as drywall.

**Note:** Drawings not to scale. Product may differ from examples shown.

