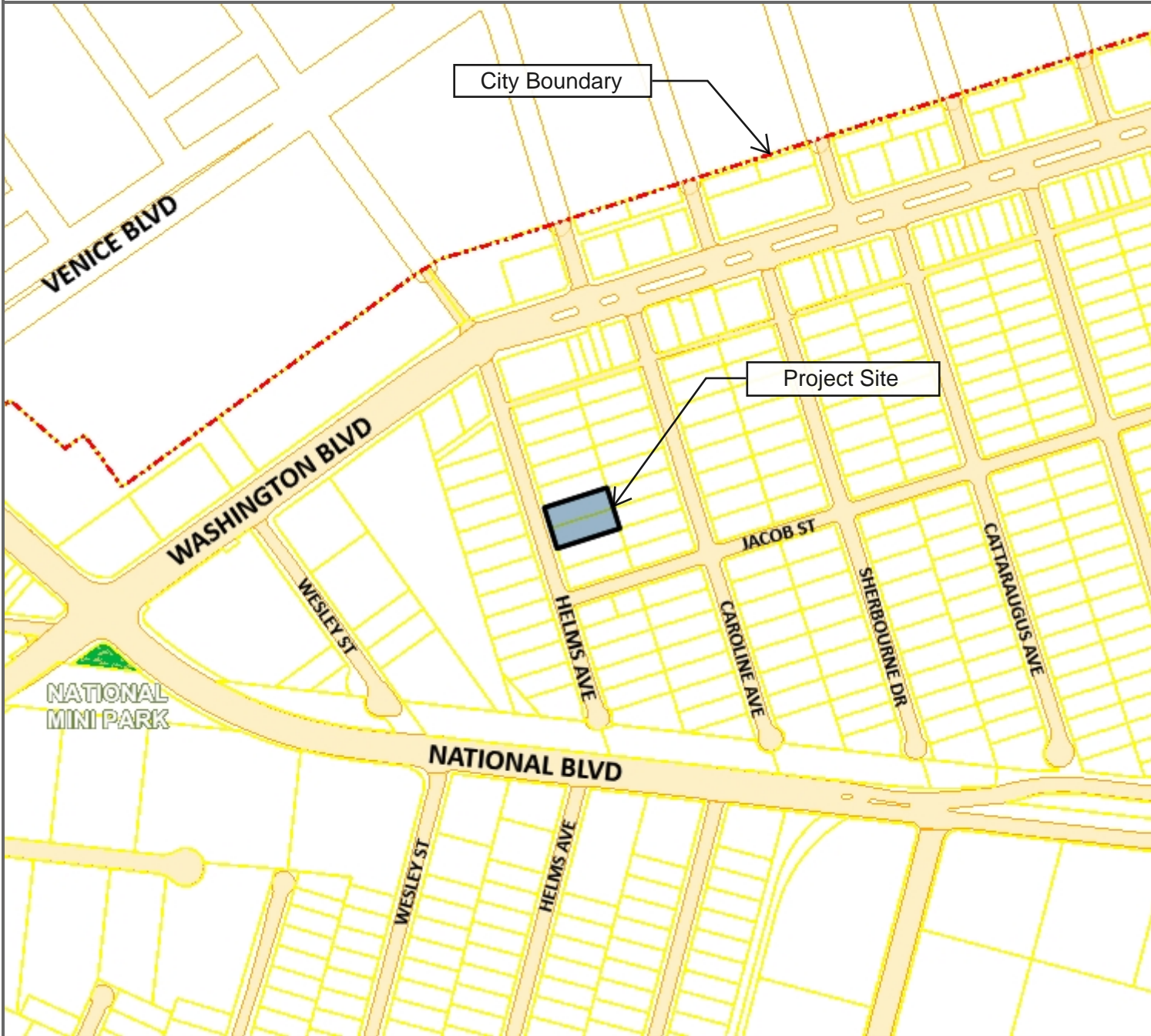


Attachment No. 2
Vicinity Map
3336-3340 Helms Ave



Administrative Site Plan Review, P2019-0329-ASPR, and Tentative Tract Map, P2019-0329-TTM, for eight (8) residential condominium units with semi-subterranean parking



**THE CITY OF
CULVER CITY**



INFORMATION TECHNOLOGY DEPARTMENT
GEOGRAPHIC INFORMATION SYSTEMS

9770 CULVER BLVD
CULVER CITY, CA 90232

TEL: 310-253-5976

