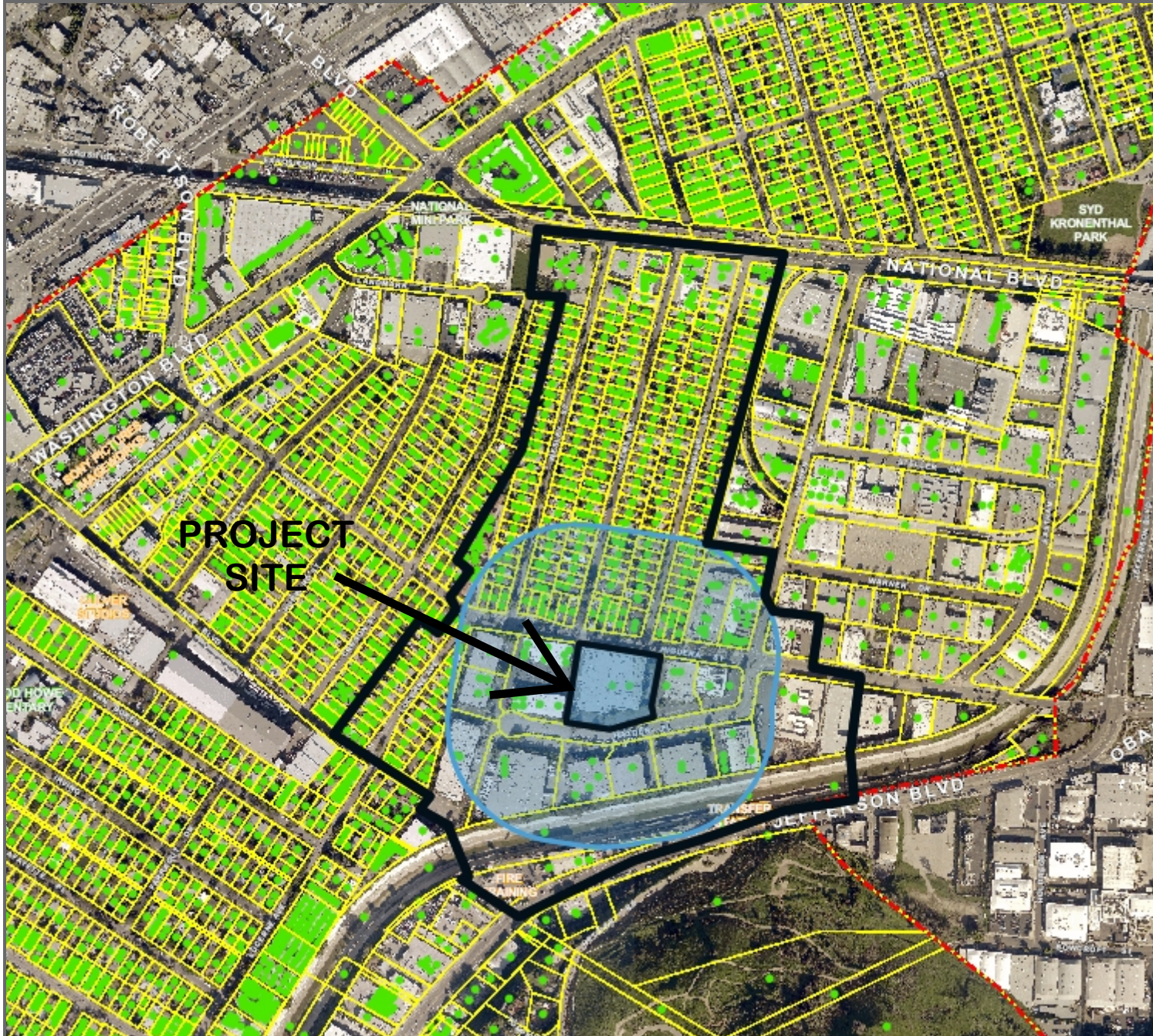


ATTACHMENT NO. 3
Creative Office Development
8631 - 8635 Hayden Place



Source: CDD/Planning
Map Created: 10/15/2021
Meeting Date: July 13, 2022

Case No: Site Plan Review,
P2022-0056-SPR



**THE CITY OF
CULVER CITY**



INFORMATION TECHNOLOGY DEPARTMENT
GEOGRAPHIC INFORMATION SYSTEMS

9770 CULVER BLVD
CULVER CITY, CA 90232

TEL: 310-253-5976

Scale: 1:9,028

