



SOURCE: Visual Impact Analysis, 2016

Entrada Creative Office  
**Figure 1**  
View Location Map



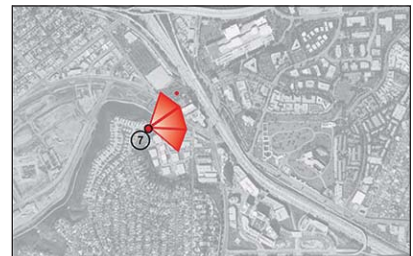
Existing panoramic view of the Project Site from the easterly terminus of Kentwood Court looking northeast.



Panoramic view of the Approved Project from the easterly terminus of Kentwood Court looking northeast.



Panoramic view of the modified Project from the easterly terminus of Kentwood Court looking northeast.



SOURCE: KTUA, 2016

Entrada Creative Office

**Figure 2**

View 7 - Panaramic View



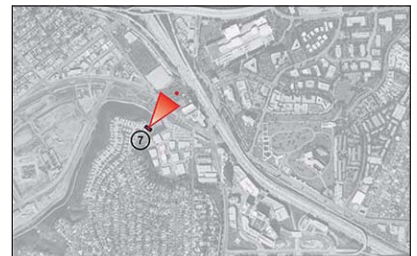
Existing direct view of the Project Site from the easterly terminus of Kentwood Court looking northeast.



Direct view of the Approved Project from the easterly terminus of Kentwood Court looking northeast.



Direct view of the Modified Project from the easterly terminus of Kentwood Court looking northeast.



SOURCE: KTUA, 2016

Entrada Creative Office

**Figure 3**  
View 7 - Direct View



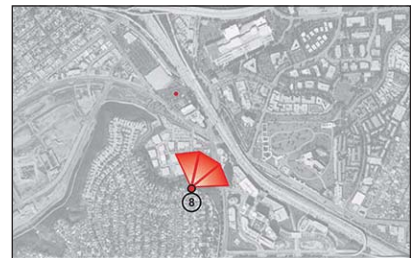
Existing panoramic view of the Project Site from the upper terminus of Arizona Avenue looking northwest.



Panoramic view of the Approved Project from the upper terminus of Arizona Avenue looking northwest.



Panoramic view of the Modified Project from the upper terminus of Arizona Avenue looking northwest.



SOURCE: KTUA, 2016

Entrada Creative Office

**Figure 4**  
View 8 - Panaramic View



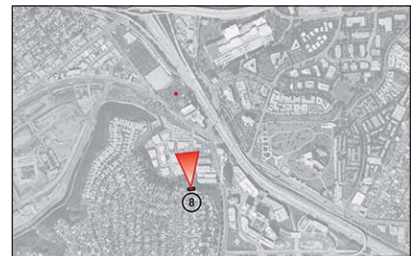
Existing direct view of the Project Site from the upper terminus of Arizona Avenue looking northwest.



Direct view of the Approved Project from the upper terminus of Arizona Avenue looking northwest.



Direct view of the Modified Project from the upper terminus of Arizona Avenue looking northwest.



SOURCE: KTUA, 2016

Entrada Creative Office

**Figure 5**  
View 8 - Direct View



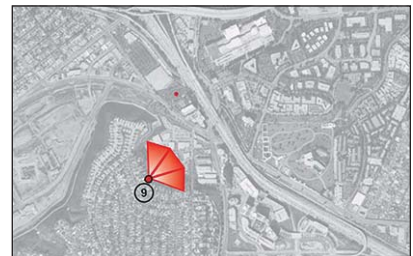
Existing panoramic view of the Project Site from Riggs Place (approximately mid-block) looking northeast.



Panoramic view of the Approved Project from Riggs Place (approximately mid-block) looking northeast.



Panoramic view of the Modified Project from Riggs Place (approximately mid-block) looking northeast.



SOURCE: KTUA, 2016

Entrada Creative Office

**Figure 6**

View 9 - Panaramic View



Existing direct view of the Project Site from Riggs Place (approximately mid-block) looking northeast.



Direct view of the Approved Project from Riggs Place (approximately mid-block) looking northeast.



Direct view of the Modified Project from Riggs Place (approximately mid-block) looking northeast.



SOURCE: KTUA, 2016



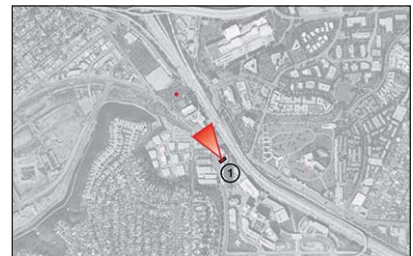
Existing direct view of the Project Site from Sepulveda Boulevard looking northwest.



Direct view of the Approved Project from Sepulveda Boulevard looking northwest.



Direct view of the Modified Project from Sepulveda Boulevard looking northwest.



SOURCE: KTUA, 2016

Entrada Creative Office

**Figure 8**

View 1 - Direct View