

TREES



Cercis occidentalis/ Western rebud  
blooms: early spring



Heteromeles arbutifolia/ Toyon  
blooms: late spring to summer



Leptospermum laevigatum/ tea tree  
blooms spring



Prunus illicifolia/ Hollyleaf Cherry  
blooms spring



Platanus racemosa / Western sycamore  
shade tree

SHRUBS



Arctostaphalos 'Howard McMinn'  
Howard McMinn Manzanita  
blooms early spring



Arctostaphalos bakeri 'Loius Edmunds'/  
Louis Edmunds Manzanita  
blooms early spring



Baccharis pilularis 'Pigeon Point'/Dwarf Coyote Bush  
blooms early spring



Buddleia davidii / David's Butterfly bush  
non-native  
long blooming attracts butterflies



Ceonothus concha/ California Mountain Lilac  
blooms spring



Ceanothus griseus 'Yankee Point' /Yankee  
Point Wild Lilac  
blooms spring



Eriogonum-giganteum / St. Catherine's Lace  
evergreen  
important butterfly plant



Rhus integrifolia / Lemonade berry  
blooms: late winter- early spring  
evergreen



Rhus ovato/ Sugar bush  
blooms early spring



Senna artemisioides / Feathery Cassia  
blooms: late winter- spring

PERENNIALS



Achillea millifolium / Common yarrow  
blooms summer



Aloe estriata / Coral Aloe  
non-native  
evergreen



Coreopsis gigantea / Giant Coreopsis  
blooms spring and summer



Coreopsis maritima/ Beach Coreopsis  
blooms spring to summer



Corethrogyne filaginifolia / California Aster  
blooms summer  
attracts butterflies



PERENNIALS



Diplacus aurantiacus / Orange Bush Monkey Flower  
attracts hummingbirds



Dryopteris arguta / California Wood Fern  
evergreen



Encelia californica / California Brittlebush



Ericameria ericoides/ Mock Heather  
blooms summer to winter  
evergreen



Erigeron foliosus / Leafy Daisy  
blooms May- September



Erigeron glaucus / Seaside Daisy  
blooms winter- summer



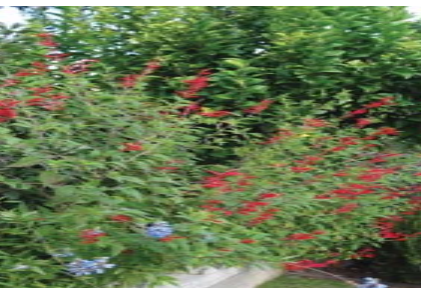
Eriogonum grand var. rubescens /San Miguel Island Buckwheat  
attracts butterflies, blooms spring-fall



Eriophyllum confertiflorum / Golden Yarrow  
blooms: early summer



Eschscholzia californica / California Poppy  
blooms spring to early summer



Galvezia speciosa /Island Bush-Snapdragon  
attracts hummingbirds  
blooms spring-fall



Iris douglasiana / Douglas Iris  
evergreen  
blooms spring



Iris douglasiana Bert's Blue/ Deep Blue Douglas Iris  
evergreen  
blooms spring



Keckellia cordifolia/ Heart-leaved Penstemon  
blooms: spring-summer  
attracts humming birds and butterflies



Lantana camara / Lantana  
Official flower of Culver City  
non-native, attracts butterflies



Lavandula angustifolia/ English Lavender  
non-native  
long blooming attracts butterflies



Lupinus chamissonis/ Silver Dune Lupine  
blooms spring



Lupinus formosus/ Western Lupine  
blooms summer to fall  
attracts butterflies



Romneya coulteri / Matilija Poppy  
blooms: spring to summer



Salvia leucatha / Mexican Bush Sag  
blooms year round  
attracts hummingbirds



Salvia apiana/ White Sage  
attracts hummingbirds  
blooms spring-summer

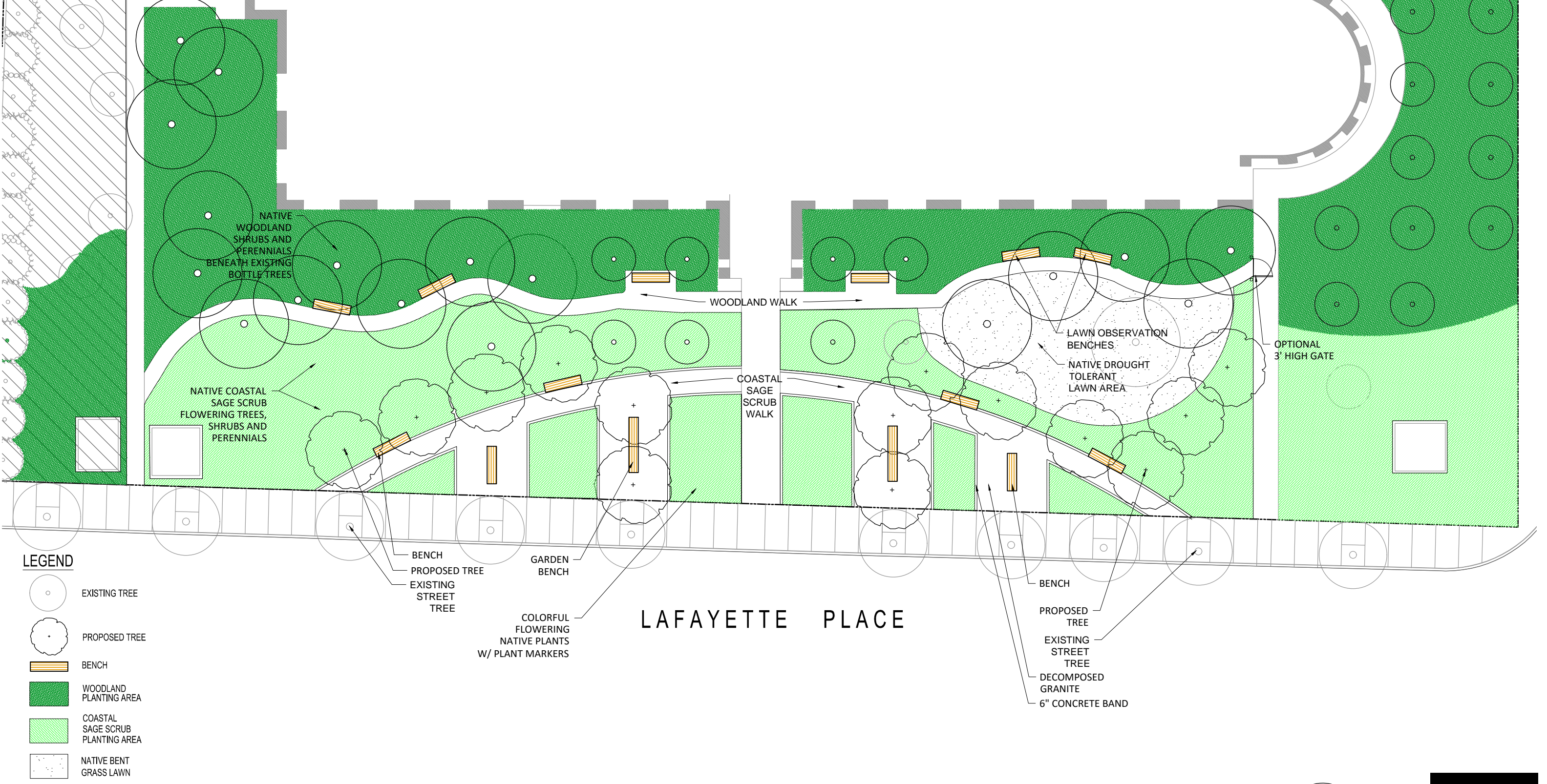








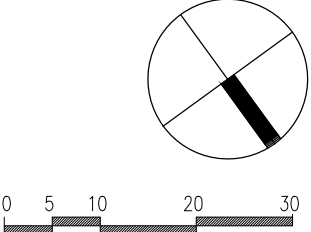




# LAFAYETTE PLACE

WATER REDUCTION

NATIVE PLANT DEMONSTRATION GARDEN- ARCING PATH - OPTION 2















CITY HALL  
1979 Calum Boulevard  
← Parking  
Deliveries at  
Lafayette Place  
Entrance