



AGAVE DESMETTIANA 'VARIEGATA'  
Smooth Agave



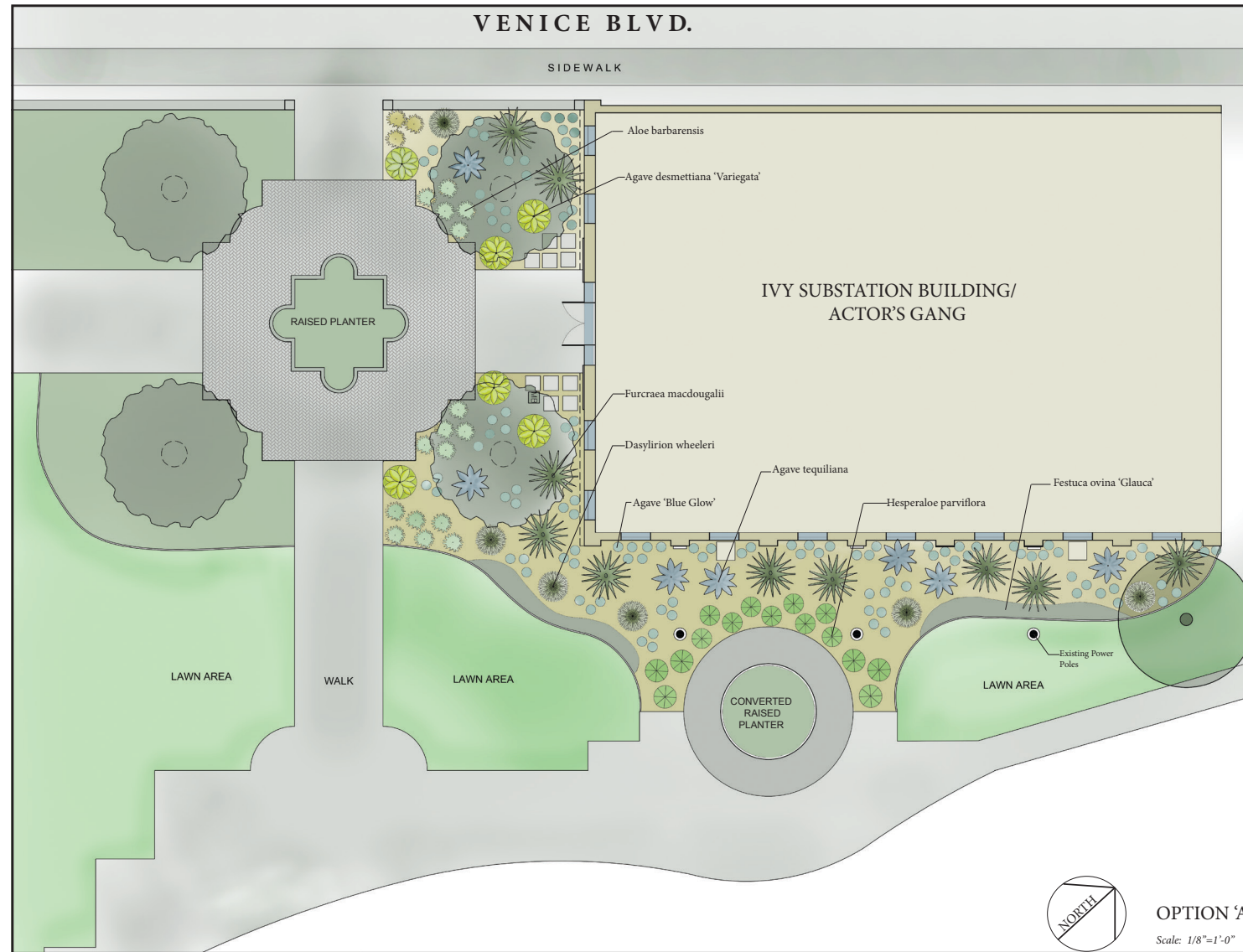
ALOE BARBARENSIS  
Aloe vera



HESPERALOE PARVIFLORA  
Red Yucca



FESTUCA OVINA 'GLAUCA'  
Blue Fescue



**DESIGN INTENT:**

- Drought tolerant Plant Palette selected to enhance 'Mission Revival' style architecture of Historic Building
- Barrier type Plant material to deter homeless population from building and planting area
- Existing fountain converted into planter with blooming succulents
- Planter enlarged to remove old lawn and to soften existing power poles, linking plaza and converted raised planter
- Furcraea as vertical accent along south facing perimeter and entry combines aesthetically with existing Canary Island Palms and Birds of Paradise
- Low spiny succulent (Blue Agave) as ground cover against the building and throughout planter
- Softer more pedestrian friendly succulents (Agave desmettiana) along path of travel and walkways
- Blooming succulents (Aloe barbardensis & Hesperaloe parviflora) frame entry and highlight raised converted raised planter



FURCRAEA MACDOUGALLII  
MacDougall's Furcraea



AGAVE TEQUILIANA  
Weber's Blue Agave



DASYLIRION WHEELERI  
Desert Spoon



AGAVE 'BLUE GLOW'

**CULVER CITY MEDIA PARK LANDSCAPE RENOVATION**  
Planting Concept