



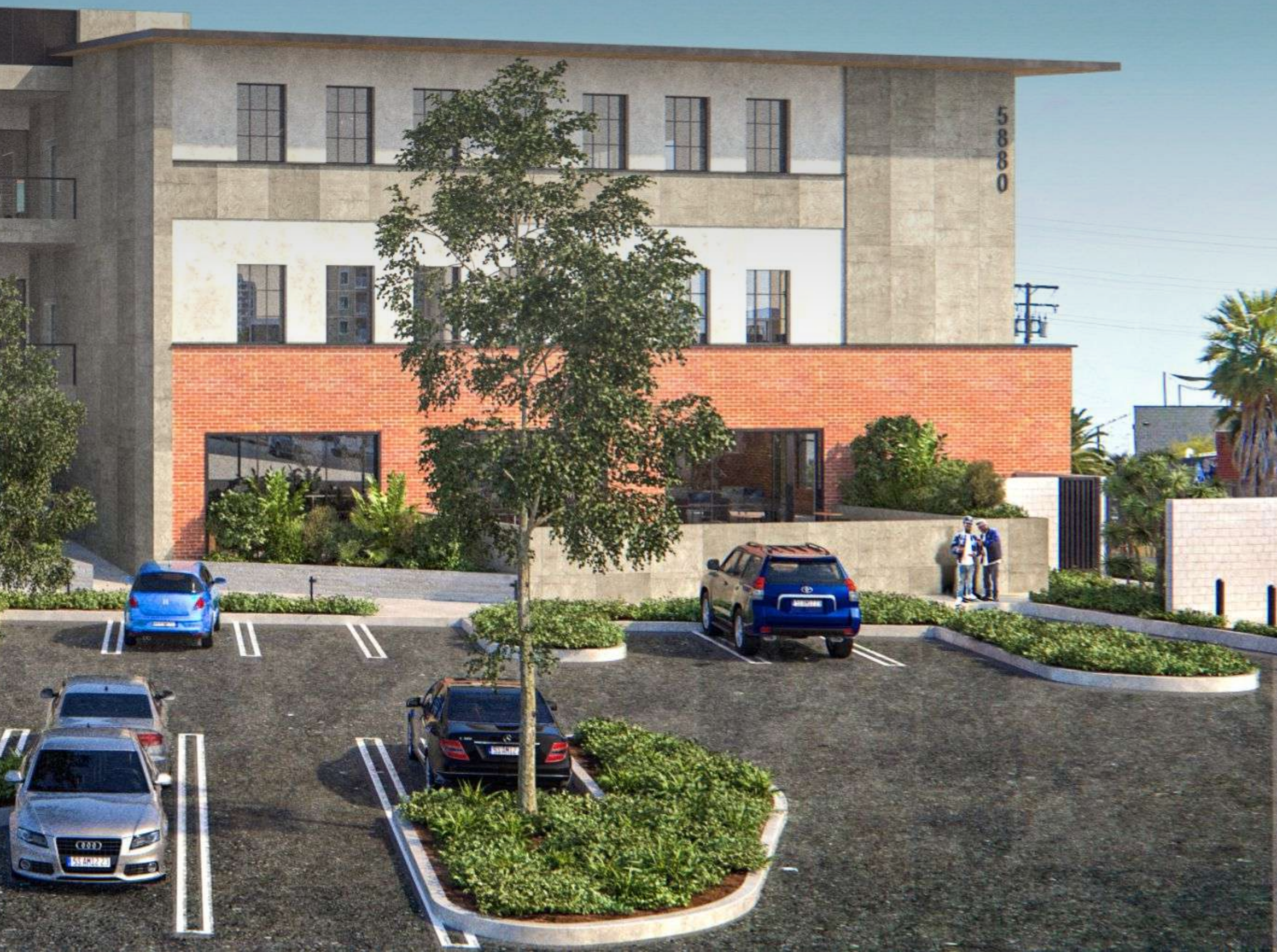
**5880 ADAMS BOULEVARD**



**CONCEPT ART PLAN**

**09/25/2024**

# 01 INTRO

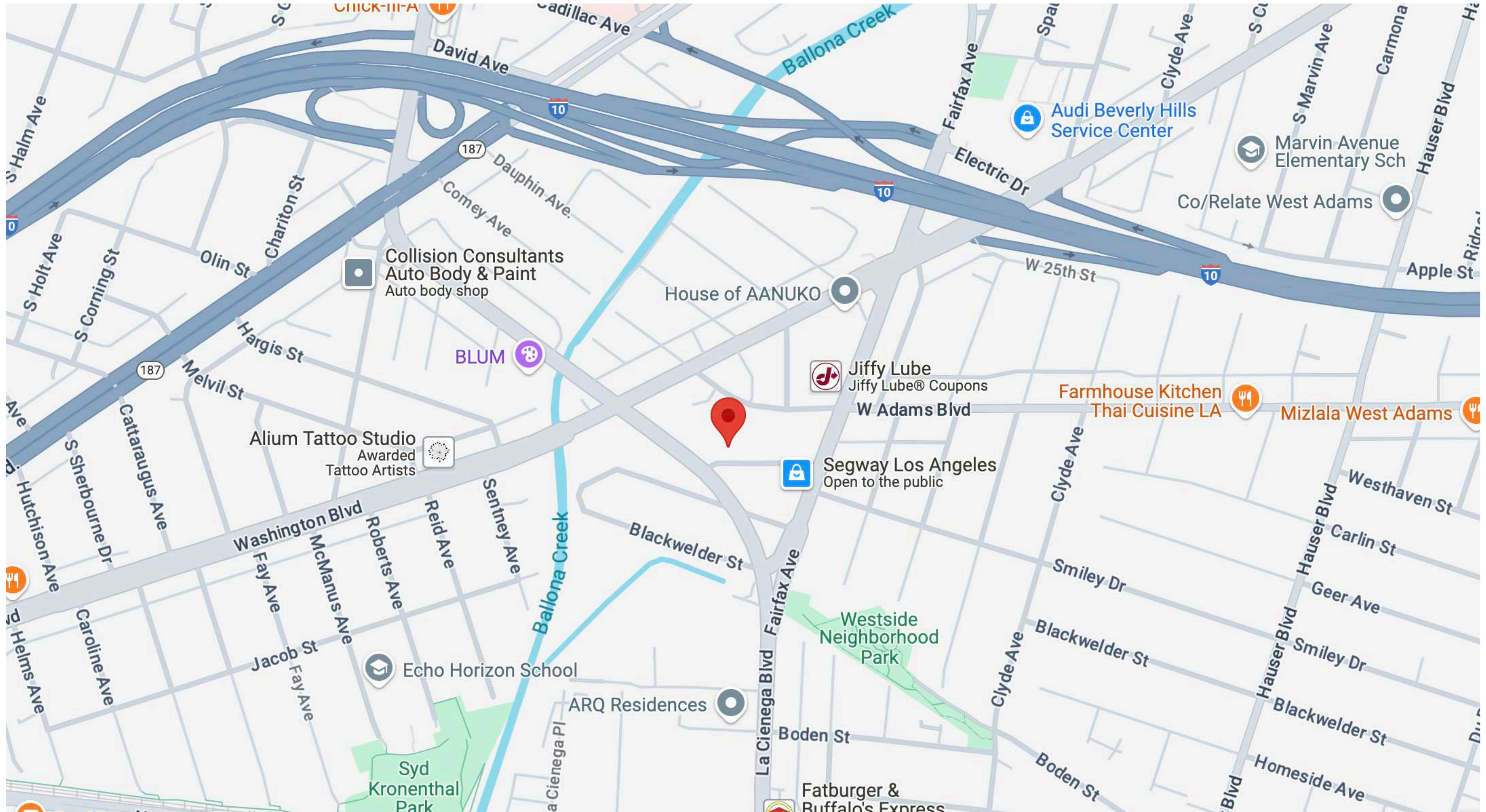


## **5880 Adams Boulevard::**

The new building at 5880 Adams in Culver City, developed by Redcar, is a modern commercial space designed to complement the area's growth as a creative and business hub. The project features flexible office spaces tailored for tech, media, and creative industries, integrating sustainable design elements and emphasizing a connection to the surrounding community. The building will incorporate green technologies and amenities that promote well-being, reflecting Redcar's focus on adaptive reuse and thoughtful urban development. Its location in a burgeoning part of Culver City positions it as a key destination for businesses in the area.



# SITE LOCATION





# VISUAL DOCUMENTATION

# RENDERINGS



# RENDERINGS





# RENDERINGS

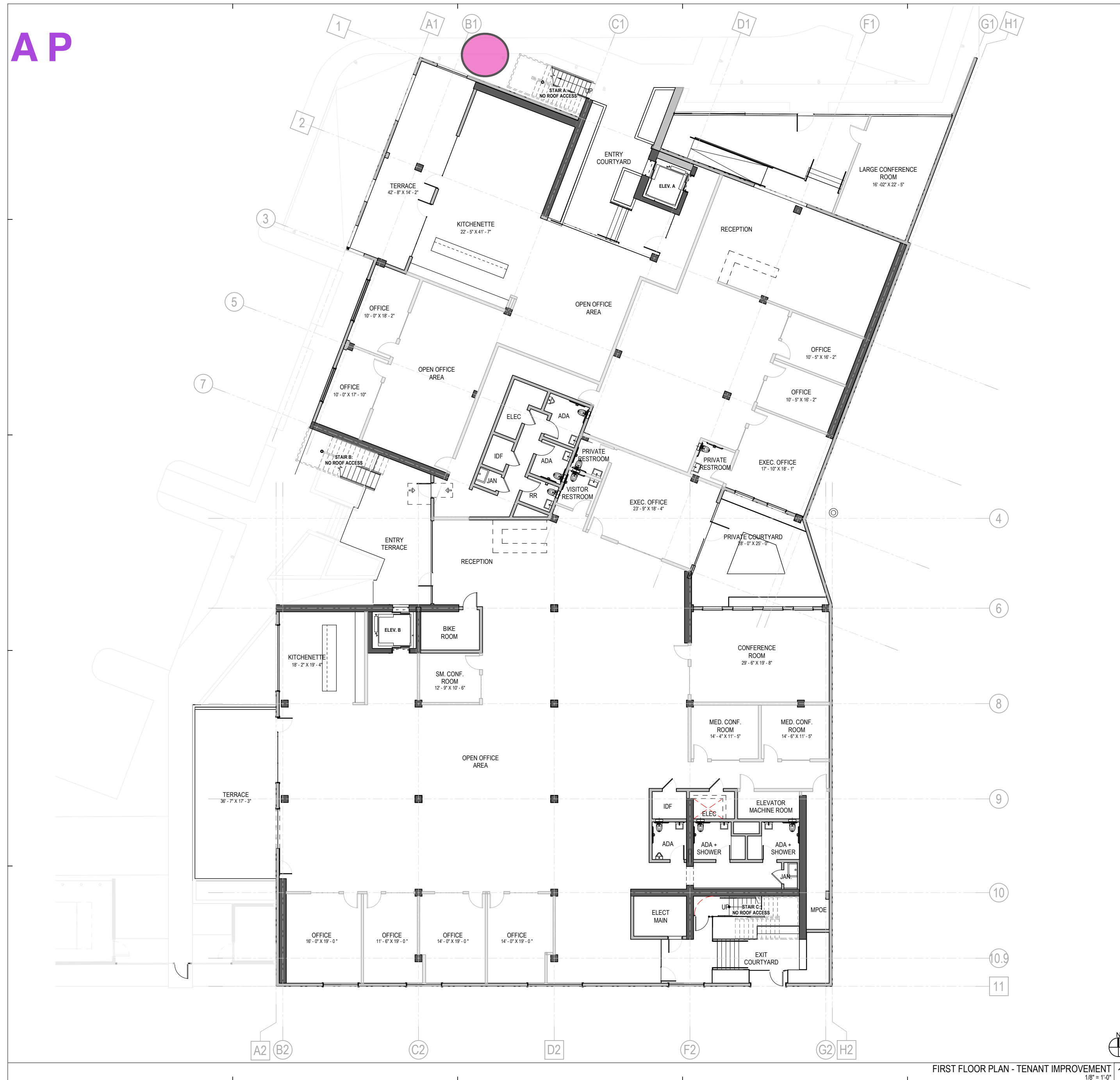






# ART LOCATION

# SITE MAP



FIRST FLOOR PLAN - TENANT IMPROVEMENT  
1/8" = 1'-0" 10

## FLOOR PLAN GENERAL NOTES

ARCHITECT:  
EVAN RAABE ARCHITECTURE STUDIO  
EVAN RAABE, AIA, NCARB, BC22671  
2121 EAST 7TH PLACE, UNIT 201  
LOS ANGELES, CA 90021  
EVAN@ERA.STUDIO

OWNER:  
REDCAR PROPERTIES LTD.  
2341 MICHIGAN AVE.  
SANTA MONICA, CA 90404

STRUCTURAL:  
GHANIM STRUCTURAL ENGINEERING  
888 N. FAIR OAKS AVE., SUITE F,  
PASADENA, CA 91103  
(626) 407-2224

MEP:  
LAM + TEA ENGINEERING  
100 MLK BLVD, SUITE 207  
CHATTANOOGA, TN 37405  
615.208.2833 x338

CIVIL:  
SHERWOOD DESIGN ENGINEERS  
2548 MISSION ST.  
SAN FRANCISCO, CA 94110  
415.677.7300 x343

LIGHTING:  
ALAN NOELLE ENGINEERING  
3639 E HARBOR BLVD # 204,  
VENTURA, CA 93001  
805.563.5444

## FLOOR PLAN LEGEND

- STRUCTURAL WALL; SEE STRUCT. FINISH PER PLANS
- NON-STRUCTURAL WALL; SEE STRUCT. FINISH PER PLANS
- (1) HOUR FIRE RATED WALL; SEE SHEET A7.01 FOR MORE INFORMATION
- (2) HOUR FIRE RATED WALL; SEE SHEET A7.01 FOR MORE INFORMATION
- (A1X1) WALL TAG; REFER TO SHEET A7.01 FOR MORE INFORMATION
- (A1D1) DOOR TAG; REFER TO SHEET A8.11 FOR MORE INFORMATION
- (A) NEW GRID; SEE STRUCTURAL
- (A) EXISTING GRID; SEE STRUCTURAL
- - - PROPERTY LINE



5880 ADAMS

5880 ADAMS BLVD CULVER CITY CA 90232

CORE & SHELL

PROJECT # 23.022

SPR SUBMITTAL

PERMIT #

REV	DATE	REMARK

ARCHITECT:  
EVAN RAABE ARCHITECTURE STUDIO  
EVAN RAABE, AIA, NCARB, BC22671  
2121 EAST 7TH PLACE, UNIT 201  
LOS ANGELES, CA 90021  
EVAN@ERA.STUDIO

OWNER:  
REDCAR PROPERTIES LTD.  
2341 MICHIGAN AVE.  
SANTA MONICA, CA 90404

STRUCTURAL:  
GHANIM STRUCTURAL ENGINEERING  
888 N. FAIR OAKS AVE., SUITE F,  
PASADENA, CA 91103  
(626) 407-2224

MEP:  
LAM + TEA ENGINEERING  
100 MLK BLVD, SUITE 207  
CHATTANOOGA, TN 37405  
615.208.2833 x338

CIVIL:  
SHERWOOD DESIGN ENGINEERS  
2548 MISSION ST.  
SAN FRANCISCO, CA 94110  
415.677.7300 x343

LIGHTING:  
ALAN NOELLE ENGINEERING  
3639 E HARBOR BLVD # 204,  
VENTURA, CA 93001  
805.563.5444

REGISTRATION:

# ERAS

evan raabe architecture studio

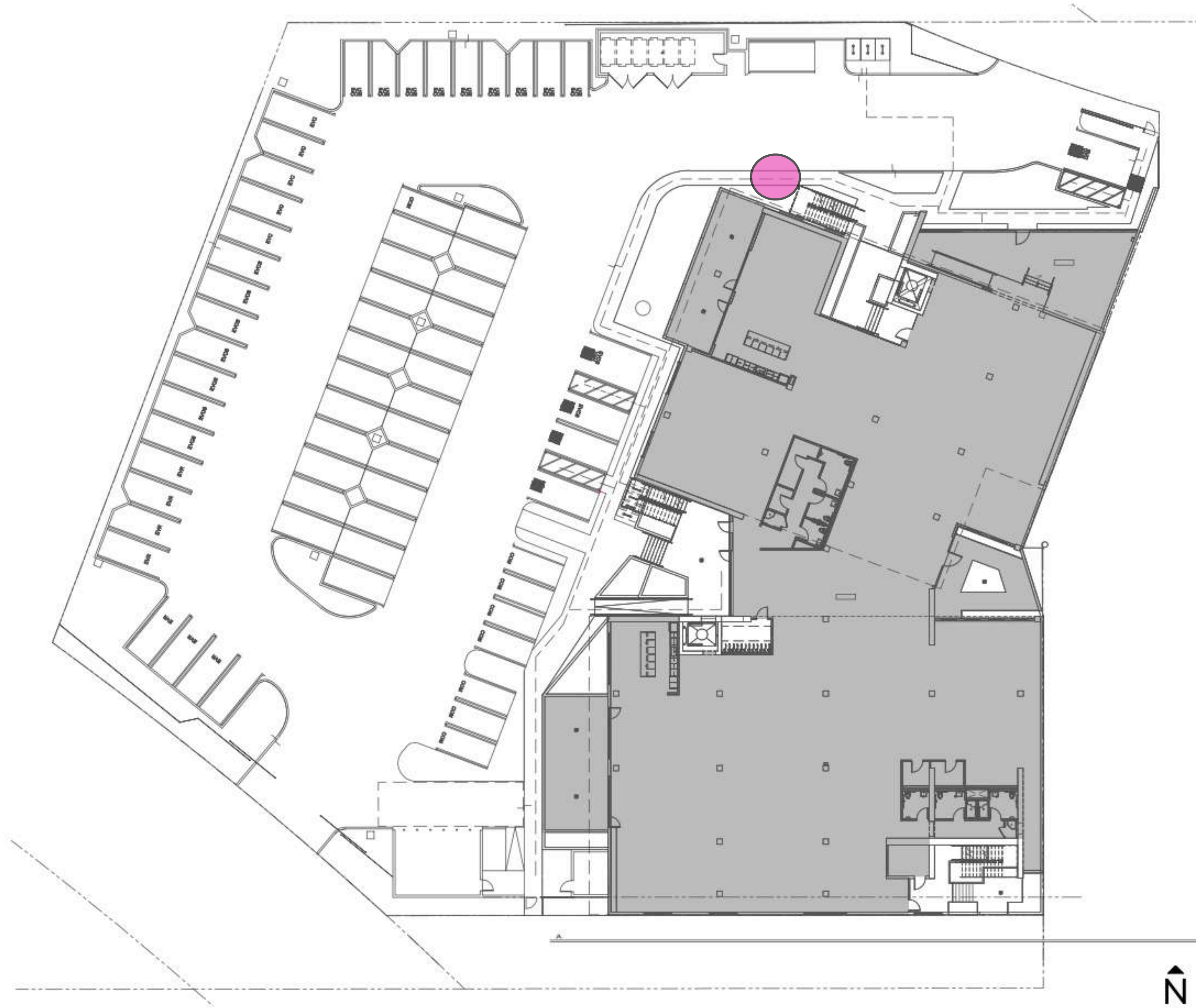
2121 EAST 7TH PLACE, SUITE 201  
LOS ANGELES, CA 90021  
HI@ERA.STUDIO

## A2.01T1b

FIRST FLOOR PLAN Copy 1

THIS MATERIAL IS OWNED AND IS THE SOLE AND EXCLUSIVE PROPERTY OF EVAN RAABE ARCHITECTURE STUDIO AND IS SUPPLIED TO THE CLIENT ON A CONFIDENTIAL BASIS. SOLELY FOR USE IN CONNECTION WITH THE JOB IDENTIFIED HEREIN. FEDERAL LAW PROHIBITS THE REPRODUCTION, DISPLAY, SALE OR OTHER DISTRIBUTION OF THIS DOCUMENT WITHOUT THE EXPRESS WRITTEN CONSENT OF EVAN RAABE ARCHITECTURE STUDIO.

# SITE MAP





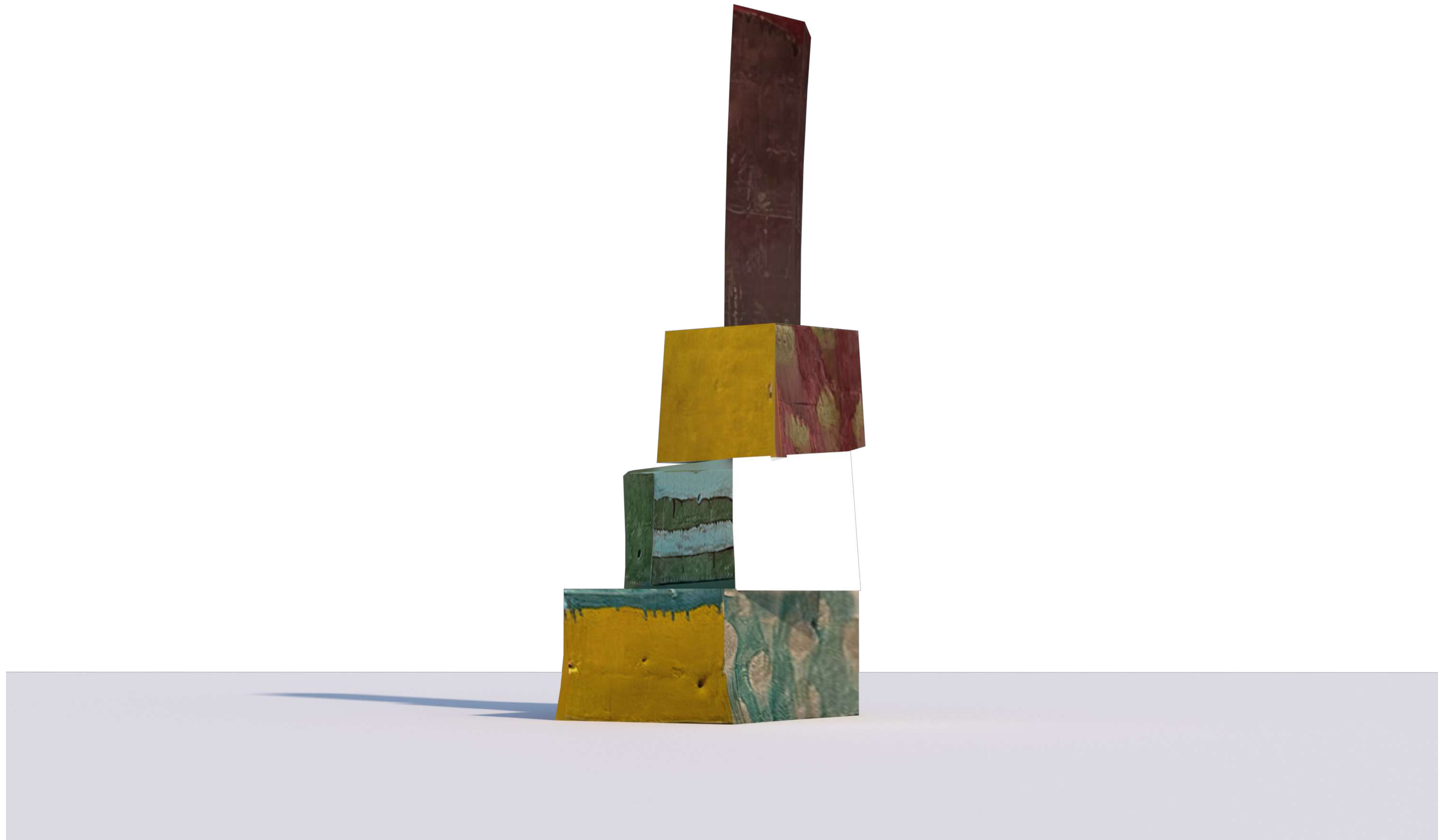
# FRONT VIEW



# LEFT SIDE VIEW



# RIGHT SIDE VIEW



# BACK VIEW





LB

HUN CHUNG LEE

## ARTIST BIO



**Lee Hun Chung** (이헌정), born in 1967 in Seoul, South Korea, is a renowned artist celebrated for his innovative work with ceramics and concrete. His creations range from small, intricate objects to large-scale installations. Lee blends modern artistic practices with traditional techniques and colors inspired by the Joseon Dynasty. He earned his BFA in ceramic sculpture from Hongik University in Seoul (1986–1991) and later pursued further studies in both San Francisco and Korea, culminating in a Ph.D. in architecture from Kyung-Won University in Gyeonggi-do, South Korea.

# ARTIST STATEMENT



**Hun Chung Lee's** public art sculpture at 5880 Adams Blvd in Culver City is a striking fusion of form and color, embodying the creative spirit that flows through the neighborhood. Lee's stacked, vibrant blocks evoke an abstract yet inviting presence, blending industrial textures with organic, earthy tones that speak to Culver City's dual identity as both a hub of production and a community grounded in innovation. As a center for creative office space, 5880 Adams Blvd hosts tenants in industries like production, design, and architecture —businesses that mirror the sculptural piece's balance of structure and creativity. The building itself, a contemporary mix of exposed brick and modern concrete, serves as an ideal backdrop for Lee's work, complementing the area's history while embracing its future as a space for forward-thinking enterprises.

PAST WORK



# PAST WORK



# PAST WORK



PAST WORK

Hun Chung Lee  
**California**



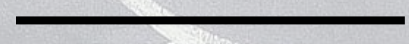
# PROJECT BUDGET

Artist Commission	\$40,000
Fabrication	\$13,500
Engineering Approvals	\$2,500
Transport/Installation/Delivery	\$3,500
Consulting Fees	\$8,000
Conservation/Maintenance Reports	\$2,500
Contingency	\$10,000
<b>Total:</b>	<b>\$80,000</b>

**Mandated Budget: \$80,000**







LeBASSE Projects

2525 HYPERION AVE, STE C

LOS ANGELES, CA 90004

PHONE: (310) 283-1733

[WWW.LEBASSEPROJECTS.COM](http://WWW.LEBASSEPROJECTS.COM)

