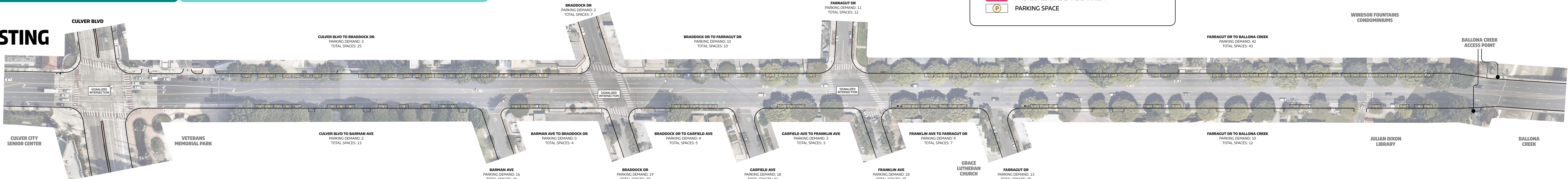


The conceptual alternatives presented here were approved by the City Council at their **May 24, 2024**, meeting. These concepts have been further refined based on community feedback received at additional outreach events held on **June 17, July 8, and July 9, 2025**. Conceptual design is subject to refinement during final engineering and construction.

### LEGEND

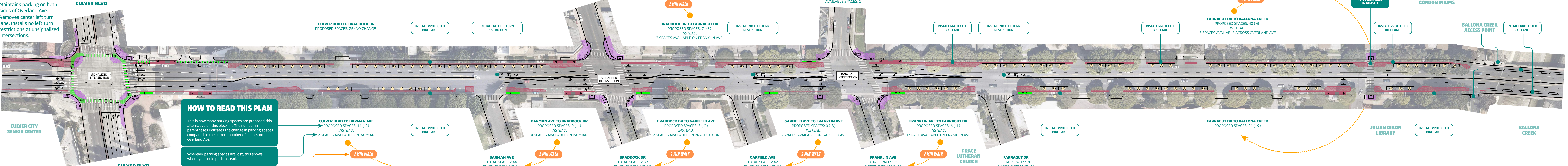
- HIGH-VISIBILITY BIKE LANE MARKINGS
- INTERSECTION, ADA, AND OTHER IMPROVEMENTS
- PROTECTED BIKE LANE BARRIER
- PARKING SPACE

### EXISTING



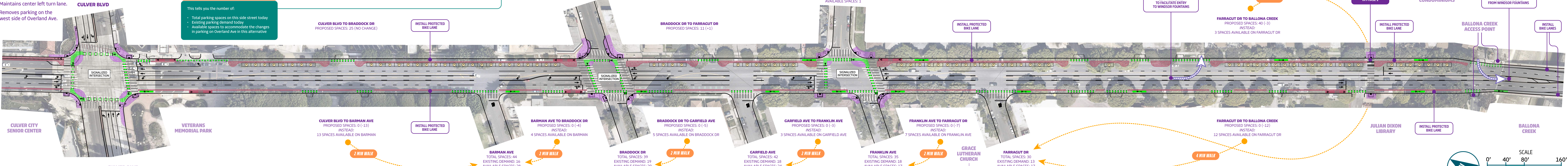
### ALTERNATIVE A

- + Maintains parking on both sides of Overland Ave.
- Removes center left turn lane. Installs no left turn restrictions at unsignalized intersections.



### ALTERNATIVE B

- + Maintains center left turn lane.
- Removes parking on the west side of Overland Ave.



#### HOW TO READ THIS PLAN

This is how many parking spaces are proposed this alternative on this block. The number in parentheses indicates the change in parking spaces compared to the current number of spaces on Overland Ave.

Wherever parking spaces are lost, this shows where you could park instead.

This is approximately how long it would take to walk to the alternative parking location.

This tells you the number of:

- Total parking spaces on this side street today
- Existing parking demand today
- Available spaces to accommodate the changes in parking on Overland Ave in this alternative

CITY TO COORDINATE WITH GRACE LUTHERAN CHURCH TO PROVIDE NEW LOADING AND BLUE ZONES ON FRANKLIN AVE AND FARRAGUT DR TO SUPPORT THE ORGANIZATION'S CONTINUED OPERATIONS.

