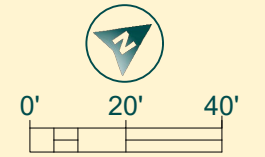
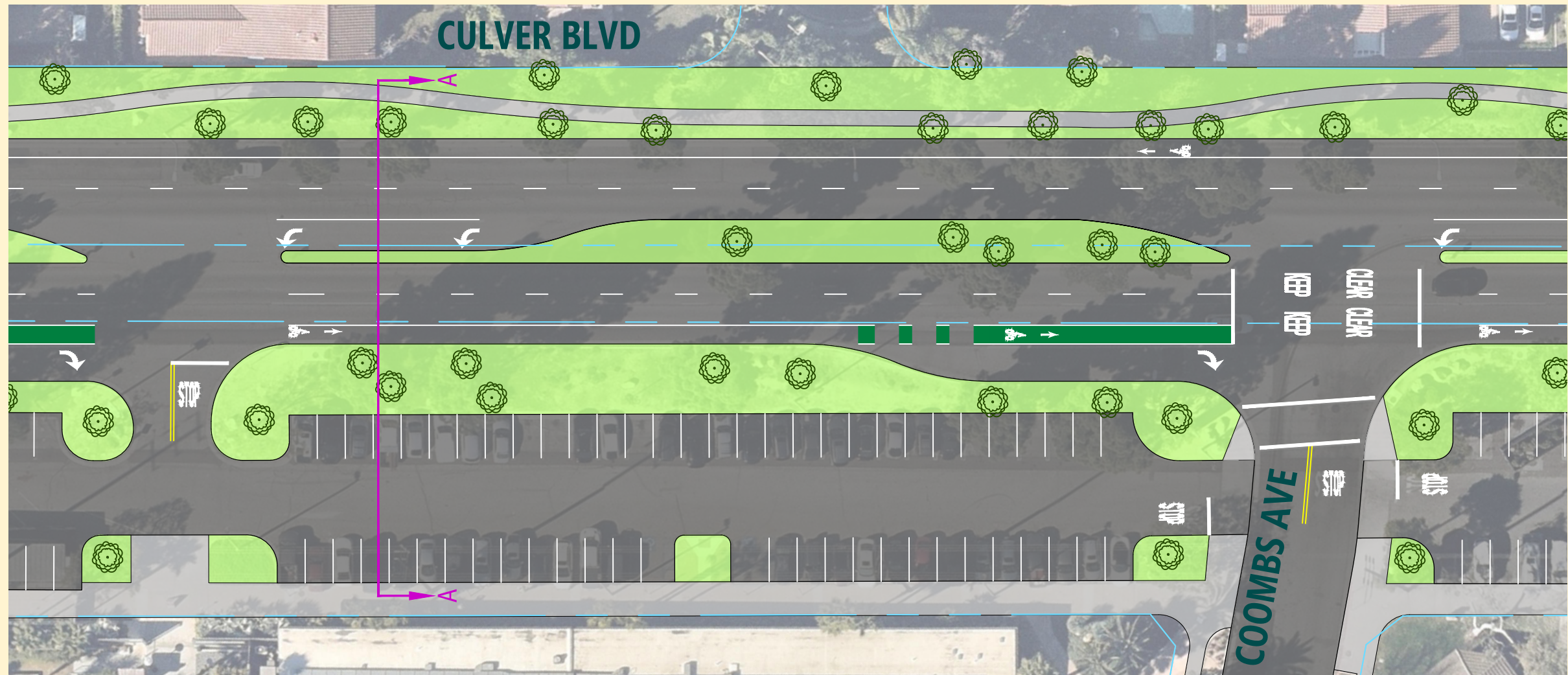
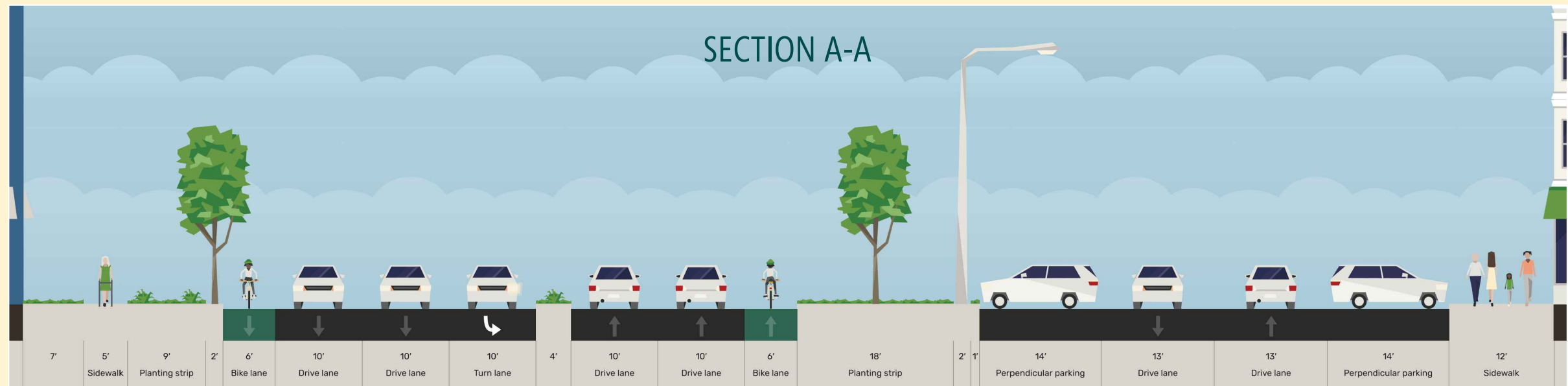


# OPTION 1



## KEY FEATURES

- CLASS II BIKE LANES
- NO CHANGES TO MEDIAN
- NO CHANGES TO PARKING AREA TO THE SOUTH
- 229 EXISTING PARKING LOT SPACES



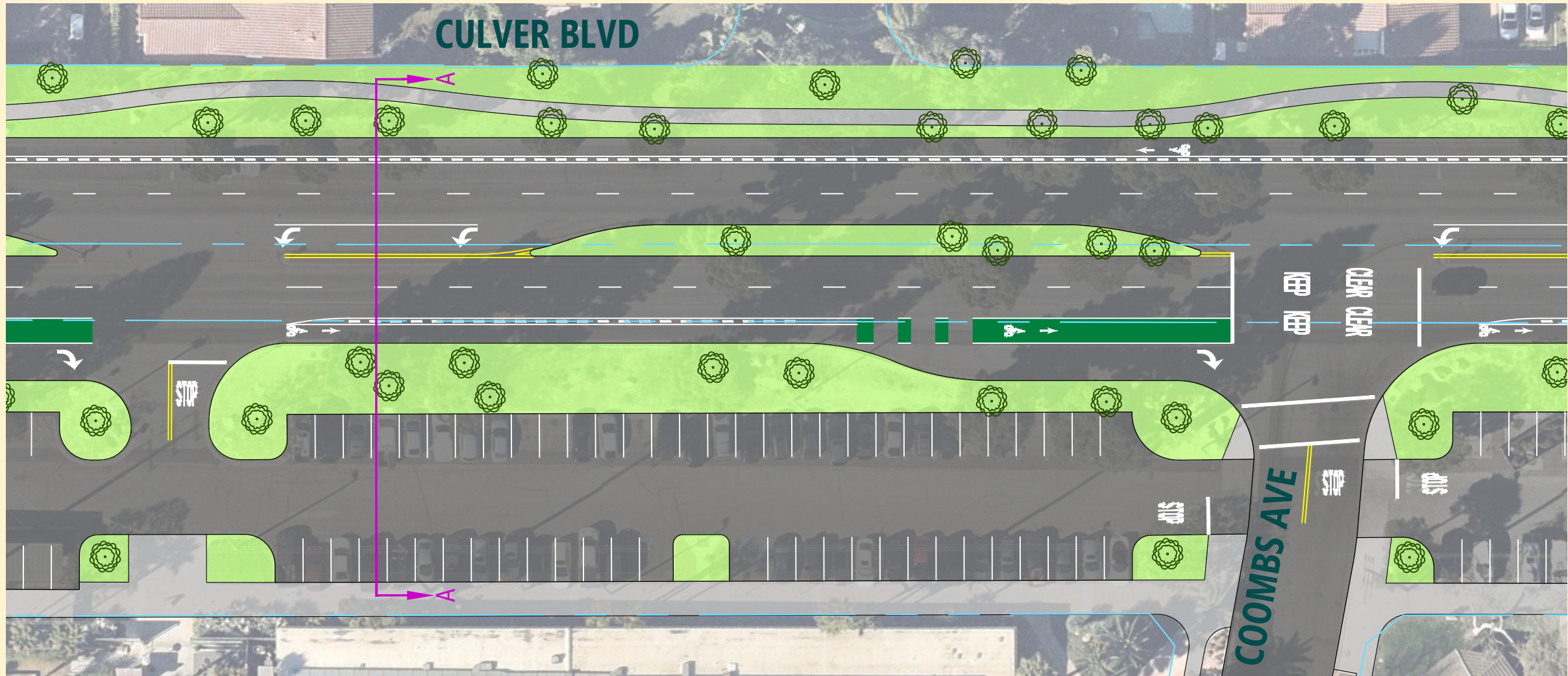
ELEND A TO OVERLAND  
OPTION 1 - CLASS IV BIKE LANES

CONNECT CULVER  
BOULEVARD PROJECT

**Michael Baker**  
INTERNATIONAL

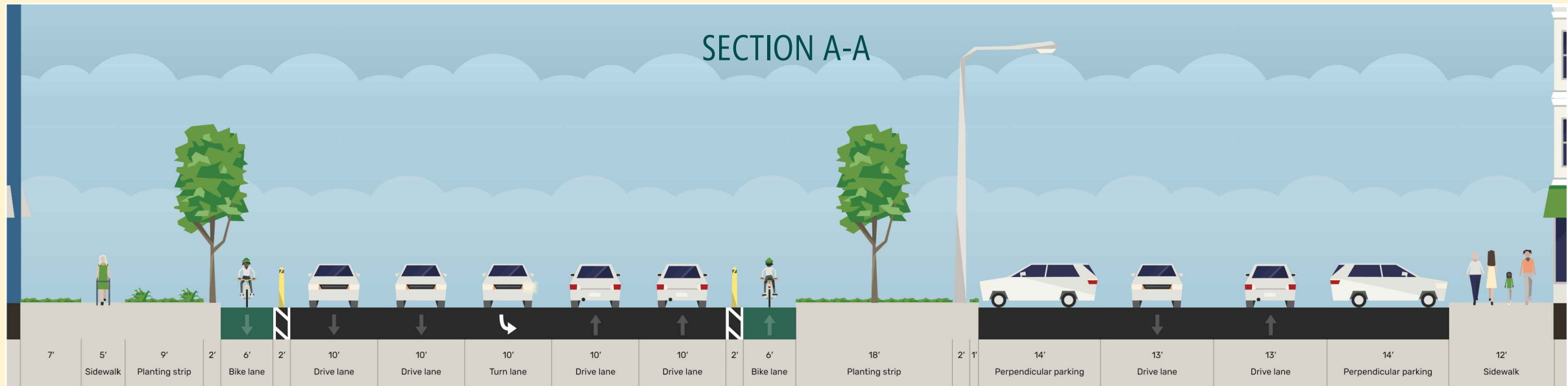
5050 Avenida Encinas  
Suite 260  
Carlsbad, CA 92008  
Phone: (760) 476-9193

# OPTION 2



## KEY FEATURES

- CLASS II BIKE LANE WITH VERTICAL AND HORIZONTAL SEPARATION FROM VEHICLES
- NARROWED MEDIAN BY 2' ON EACH SIDE
- NO CHANGES TO PARKING AREA TO THE SOUTH
- 229 EXISTING PARKING LOT SPACES



ELEND A TO OVERLAND  
OPTION 2 - CLASS II BIKE LANES

CONNECT CULVER  
BOULEVARD PROJECT

**Michael Baker**  
INTERNATIONAL

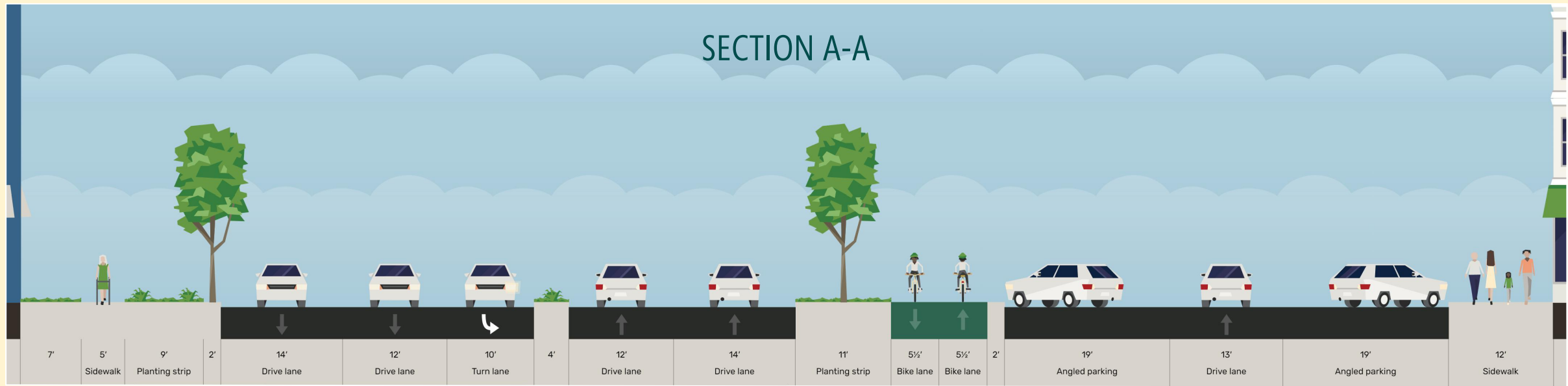
5050 Avenida Encinas  
Suite 260  
Carlsbad, CA 92008  
Phone: (760) 476-9193

# OPTION 3



## KEY FEATURES

- TWO WAY CYCLE TRACK WITH VERTICAL AND HORIZONTAL SEPARATION FROM VEHICLES
- NO CHANGES TO MEDIAN
- NO CHANGES TO TRAVEL LANE WIDTHS
- REMOVES TREES IN LANDSCAPED AREA SOUTH OF CULVER BLVD
- REQUIRES RELOCATION OF STREET LIGHTING ADJACENT TO PARKING LOT
- PARKING LOT CONVERTS TO ANGLED PARKING WITH ONE WAY DRIVE AISLE
- 229 EXISTING PARKING LOT SPACES
- 159 PROPOSED PARKING LOT SPACES
- 70 NET LOSS PARKING LOT SPACES



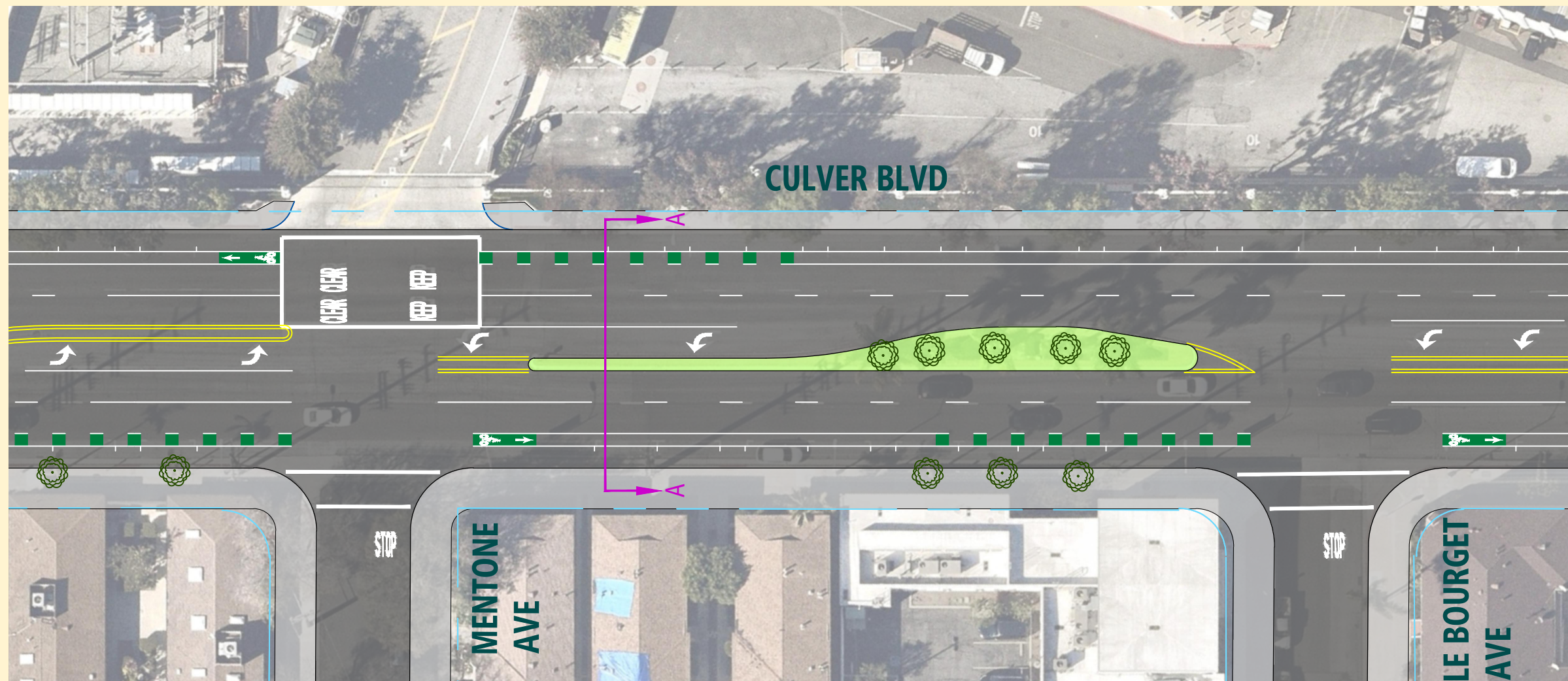
ELEND A TO OVERLAND  
OPTION 3 - CLASS IV TWO-WAY CYCLE TRACK

CONNECT CULVER  
BOULEVARD PROJECT

**Michael Baker**  
INTERNATIONAL

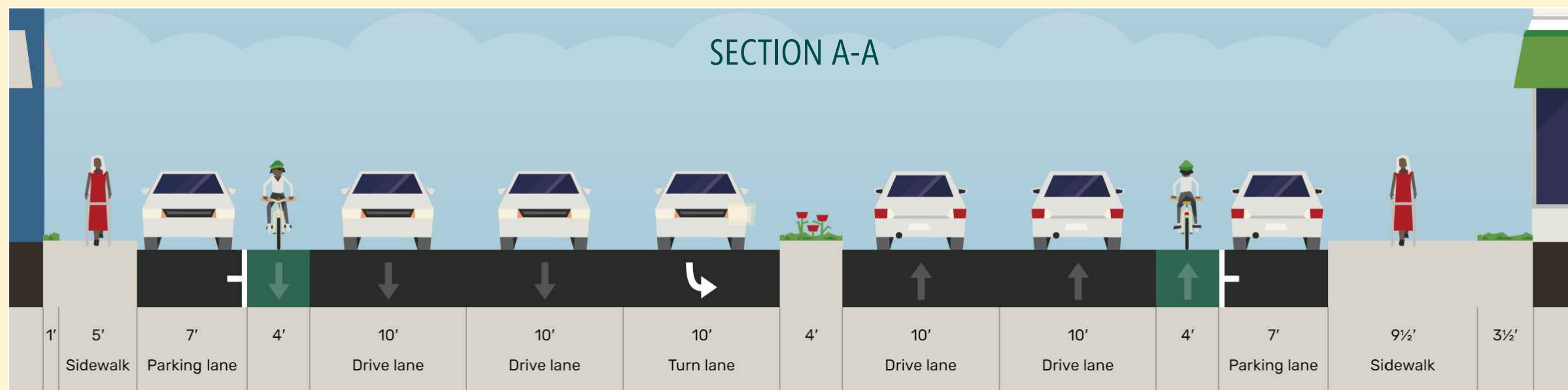
5050 Avenida Encinas  
Suite 260  
Carlsbad, CA 92008  
Phone: (760) 476-9193

# OPTION 1



## KEY FEATURES

- NARROW BIKE LANES
- NO CHANGES TO MEDIAN
- NO CHANGES TO PARKING
- 116 EXISTING ON STREET PARKING SPACES



OVERLAND TO DUQUESNE  
OPTION 1 - NARROW CLASS II BIKE LANES

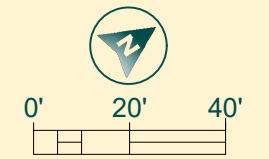
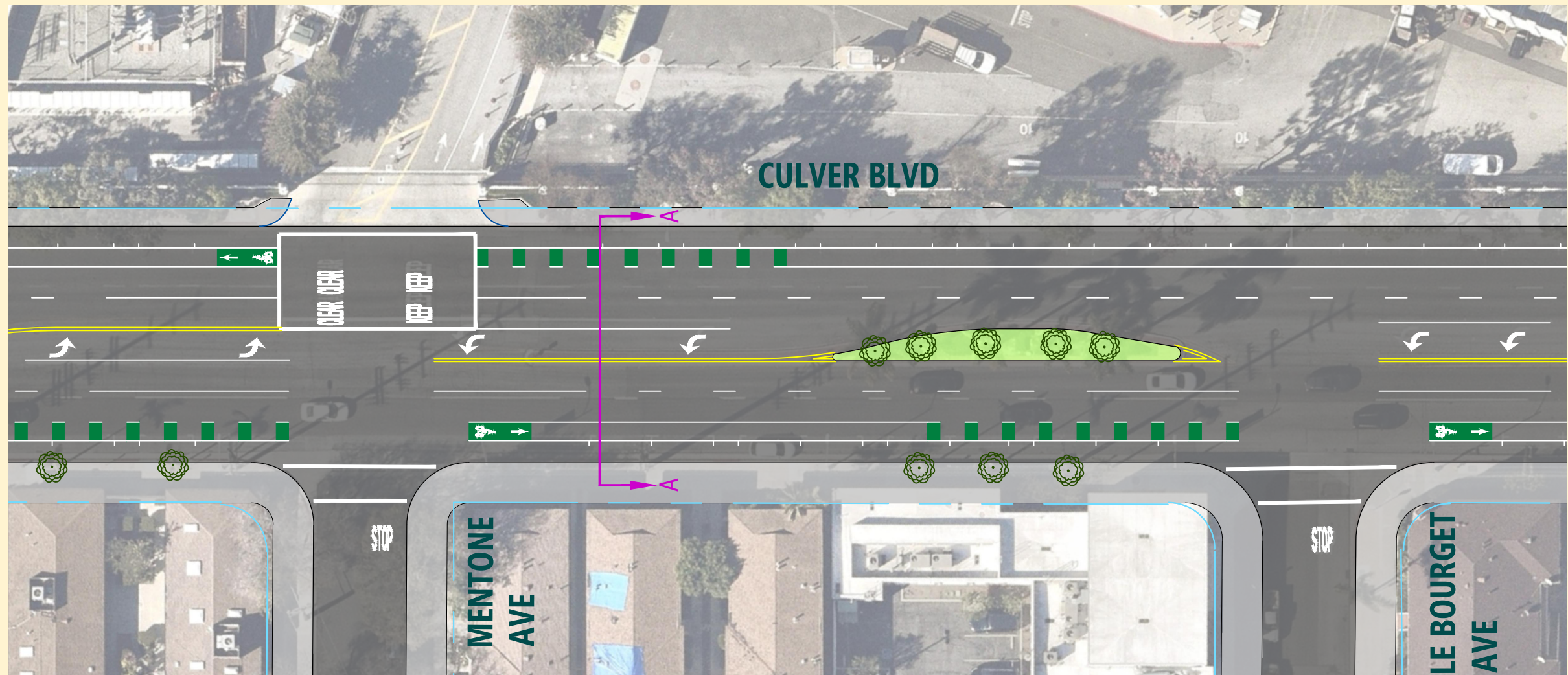
\*THIS OPTION IS NOT RECOMMENDED AS IT DOES NOT CONFORM TO MINIMUM WIDTHS PER CALTRANS HDM.

CONNECT CULVER  
BOULEVARD PROJECT

**Michael Baker**  
INTERNATIONAL

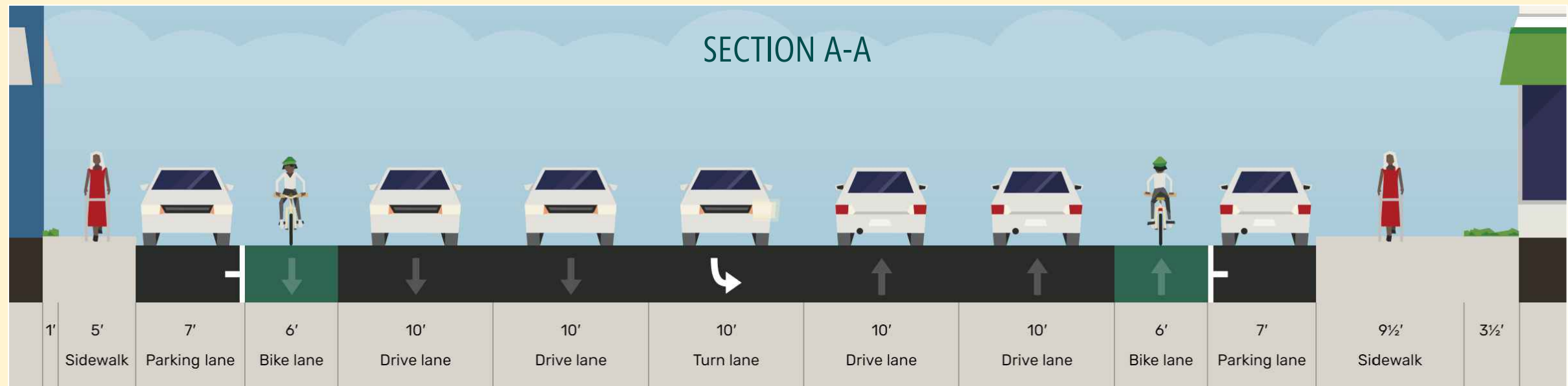
5050 Avenida Encinas  
Suite 260  
Carlsbad, CA 92008  
Phone: (760) 476-9193

# OPTION 2



## KEY FEATURES

- CLASS II BIKE LANES
- NARROWED MEDIAN BY 2' ON EACH SIDE
- NO CHANGES TO PARKING
- 116 EXISTING ON STREET PARKING SPACES



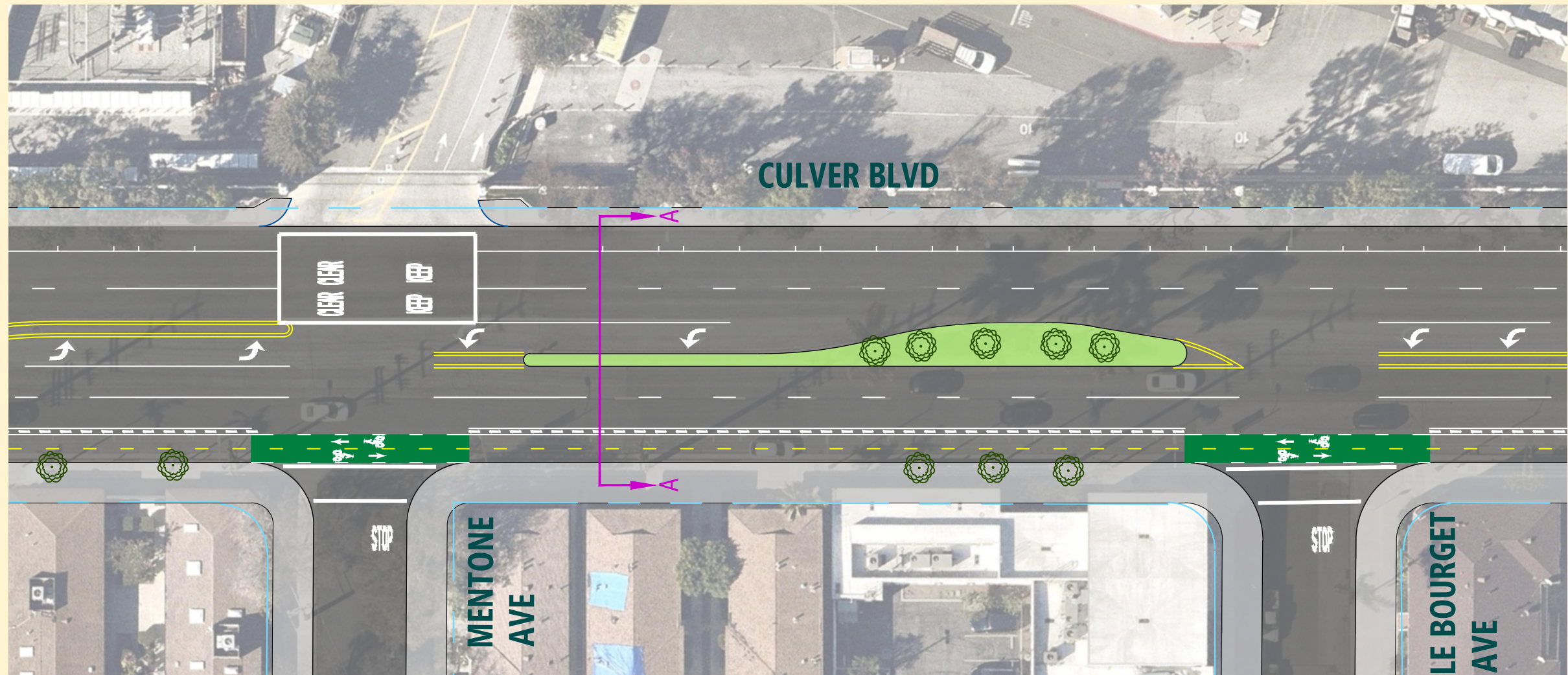
OVERLAND TO DUQUESNE  
OPTION 2 - CLASS II BIKE LANES

CONNECT CULVER  
BOULEVARD PROJECT

**Michael Baker**  
INTERNATIONAL

5050 Avenida Encinas  
Suite 260  
Carlsbad, CA 92008  
Phone: (760) 476-9193

# OPTION 3



## KEY FEATURES

- TWO WAY CYCLE TRACK WITH VERTICAL AND HORIZONTAL SEPARATION FROM VEHICLES
- NO CHANGES TO MEDIAN
- REMOVES PARKING ON SOUTH SIDE
- 116 EXISTING ON STREET PARKING SPACES
- 58 PROPOSED ON STREET PARKING SPACES
- 58 NET LOSS ON STREET PARKING SPACES



OVERLAND TO DUQUESNE  
OPTION 3 - CLASS IV TWO WAY CYCLE TRACK

CONNECT CULVER  
BOULEVARD PROJECT

**Michael Baker**  
INTERNATIONAL

5050 Avenida Encinas  
Suite 260  
Carlsbad, CA 92008  
Phone: (760) 476-9193

# Overland to Duquesne - Option 4

