



# GPU DELIVERABLES AND ENGAGEMENT SUMMARY

---

As of June 2021

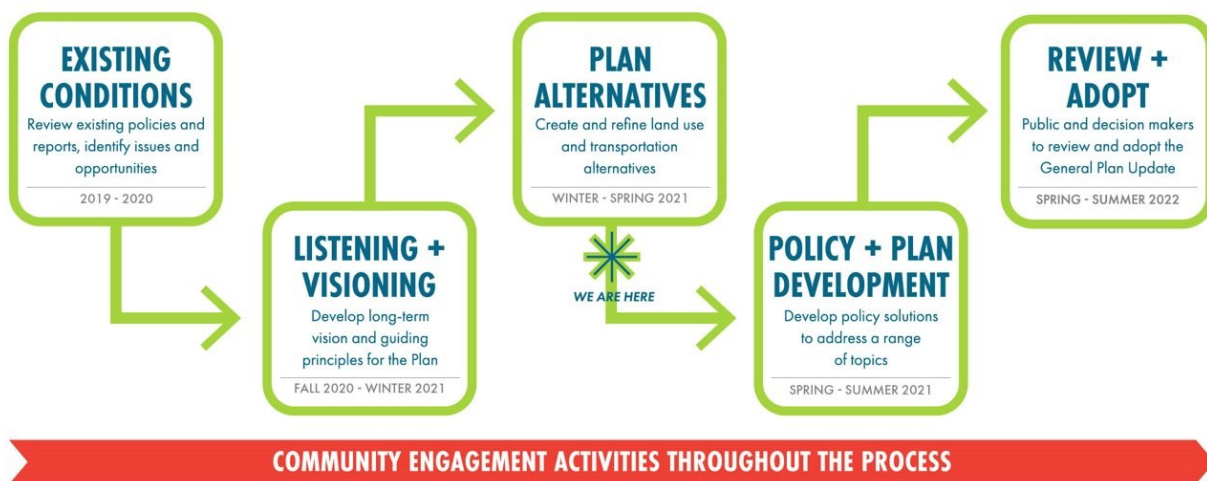


# Introduction

To inform Culver City's general plan, the community's blueprint for meeting its long-term vision for 2045, the General Plan Update (GPU) team prepared various reports on topics related to the general plan and facilitated various community engagement events and opportunities. These deliverables include existing conditions reports that describe the city's baseline conditions as of 2019 and other reports and plans to supplement the GPU process.

Engagement events and opportunities include advisory body meetings, community workshops, online engagement, and an educational forum with micro surveys. These engagement opportunities inform the goals and vision for the GPU and are also meant to foster public ownership of the General Plan.

Where available, documents, event summaries, and other resources are linked throughout.



# Summary of Deliverables

## Existing Conditions Reports

The consultant team developed existing conditions reports to support City staff, residents, and stakeholders in understanding Culver City's existing conditions as of 2019. The baseline of information presented in these reports and accompanying [educational forum video series](#) informs how the GPU team develops land use and policy alternatives for the GPU. They will show a baseline level of information in Culver City to compare the community's conditions throughout the GPU horizon to 2045. The following list shows the published and remaining reports. Since the reports are on 2019 existing conditions, they do not reflect the sudden and wide-reaching impacts of the COVID-19 Pandemic on Culver City. Each report was updated with a [COVID-19 memo](#) explaining the limitation.



## Completed

- [Mobility and Transportation](#) – Summarizes Culver City's transportation system, including the roadway network, public transit systems, bicycle and pedestrian infrastructure, and emerging transportation technology.
- [Socioeconomic Profile and Market Analysis](#) – Evaluates trends and conditions in the Culver City economy to anticipate future development potential and inform its planning process. It has three sections: Demographic and Socio-Economic Profile; Real Estate Market Analysis; and Fiscal Health Assessment.
- [Land Use and Community Design](#) – Describes existing land uses in Culver City, land use regulations, growth projections, development projects, and overall character and design of the city, neighborhoods, and corridors.
- [Environmental Background Report](#) – Discusses existing environmental conditions in Culver City, including noise, water resources and quality, biological resources, cultural resources, and hazards.
- [Housing Element](#) – Summarizes population, household, and housing inventory and market characteristics to guide the Housing Element update. It includes analyses on housing affordability gaps and assistance needs for cost-burdened households, overcrowded households, and groups with special needs.
- [Arts, Culture, & Creative Economy](#) – Describes Culver City's historic development as a creative industry hub. It includes an inventory of the assets, policies, and programming that exist today.
  - [Cultural Case Studies](#) – Summarizes examples of cities around the country with constructive policies or tactics for supporting arts and culture. This document supplements the Arts, Culture, & Creative Economy report.
- [Parks, Public Facilities, and Public Services](#) – Describes key public services and facilities that Culver City provides to residents, such as parks, fire protection, emergency services, schools, government facilities, and civic and cultural facilities.
- [Infrastructure](#) – Evaluates the network of utilities that protect and support the community, including water, storm water, electricity, natural gas, and other infrastructure systems.
- [Climate Hazards](#) – Describes historical and projected trends for climate hazards within Culver City. It summarizes the best available data for temperature and precipitation change, urban flooding, extreme heat, drought, air quality, and the nature, frequency, and magnitude of the hazards in the region.
- [Community Health and Environmental Justice](#) - Presents the preliminary findings of the Senate Bill 1000 (SB 1000 or “Planning for Healthy Communities Act”) environmental justice and community health screening. Includes identification of SB 1000 Priority Neighborhoods and key health conditions that may be addressed through the adoption of an environmental justice element in the General Plan.

- [Community Greenhouse Gas Inventory Report](#) – Presents an inventory of community-wide greenhouse gas (GHG) emissions in Culver City in 2019 and is intended to help with identification of cost-effective GHG-reduction strategies in policy areas over which the City has significant influence.
- [Municipal Greenhouse Gas Inventory Report](#) – Provides an inventory of GHG emissions for municipal operations in 2019 and is intended to help with identification of cost-effective GHG-reduction strategies in policy areas over which the City has considerable influence.

## In Process

- Smart Cities – Describes Culver City's programs, policies, and infrastructure that make it a "smart city," a city that applies solutions based on data to improve community members' quality of life and overall outcomes. It also identifies recommendations to incorporate or improve on smart city solutions.

## Other Documents

### Completed

- [Picture Culver City Fact Sheet](#) ([Spanish](#) version)
- [Community Engagement Plan](#) – Outlines a plan to bring the community together as collaborators in the process, with a goal of broad involvement – especially of those who are too often left out of planning processes. This plan was developed to support the City's commitment to ensuring public ownership of the General Plan.
- [Community Vision and Guiding Principles](#) – Through community meetings, online surveys, and discussions with community stakeholders, the General Plan Advisory Committee, Technical Advisory Committees, and City Council, the community explored visions for the future of Culver City, what makes the city unique and special, and what things people would like to change. The document summarizes community aspirations and priorities into Community Vision for the Future, Core Values, and key Guiding Principles for the General Plan.
- [Reimagining Public Safety in Culver City: Community Survey Results](#) – In response to numerous community requests to review the Culver City Police Department budget and use of force policies, Culver City began reviewing its approach to public safety. The process included a community survey, summarized in this report, to identify issues and priorities related to policing and public safety in Culver City.
- [UCLA Comprehensive Project: Analysis and Recommendations for the Culver City General Plan Update](#) – Each year, a team of urban planning master's students at UCLA research and analyze planning challenges to produce a high-quality report with recommendations for action for a client organization. Known as the Comprehensive Project, in the 2019-2020 academic year UCLA collaborated with the City of Culver City on topics connected to the City's General Plan Update.

- [Advancing Community Engagement in Culver City](#)
- [Toward a Proactive Local Affordable Housing Agenda](#)
- [Flattening the Traffic Curve: Infrastructure-Light Solutions](#)
- [Complete Streets for Culver City](#)
- [Tapping Out in Culver City: Re-Envisioning the Inglewood Oil Field](#)
- [Urban Design Report: Reimagining the Transit Gateway of Culver City](#)
- [City Council's Housing Element Guiding Principles](#)

## In process

- Land use and mobility alternatives and analysis
- Community-facing fact sheets
- Greenhouse gas educational video and survey
- Policy frameworks, performance metrics, funding matrix, and citywide targets and outcomes
- Draft Housing Element and Initial Study/Mitigated Negative Declaration
- Local Early Action Planning Grant housing production studies, including retail demand model, property assessment, concept design studies, development feasibility analysis, incentives and standards to increase housing production, and general plan integration
- Economic recovery strategy and resilience best practices memo and policies and actions to be integrated into the GPU

## Upcoming

- Preferred direction memo for changes areas, growth projections memo
- General Plan outline, drafts and final documents, online comment form and matrix, E-Plan, Implementation Plan, Evaluation Plan, and Zoning Code assessment memo
- Environmental Impact Report drafts and final documents

# Summary of Engagement

Even before the GPU officially kicked off, the project team began its community engagement process, understanding that a robust and meaningful community engagement process is critical for ensuring that the GPU reflects the community's vision for 2045 and is successful. The community engagement process will continue through the end of the GPU process, during the review and adoption phase.

## Past

- 36 [Stakeholder interviews](#)
- 4 [Pop-up meetings](#)
- 16 [Speaker Series events](#)
- Project updates to City bodies
  - City Council (July 13, 2020)
  - Planning Commission (January 22, 2020)
  - Cultural Affairs Commission (August 18, 2020)
  - Committee on Homelessness (February 23, 2021)
- 8 [Online Educational Forum](#) videos and micro surveys on topic-specific existing conditions reports
- [Online Issues and Opportunities Visioning survey](#) (250+ responses)
- [Online Public Safety survey](#) (2,500+ responses)
- [Online Story Bank](#) (November 25, 2020 – June 13, 2021)
- [Online Land Use Alternatives Survey \(Spanish version\)](#) (April 29, 2021 – June 13, 2021)
- [Online Mobility Alternatives Survey](#) (May 27, 2021 – June 7, 2021)
- [City Council visioning study session](#) (September 3, 2019)
- [City Council/Planning Commission land use strategies study session](#) (January 27, 2021)
- [Planning Commission Housing Element study session](#) (May 12, 2021)
- 2 City Council meetings on Housing Element Guiding Principles ([March 22](#) and [April 12](#), 2021)
- [Community Visioning Festival Workshop](#) (150 participants)
- [Community Land Use Strategies Workshop](#) (Spanish interpretation) (90 participants)
- 2 [Community Land Use Alternatives Workshops](#) (Spanish interpretation) (80 participants)
- [Community Mobility Alternatives Workshop](#) (Spanish interpretation) (60 participants)

## Ongoing

- Volunteer communications network
- [Online Engagement Availability Survey](#)
- [Interactive project website](#)
- 17 [General Plan Advisory Committee meetings](#) (Materials and summaries on each event page) (+4 scheduled through Fall 2021)
  - Review draft Housing Element (July 22, 2021)

- Economic development (August 12, 2021)
- Two meetings anticipated for draft policy review (Fall 2021)
- 13 [Technical Advisory Committees meetings](#) (Materials and summaries on each event page) (+7 scheduled through Fall 2021)

## Upcoming

- [City Council/Planning Commission meeting](#) to discuss single-family zoning and addressing exclusionary practices and direction on a Preferred Land Use Map. Alternatives presented will be refined to reflect community input collected between September 2019 and June 2021, including at GPAC and TAC meetings, and community workshops (June 23, 2021)
- Environmental Review Scoping Meeting (September 2021)
- Environmental Justice/Community Health Workshop in collaboration with University of California's Prytaneum team, Policy Survey, Tactical Urbanism Demonstration (Fall 2021)
- Planning Commission meetings to discuss the draft Housing Element (July 28, 2021, and November 10, 2021)
- City Council hearing to adopt the Housing Element and environmental clearance documents (December 13, 2021)
- The GPU team will plan 2022 events closer to the end of this year.