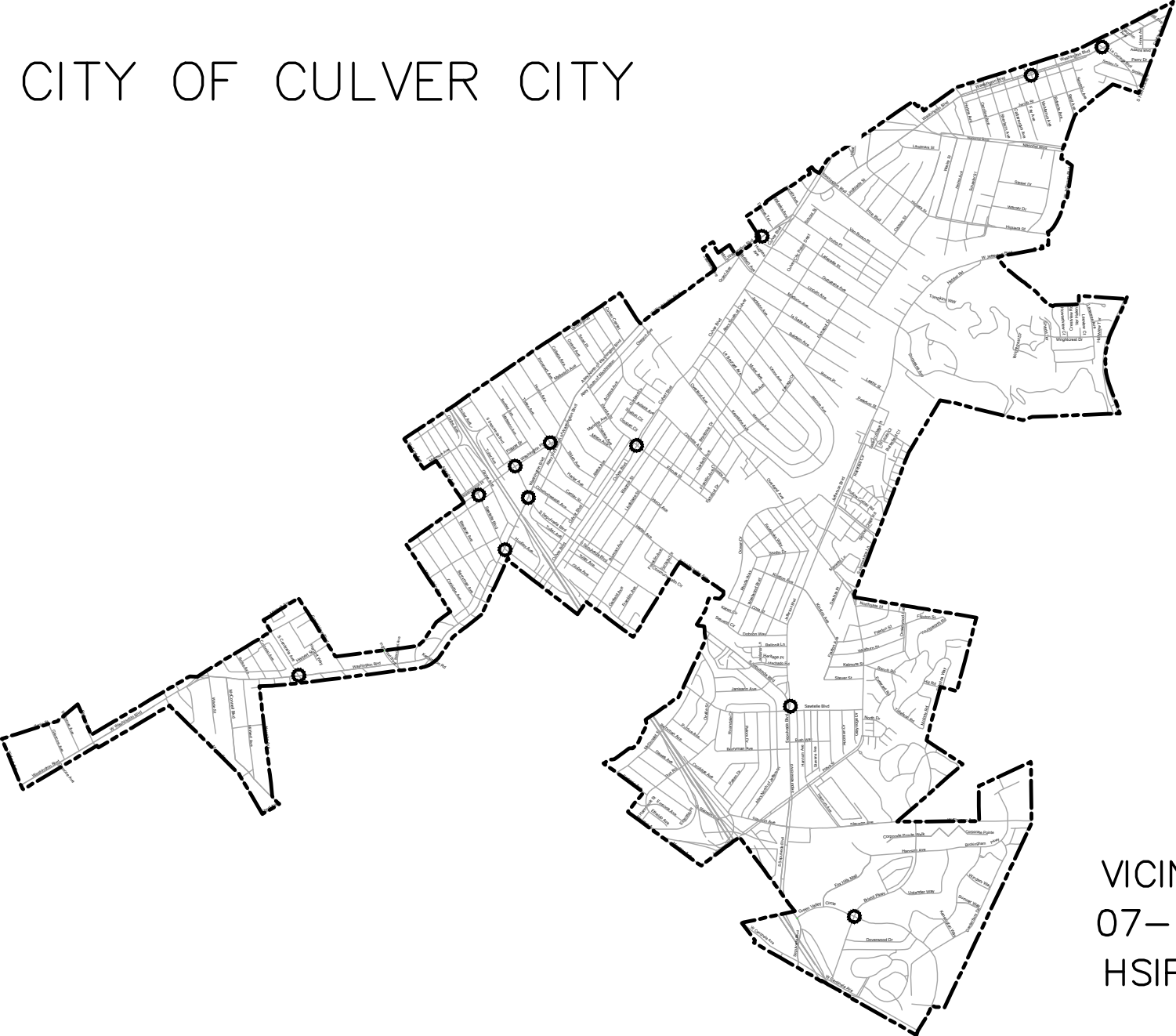


# CITY OF CULVER CITY



VICINITY MAP  
07-CULVER CITY-1  
HSIP CYCLE 7

## 07-CULVER CITY -1

### Highway Safety Improvement Program (HSIP), Cycle 7

Countermeasure: S6: Provide protected left turn phase (left turn lane already exists)

#### Sepulveda Boulevard/Washington Place



#### GENERAL WORK:

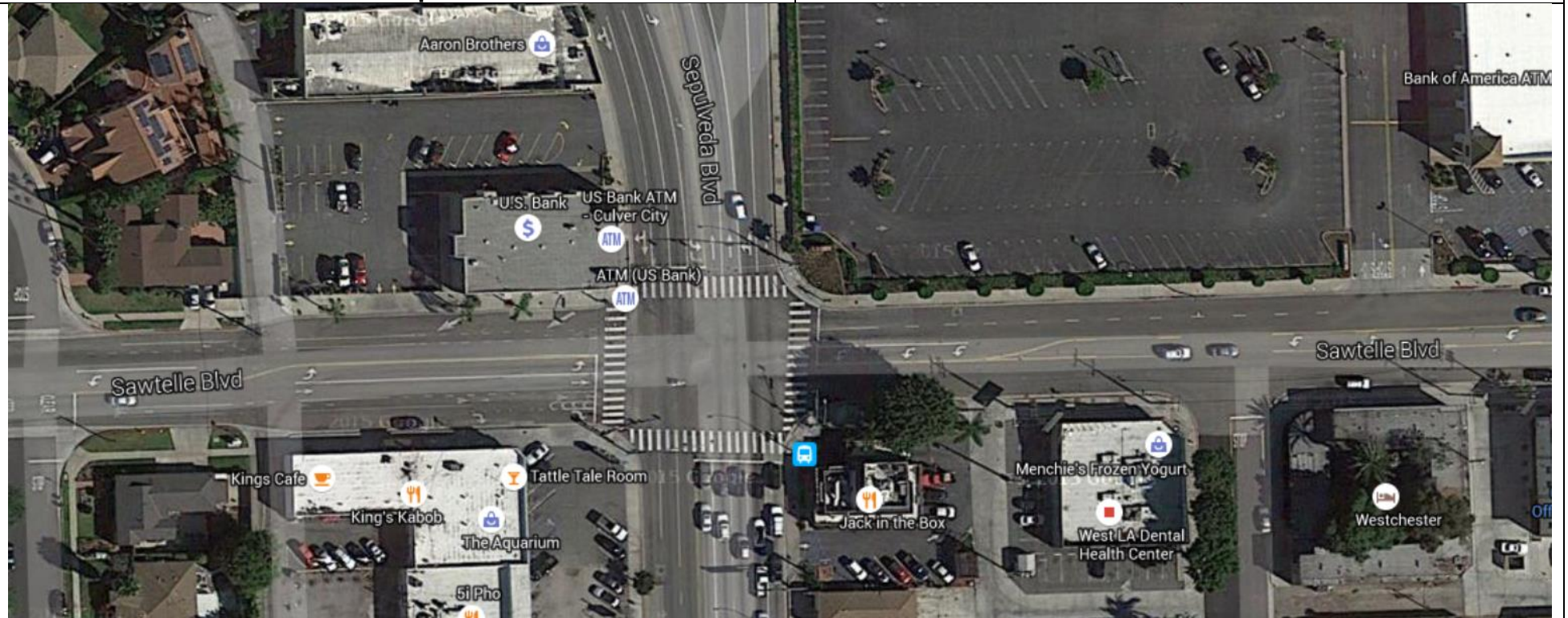
- Targeted pole and foundation removals
- New foundation and pole installations
- Signal mast arm removals
- New signal mast arm installations
- Luminaire mast arm removals
- New Luminaire mast arm installations
- 3 Section VEH HD removals
- New 4/5 Section VEH HD installations
- Bulldog PPB installations
- 2" Conduit installations
- Controller cabinet upgrade
- Video Image Detection installations
- Opticom EVP removals and installations

## 07-CULVER CITY -1

### Highway Safety Improvement Program (HSIP), Cycle 7

Countermeasure: S6: Provide protected left turn phase (left turn lane already exists)

#### Sawtelle Boulevard/Sepulveda Boulevard



#### GENERAL WORK:

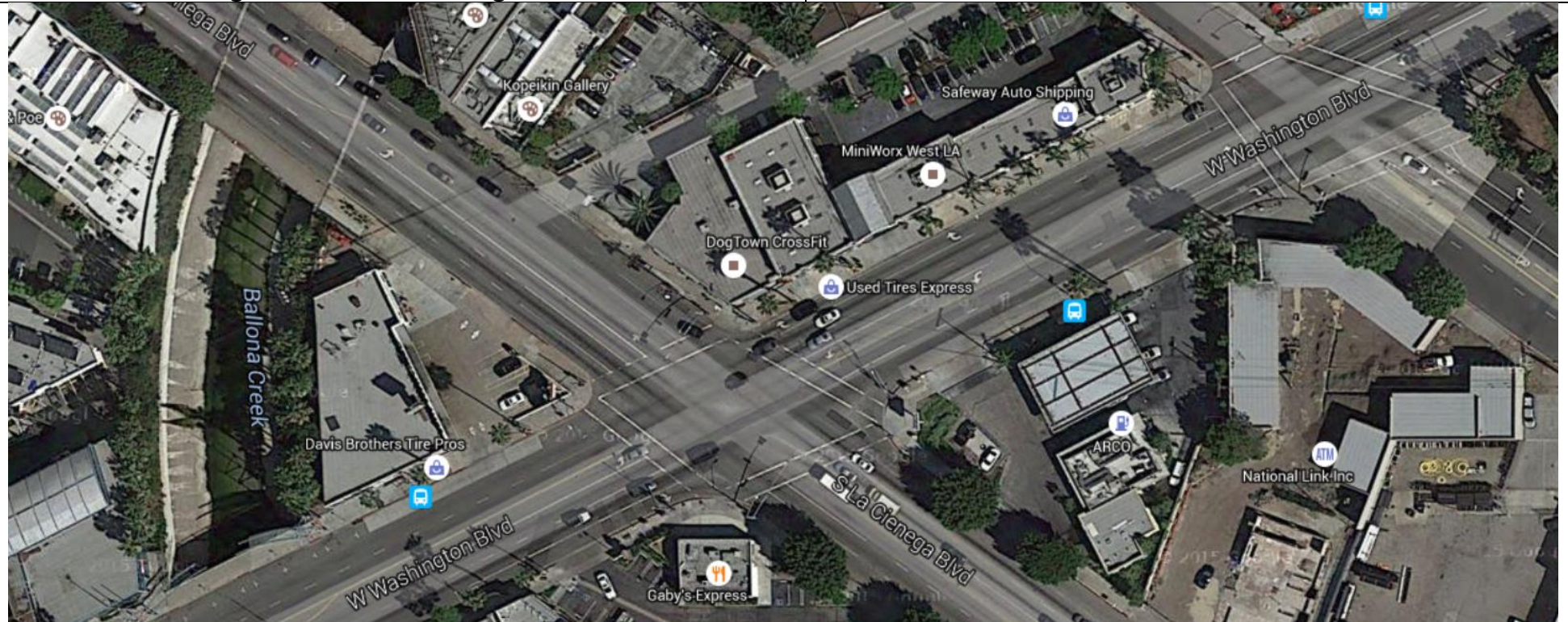
- Targeted pole and foundation removals
- New foundation and pole installations
- Signal mast arm removals
- New signal mast arm installations
- Luminaire mast arm removals
- New Luminaire mast arm installations
- 3 Section VEH HD removals
- New 4/5 Section VEH HD installations
- Bulldog PPB installations
- 2" Conduit installations
- Controller cabinet upgrade
- Video Image Detection installations
- Opticom EVP removals and installations

# 07-CULVER CITY -1

## Highway Safety Improvement Program (HSIP), Cycle 7

Countermeasure: S6: Provide protected left turn phase (left turn lane already exists)

### La Cienega Boulevard/Washington Boulevard



#### GENERAL WORK:

- Targeted pole and foundation removals
- New foundation and pole installations
- Signal mast arm removals
- New signal mast arm installations
- Luminaire mast arm removals
- New Luminaire mast arm installations
- 3 Section VEH HD removals
- New 4/5 Section VEH HD installations
- Bulldog PPB installations
- 2" Conduit installations
- Controller cabinet upgrade
- Video Image Detection installations
- Opticom EVP removals and installations

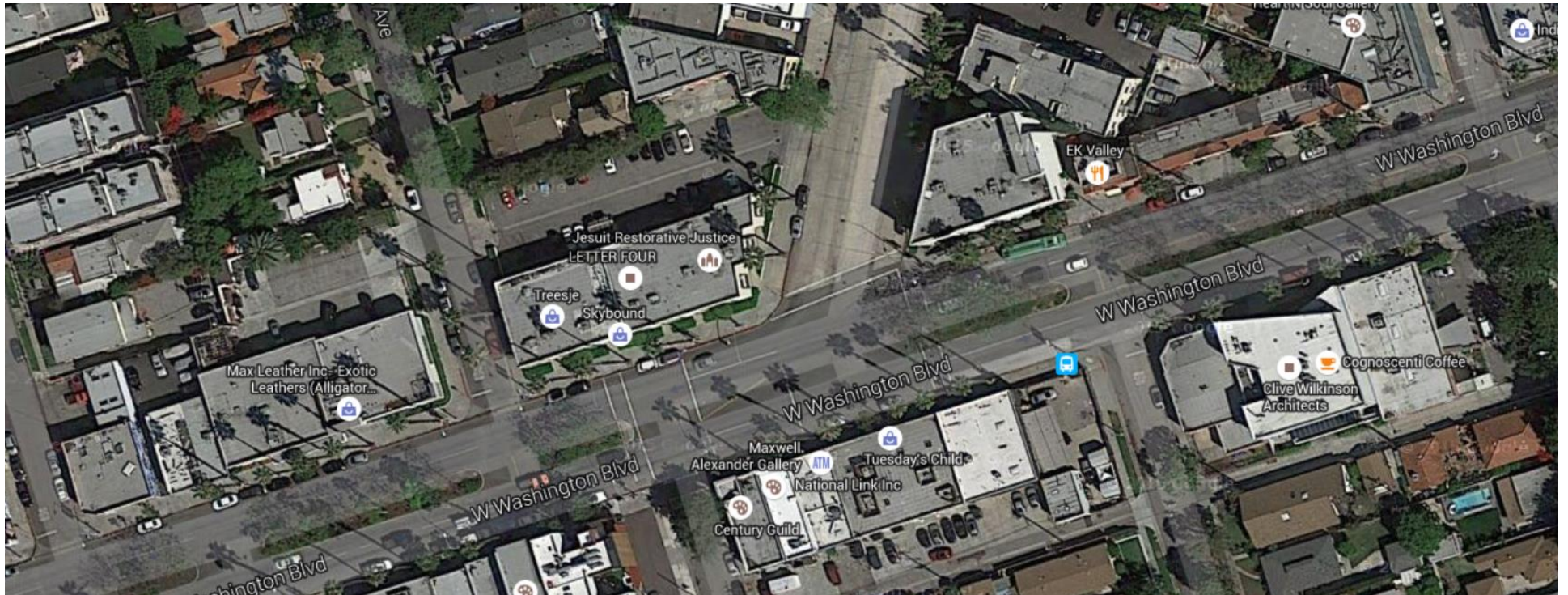
# 07-CULVER CITY -1

## Highway Safety Improvement Program (HSIP), Cycle 7

Countermeasure: S6: Provide protected left turn phase (left turn lane already exists)

### La Cienega Avenue-McManus Avenue/Washington Blvd

0



#### GENERAL WORK:

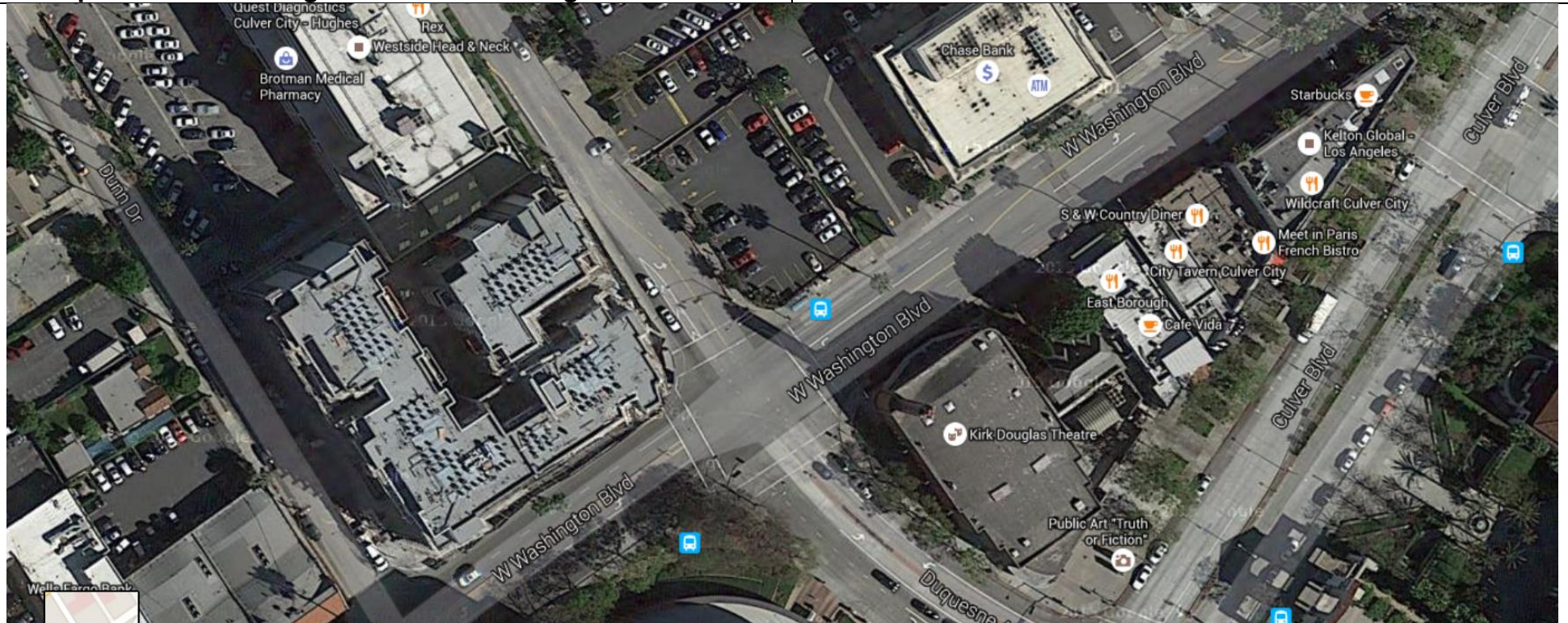
- Targeted pole and foundation removals
- New foundation and pole installations
- Signal mast arm removals
- New signal mast arm installations
- Luminaire mast arm removals
- New Luminaire mast arm installations
- 3 Section VEH HD removals
- New 4/5 Section VEH HD installations
- Bulldog PPB installations
- 2" Conduit installations
- Controller cabinet upgrade
- Video Image Detection installations
- Opticom EVP removals and installations

# 07-CULVER CITY -1

## Highway Safety Improvement Program (HSIP), Cycle 7

Countermeasure: S6: Provide protected left turn phase (left turn lane already exists)

### Duquesne Avenue-Hughes Avenue/Washington Boulevard



#### GENERAL WORK:

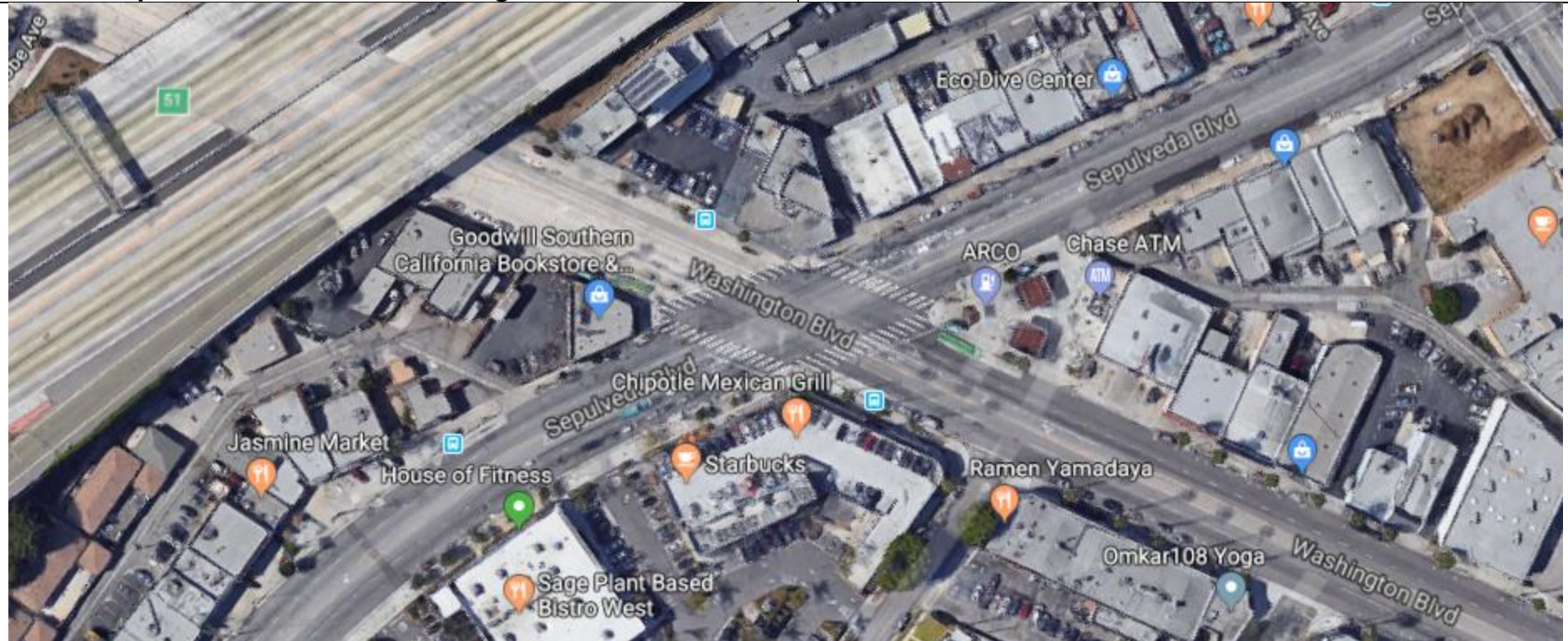
- Targeted pole and foundation removals
- New foundation and pole installations
- Signal mast arm removals
- New signal mast arm installations
- Luminaire mast arm removals
- New Luminaire mast arm installations
- 3 Section VEH HD removals
- New 4/5 Section VEH HD installations
- Bulldog PPB installations
- 2" Conduit installations
- Controller cabinet upgrade
- Video Image Detection installations
- Opticom EVP removals and installations

## 07-CULVER CITY -1

### Highway Safety Improvement Program (HSIP), Cycle 7

Countermeasure: S6: Provide protected left turn phase (left turn lane already exists)

#### Sepulveda Boulevard / Washington Boulevard



#### GENERAL WORK:

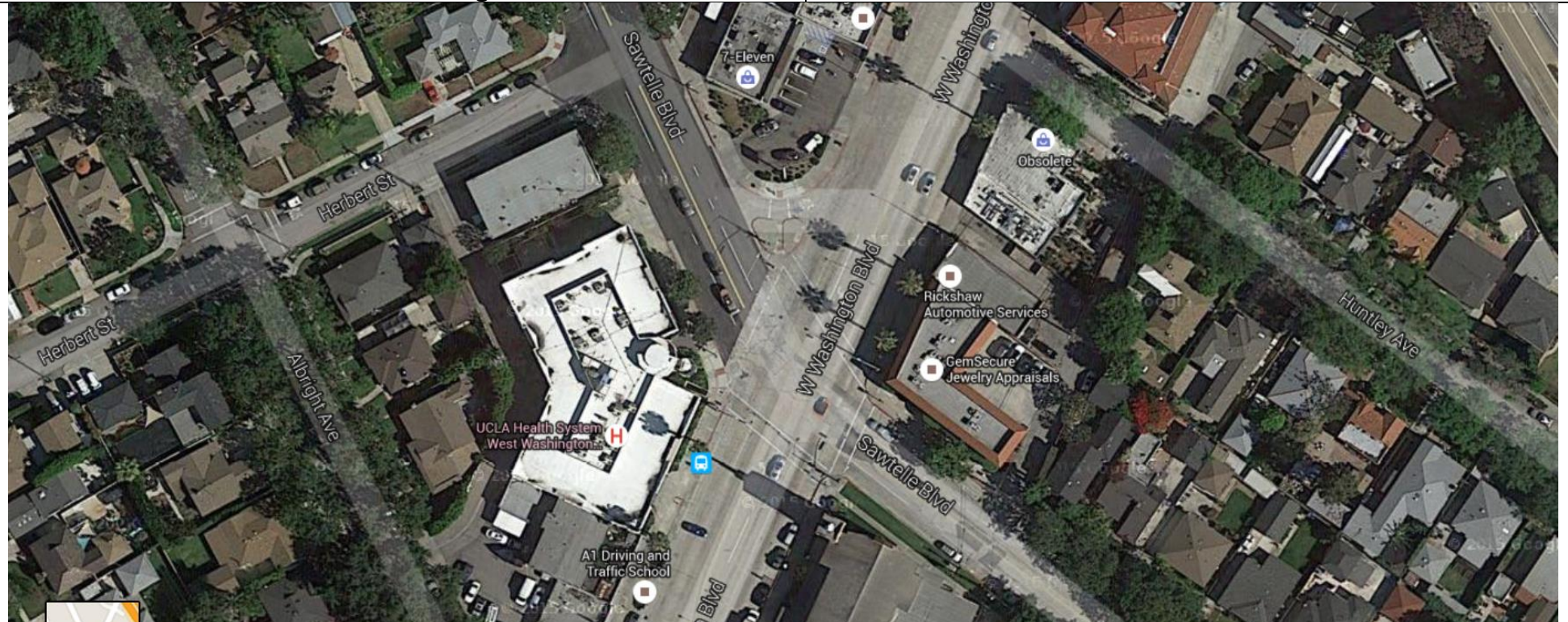
- Targeted pole and foundation removals
- New foundation and pole installations
- Signal mast arm removals
- New signal mast arm installations
- Luminaire mast arm removals
- New Luminaire mast arm installations
- 3 Section VEH HD removals
- New 4/5 Section VEH HD installations
- Bulldog PPB installations
- 2" Conduit installations
- Controller cabinet upgrade
- Video Image Detection installations
- Opticom EVP removals and installations

## 07-CULVER CITY -1

### Highway Safety Improvement Program (HSIP), Cycle 7

Countermeasure: S6: Provide protected left turn phase (left turn lane already exists)

#### Sawtelle Boulevard/Washington Boulevard



#### GENERAL WORK:

- Targeted pole and foundation removals
- New foundation and pole installations
- Signal mast arm removals
- New signal mast arm installations
- Luminaire mast arm removals
- New Luminaire mast arm installations
- 3 Section VEH HD removals
- New 4/5 Section VEH HD installations
- Bulldog PPB installations
- 2" Conduit installations
- Controller cabinet upgrade
- Video Image Detection installations
- Opticom EVP removals and installations

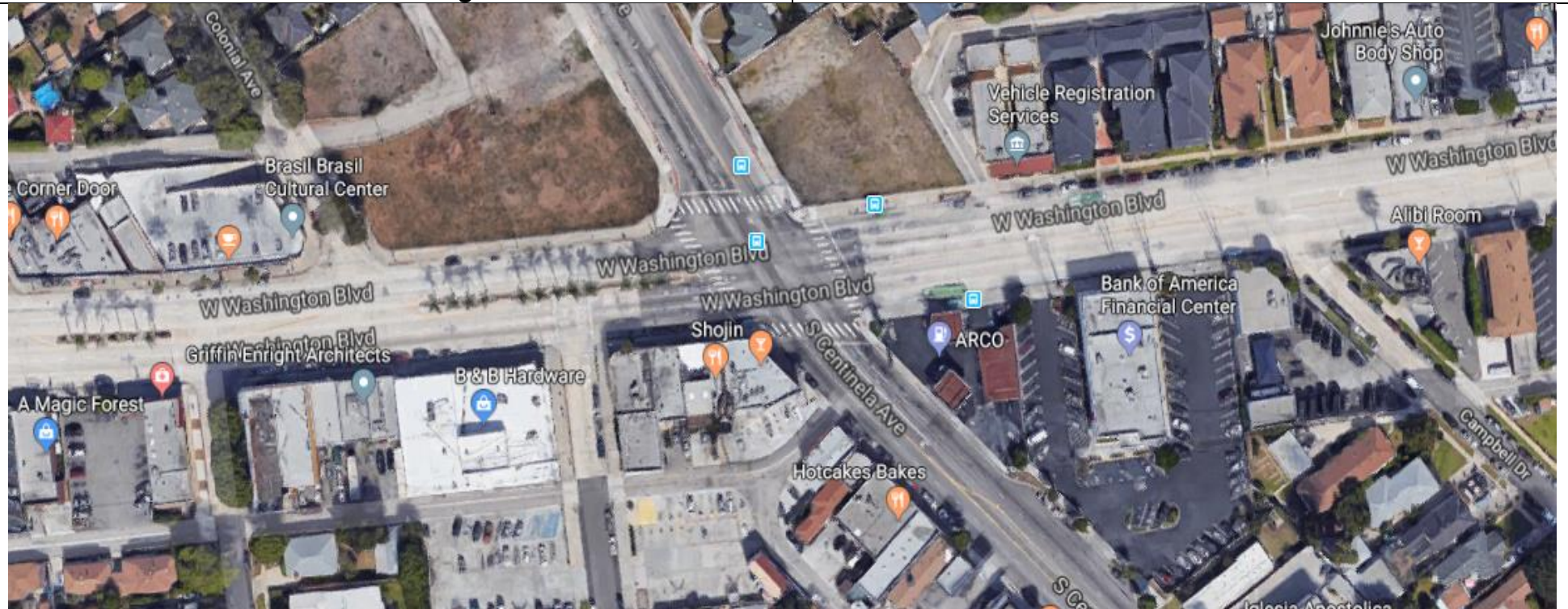


## 07-CULVER CITY -1

### Highway Safety Improvement Program (HSIP), Cycle 7

Countermeasure: S6: Provide protected left turn phase (left turn lane already exists)

#### Centinela Avenue/Washington Boulevard



#### GENERAL WORK:

- Targeted pole and foundation removals
- New foundation and pole installations
- Signal mast arm removals
- New signal mast arm installations
- Luminaire mast arm removals
- New Luminaire mast arm installations

- 3 Section VEH HD removals
- New 4/5 Section VEH HD installations
- Bulldog PPB installations
- 2" Conduit installations
- Controller cabinet upgrade
- Video Image Detection installations
- Opticom EVP removals and installations

## 07-CULVER CITY -1

### Highway Safety Improvement Program (HSIP), Cycle 7

Countermeasure: S6: Provide protected left turn phase (left turn lane already exists)

Washington Boulevard/Harter Avenue/  
Washington Place/Tilden Avenue



#### GENERAL WORK:

- Targeted pole and foundation removals
- New foundation and pole installations
- Signal mast arm removals
- New signal mast arm installations
- Luminaire mast arm removals
- New Luminaire mast arm installations

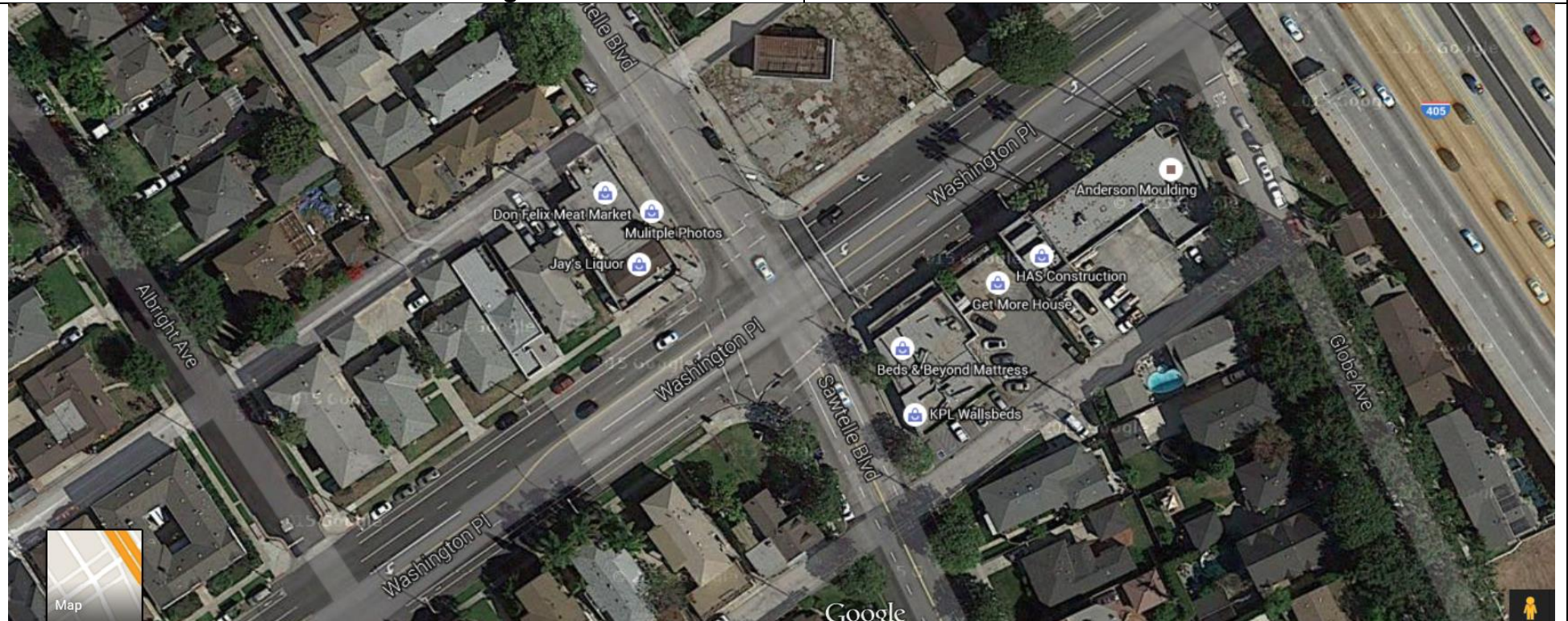
- 3 Section VEH HD removals
- New 4/5 Section VEH HD installations
- Bulldog PPB installations
- 2" Conduit installations
- Controller cabinet upgrade
- Video Image Detection installations
- Opticom EVP removals and installations

## 07-CULVER CITY -1

### Highway Safety Improvement Program (HSIP), Cycle 7

Countermeasure: S6: Provide protected left turn phase (left turn lane already exists)

#### Sawtelle Boulevard/Washington Place



#### GENERAL WORK:

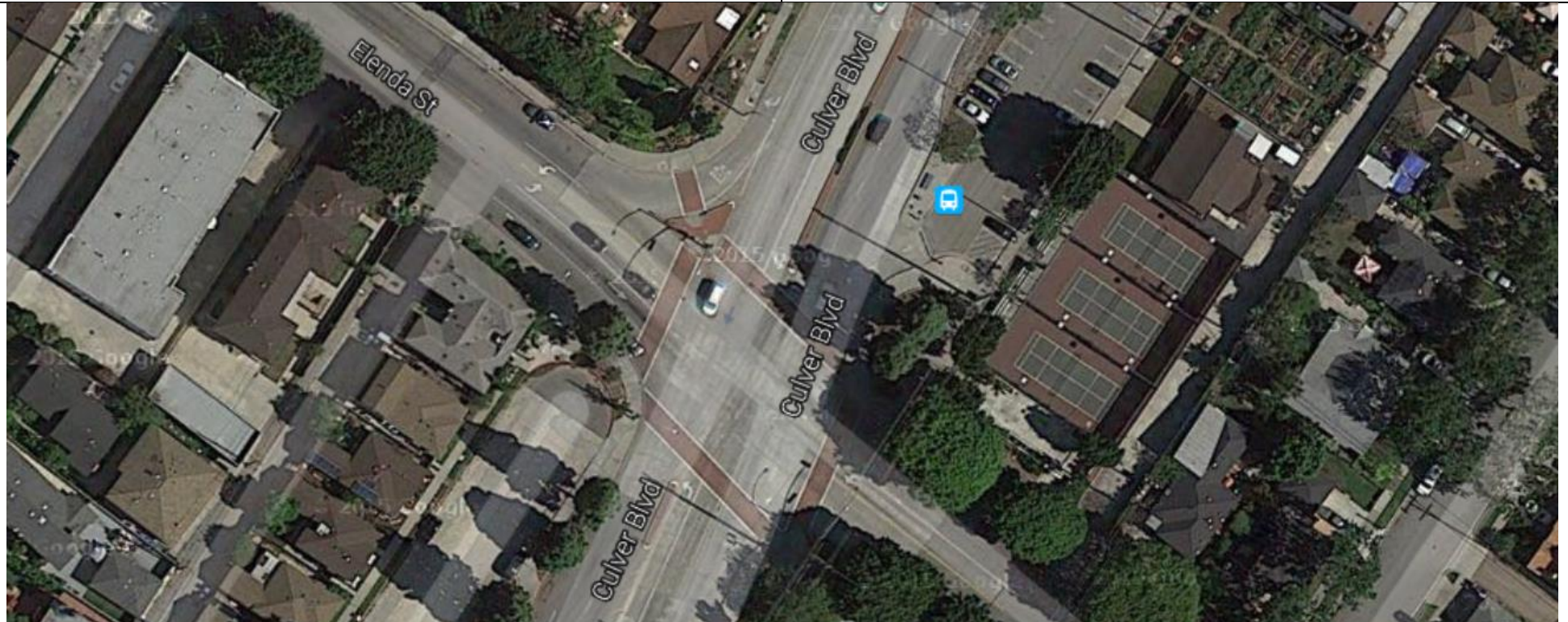
- Targeted pole and foundation removals
- New foundation and pole installations
- Signal mast arm removals
- New signal mast arm installations
- Luminaire mast arm removals
- New Luminaire mast arm installations
- 3 Section VEH HD removals
- New 4/5 Section VEH HD installations
- Bulldog PPB installations
- 2" Conduit installations
- Controller cabinet upgrade
- Video Image Detection installations
- Opticom EVP removals and installations

## 07-CULVER CITY -1

### Highway Safety Improvement Program (HSIP), Cycle 7

Countermeasure: S6: Provide protected left turn phase (left turn lane already exists)

Culver Boulevard/Elenda Street



#### GENERAL WORK:

- Targeted pole and foundation removals
- New foundation and pole installations
- Signal mast arm removals
- New signal mast arm installations
- Luminaire mast arm removals
- New Luminaire mast arm installations

- 3 Section VEH HD removals
- New 4/5 Section VEH HD installations
- Bulldog PPB installations
- 2" Conduit installations
- Controller cabinet upgrade
- Video Image Detection installations
- Opticom EVP removals and installations

## 07-CULVER CITY -1

### Highway Safety Improvement Program (HSIP), Cycle 7

Countermeasure: S6: Provide protected left turn phase (left turn lane already exists)

#### Bristol Parkway/Green Valley Circle



#### GENERAL WORK:

- Targeted pole and foundation removals
- New foundation and pole installations
- Signal mast arm removals
- New signal mast arm installations
- Luminaire mast arm removals
- New Luminaire mast arm installations

- 3 Section VEH HD removals
- New 4/5 Section VEH HD installations
- Bulldog PPB installations
- 2" Conduit installations
- Controller cabinet upgrade
- Video Image Detection installations
- Opticom EVP removals and installations