

The image shows a concrete-lined creek with water flowing through it. In the background, there are modern buildings and trees. The foreground is partially obscured by a green metal railing and some foliage. The text is overlaid on the center of the image.

# Ballona Creek Greenway Plan

Overview and Summary

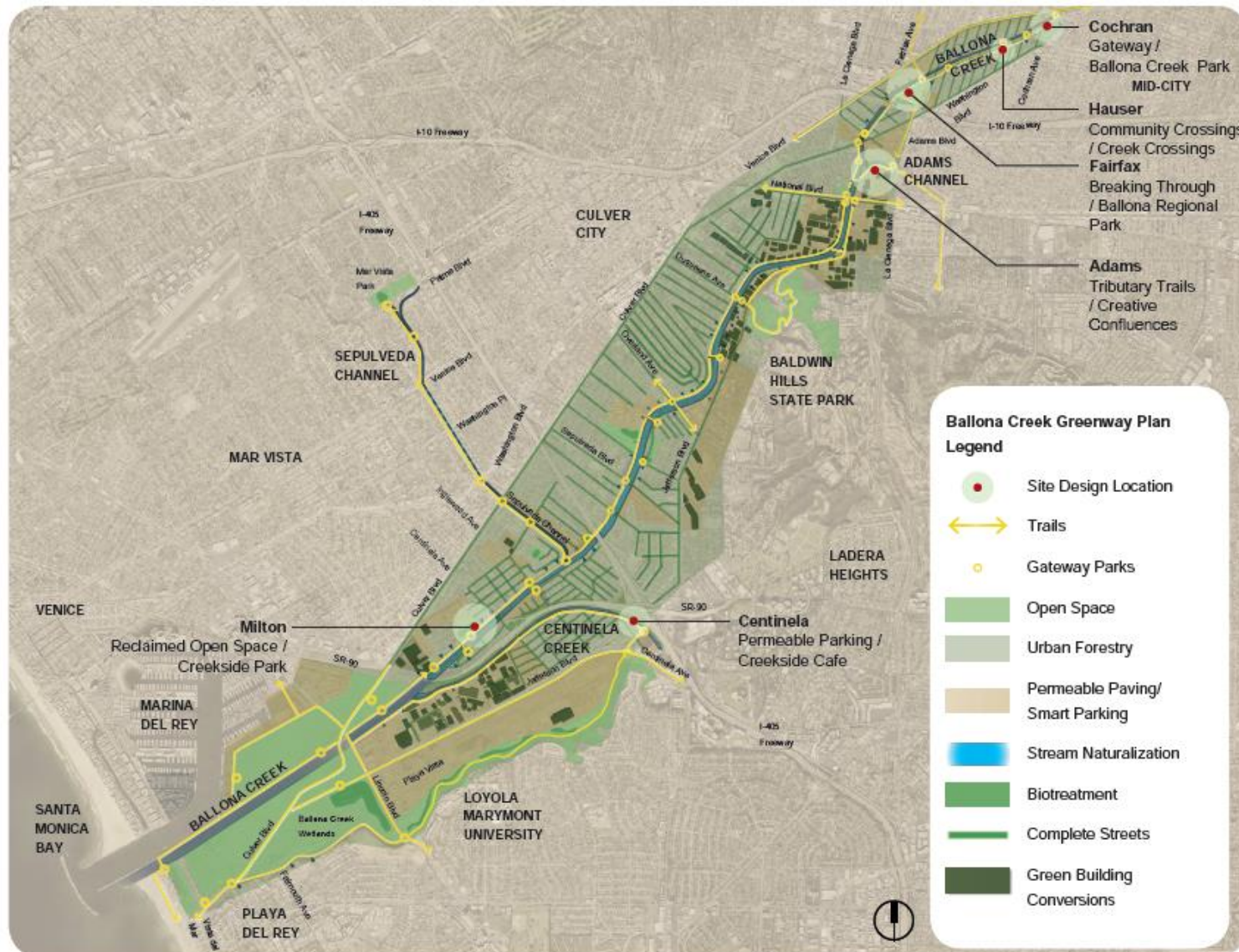
# Introduction

- The Bay Foundation created the Greenway Plan in 2010 and Greenway Projects in 2011 to reflect ideas of stakeholders
- The Greenway Plan describes opportunities to:
  1. Reconnect residents with Ballona Creek
  2. Create access points and trails
  3. Enhance habitat
  4. Mitigate stormwater runoff
  5. Redevelop land for improved watershed health
  6. Increase health and sustainability of region

# Common Best Management Practices (BMPs)

- Pervious Paving
- Biotreatment
- Urban Forestry and Greenway Landscape
- Channel Naturalization
- Complete Streets
- Street Narrowing
- Smart Parking
- Green Building Conversions
- Channel Design
- Hydraulic Modeling

# Map of Ballona Creek Greenway Plan



Map overview of recommended enhancements along Ballona Creek

# Reach 1: Ballona Wetlands

- Note: Wetland restoration currently in Draft of Environmental Impact Report (DEIR) phase
  - Plans to enhance public access and rehabilitate coastal wetland habitat
- Greenway Plan aims to make coastal wetlands a centerpiece for nearby neighborhoods
  - Identifies opportunities for pedestrian/bike access throughout wetlands and to Culver Blvd and Cabora Road
  - Increases multi-modal transportation for commuters
- Proposes creek-adjacent shopping center to engage visitors with creek
  - Includes bioswales and permeable parking to enhance water quality

# Reach 1: Ballona Wetlands



## Legend

### Access

-  Access Gateway
-  Bicycle / Pedestrian Route
-  Bicycle / Pedestrian Bridge

Recommended enhancements to improve bike and pedestrian access

# Reach 1: Ballona Wetlands



## Legend

- 1 Naturalized Centinela Creek
- 2 Centinela Creek Trail
- 3 Biotreatment
- 4 Lawn
- 5 Permeable Plaza
- 6 Cafe
- 7 Parking Structure
- 8 Solar Panels

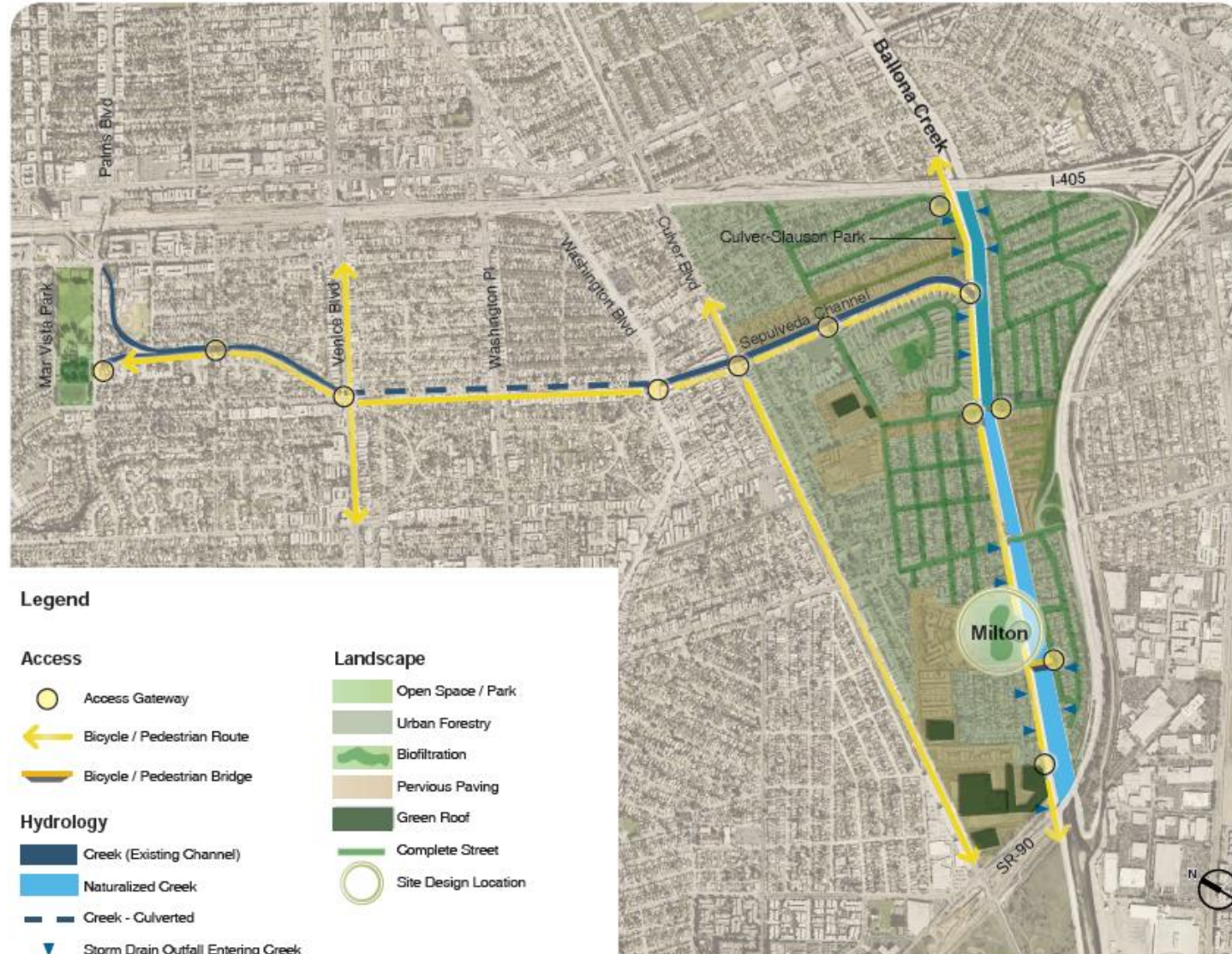
Vision plan of Centinela Creek adjacent shopping center to engage visitors with creek

# Reach 2: Mar Vista

- Sepulveda Channel bike path connects Ballona Creek bike path to Palms, Culver, and Venice Boulevard
  - Improves connectivity and multi-modal transportation for commuters
  - Estimated Cost: \$8.1 to \$14.5 million (2011) or \$9.4 to \$22.0 million (2019)
- Expands right-of-way to close Milton Street to create a park fronting Ballona Creek
  - Increases flood capacity necessary in a naturalized channel
  - Provides gathering space to engage and attract visitors
  - Ballona Creek becomes an outdoor learning space for the school



# Reach 2: Mar Vista



Increased bike connectivity through Sepulveda Channel

# Reach 2: Mar Vista



## Legend

- 1 Athletic Fields
- 2 Underground Cistern
- 3 Permeable Playground
- 4 Jogging Track
- 5 Plaza
- 6 Ballona Creek Bike Path
- 7 Native Landscape
- 8 Widened Right-of-Way
- 9 Pedestrian Bridge
- 10 Naturalized Creek
- 11 Creek Walk
- 12 Complete Street

Milton Street closure for Ballona Creek adjacent park

# Reach 3: Culver City

- Greenway Committee endorses Culver City's Ballona Creek and Trail Focused Special Study (BCTFSS) projects
  - Beyond BCTFSS, Greenway Plans will increase creek access points and park connections to prevent riders from being isolated
  - Also, will balance access with privacy
- High school field to infiltrate runoff from surrounding community
  - Cleans stormwater runoff along with permeable paving and bioswales
- Loop trail around Adams Channel near La Cienega/Jefferson Expo station
  - Increases natural areas and recreational activity in isolated area




# Reach 3: Culver City






Recommended bike path extensions and park connections in Culver City

## Legend

### Access

-  Access Gateway
-  Bicycle / Pedestrian Route
-  Bicycle / Pedestrian Bridge

### Hydrology

-  Creek (Existing Channel)
-  Naturalized Creek
-  Creek - Culverted
-  Storm Drain Outfall Entering Creek

### Landscape

-  Open Space / Park
-  Urban Forestry
-  Biofiltration
-  Pervious Paving
-  Green Roof
-  Complete Street

# Reach 3: Culver City



## Legend

- 1 Ballona Creek Bike Path
- 2 Biotreatment
- 3 Pedestrian Bridge
- 4 Loop Trail
- 5 Solar Panels
- 6 Enhanced Crossing
- 7 Trail to Ballona Creek at Fairfax Ave
- 8 Park
- 9 Trail to Baldwin Hills

Early Action Plan of Adams Channel loop trail and wildlife corridor

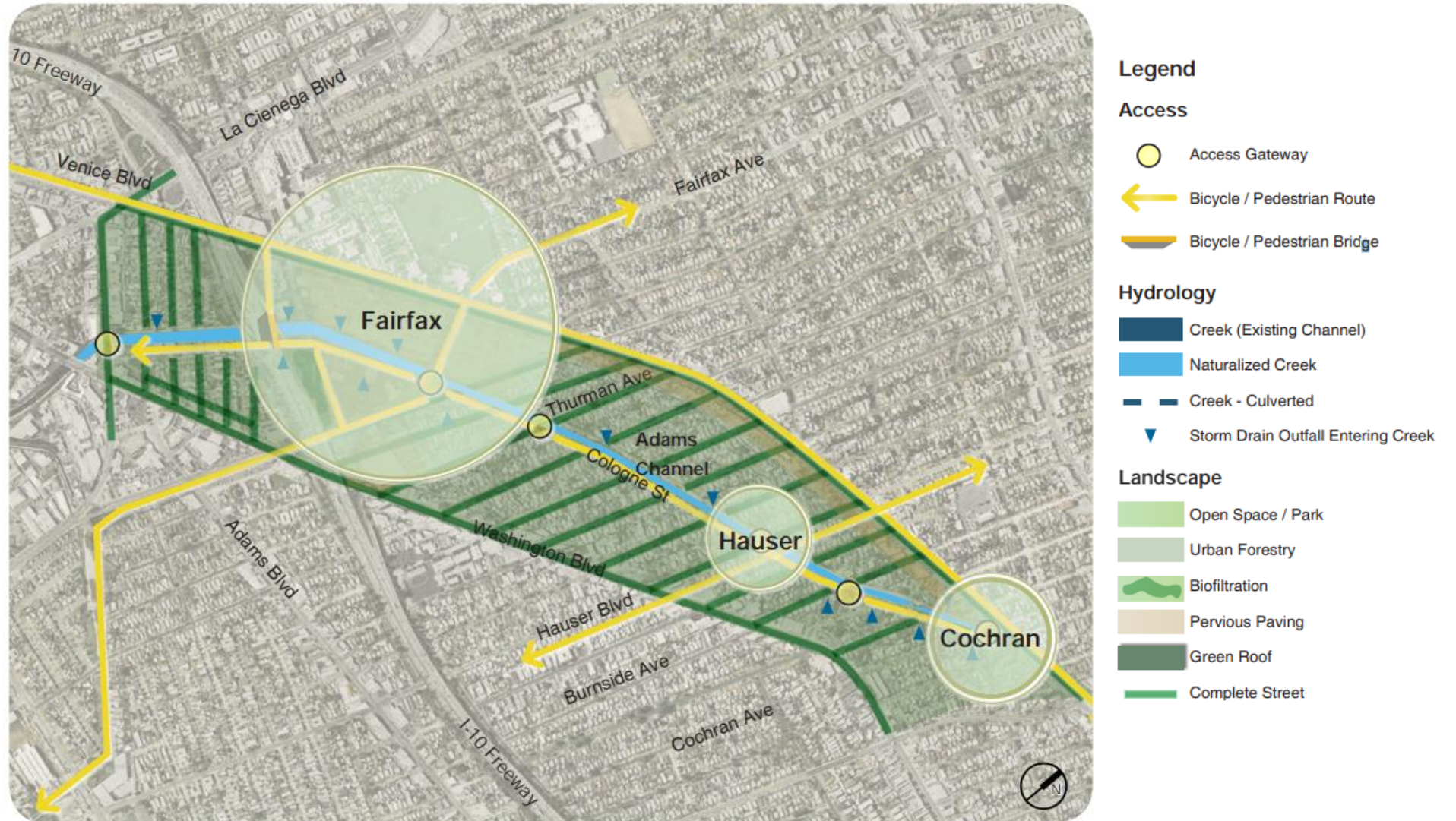
# Ballona Creek Greenway Projects: Adams Channel

- Next phase of planning and design following the Greenway Plan to create a recreational nature walk
- One-quarter of a mile to Expo station makes nature walk accessible and attracts visitors
- Revitalizes and naturalizes channel bottom to:
  1. Re-create riparian habitat
  2. Enhance nature viewing and recreation
  3. Attract visitors
  4. Potentially connect Ballona Creek Bike Path
  5. Meet flood control standards
  6. Enhance water quality
- Estimate of construction cost: \$4.9 to \$6.3 million (2011) or \$5.7 to \$7.3 million (2019)

# Reach 4: Mid-City

- Creating access at street ends and improving trail street crossings
  - Strengthens continuity, slows and alerts traffic, calls attention to creek and park
  - Options to lay a bike path along creek under 10 Freeway
- Vision: Combining two maintenance yards to create Ballona Regional Park
  - Stores floodwaters, improves habitat, and allows recreation
- Gateway and Neighborhood Park at Eastern Terminus
  - Announces Ballona Creek's presence to travelers on Venice Boulevard
  - Biofiltration fountain cleans flows
  - Estimate of construction cost: \$0.9 to \$1.7 million (2011) or \$1.0 to \$2.0 million (2019)

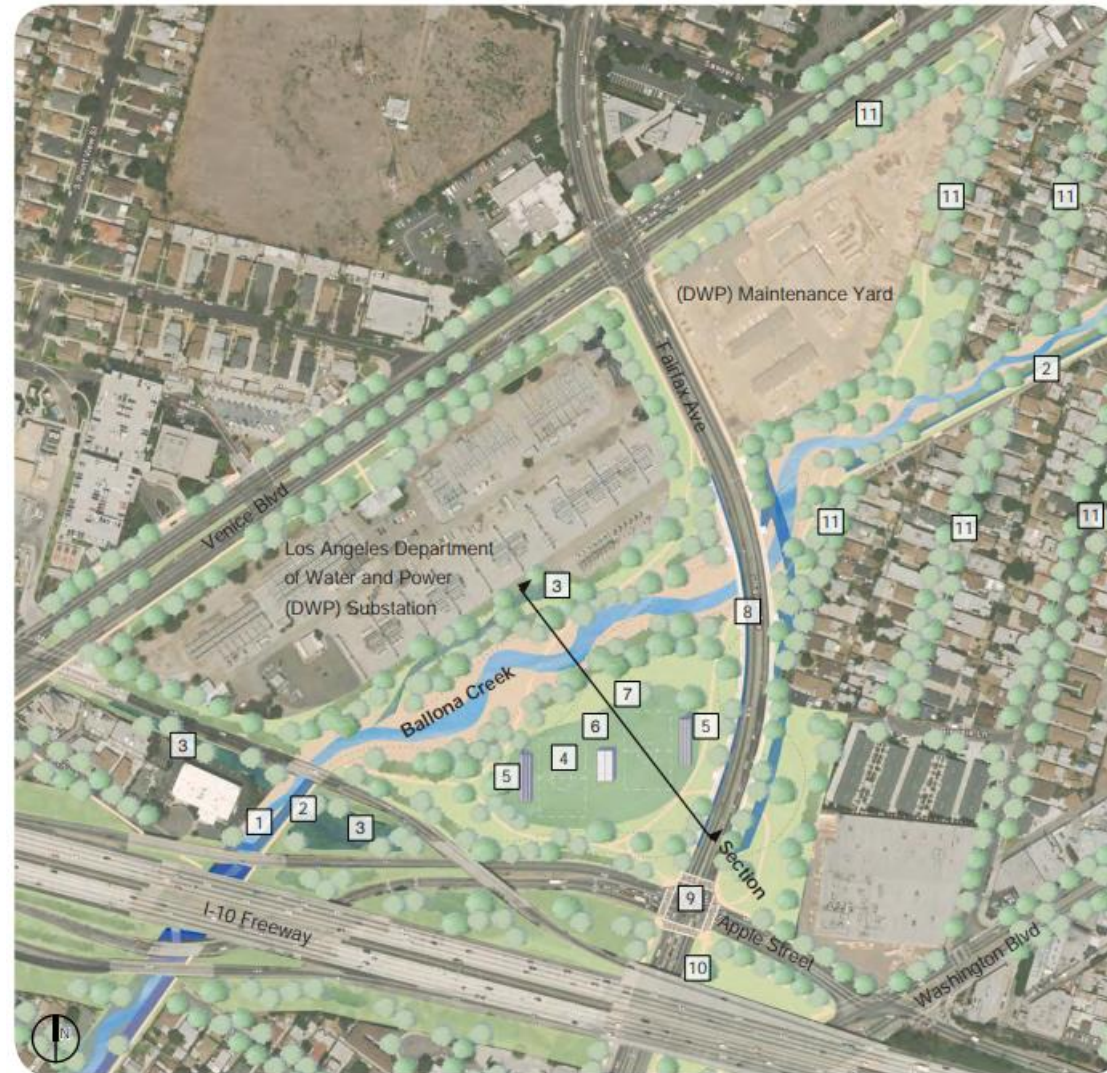
# Reach 4: Mid-City



Increased bike connectivity, access points, and Complete Streets in Mid-City



# Reach 4: Mid-City



## Legend

- 1 Naturalized Ballona Creek
- 2 Ballona Creek Bike Path
- 3 Biotreatment
- 4 Multi-Use Fields
- 5 Seating
- 6 Stage and Storage
- 7 Flood Detention
- 8 Bridge
- 9 Enhanced Crossing
- 10 Trail to Adams Channel and Baldwin Hills
- 11 Complete Street

Vision Plan of Ballona Regional Park and bike path under I-10 Freeway

# Reach 4: Mid-City



## Legend

- 1 Ballona Creek Bike Path
- 2 Native Landscaping
- 3 Seating
- 4 Enhanced Pedestrian Zone
- 5 Enhanced Crossing
- 6 Pocket Park
- 7 Biotreatment Fountain
- 8 Complete Street
- 9 Bicycle Lane

Early Action Plan for Gateway Park, noticeable from Venice Blvd