



*Culver* CITY

**Public Hearing – Adoption of a Resolution  
Confirming the Levy and Collection of Solid  
Waste Fees for FY 2026-27 – FY 2030-31**

May 26, 2026

Sean Singletary - Department of Public Works/EPO

# Background

- EPO serves 8,000 residential and 1,500 business accounts, as well as 150 temporary accounts at a time
- Exclusive franchise arrangement that only allows outside haulers on limited, permitted basis
- Funded entirely by User Charges through the City's Enterprise Refuse Fund
- Operates 16 collection routes
- City-owned Transfer Station with service seven days a week with a capacity of 500 tons/day



# Rate Study

- EPO conducts a rate study every five years
- The last increase was approved by City Council in August 2021
- EPO contracted with SCS Engineers to complete the current Engineer's Report and proposed rates
- Prop 218 requires 45-day notice of fee increases
- Mailers went to 10,000 customers on April 10, 2026
- April 13, 2026 City Council approved the Engineer's Report and set the date of public hearing



## NOTICE OF PUBLIC HEARING

*City of Culver City Environmental Programs and Operations (EPO) Division*

### PROPOSED REFUSE RATE ADJUSTMENTS FOR CULVER CITY CUSTOMERS



**HEARING DATE:**  
May 26, 2026 at 7pm

**LOCATION:**  
Mike Balkman Council Chambers  
Culver City Hall, 9770 Culver Blvd.  
Culver City, CA 90232

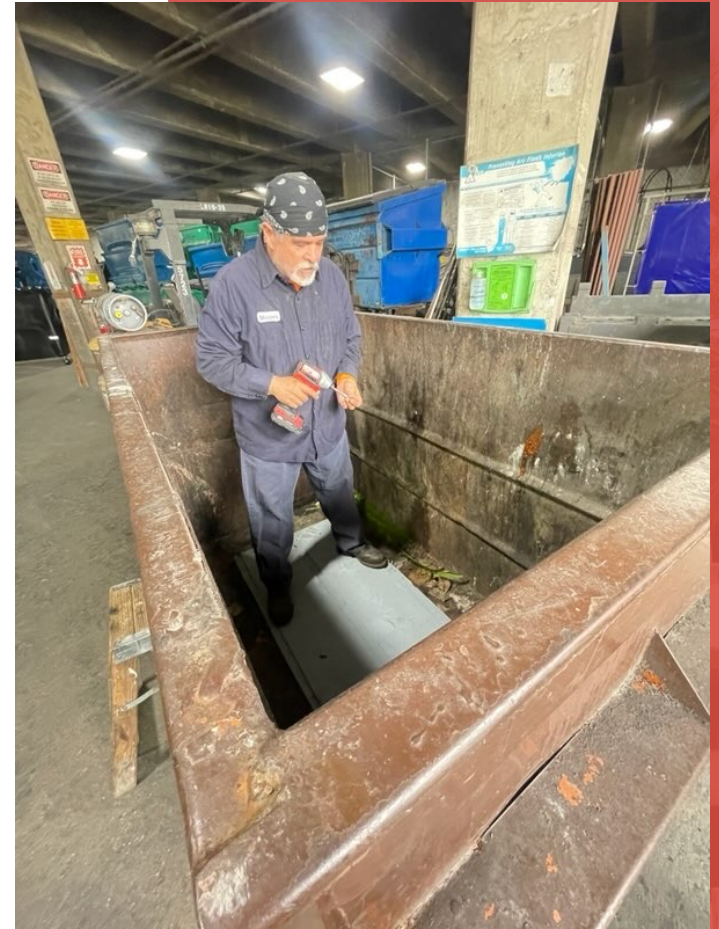
# Market Conditions

- Transition of Recycling Market from a revenue to an expense
- SB 1383
- Closure of local facilities leaving fewer options that are further away
- Air Quality requirements for alternative fuel trucking
- Increased costs for equipment, fuel and staffing
- Transfer Station Aging



# Cost Saving Measures

- Use excess capacity at Transfer Station to accept waste from Santa Monica and Los Angeles
- Roll out new billing and routing system
- Periodic auditing of accounts
- Optimizing truck routes to reduce the use of overtime
- Use sustainable practices to extend the life of bins and carts



# Proposed Rate Changes

- SCS conducted a rate study in 2025 to determine revenue sufficiency
- 25% (3 months) reserve



## 5-Year Revenue Adjustment Plan

	FY 2027	FY 2028	FY 2029	FY 2030	FY 2031
Revenue Adjustment %	9.00%	8.00%	5.00%	5.00%	5.00%



The background of the slide is a photograph of a large, white, classical-style building with multiple arched windows and doorways. Several tall palm trees are in the foreground, partially obscuring the building. The sky is clear and blue. A semi-transparent white rectangular box is centered over the image, containing the text "Questions?".

**Questions?**

